

FOR LEASE

 Baltimore County, MD

WEST ROAD CORPORATE CENTER

110 WEST ROAD | TOWSON, MARYLAND 21204

AVAILABLE

Suite 102: 2,605 sf - 8,287 sf

Suite 107: 2,605 sf

Suite 202: 1,589 sf

Suite 210: 2,470 sf*

Suite 212: 3,639 sf*

Suite 235: 2,265 sf

Suite 425: 1,726 sf

Storage: 134 sf and 432 sf

*Can be combined up to 6,109 sf

ZONING

BL (Business Local)

RENTAL RATE

\$22.50 - \$24.75/sf, FS

PARKING

4.4/1,000 sf

HIGHLIGHTS

- ▶ On-site reserved parking
- ▶ Conference room and vending area
- ▶ Easy access to I-83 and I-695; located in a HUB Zone
- ▶ Within walking distance to the new *Shops at Kenilworth*, which includes Trader Joe's
- ▶ Immediate access to public transportation



Matt Mueller

☎ 410.494.6658

✉ mmueller@mackenziecommercial.com

Henson Ford

☎ 410.494.6657

✉ hford@mackenziecommercial.com

Bill Whitty

☎ 410.494.4862

✉ bwhitty@mackenziecommercial.com

Joe Bradley

☎ 410.494.4892

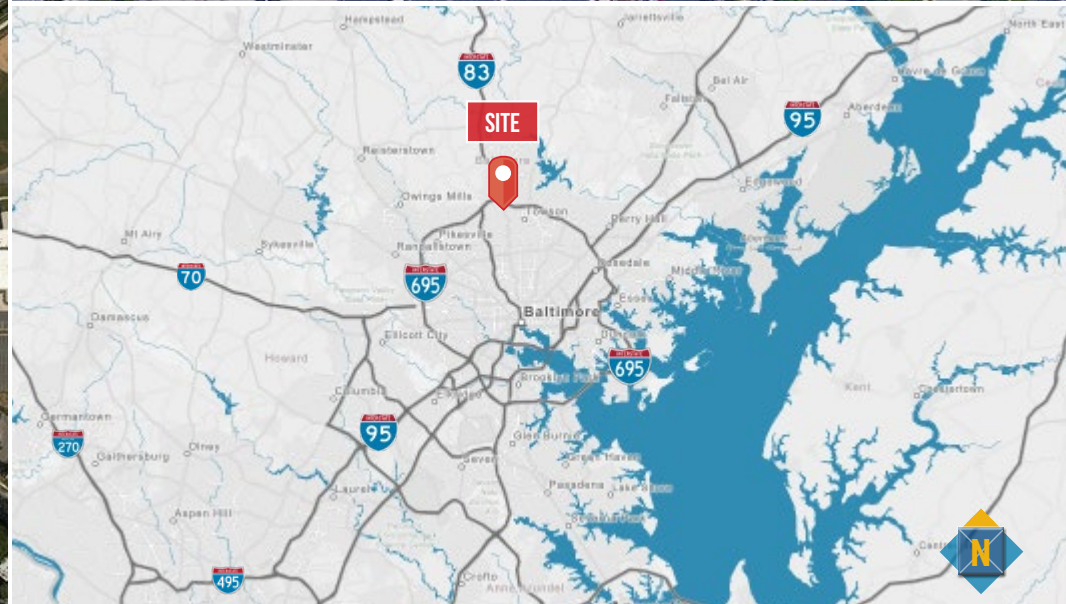
✉ jbradley@mackenziecommercial.com

FOR LEASE

Baltimore County, MD

LOCATION

WEST ROAD CORPORATE CENTER | 110 WEST ROAD | TOWSON, MARYLAND 21204



Matt Mueller

410.494.6658

mmueller@mackenziecommercial.com

Mackenzie Commercial Real Estate Services, LLC

Henson Ford

410.494.6657

hford@mackenziecommercial.com

410-821-8585 • 2328 W. Joppa Road, Suite 200 | Lutherville-Timonium, Maryland 21093

Bill Whitty

410.494.4862

bwhitty@mackenziecommercial.com

Joe Bradley

410.494.4892

jbradley@mackenziecommercial.com

www.MACKENZIECOMMERCIAL.com

FOR LEASE

Baltimore County, MD

SUITE 102

WEST ROAD CORPORATE CENTER | 110 WEST ROAD | TOWSON, MARYLAND 21204



Matt Mueller

☎ 410.494.6658

✉ mmueller@mackenziecommercial.com

Mackenzie Commercial Real Estate Services, LLC

Henson Ford

☎ 410.494.6657

✉ hford@mackenziecommercial.com

• 410-821-8585

Bill Whitty

☎ 410.494.4862

✉ bwhitty@mackenziecommercial.com

• 2328 W. Joppa Road, Suite 200 | Lutherville-Timonium, Maryland 21093

Joe Bradley

☎ 410.494.4892

✉ jbradley@mackenziecommercial.com

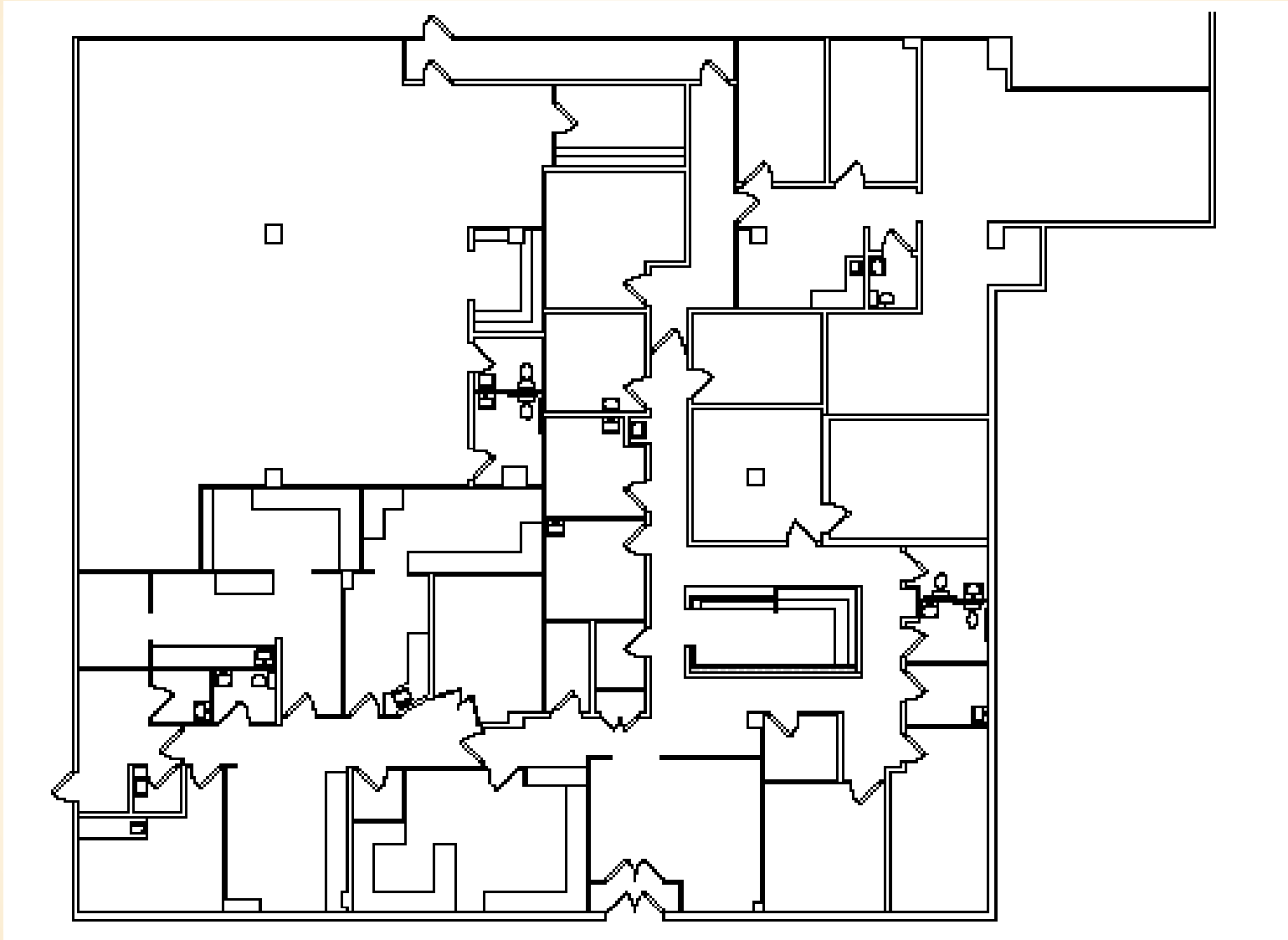
• www.MACKENZIECOMMERCIAL.com

FOR LEASE

Baltimore County, MD

SUITE 102: 2,605 SF - 8,287 SF

WEST ROAD CORPORATE CENTER | 110 WEST ROAD | TOWSON, MARYLAND 21204

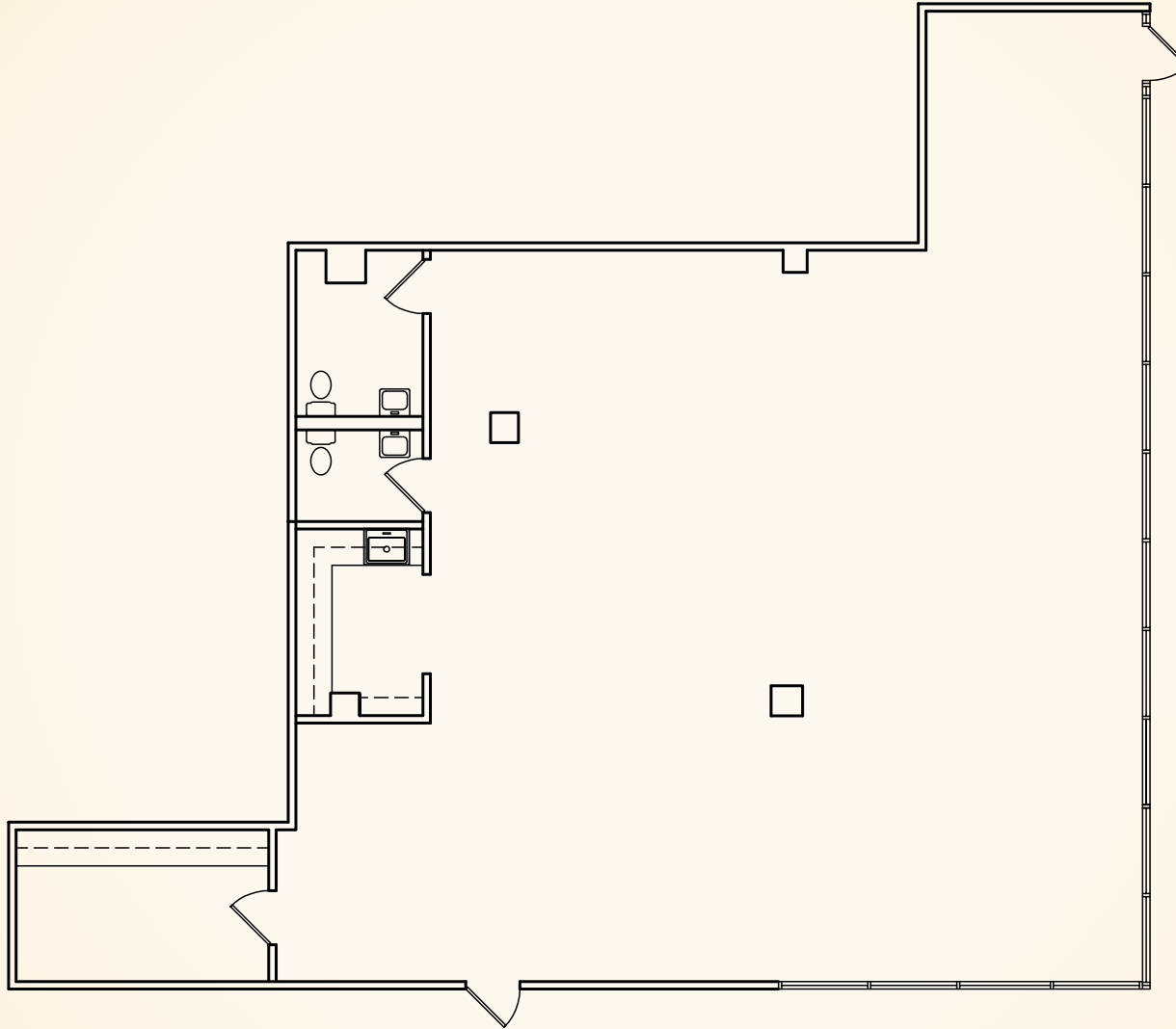


FOR LEASE

Baltimore County, MD

SUITE 107: 2,605 SF

WEST ROAD CORPORATE CENTER | 110 WEST ROAD | TOWSON, MARYLAND 21204



Matt Mueller

☎ 410.494.6658

✉ mmueller@mackenziecommercial.com

Henson Ford

☎ 410.494.6657

✉ hford@mackenziecommercial.com

Bill Whitty

☎ 410.494.4862

✉ bwhitty@mackenziecommercial.com

Joe Bradley

☎ 410.494.4892

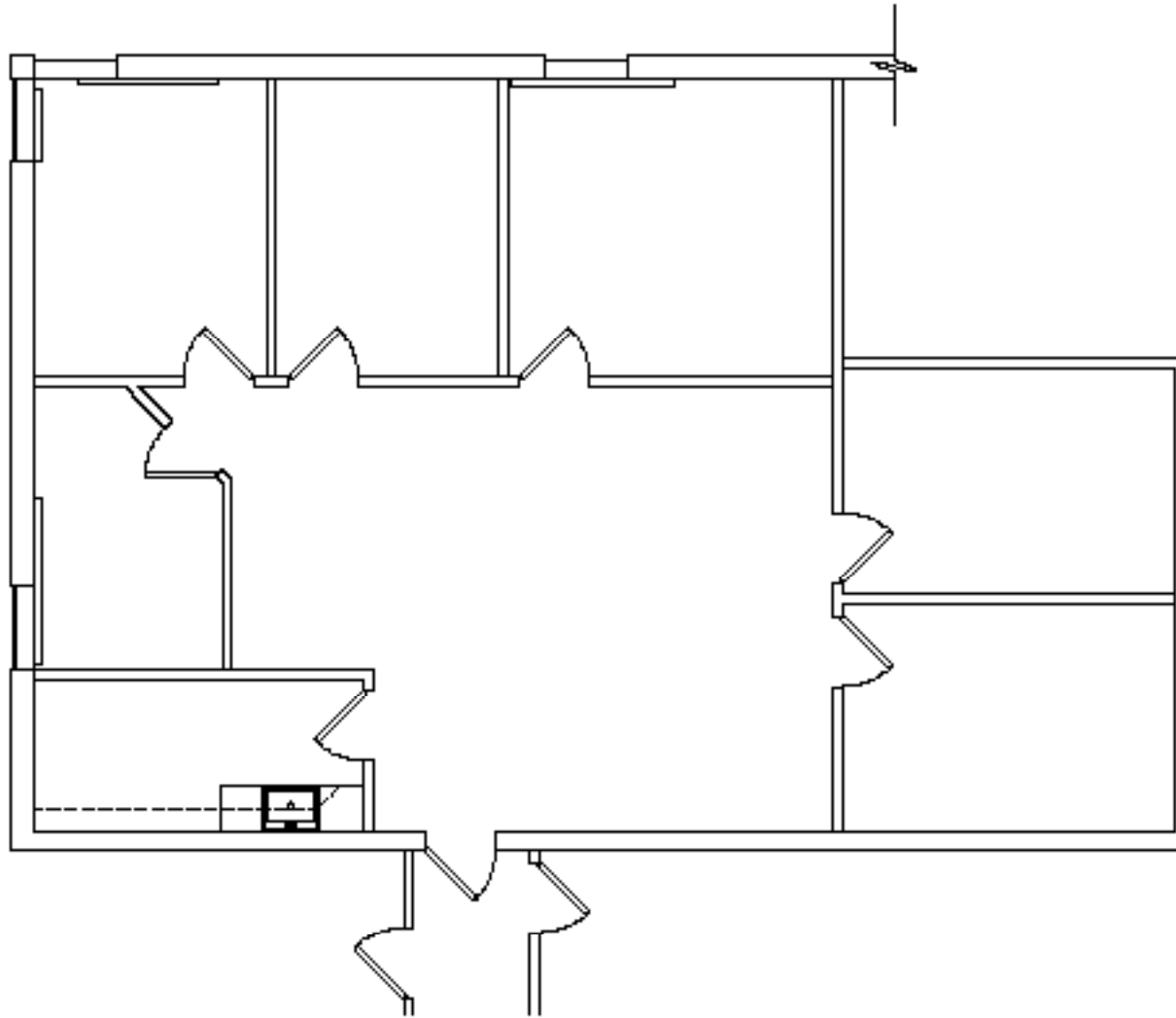
✉ jbradley@mackenziecommercial.com

FOR LEASE

Baltimore County, MD

SUITE 202: 1,589 SF

WEST ROAD CORPORATE CENTER | 110 WEST ROAD | TOWSON, MARYLAND 21204



Matt Mueller

☎ 410.494.6658

✉ mmueller@mackenziecommercial.com

Henson Ford

☎ 410.494.6657

✉ hford@mackenziecommercial.com

Bill Whitty

☎ 410.494.4862

✉ bwhitty@mackenziecommercial.com

Joe Bradley

☎ 410.494.4892

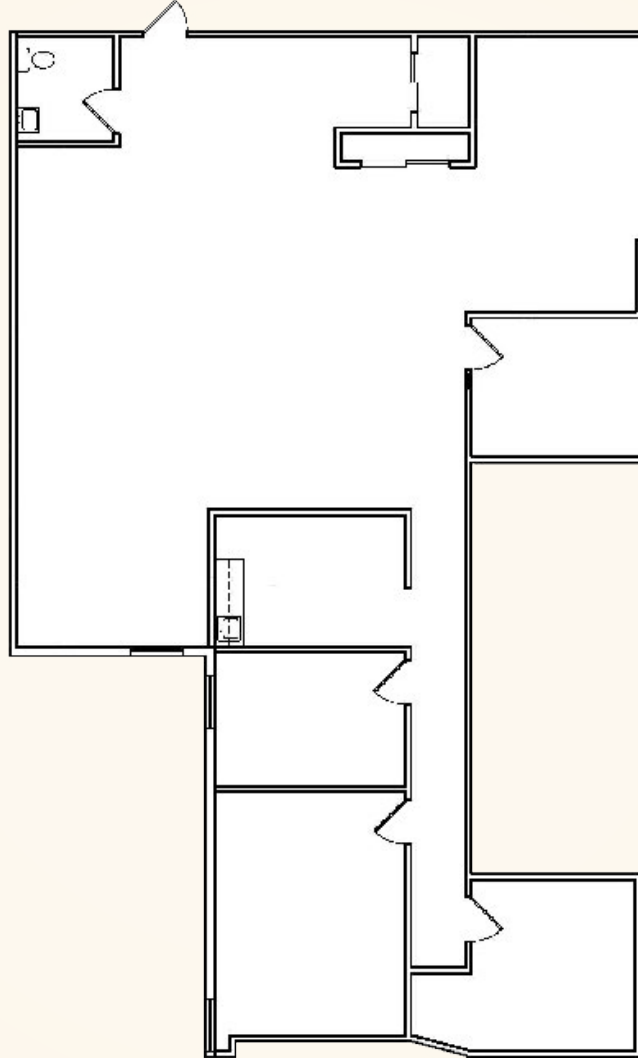
✉ jbradley@mackenziecommercial.com

FOR LEASE

Baltimore County, MD

SUITE 210: 2,470 SF

WEST ROAD CORPORATE CENTER | 110 WEST ROAD | TOWSON, MARYLAND 21204



Matt Mueller

☎ 410.494.6658

✉ mmueller@mackenziecommercial.com

Henson Ford

☎ 410.494.6657

✉ hford@mackenziecommercial.com

Bill Whitty

☎ 410.494.4862

✉ bwhitty@mackenziecommercial.com

Joe Bradley

☎ 410.494.4892

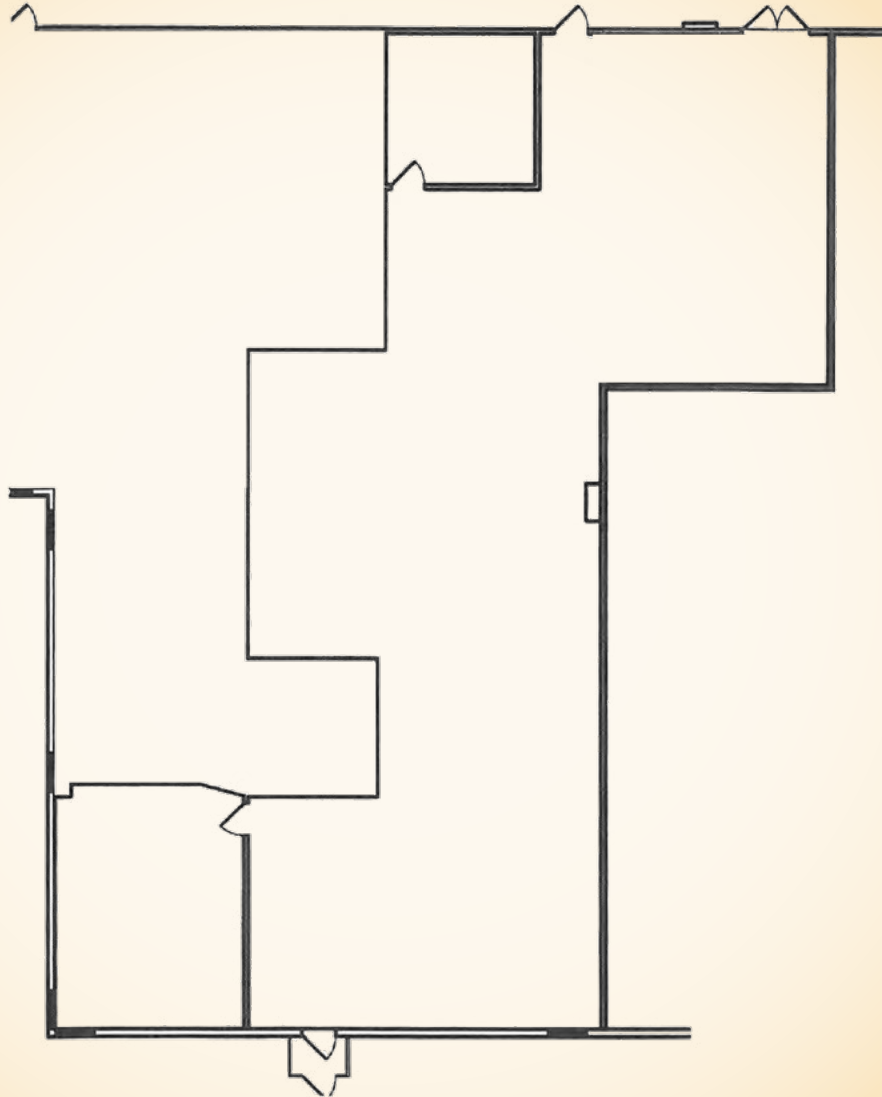
✉ jbradley@mackenziecommercial.com

FOR LEASE

Baltimore County, MD

SUITE 212: 3,639 SF

WEST ROAD CORPORATE CENTER | 110 WEST ROAD | TOWSON, MARYLAND 21204



Matt Mueller

☎ 410.494.6658

✉ mmueller@mackenziecommercial.com

Henson Ford

☎ 410.494.6657

✉ hford@mackenziecommercial.com

Bill Whitty

☎ 410.494.4862

✉ bwhitty@mackenziecommercial.com

Joe Bradley

☎ 410.494.4892

✉ jbradley@mackenziecommercial.com

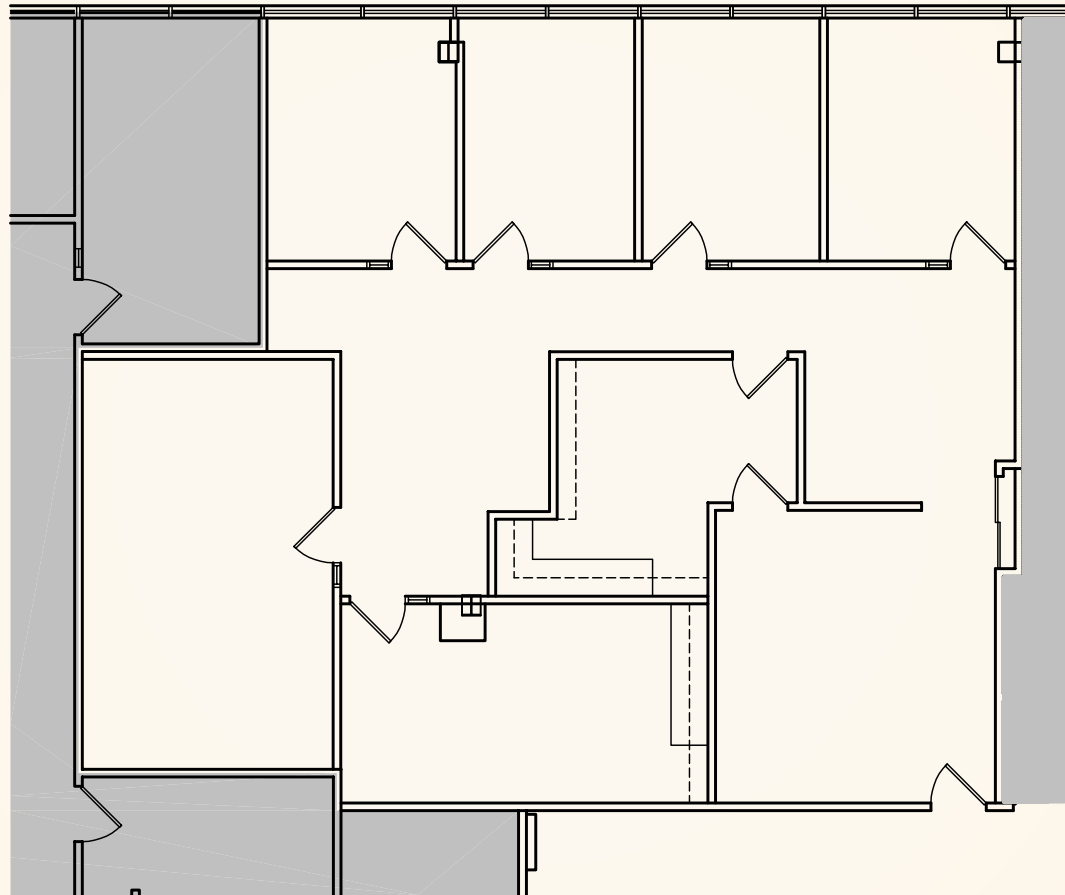
MacKenzie Commercial Real Estate Services, LLC • 410-821-8585 • 2328 W. Joppa Road, Suite 200 | Lutherville-Timonium, Maryland 21093 • www.MACKENZIECOMMERCIAL.com

FOR LEASE

Baltimore County, MD

SUITE 235: 2,265 SF

WEST ROAD CORPORATE CENTER | 110 WEST ROAD | TOWSON, MARYLAND 21204



FOR LEASE

Baltimore County, MD

SUITE 425: 1,726 SF

WEST ROAD CORPORATE CENTER | 110 WEST ROAD | TOWSON, MARYLAND 21204

