

FOR LEASE

Baltimore City, Maryland

HARBOR COURT

575 S. CHARLES STREET | BALTIMORE, MARYLAND 21201

THE
RMR
GROUP

PARKING

Free Parking - 1:1,000

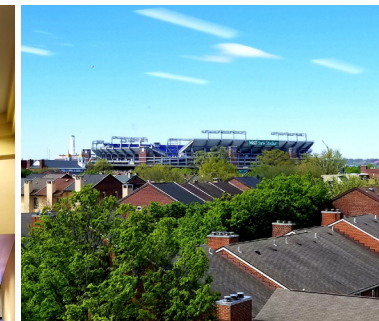
HIGHLIGHTS

- ▶ Recently renovated lobby and common areas.
- ▶ Inner Harbor location with easy access to I-95 and I-295.
- ▶ Part of a high-end, mixed-use project including the luxury Royal Sonesta Hotel and condominium tower.
- ▶ On-site garage parking.
- ▶ On the Charm City Circulator Purple Route with bike racks available.
- ▶ Office views include Inner Harbor and Ravens Stadium skyline.
- ▶ Access to on-site exercise facility, conference and hotel rooms and coffee shop at the Royal Sonesta.



ELEVATOR LOBBIES, BATHROOMS, AND COMMON AREAS RECENTLY UPDATED!

**NEW BROKER INCENTIVE!
\$50 GIFT CARD &
ADDITIONAL 1% LEASING
COMMISSION INCENTIVE
PER TOUR**



MACKENZIE
COMMERCIAL REAL ESTATE SERVICES, LLC

Terri Harrington | Senior Vice President

☎ 443.573.3213 ✉ tharrington@mackenziecommercial.com

MacKenzie Commercial Real Estate Services, LLC • 443-573-3200 • 111 S. Calvert Street, Suite 2800 | Baltimore, Maryland 21202 • www.MACKENZIECOMMERCIAL.com

FOR LEASE

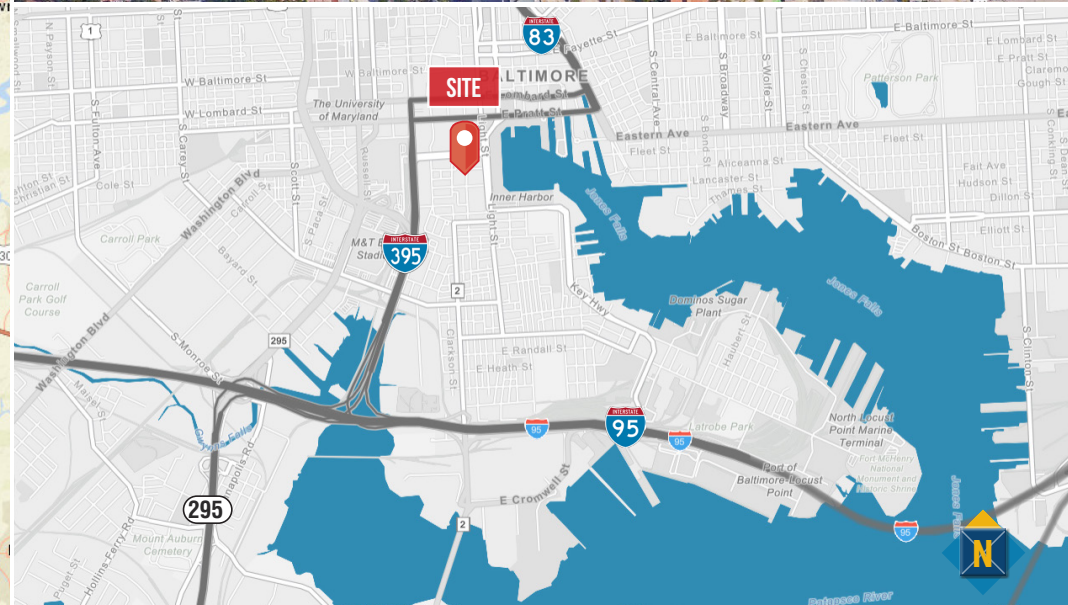
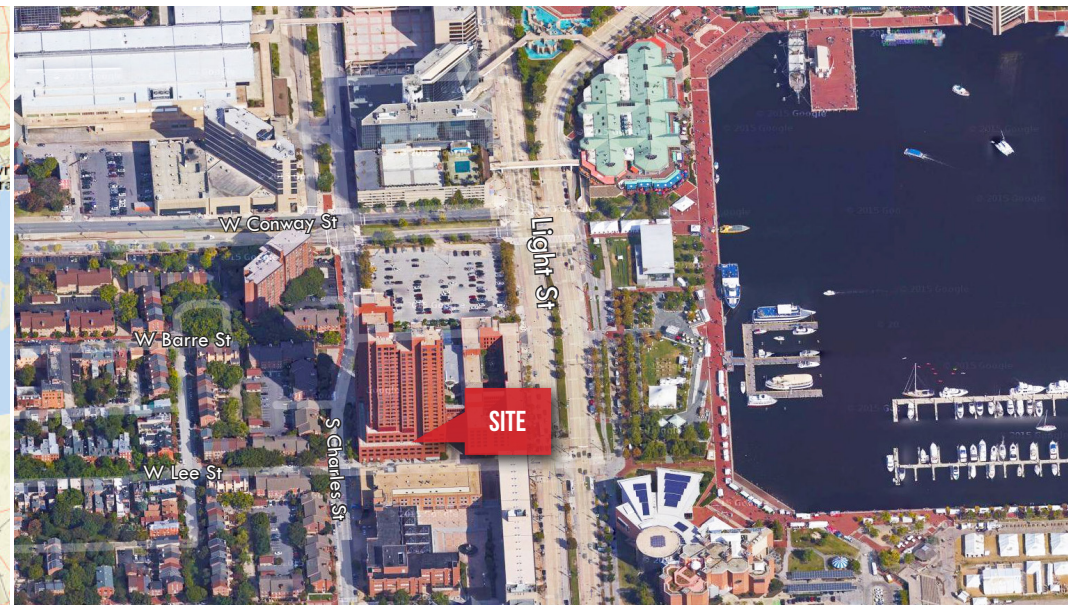
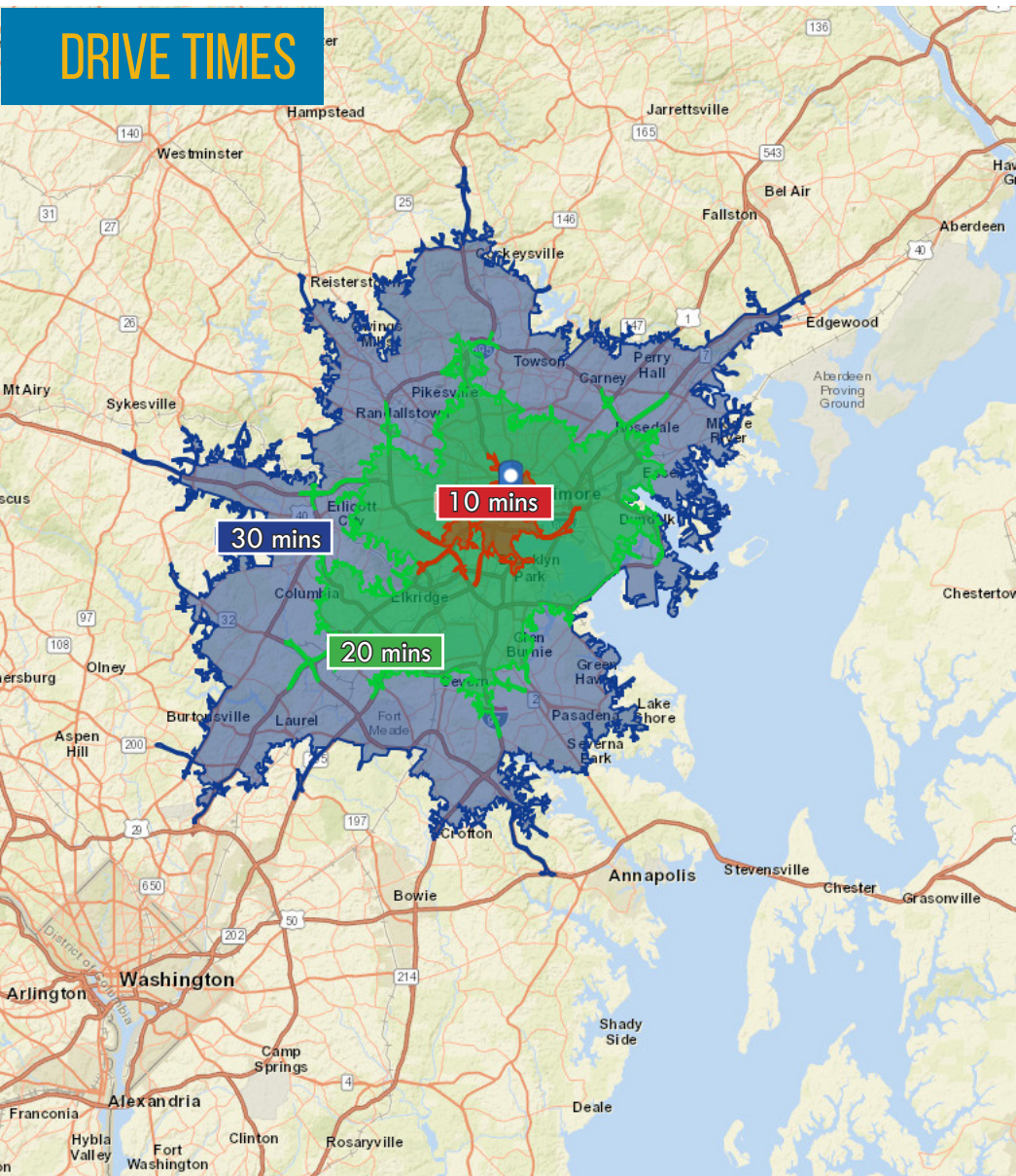
Baltimore City, Maryland

LOCATION

HARBOR COURT | 575 S CHARLES STREET | BALTIMORE, MARYLAND 21201

THE
RMR
GROUP

DRIVE TIMES



FOR LEASE

Baltimore City, Maryland

FLOOR PLANS

HARBOR COURT | 575 S CHARLES STREET | BALTIMORE, MARYLAND 21201

THE
RMR
GROUP

SUITE SIZE

130 1,016 sf

150 1,390 sf

203 1,685 sf*

208 2,042 sf*

305 3,398 sf

310** 2,291 sf**

315 3,876 sf

400 2,240 sf

402B 746 sf

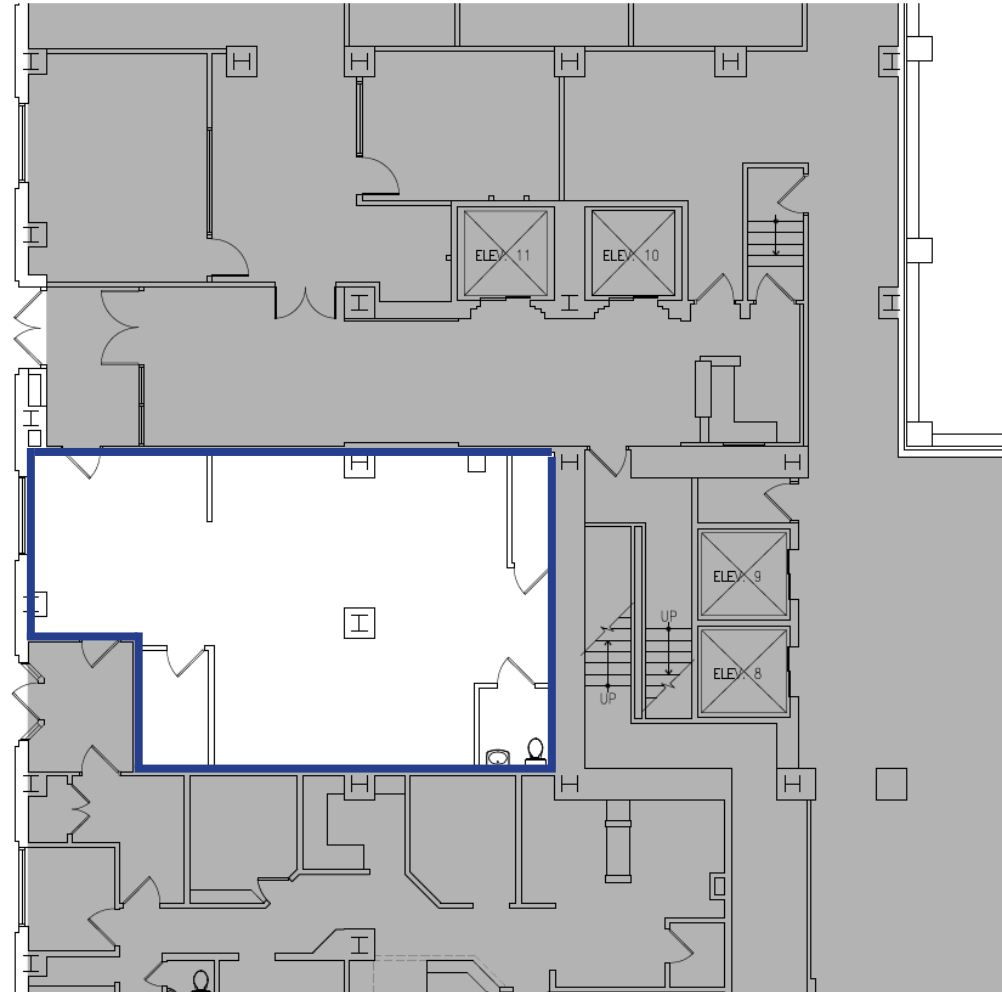
408 1,830 sf

501 3,474 sf

*2nd floor suites can be combined to total 3,727 sf

** Suite 310 - Available 12/1/2020

SUITE 130 1,016 SF



FOR LEASE

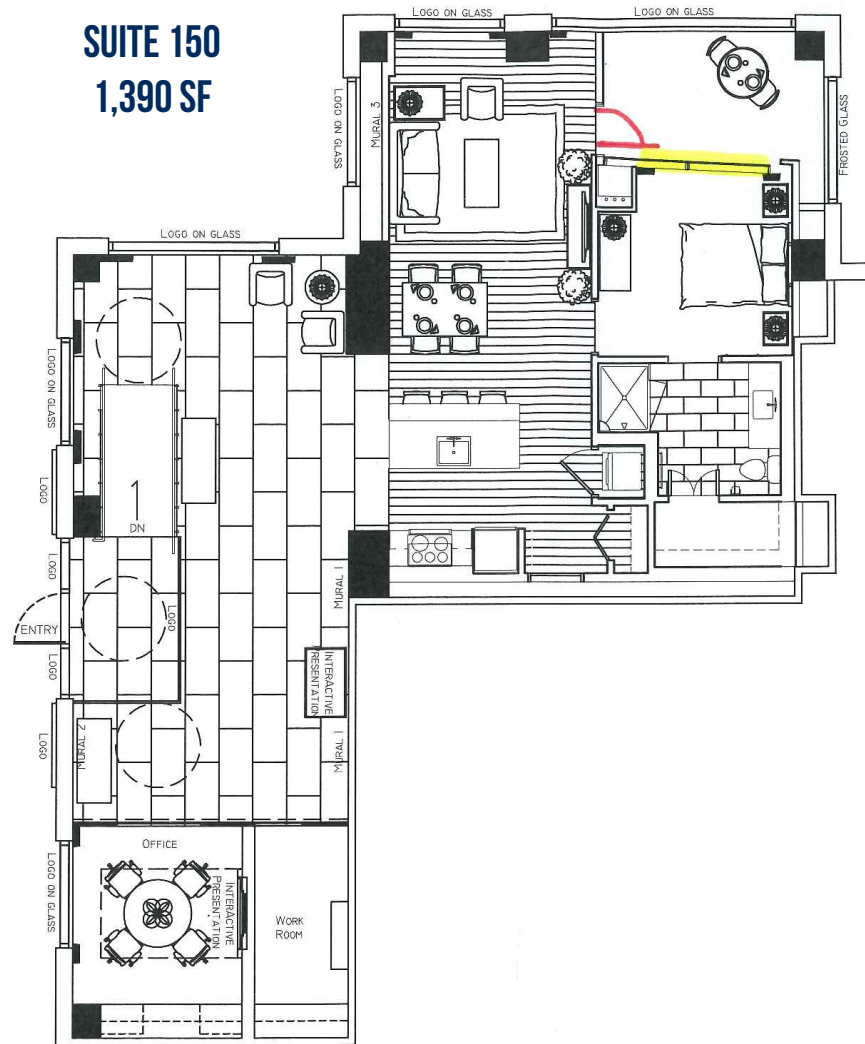
Baltimore City, Maryland

FLOOR PLANS

HARBOR COURT | 575 S CHARLES STREET | BALTIMORE, MARYLAND 21201

THE
RMR
GROUP

SUITE 150
1,390 SF



FOR LEASE

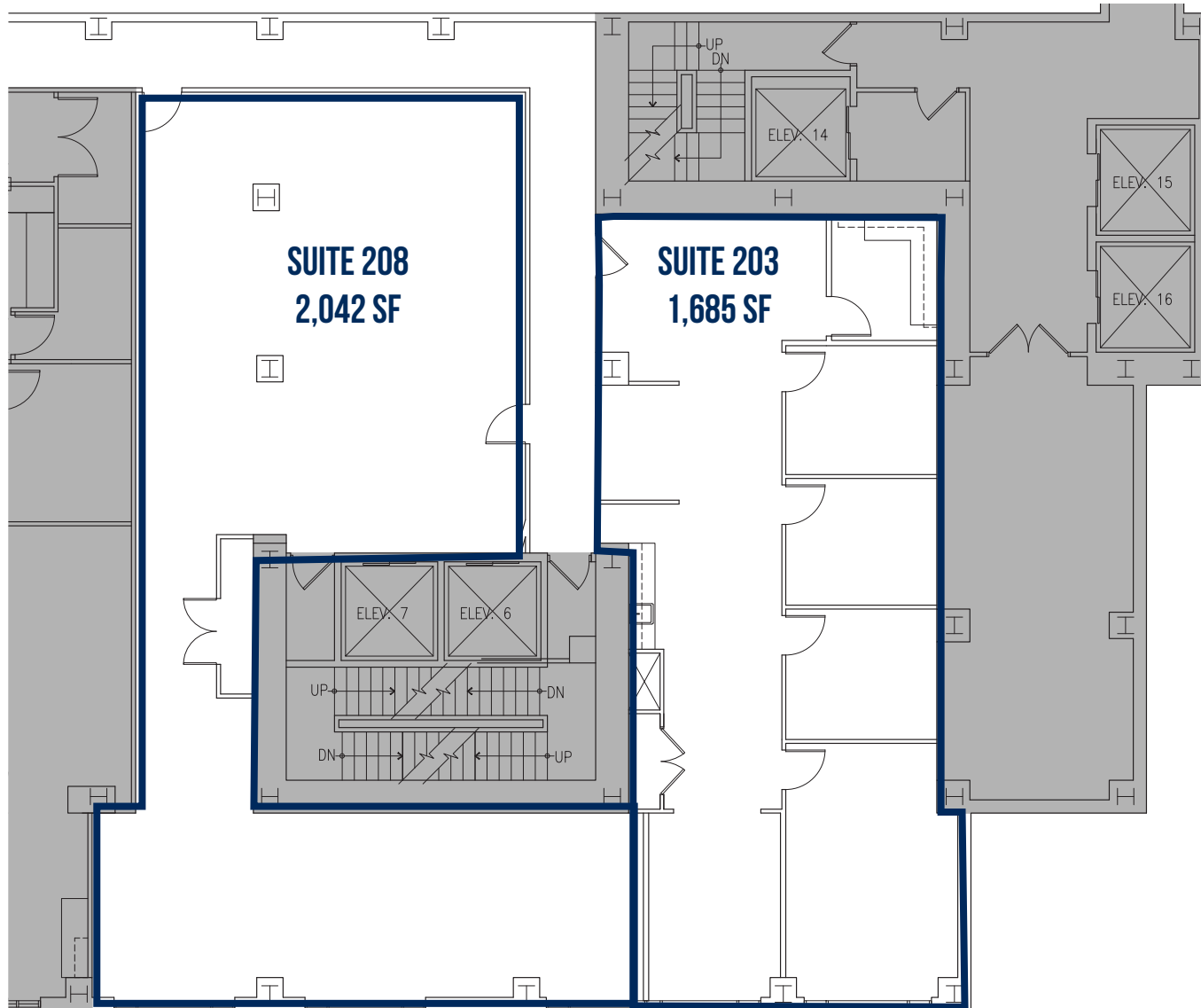
Baltimore City, Maryland

FLOOR PLANS

HARBOR COURT | 575 S CHARLES STREET | BALTIMORE, MARYLAND 21201

THE
RMR
GROUP

SUITES CAN BE COMBINED TO
A TOTAL OF
3,727 SF



FOR LEASE

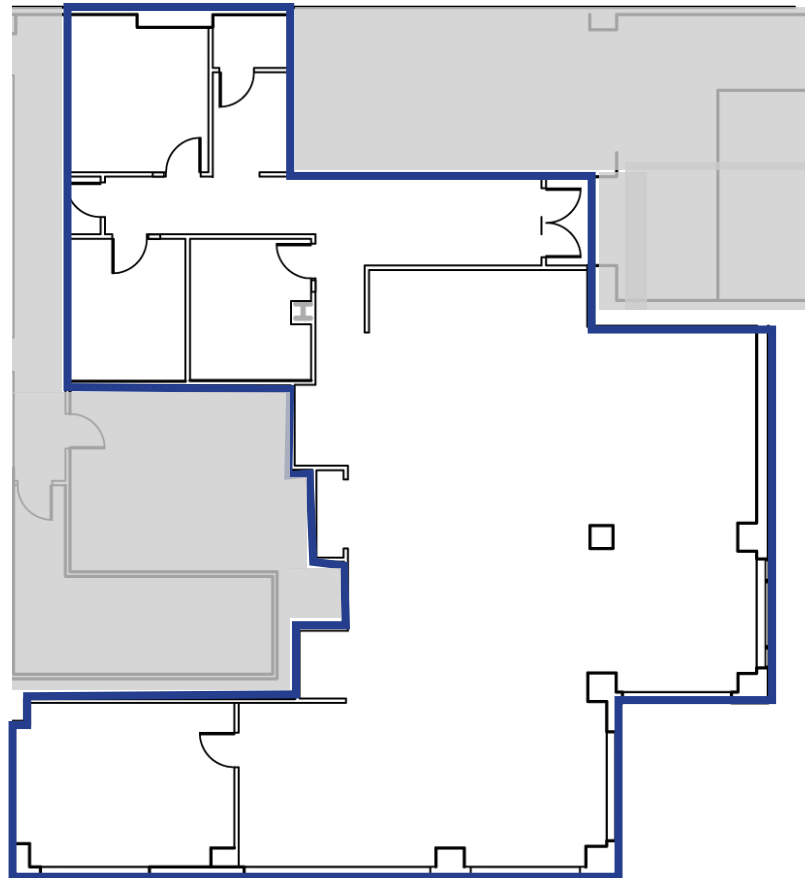
Baltimore City, Maryland

FLOOR PLANS

HARBOR COURT | 575 S CHARLES STREET | BALTIMORE, MARYLAND 21201

THE
RMR
GROUP

SUITE 305
3,398 SF



FOR LEASE

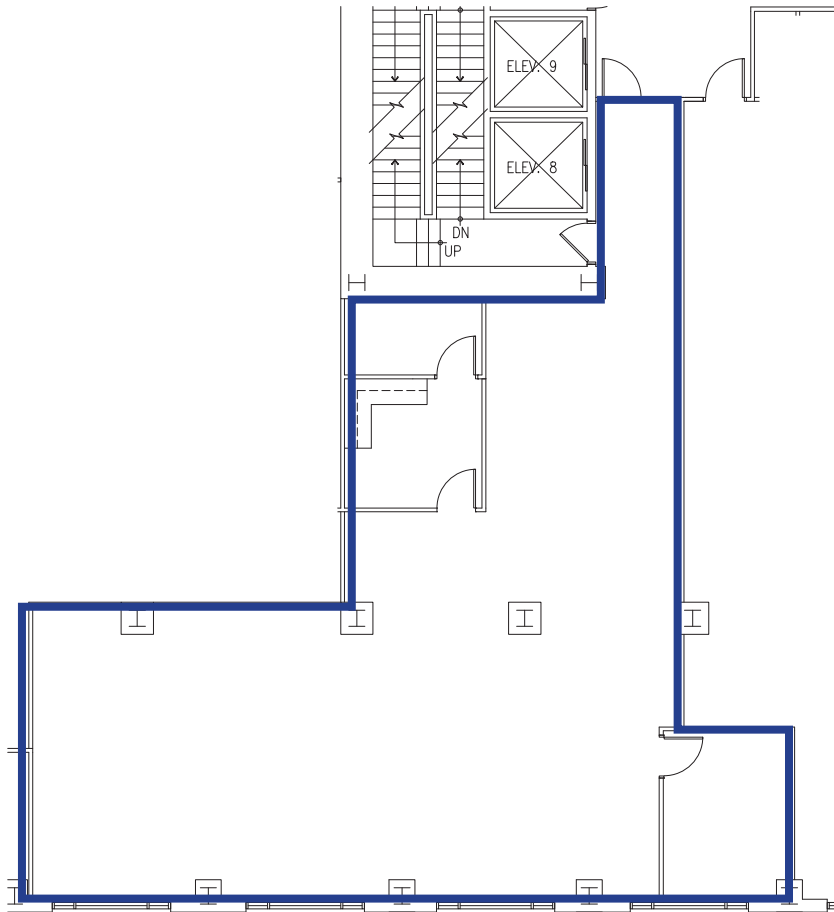
Baltimore City, Maryland

FLOOR PLANS

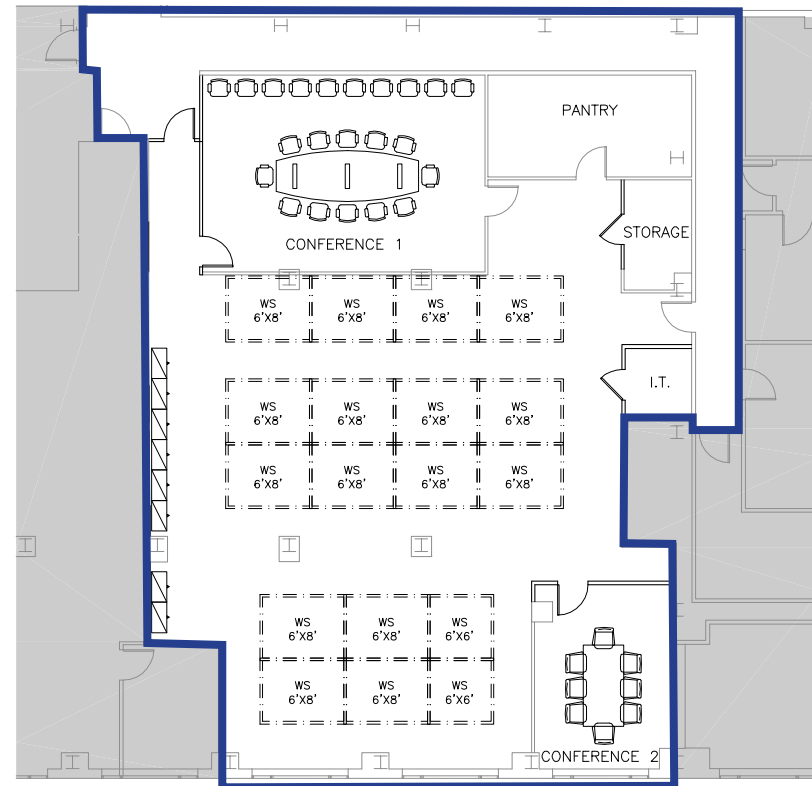
HARBOR COURT | 575 S CHARLES STREET | BALTIMORE, MARYLAND 21201

THE
RMR
GROUP

SUITE 310 - AVAILABLE 12/1/2020
2,291 SF



SUITE 315
3,876 SF



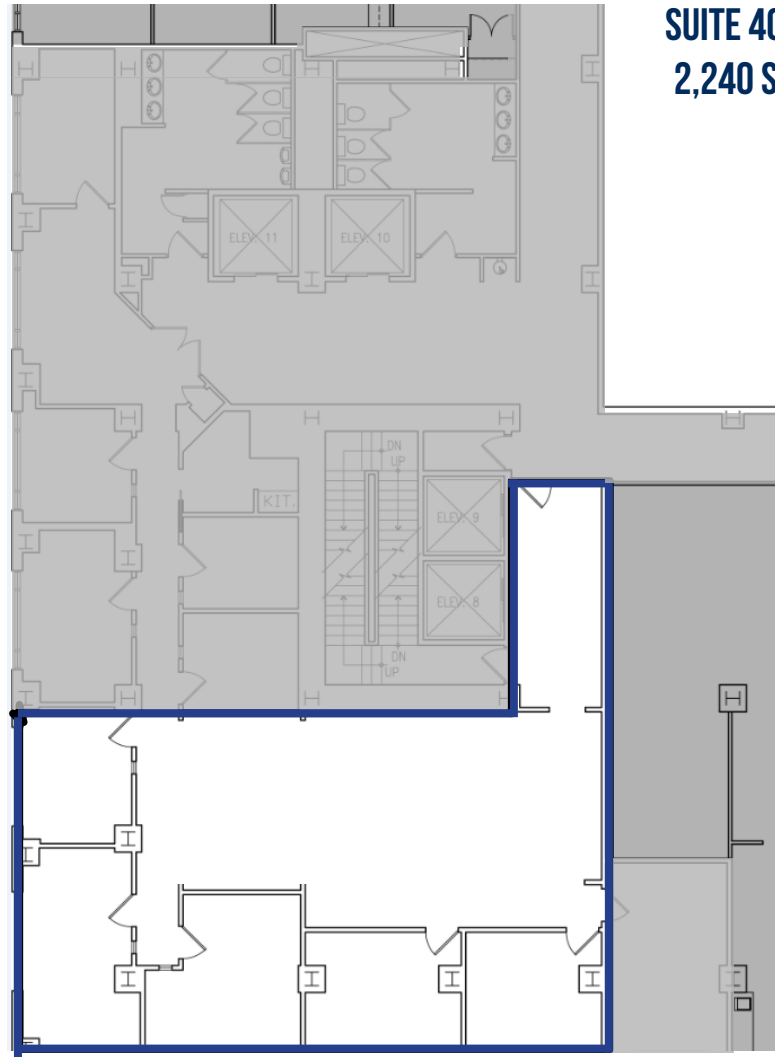
FOR LEASE

Baltimore City, Maryland

FLOOR PLANS

HARBOR COURT | 575 S CHARLES STREET | BALTIMORE, MARYLAND 21201

THE
RMR
GROUP



SUITE 400
2,240 SF

FOR LEASE

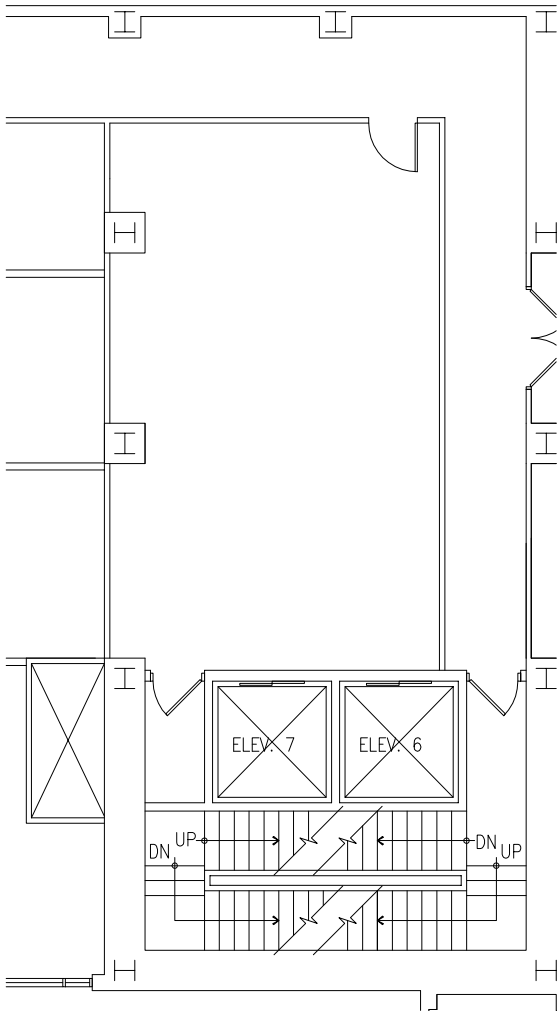
Baltimore City, Maryland

FLOOR PLANS

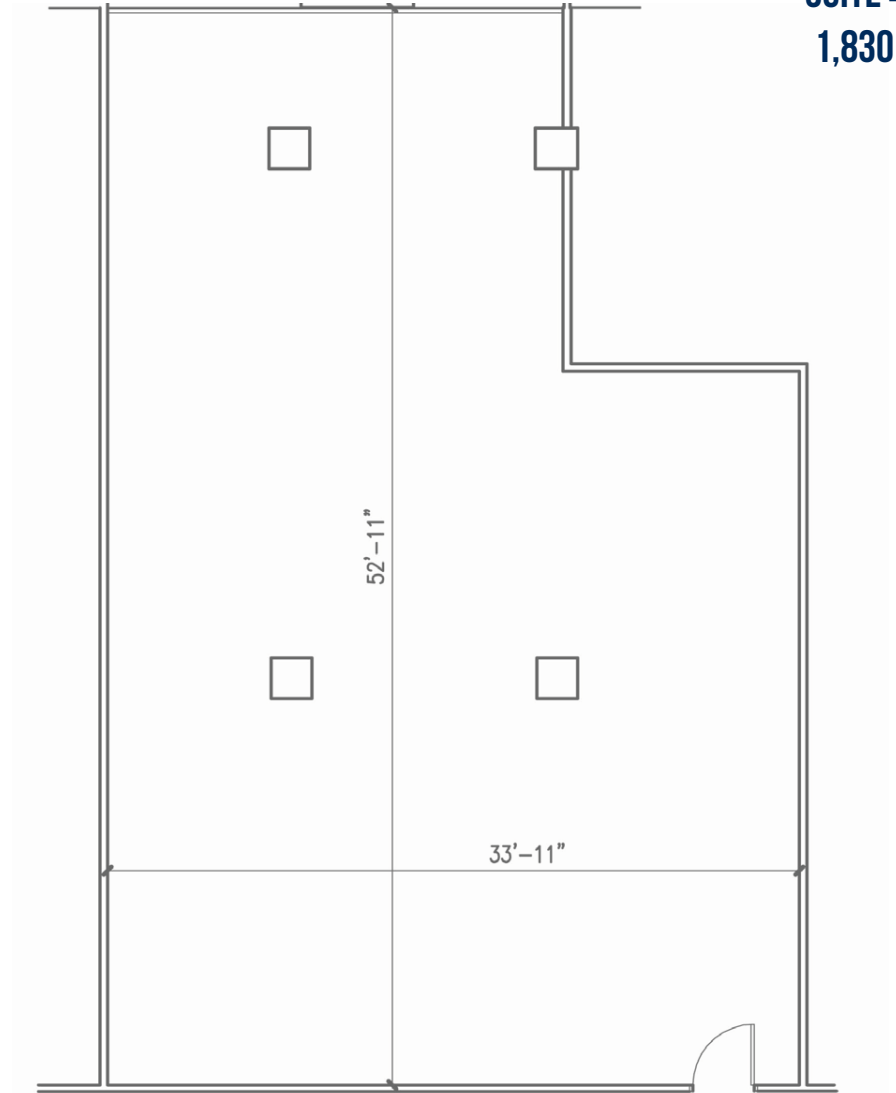
HARBOR COURT | 575 S CHARLES STREET | BALTIMORE, MARYLAND 21201

THE
RMR
GROUP

SUITE 402B
746 SF



SUITE 408
1,830 SF



FOR LEASE

Baltimore City, Maryland

FLOOR PLANS

HARBOR COURT | 575 S CHARLES STREET | BALTIMORE, MARYLAND 21201

THE
RMR
GROUP

SUITE 501
3,474 SF

