

FOR LEASE

Baltimore County, MD

1301 YORK ROAD

1301 YORK ROAD | LUTHERVILLE-TIMONIUM, MARYLAND 21093

AVAILABLE

Multiple suites available

ZONING

BL (Business Local)

TRAFFIC COUNT

38,420 AADT (York Rd/Rt. 45)

PARKING

560 existing surface spaces

HIGHLIGHTS

- ▶ New ownership: Upgraded facade and elevators in 2020
- ▶ All lobbies and restrooms are fully renovated
- ▶ Entire parking lot repaved in Spring 2021
- ▶ Signalized intersection
- ▶ Easy access to I-695 and I-83
- ▶ Sought-after Lutherville-Timonium location near the heart of Towson, MD (Towson Town Center, Towson Square)
- ▶ Two new pylon signs to provide tenants with optimal signage



Bill Whitty

☎ 410.494.4862

✉ bwhitty@mackenziecommercial.com

Mackenzie Commercial Real Estate Services, LLC

Joe Bradley

☎ 410.494.4892

✉ jbradley@mackenziecommercial.com

Dylan Bozel

☎ 410.494.4896

✉ dbozel@mackenziecommercial.com

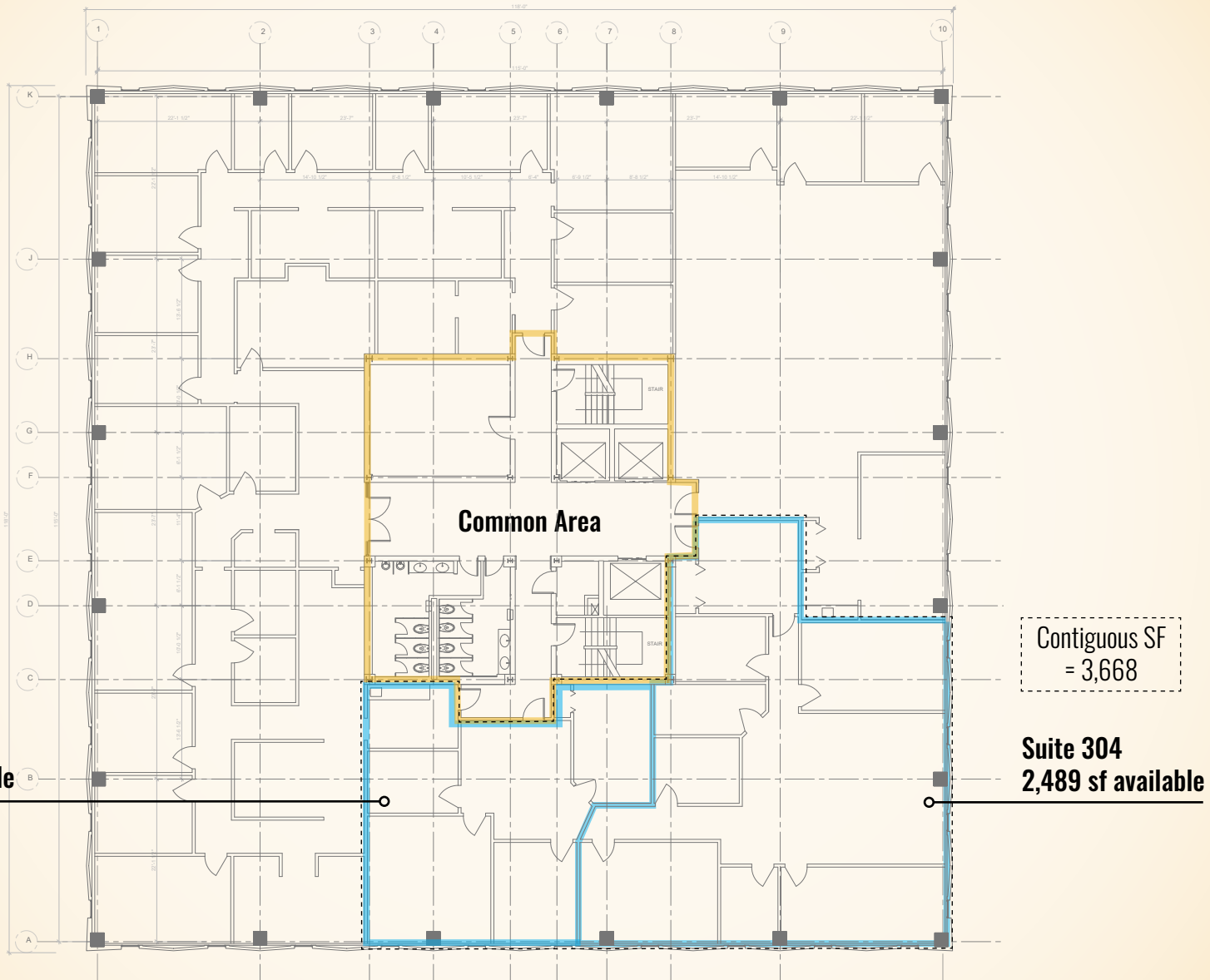
410-821-8585 • 2328 W. Joppa Road, Suite 200 | Lutherville-Timonium, Maryland 21093 • www.MACKENZIECOMMERCIAL.com

FOR LEASE

Baltimore County, MD

FLOOR PLANS: 3RD FLOOR

1301 YORK ROAD | LUTHERVILLE-TIMONIUM, MARYLAND 21093

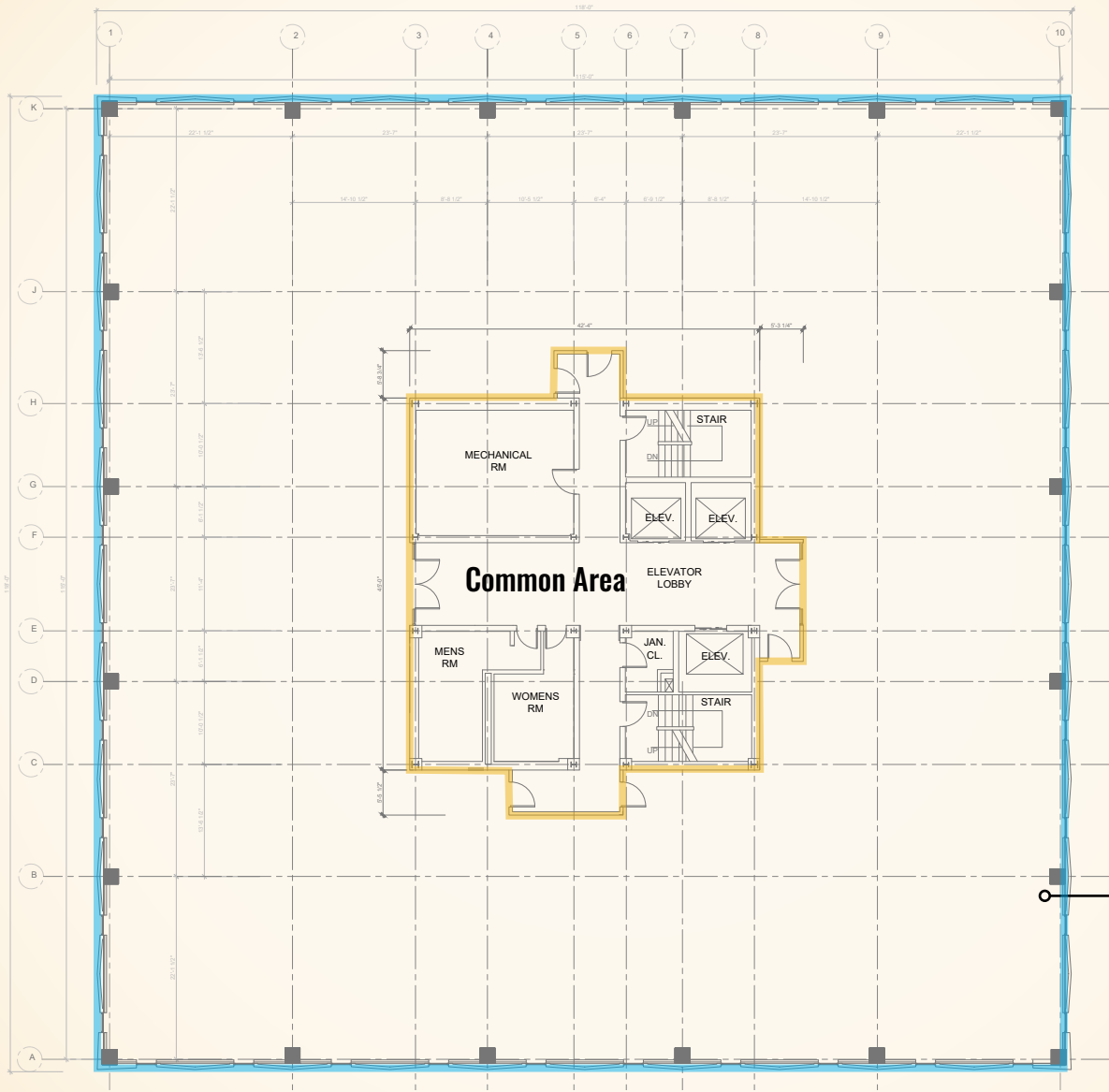


FOR LEASE

Baltimore County, MD

FLOOR PLANS: 4TH FLOOR

1301 YORK ROAD | LUTHERVILLE-TIMONIUM, MARYLAND 21093



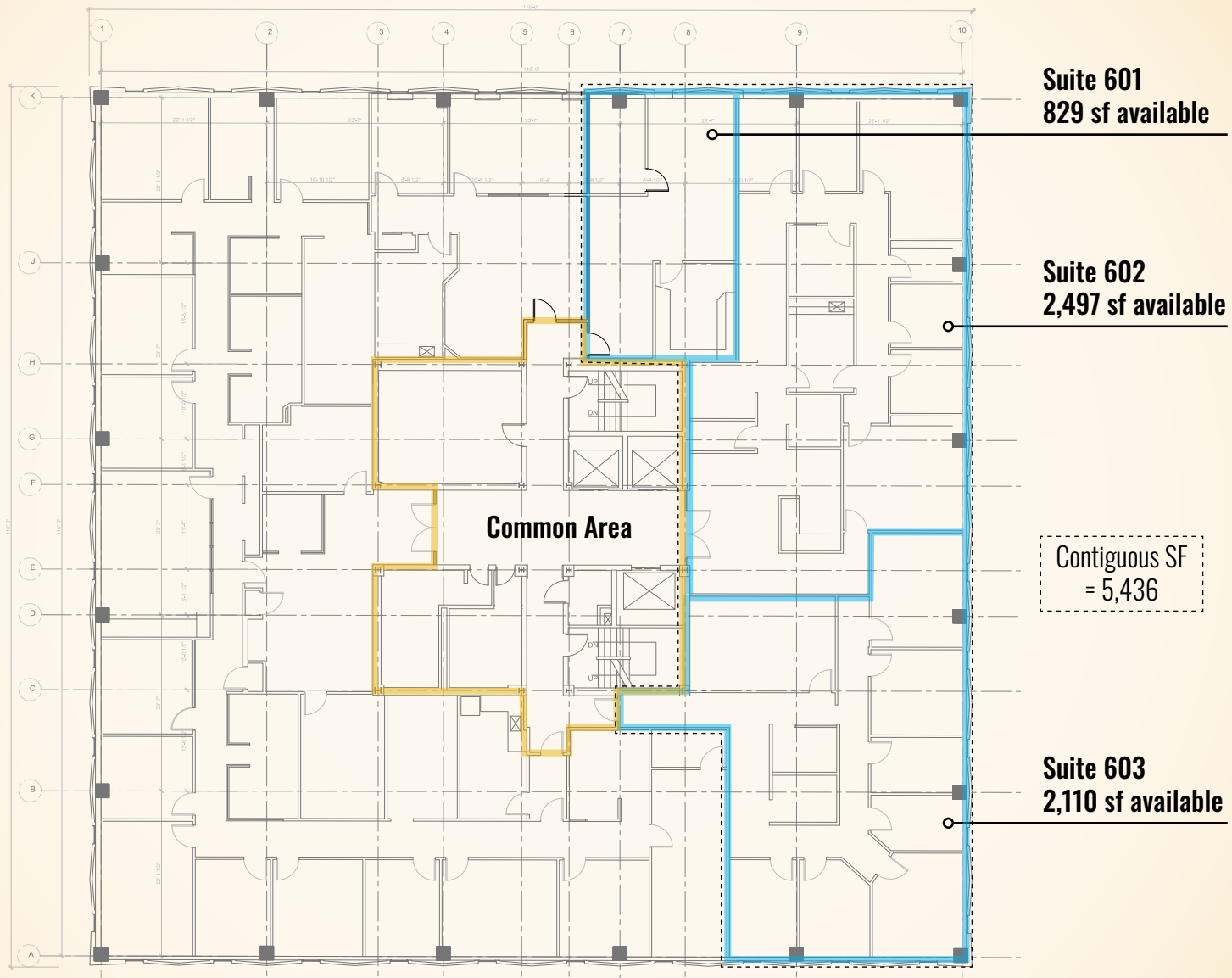
Suite 400
13,266 sf available

FOR LEASE

Baltimore County, MD

FLOOR PLANS: 6TH FLOOR

1301 YORK ROAD | LUTHERVILLE-TIMONIUM, MARYLAND 21093

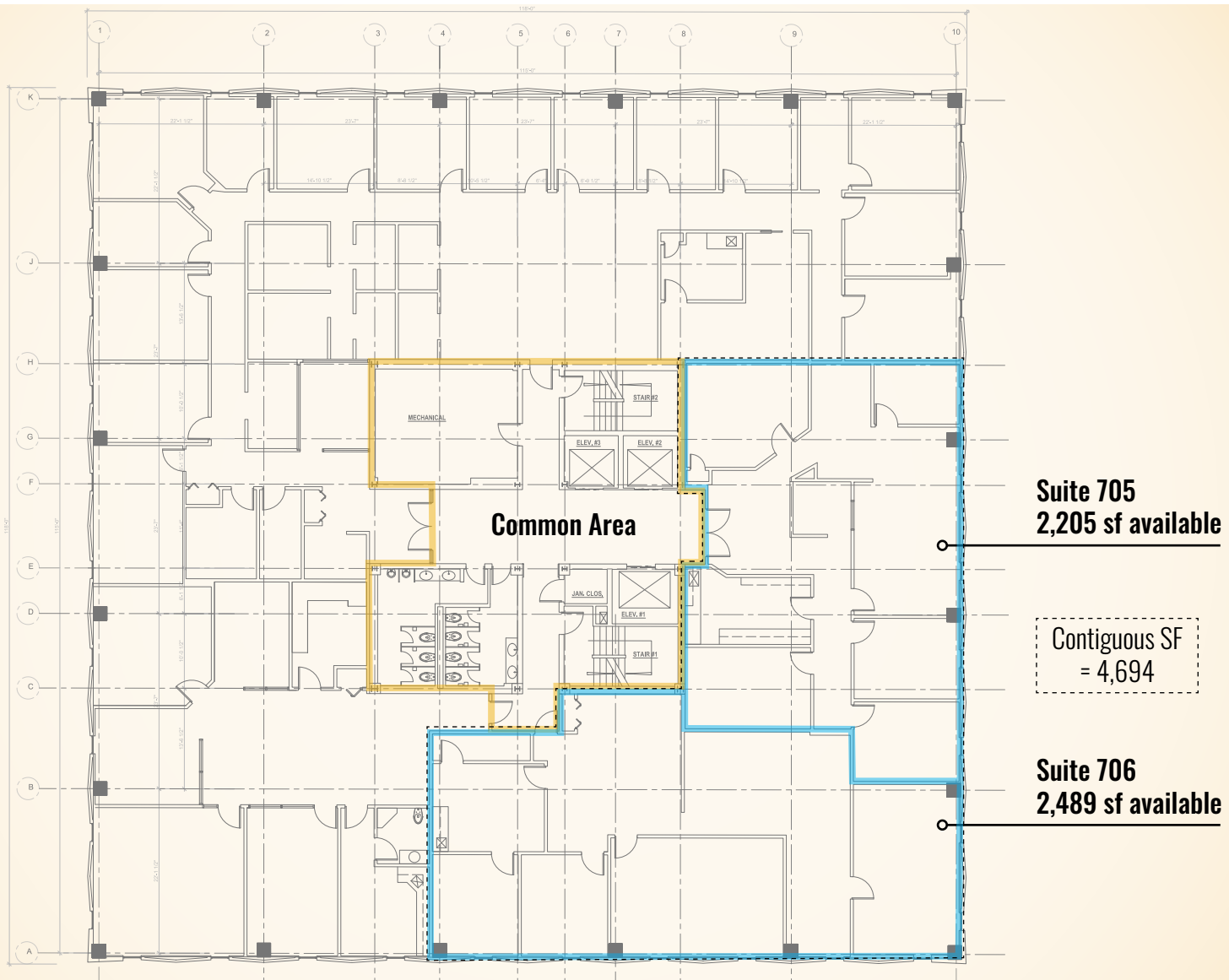


FOR LEASE

Baltimore County, MD

FLOOR PLANS: 7TH FLOOR

1301 YORK ROAD | LUTHERVILLE-TIMONIUM, MARYLAND 21093



FOR LEASE

Baltimore County, MD

BIRDSEYE

1301 YORK ROAD | LUTHERVILLE-TIMONIUM, MARYLAND 21093

