



THE O'DEA MEDICAL ARTS BUILDING

7505 OSLER DRIVE
TOWSON | MARYLAND



FOR LEASE

Baltimore County, MD

THE O'DEA MEDICAL ARTS BUILDING

7505 OSLER DRIVE | TOWSON, MARYLAND 21204

AVAILABLE

Suite 203: 1,823 sf

Suite 206 1,165 sf (available 4/1/21)

Suite 404: 1,098 sf

Suite 501: 1,728 sf

RENTAL RATE

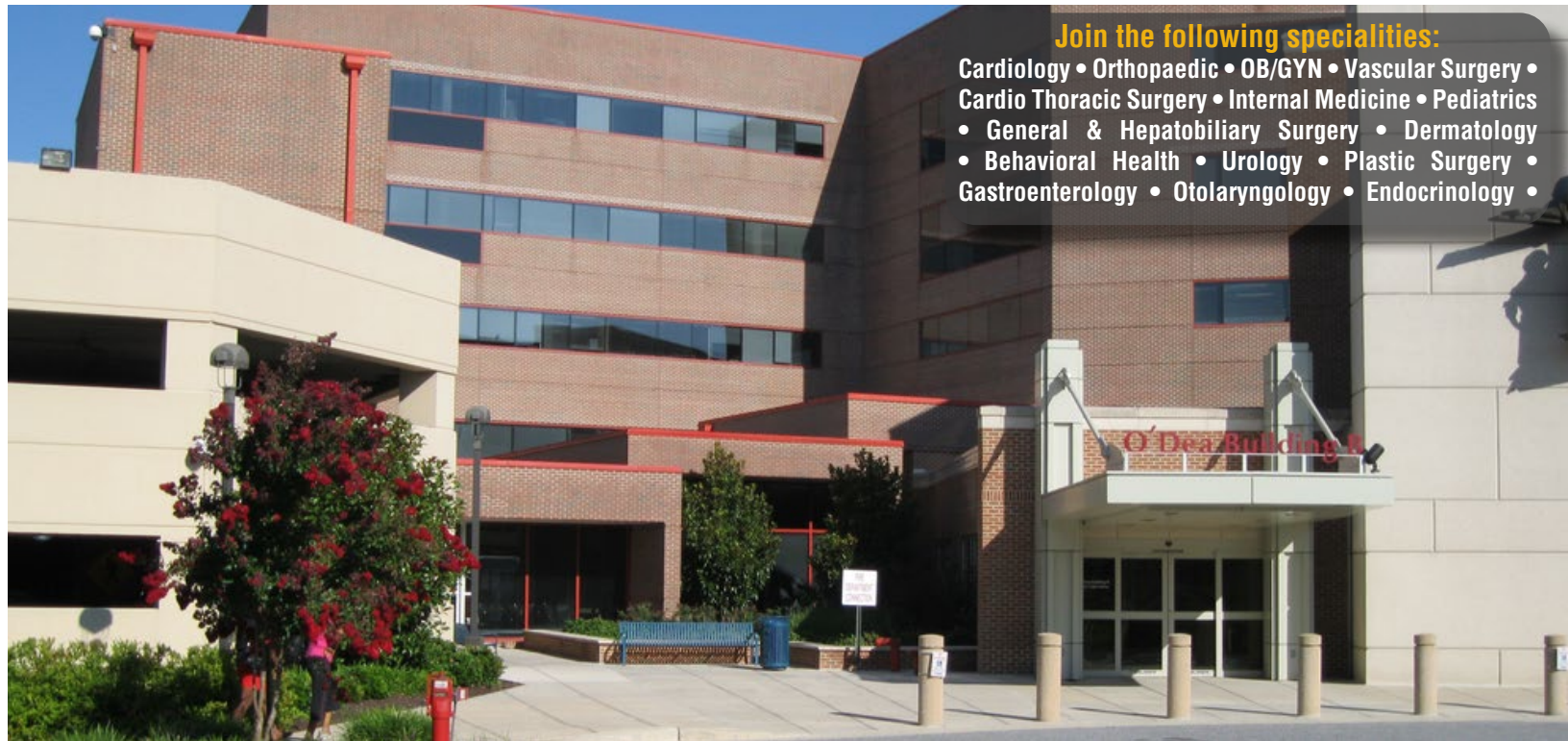
\$20.50/sf, FS

HIGHLIGHTS

- ▶ Class A medical office space available on the campus of University of Maryland St. Joseph Medical Center
- ▶ A variety of sizes to accommodate large and small practices
- ▶ Covered parking with direct access to the building
- ▶ Easy access to I-695 via N. Charles Street

Join the following specialities:

Cardiology • Orthopaedic • OB/GYN • Vascular Surgery •
Cardio Thoracic Surgery • Internal Medicine • Pediatrics
• General & Hepatobiliary Surgery • Dermatology
• Behavioral Health • Urology • Plastic Surgery •
Gastroenterology • Otolaryngology • Endocrinology •



Joe Bradley

☎ 410.494.4892

✉ jbradley@mackenziecommercial.com

MacKenzie Commercial Real Estate Services, LLC • 410-821-8585 • 2328 W. Joppa Road, Suite 200 | Lutherville-Timonium, Maryland 21093 • www.MACKENZIECOMMERCIAL.com

Matt Mueller

☎ 410.494.6658

✉ mmueller@mackenziecommercial.com

Henson Ford

☎ 410.494.6657

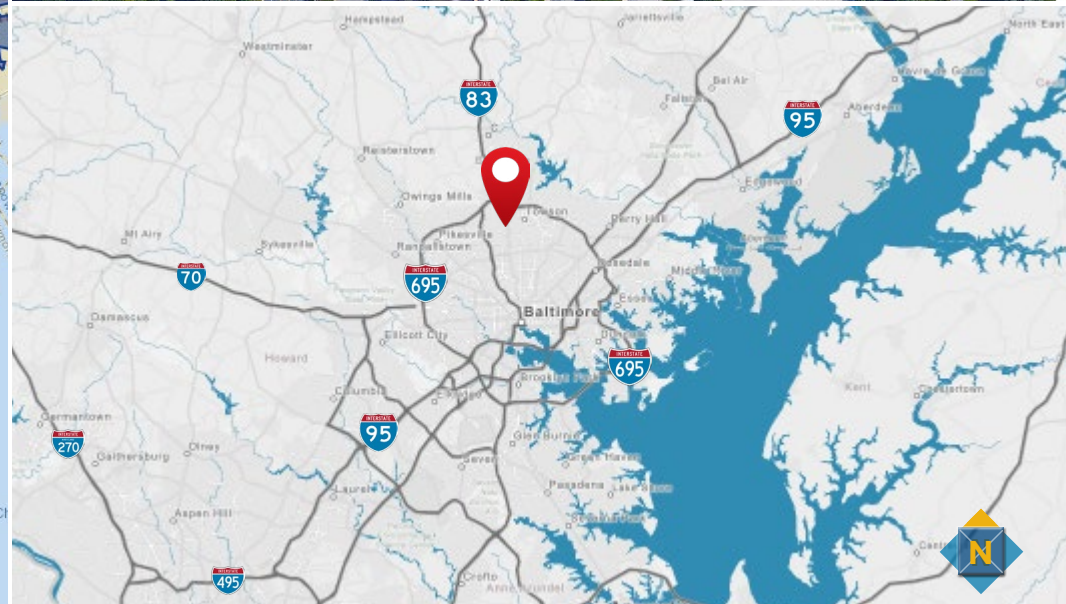
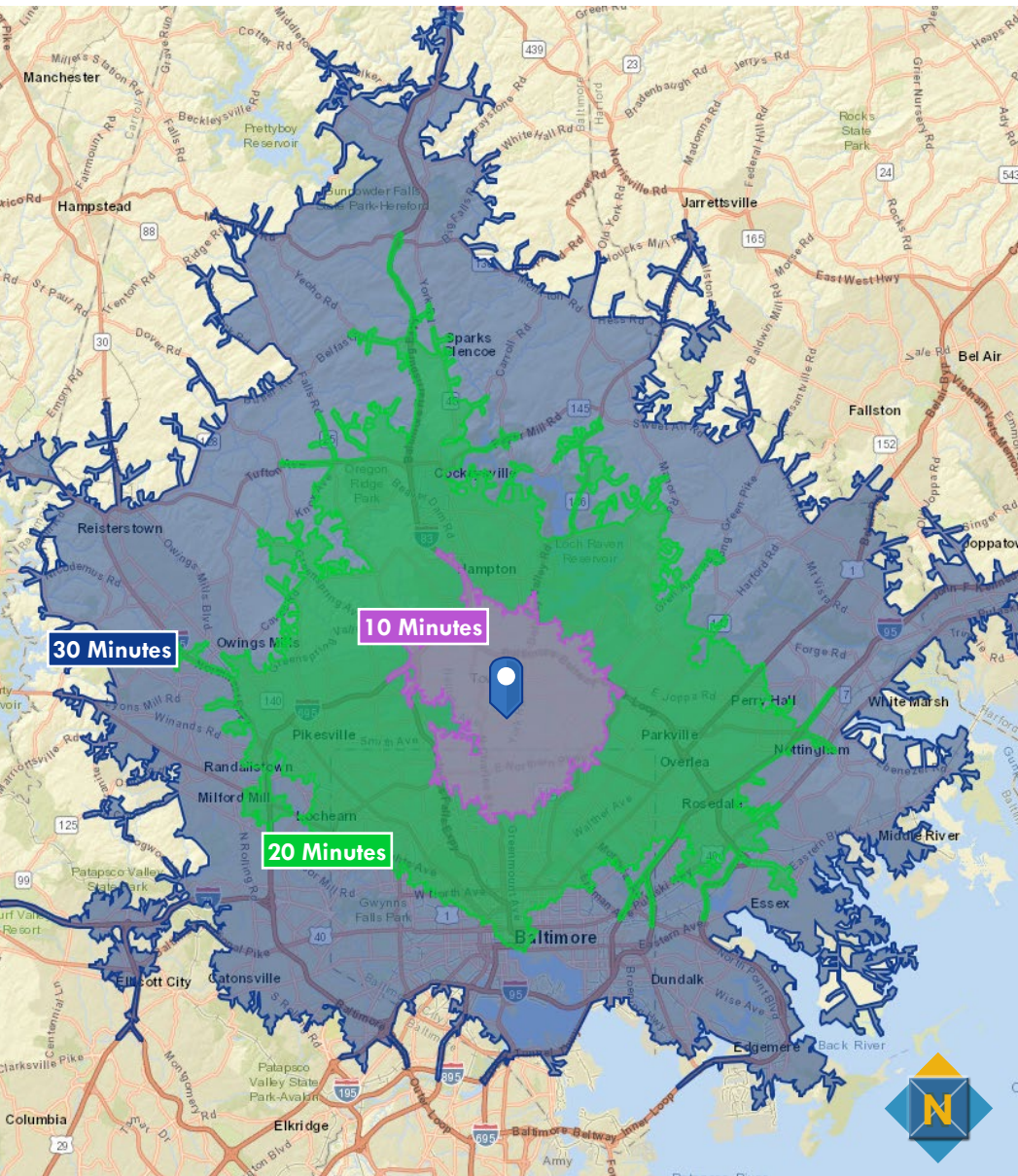
✉ hford@mackenziecommercial.com

FOR LEASE

Baltimore County, MD

LOCATION

THE O'DEA MEDICAL ARTS BUILDING | 7505 OSLER DRIVE | TOWSON, MARYLAND 21204



FOR LEASE

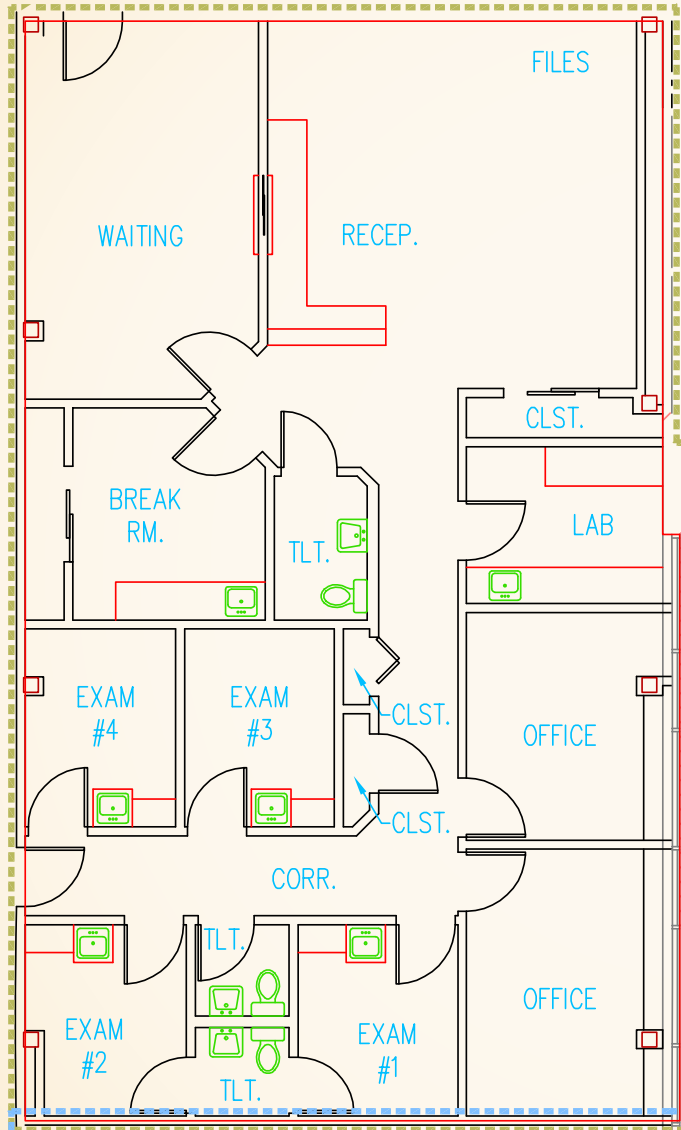
Baltimore County, MD

FLOOR PLAN: 2ND FLOOR

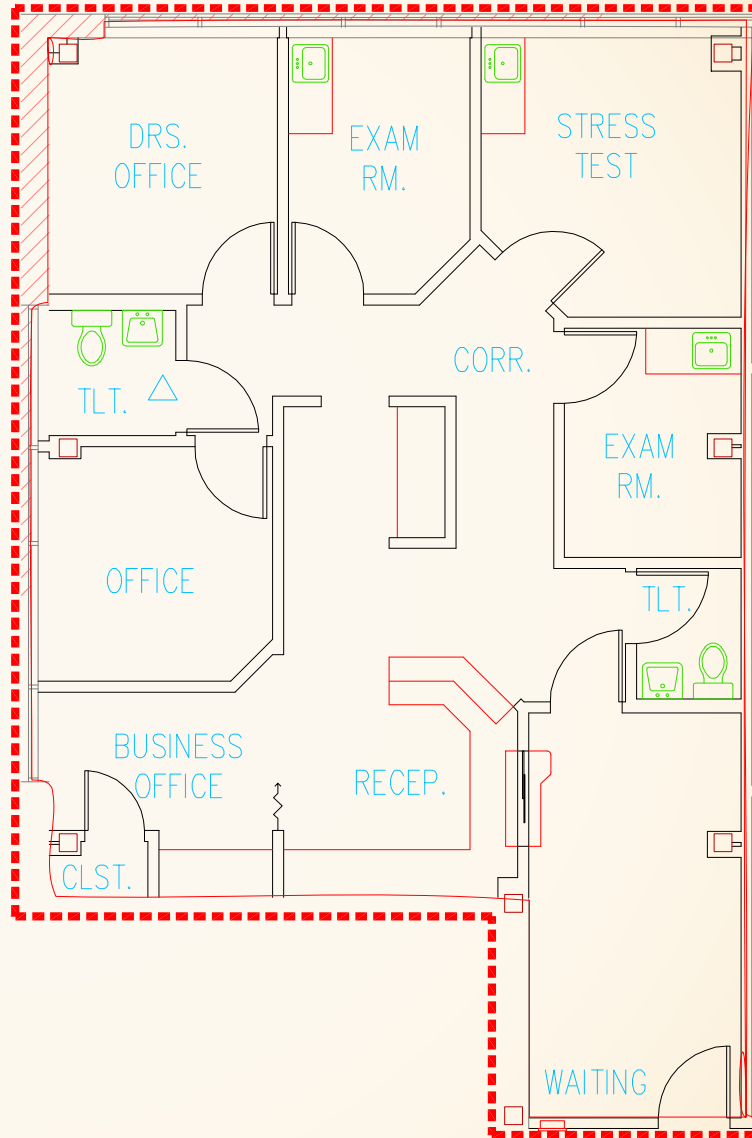
THE O'DEA MEDICAL ARTS BUILDING | 7505 OSLER DRIVE | TOWSON, MARYLAND 21204

SECOND FLOOR

Suite 203:
1,282 sf



Suite 206:
1,165 sf



FOR LEASE

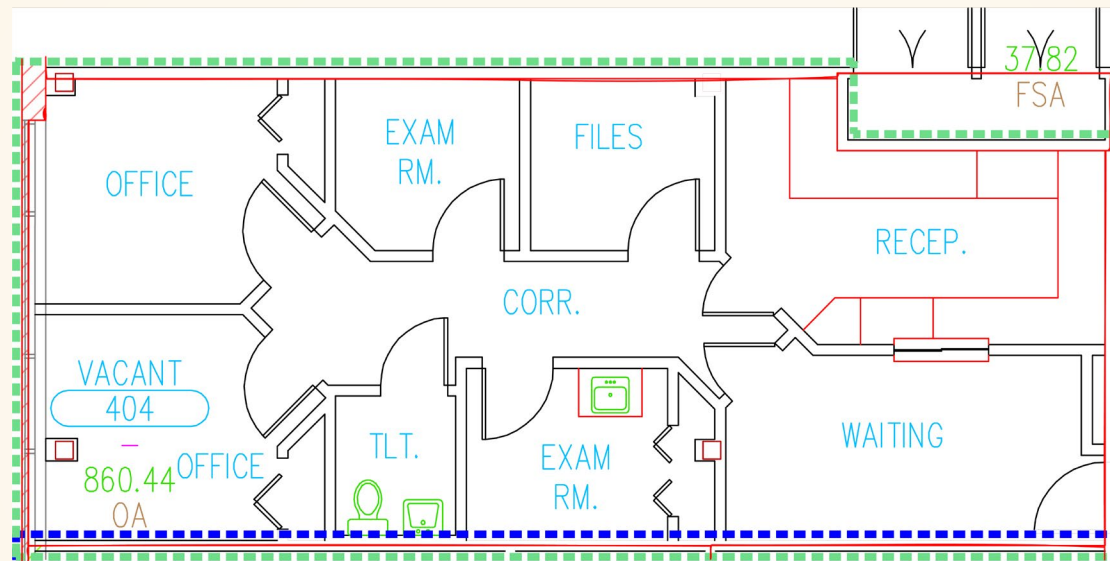
Baltimore County, MD

FLOOR PLAN: 4TH FLOOR

THE O'DEA MEDICAL ARTS BUILDING | 7505 OSLER DRIVE | TOWSON, MARYLAND 21204

FOURTH FLOOR

Suite 404:
1,098 sf



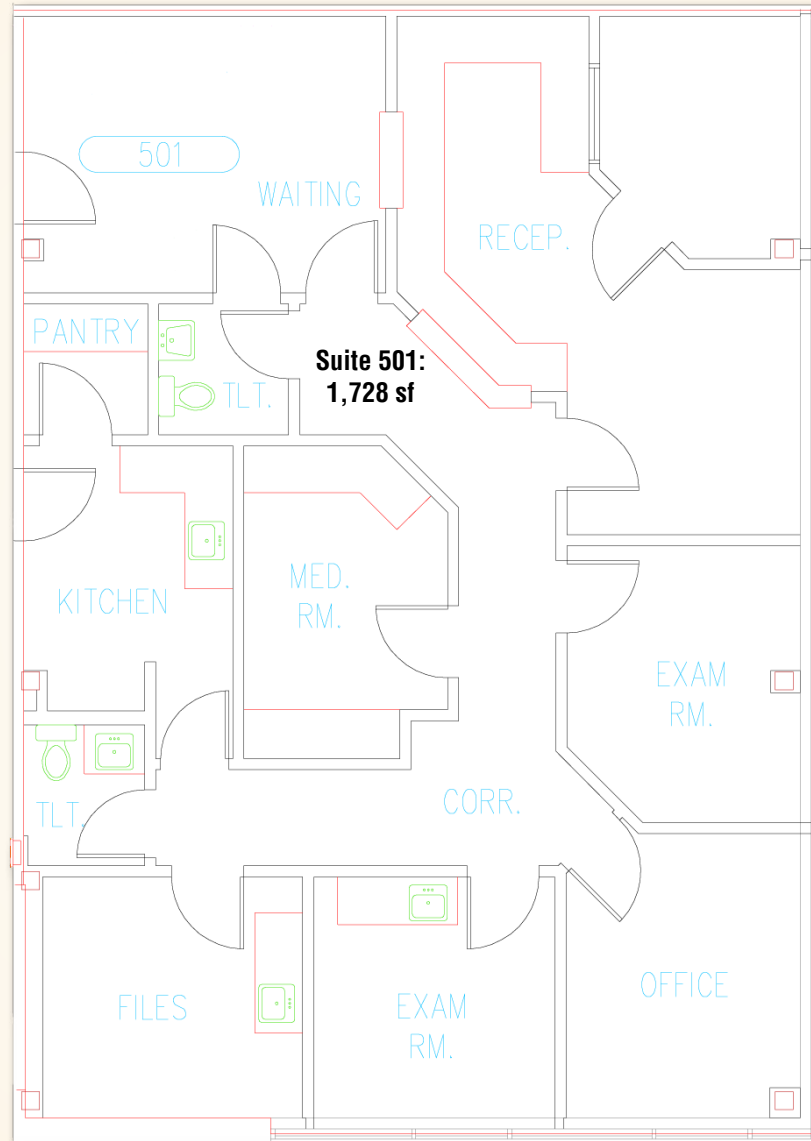
FOR LEASE

Baltimore County, MD

FLOOR PLAN: 5TH FLOOR

THE O'DEA MEDICAL ARTS BUILDING | 7505 OSLER DRIVE | TOWSON, MARYLAND 21204

FIFTH FLOOR



FOR LEASE

Baltimore County, MD

DEMOGRAPHICS

THE O'DEA MEDICAL ARTS BUILDING | 7505 OSLER DRIVE | TOWSON, MARYLAND 21204

MEDICAL EXPENDITURES

	1 mile	2 miles	3 miles
Total Healthcare	\$46,390,427	\$159,658,464	\$322,888,640
Physician Services	\$17,010,969	\$57,643,301	\$15,190,367
Eyecare Services	\$521,638	\$1,791,621	\$3,652,462
Lab Tests, X-Rays	\$525,265	\$1,779,586	\$3,613,342
Dental Services	\$2,255,644	\$10,980,712	\$22,031,327
Prescription Drugs	\$3,353,959	\$12,106,516	\$24,594,452
Nonprescription Drugs	\$1,108,559	\$3,821,785	\$7,673,748
Eyeglasses and Contact Lenses	\$818,714	\$2,762,550	\$5,569,633
Median Age	24.9	35.0	36.1

