

# WM

## WESTOWN MARKETPLACE

41ST STREET & ELLIS ROAD

### Retail Space for Lease

8000 West 41st Street  
Sioux Falls, SD 57106



## New Exciting Development!



### size

8,000 - 15,000 sqft



### price

\$12.00 per sqft (NNN)



### zoning

C-3 Commercial



### population

50,000 people live in  
Sioux Falls WEST of  
Interstate 29!



### location

New retail development  
located on the NE  
corner of 41st Street  
and Ellis Road in West  
Sioux Falls.



### co-tenancy

Sanford Clinic, Family  
Wellness, Shenanigan's Bar  
& Grill, ACE Hardware,  
Walgreens, Dollar General,  
Frontier Elementary School,  
Memorial Middle School,  
Roosevelt High School

Information deemed reliable but not guaranteed.



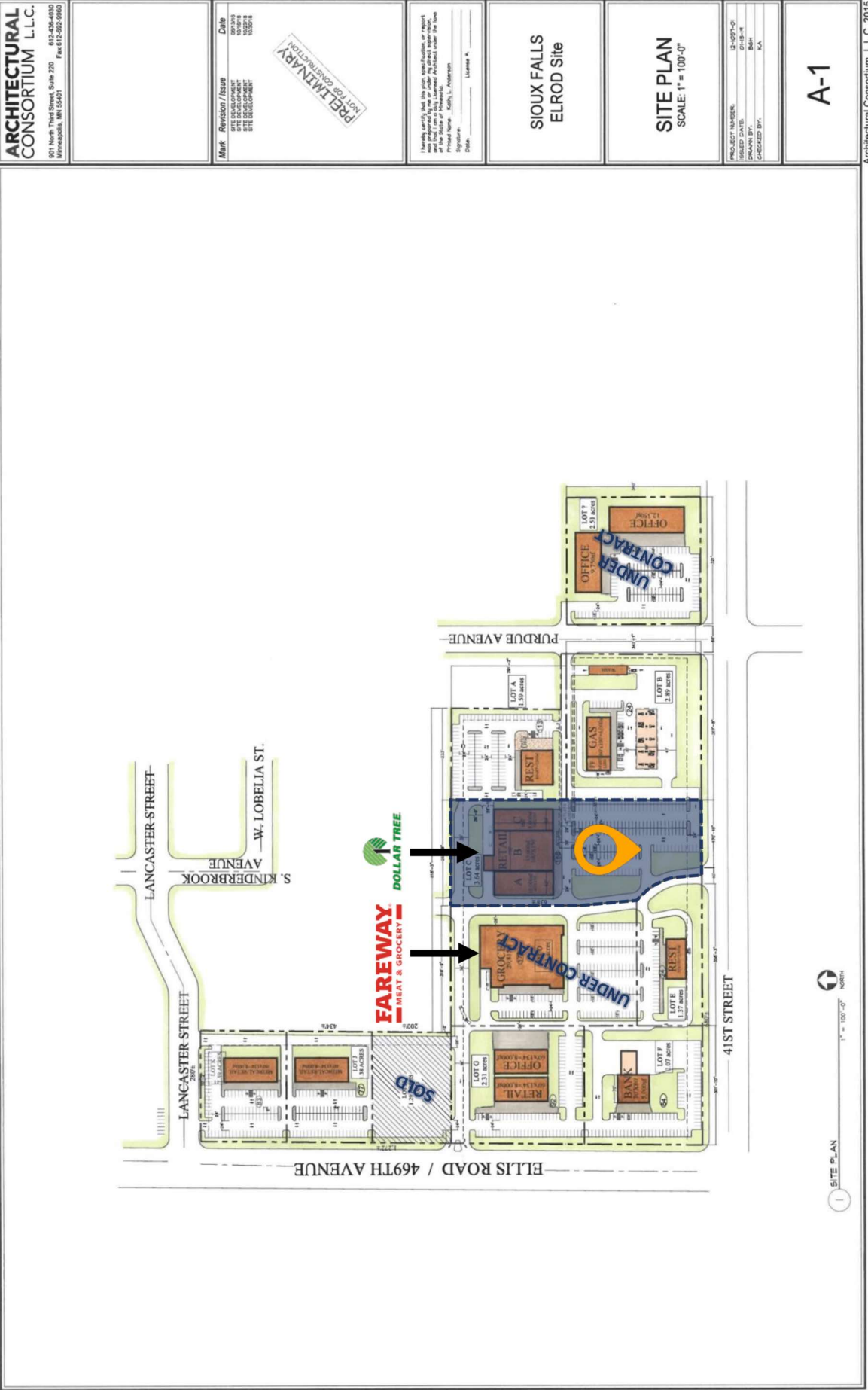
Lake Lorraine | 2571 Westlake Drive #100  
Sioux Falls, South Dakota 57106  
VBClink.com | 605.361.8211

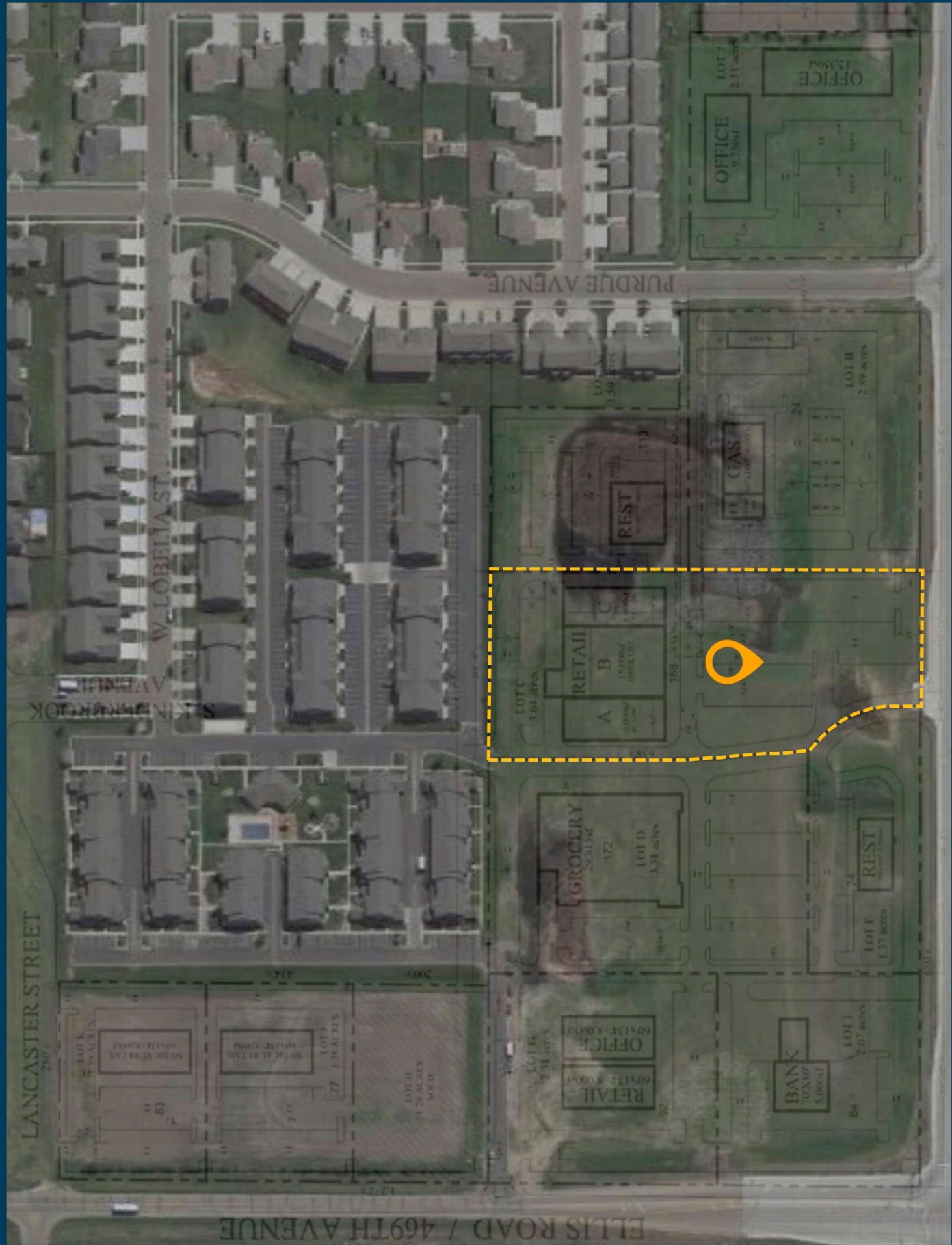


605.376.0127  
Ryan@VBClink.com



# WESTOWN MARKETPLACE SITEPLAN

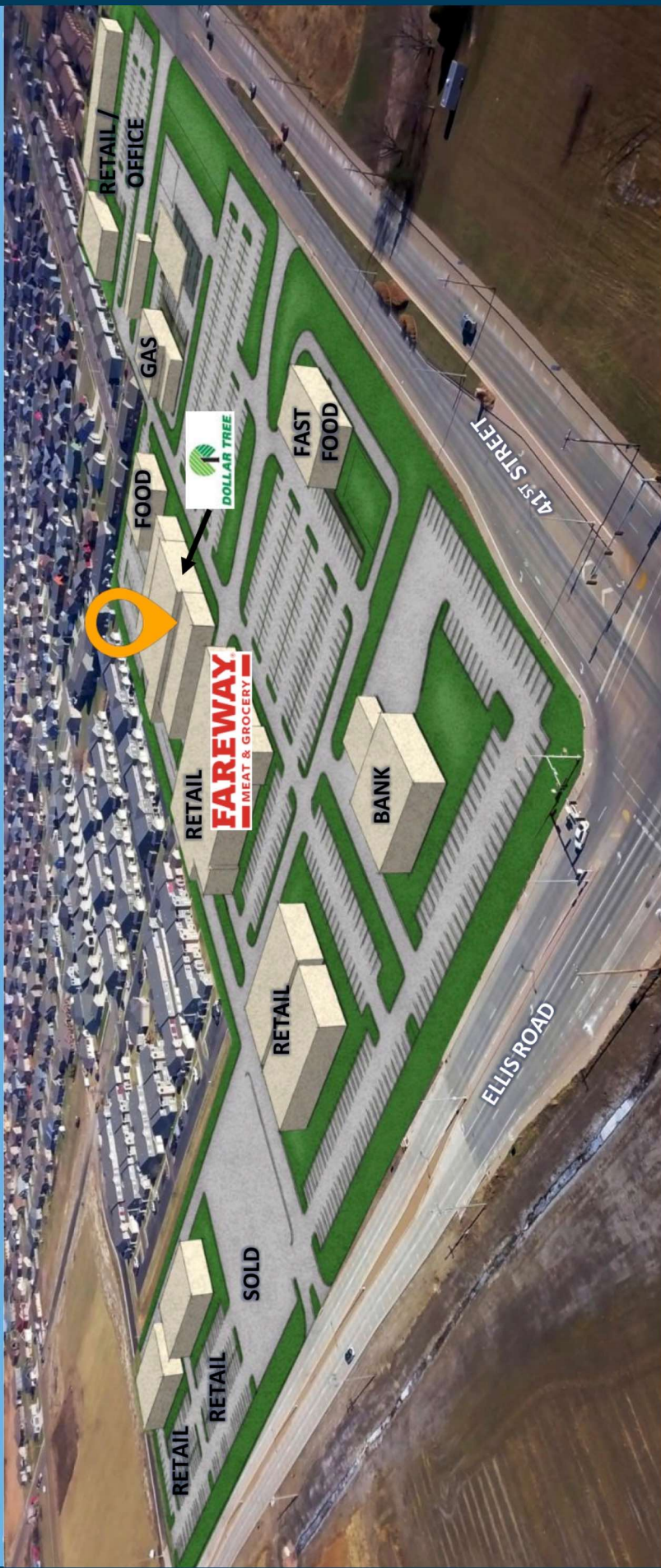




# SITEPLAN



# WESTOWN MARKETPLACE DEVELOPMENT



  
**WESTOWN MARKETPLACE**  
41ST STREET & ELLIS ROAD

# EXTERIOR RENDERING

AVAILABLE

AVAILABLE

