

**FOR
LEASE**

LOUISE AVENUE OFFICE SPACE

1ST FLOOR OFFICE SUITE (#103) FOR LEASE



4320 SOUTH LOUISE AVENUE
SIOUX FALLS, SD 57106



SIZE

136 sq. ft



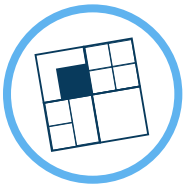
PRICE

\$250/month



LOCATION

Two-story office building
located along Louise
Avenue near 49th Street



ZONING

O-Office



TRAFFIC

Daily traffic count
of 21,000 vehicles



COTENANCY

Five Guys, Caribou Coffee,
Hy-Vee, Qdoba, Starbucks
Dollar Tree, The Empire Mall,
Sanford Wellness Center,
Jimmy John's

Information deemed reliable, but not guaranteed.



2571 S Westlake Drive #100
Sioux Falls, SD 57106
605.361.8211 | VBCcommercial.com



605.310.4509
mike.knudson@vbclink.com

AERIAL MAP



49th St.



49th St.



49th St.

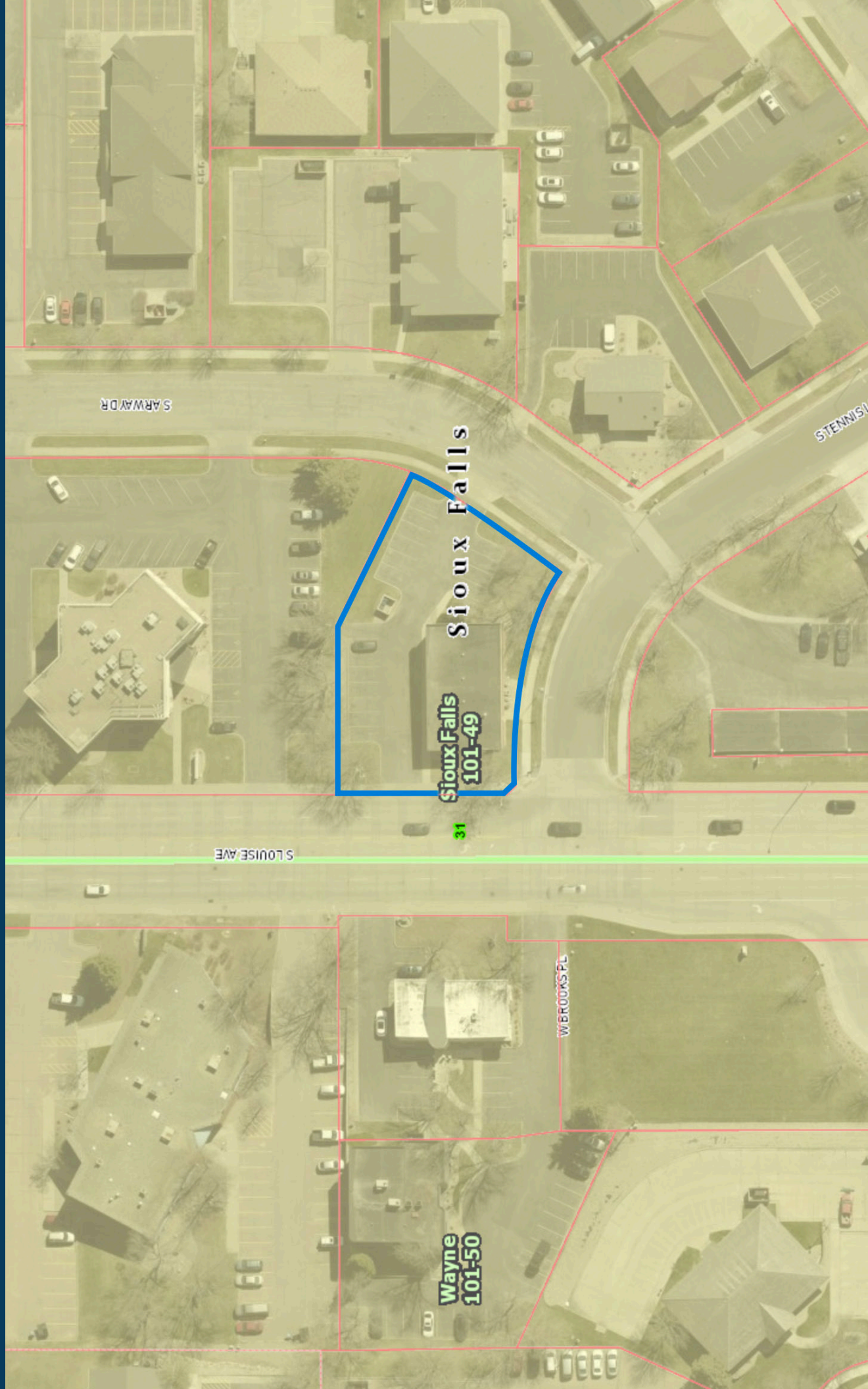


49th St.

57th St.

57th St.

SITE PLAN



FLOOR PLAN



PHOTOS: EXTERIOR



PHOTOS: INTERIOR

