

NEW SPECULATIVE DEVELOPMENT > 116,600 SF

Park 94

BUILDING 3

1570 INTERNATIONAL DRIVE
MOUNT PLEASANT, WI

Property Overview

- > Building Size: 116,600 SF (Divisible to 20,000 SF)
- > Site Area: 6.89 Acres
- > Office: 1,740 SF (Spec Office)
- > Exterior Docks: 18 Docks (Expandable)
- > Drive-In-Doors: 2 Doors
- > Ceiling Height: 30'
- > Trailer Positions: 12 Trailers
- > Car Parking: 82 Parking Stalls
- > Floor: 7" Unreinforced Concrete
- > Sprinkler: ESFR
- > Electrical Service: 1200 Amp 277/480v
- > Warehouse Lighting: LED w/motion sensors
- > Column Spacing: 50' x 55'
- > **Lease Rate: STO**

Contact Us:

NED FRANK

847 698 8261

ned.frank@colliers.com

PAT HAKE

847 698 8525

pat.hake@colliers.com

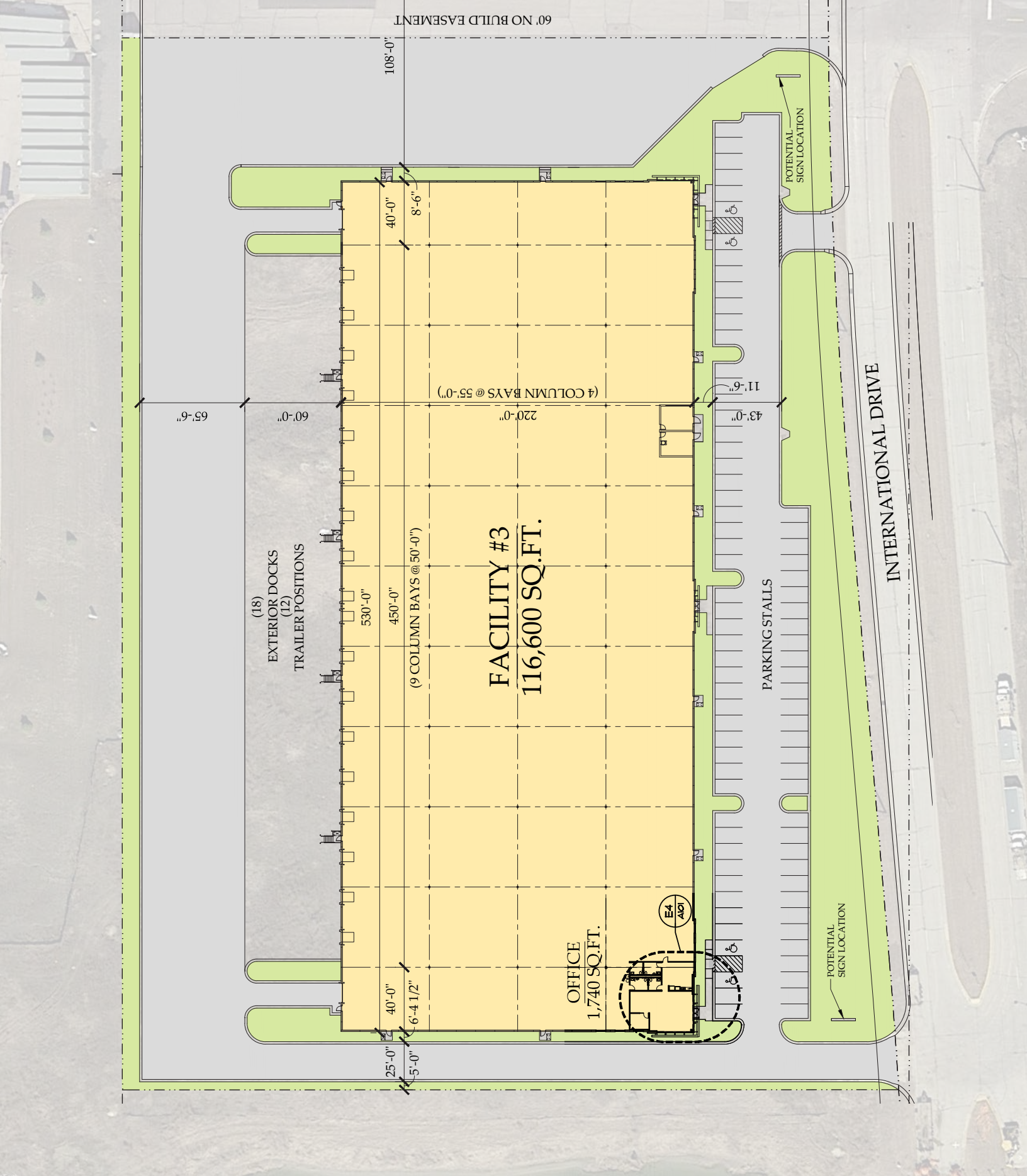
STEVE SEWART

414 278 6823

steve.sewart@colliers.com

COLLIERS INTERNATIONAL
6250 N. River Road, Suite 11-100
Rosemont, IL 60018
www.colliers.com





60' NO BUILD EASEMENT

108'-0"

65'-6"

60'-0"

(4 COLUMN BAYS @ 55'-0")

220'-0"

11'-6"

43'-0"

(18)
EXTERIOR DOCKS
(12)
TRAILER POSITIONS

530'-0"

450'-0"

(9 COLUMN BAYS @ 50'-0")

FACILITY #3
116,600 SQ.FT.

OFFICE
1,740 SQ.FT.

E4
A20

PARKING STALLS

INTERNATIONAL DRIVE

POTENTIAL
SIGN LOCATION

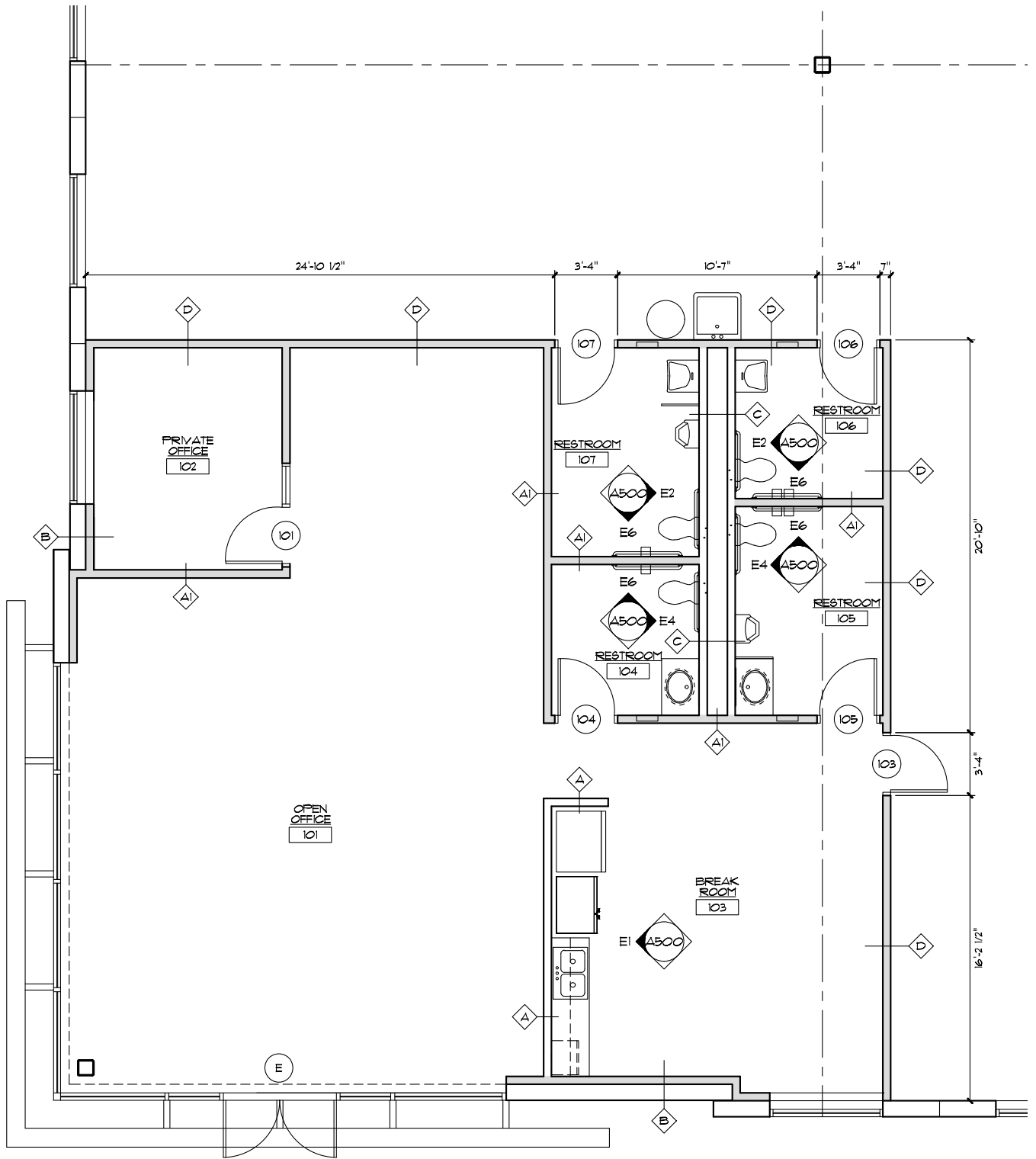
POTENTIAL
SIGN LOCATION



NED FRANK
847 698 8261
ned.frank@colliers.com

PAT HAKE
847 698 8525
pat.hake@colliers.com

STEVE SEWART
414 278 6823
steve.sewart@colliers.com



E1 OFFICE FLOOR PLAN
 SCALE: 1/4" = 1'-0"
 PLAN NORTH



NED FRANK
 847 698 8261
 ned.frank@colliers.com

PAT HAKE
 847 698 8525
 pat.hake@colliers.com

STEVE SEWART
 414 278 6823
 steve.sewart@colliers.com



20

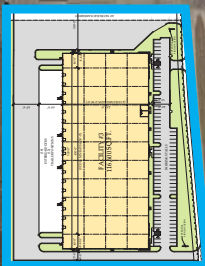
in sink erator

INTERNATIONALE DRIVE

Seda
INTERNATIONAL
PACKAGING GROUP

AST
ASTRO PACKAGING INC.

goodwill



Seda
INTERNATIONAL
PACKAGING GROUP

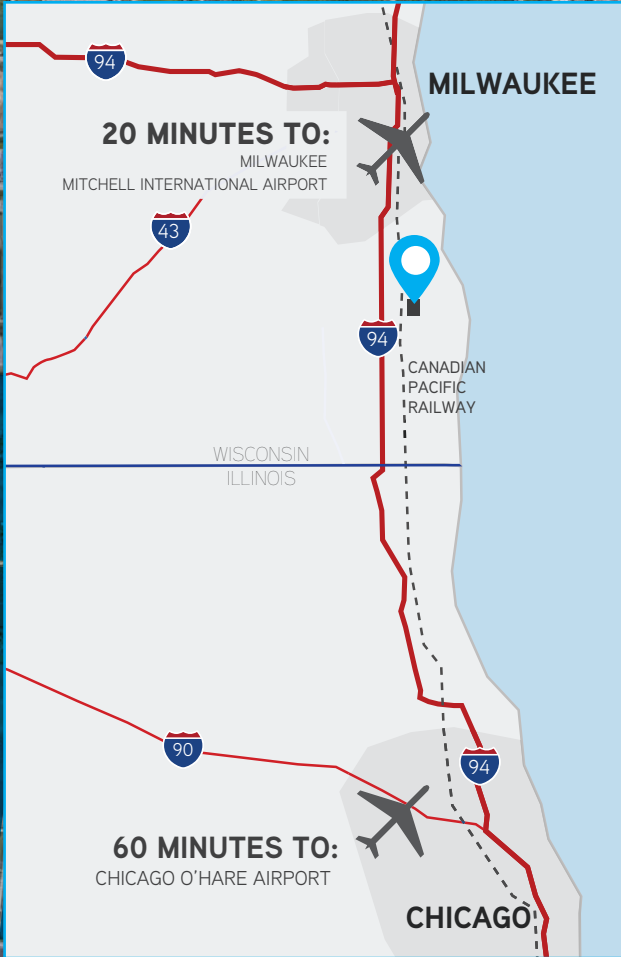
INTERNATIONAL DRIVE
EXPANSION
TO HWY 11



NED FRANK
847 698 8261
ned.frank@colliers.com

PAT HAKE
847 698 8525
pat.hake@colliers.com

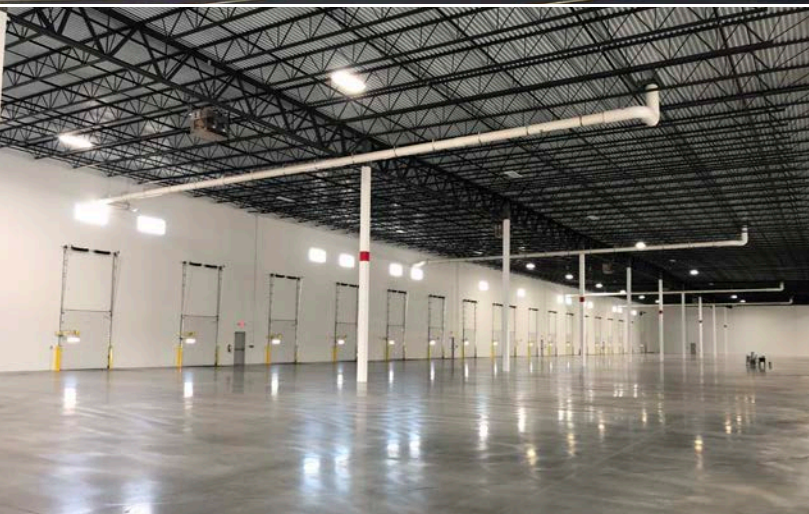
STEVE SEWART
414 278 6823
steve.sewart@colliers.com



NED FRANK
847 698 8261
ned.frank@colliers.com

PAT HAKE
847 698 8525
pat.hake@colliers.com

STEVE SEWART
414 278 6823
steve.sewart@colliers.com



NED FRANK
847 698 8261
ned.frank@colliers.com

PAT HAKE
847 698 8525
pat.hake@colliers.com

STEVE SEWART
414 278 6823
steve.sewart@colliers.com