

BUILD-TO-SUIT COPPER CREEK COMMERCIAL BUILDING

EAST 26TH STREET & HWY 11/VETERANS PARKWAY SIOUX FALLS SD 57103

**FOR
LEASE**



Commercial Build-To-Suit Near Booming Dawley Farm Village



SIZE
8,342 SF



PRICE
\$19.50 PSF



LOCATION
Near the busy & expanding Dawley Farm Village at the signalized corner of East 26th St & Hwy 11/Veteran's Parkway.



TRAFFIC COUNT
13,200 Cars/Day



AVAILABLE
To be determined based on lease & completion of construction.



COTENANCY
First Dakota National Bank, Title Loans Express, Creative Steps Childcare Center, Rosa Parks Elementary School, Dawley Farm Village & more.

Information deemed reliable but not guaranteed.



605.361.8211 | VBCcommercial.com

2571 S Westlake Dr #100 Sioux Falls SD 57106

**MIKE
VAN BUSKIRK**
605.361.8211
mike@vbclink.com

SITE AREA



605.361.8211 | VBCcommercial.com

2571 S Westlake Dr #100 Sioux Falls SD 57106

MIKE
VAN BUSKIRK
605.361.8211
mike@vbclink.com

PLANS – SHELL BUILDING



1 BUILDING ELEVATION - EAST
1/8" = 1'-0"



2 BUILDING ELEVATION - WEST
1/8" = 1'-0"



3 BUILDING ELEVATION - NORTH
1/8" = 1'-0"



4 BUILDING ELEVATION - SOUTH
1/8" = 1'-0"

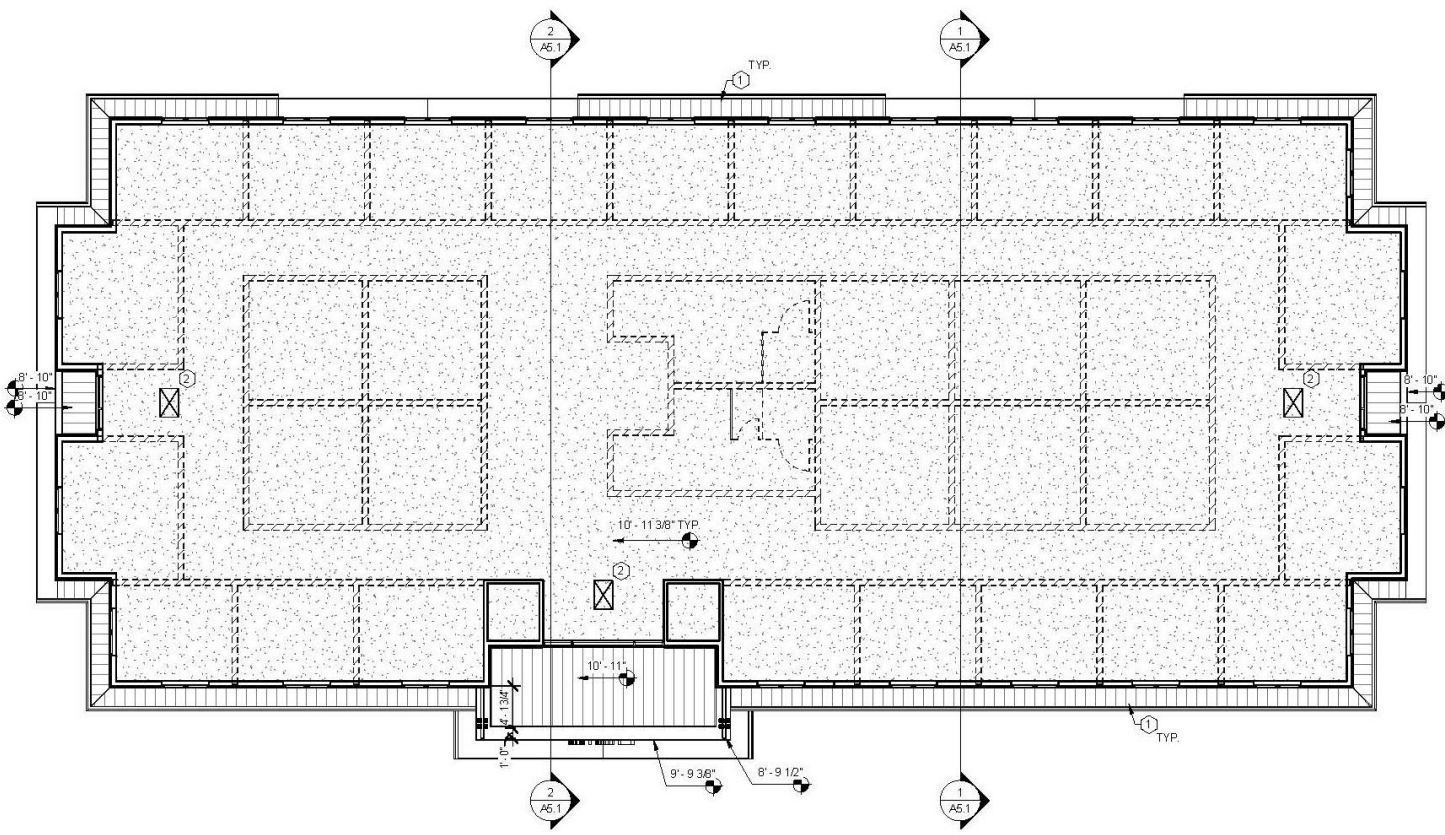


605.361.8211 | VBCcommercial.com

2571 S Westlake Dr #100 Sioux Falls SD 57106

MIKE
VAN BUSKIRK
605.361.8211
mike@vbclink.com

FLOORPLAN



605.361.8211 | VBCcommercial.com

2571 S Westlake Dr #100 Sioux Falls SD 57106

MIKE
VAN BUSKIRK
605.361.8211
mike@vbclink.com

AREA MAP

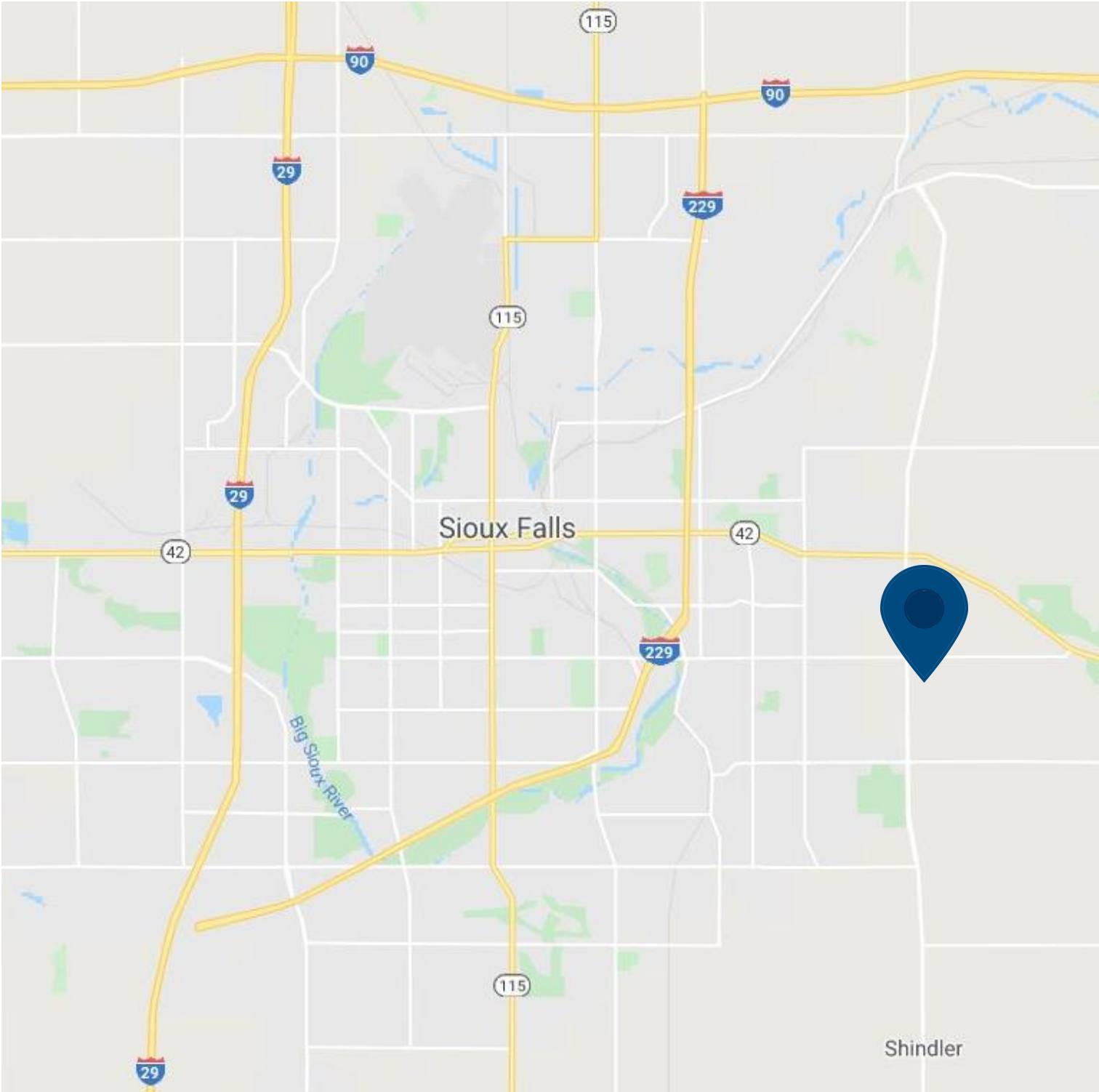


605.361.8211 | VBCcommercial.com

2571 S Westlake Dr #100 Sioux Falls SD 57106

MIKE
VAN BUSKIRK
605.361.8211
mike@vbclink.com

CITY LOCATION



605.361.8211 | VBCcommercial.com

2571 S Westlake Dr #100 Sioux Falls SD 57106

MIKE
VAN BUSKIRK
605.361.8211
mike@vbclink.com