

FOR LEASE

Howard County, Maryland

PARKWAY INDUSTRIAL CENTER

7257 PARKWAY DRIVE | HANOVER, MARYLAND, 21076

AVAILABLE

Suite 150: 8,459 sf (*direct lobby access; divisible*)

Suite 240: 1,105 sf

Suite 250: 1,523 sf

Suite 260: 1,401 sf

ZONING

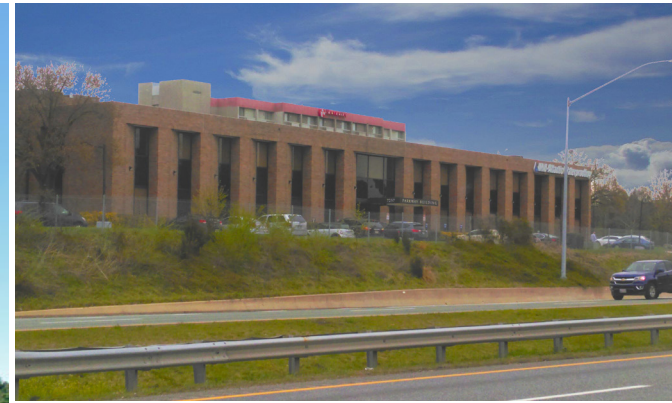
W1

PARKING RATIO

3.4/1,000

HIGHLIGHTS

- ▶ Excellent visibility from Route 100
- ▶ Building signage with visibility on Route 100 available for tenants over 4,000 sf
- ▶ LED lighting throughout
- ▶ Local landlord, professional management
- ▶ Plug and play
- ▶ Recent common area renovations

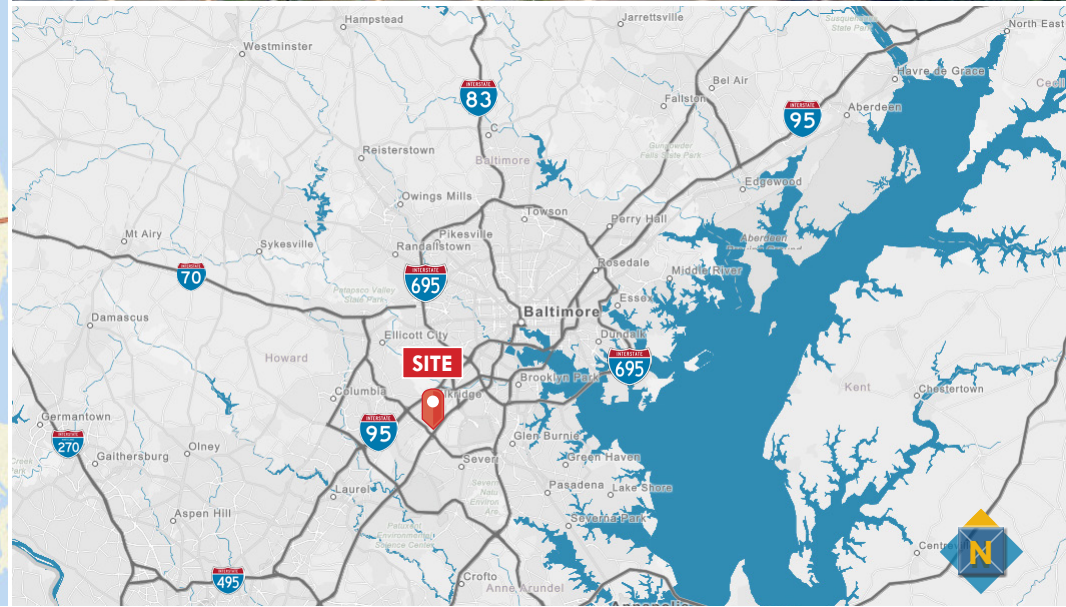
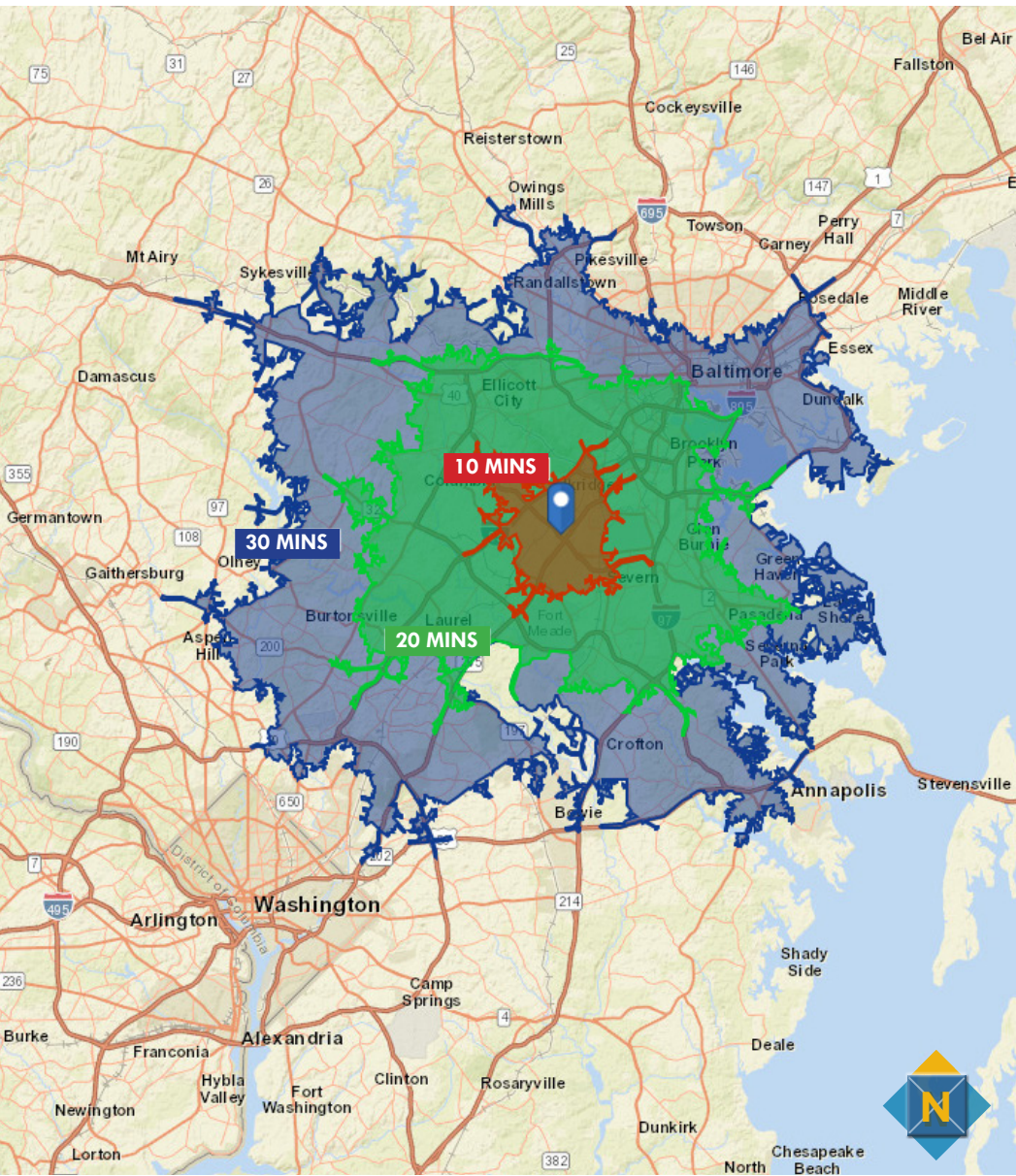


FOR LEASE

Howard County, Maryland

LOCATION

PARKWAY INDUSTRIAL CENTER | 7257 PARKWAY DRIVE | HANOVER, MARYLAND, 21076

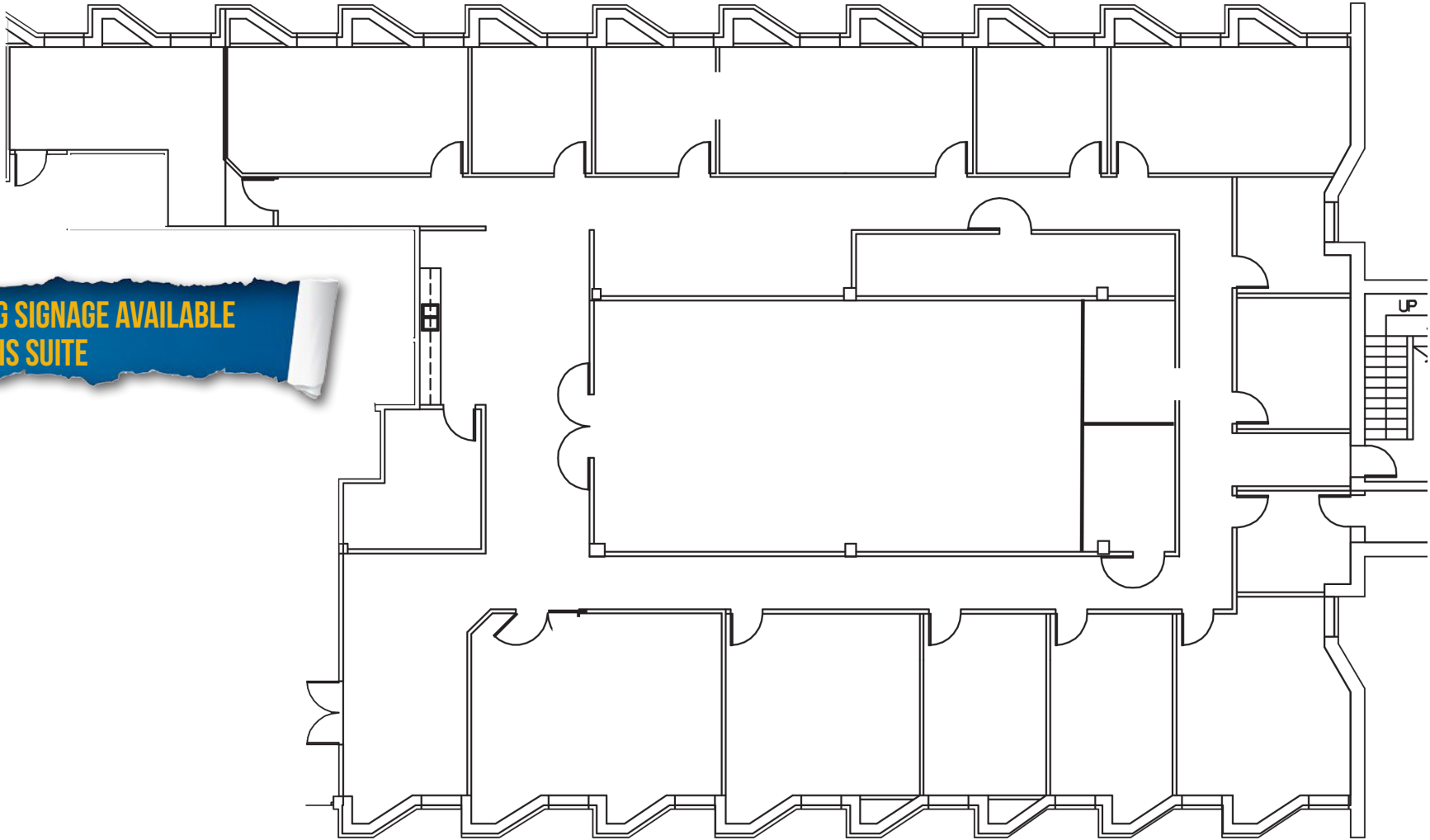


FOR LEASE

Howard County, Maryland

FLOOR PLAN

SUITE 150: 8,459 SF | 7257 PARKWAY DRIVE | HANOVER, MARYLAND, 21076



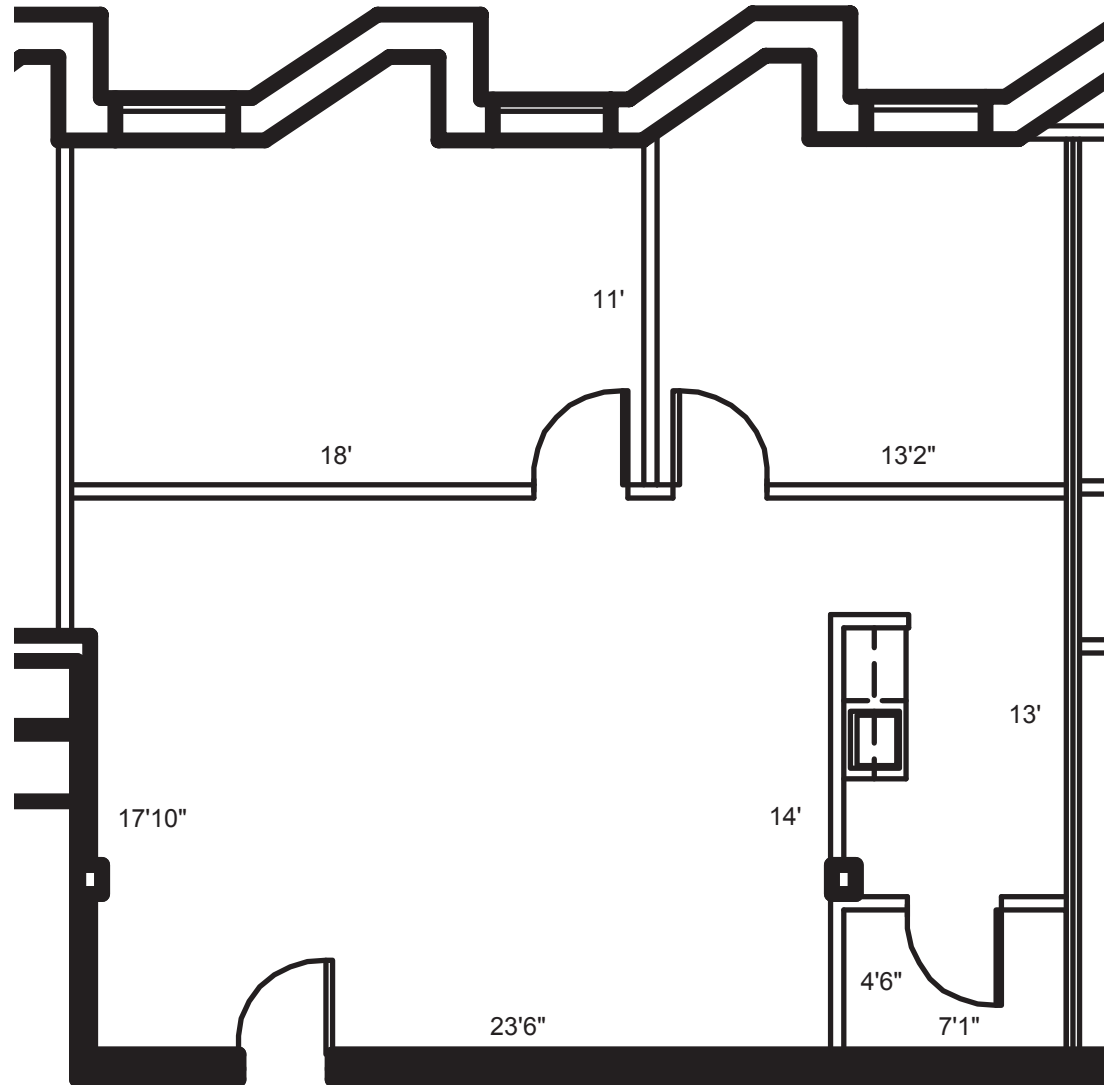
**BUILDING SIGNAGE AVAILABLE
WITH THIS SUITE**

FOR LEASE

Howard County, Maryland

FLOOR PLAN

SUITE 240: 1,105 SF | 7257 PARKWAY DRIVE | HANOVER, MARYLAND, 21076

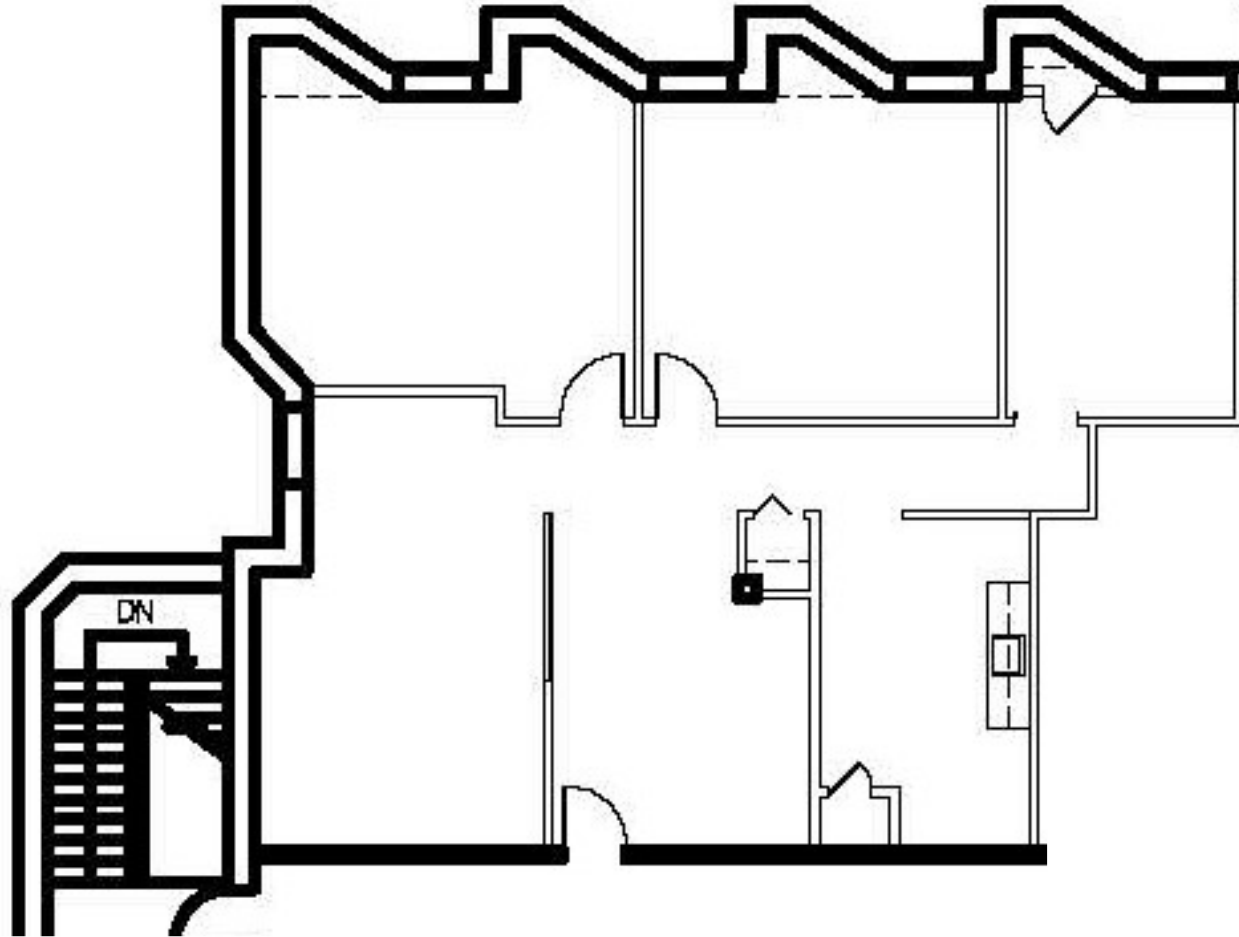


FOR LEASE

Howard County, Maryland

FLOOR PLAN

SUITE 250: 1,523 SF | 7257 PARKWAY DRIVE | HANOVER, MARYLAND, 21076



FOR LEASE

Howard County, Maryland

FLOOR PLAN

SUITE 260: 1,401 SF | 7257 PARKWAY DRIVE | HANOVER, MARYLAND, 21076

