

FOR LEASE

Howard County, Maryland

T.A.P.O BUILDING

6851 OAK HALL LANE | COLUMBIA, MARYLAND 21045

AVAILABLE

Suite 118: 557 sf
Suite 203: 3,297 sf (divisible)
Suite 205: 1,514 sf (2/1/2021)
Suite 300: 4,921 sf
Suite 302: 1,551 sf

RENTAL RATE

\$21.00/sf Full Service

PARKING RATIO

200 spaces, 4.5/1,000 sf

HIGHLIGHTS

- ▶ MERV 13 HVAC filters, touch-free rest room doors and fixtures, push button lobby door entry
- ▶ Highly visible and accessible location proximate to I-95, 32 and 175
- ▶ Newly renovated lobby, rest rooms and common areas
- ▶ Plug and play office build outs
- ▶ Professionally managed
- ▶ Surrounded by amenities including restaurants, shopping, post office and Wegman's

REDUCED RENTAL RATE!



FOR LEASE

Howard County, Maryland

INTERIOR PHOTOS

T.A.P.O BUILDING | 6851 OAK HALL LANE | COLUMBIA, MARYLAND 21045



FOR LEASE

Howard County, Maryland

LOCATION

T.A.P.O BUILDING | 6851 OAK HALL LANE | COLUMBIA, MARYLAND 21045

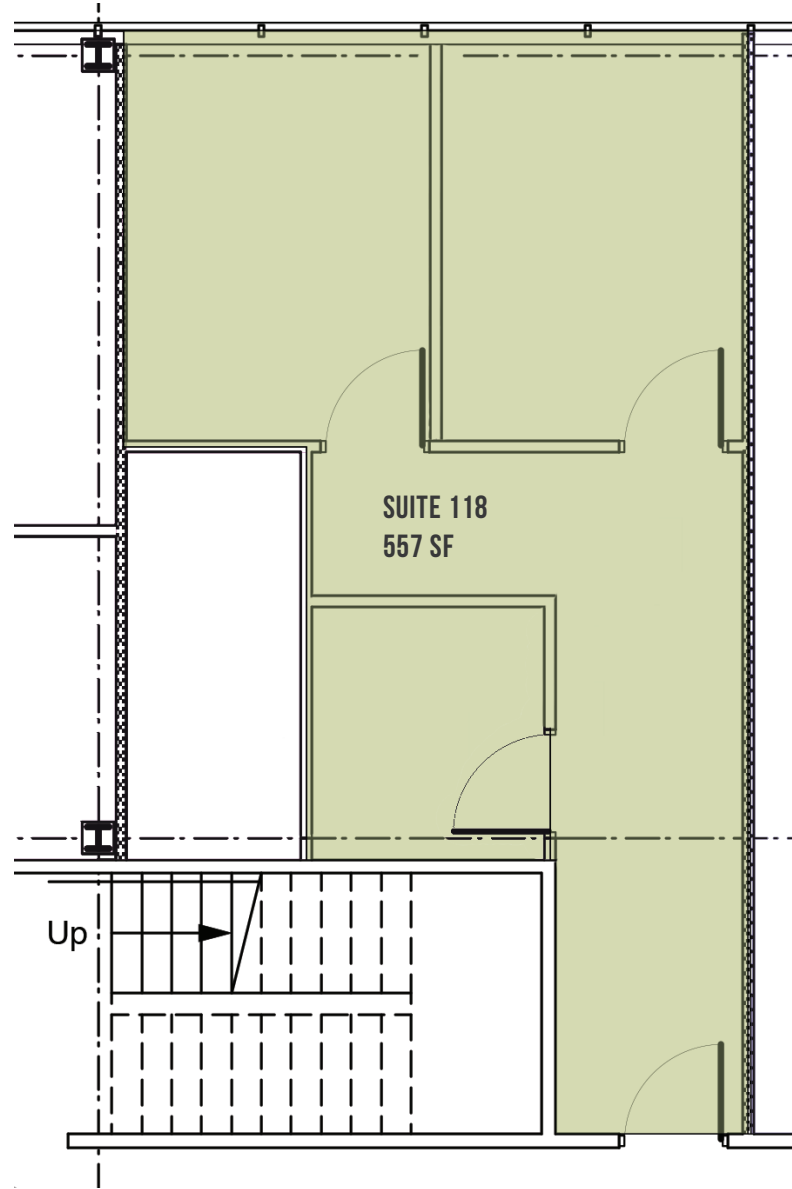


FOR LEASE

Howard County, Maryland

SUITE 118

T.A.P.O BUILDING | 6851 OAK HALL LANE | COLUMBIA, MARYLAND 21045

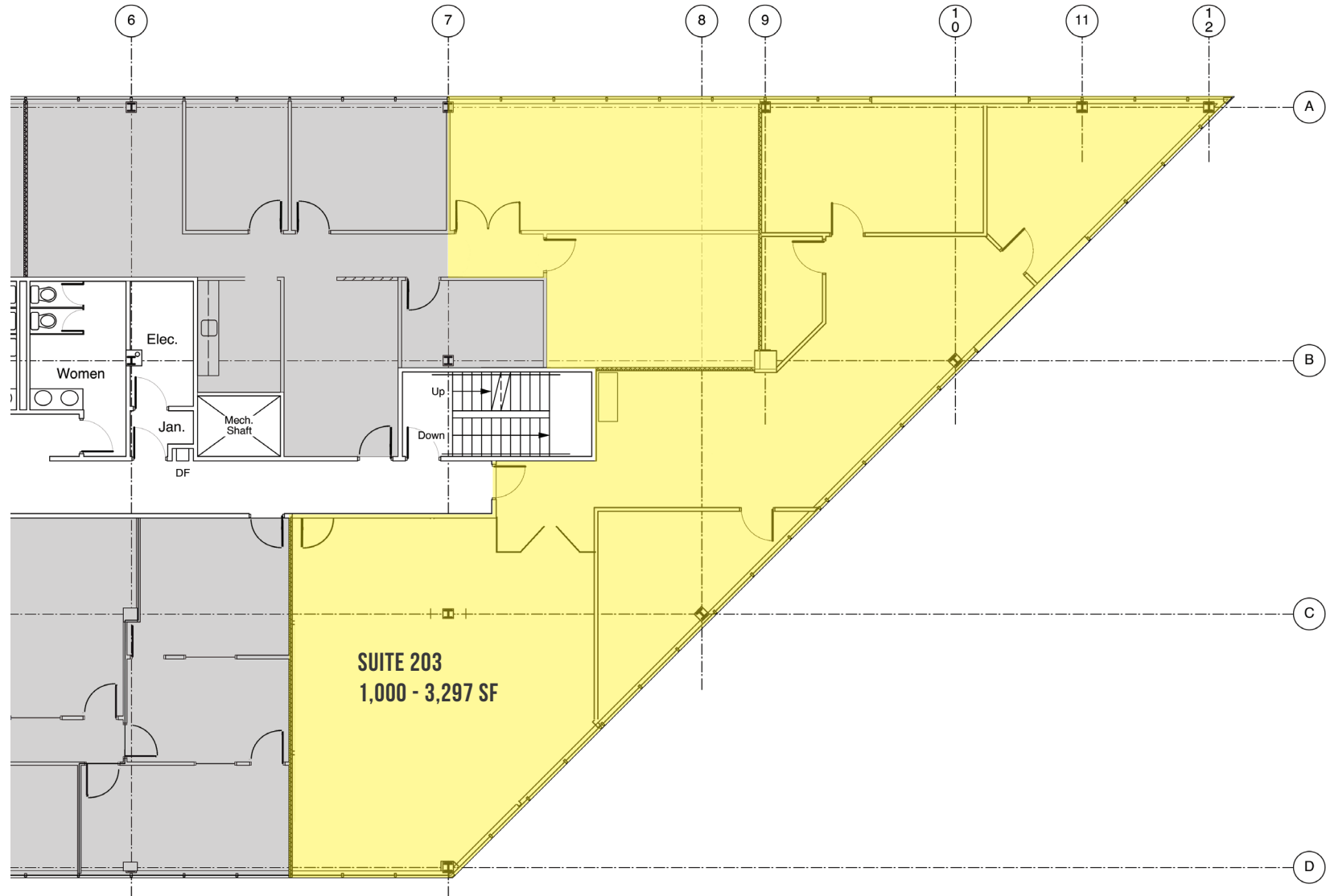


FOR LEASE

Howard County, Maryland

SUITE 203

T.A.P.O BUILDING | 6851 OAK HALL LANE | COLUMBIA, MARYLAND 21045

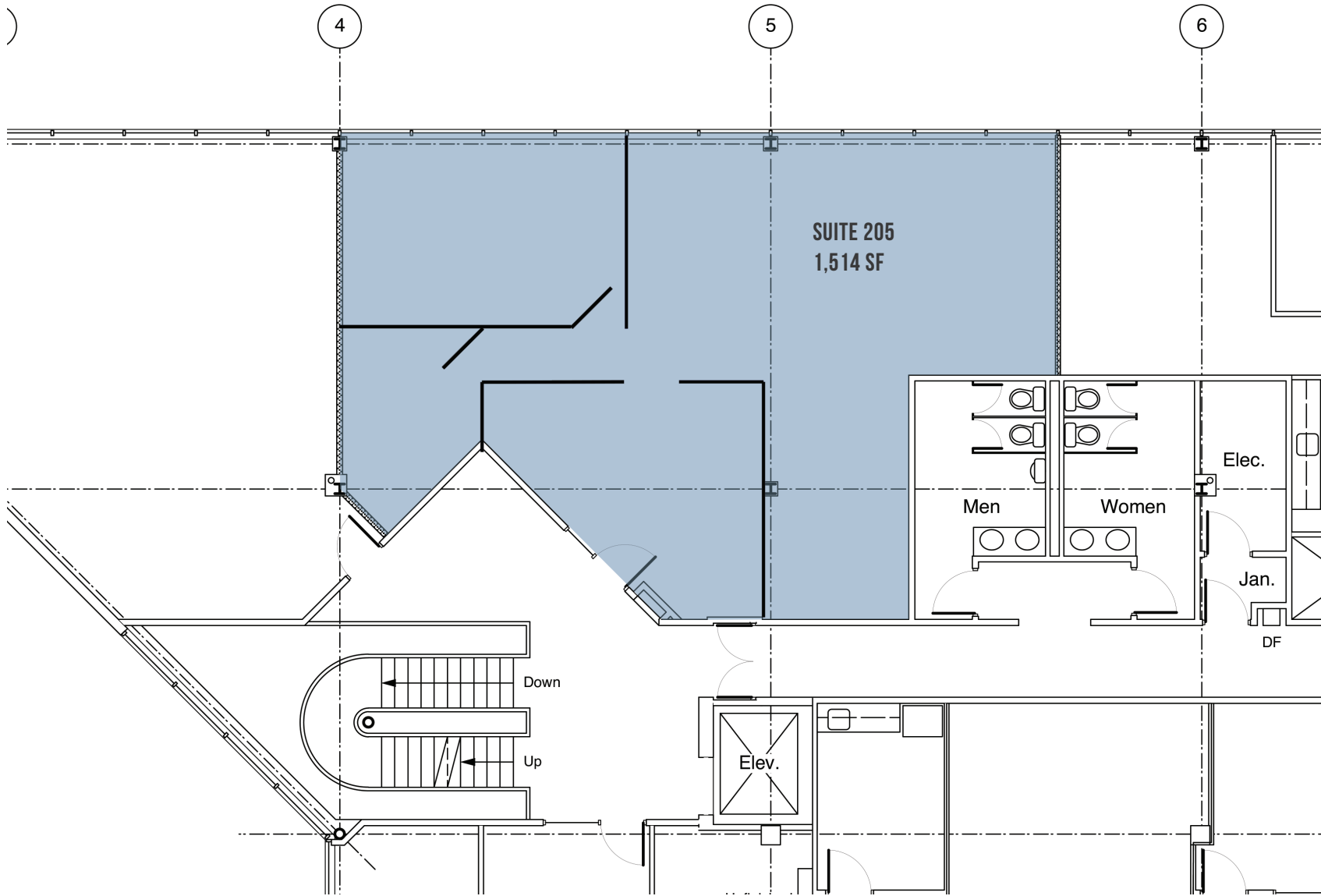


FOR LEASE

Howard County, Maryland

SUITE 205

T.A.P.O BUILDING | 6851 OAK HALL LANE | COLUMBIA, MARYLAND 21045

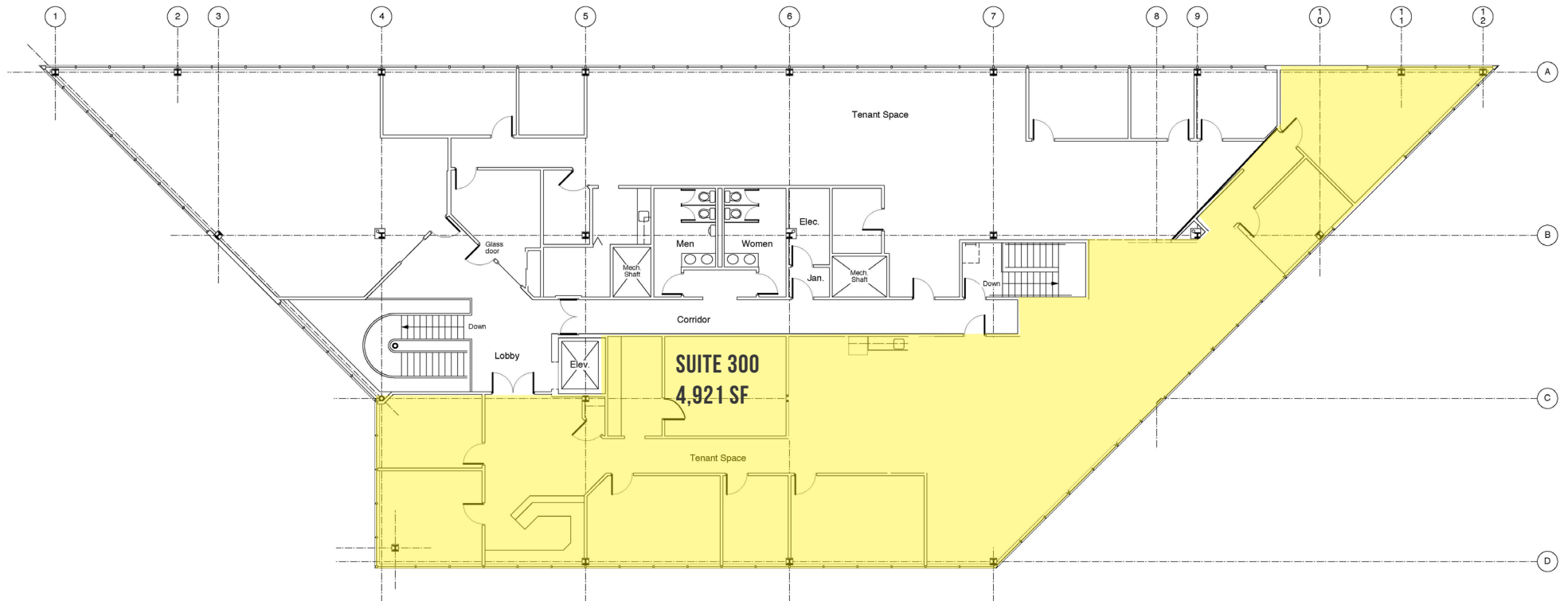


FOR LEASE

Howard County, Maryland

SUITES 300

T.A.P.O BUILDING | 6851 OAK HALL LANE | COLUMBIA, MARYLAND 21045



FOR LEASE

Howard County, Maryland

SUITES 302

T.A.P.O BUILDING | 6851 OAK HALL LANE | COLUMBIA, MARYLAND 21045

