

FOR SALE

Baltimore County, MD

2606 WILLOW AVENUE

HALETHORPE, MARYLAND 21227

BUILDING SIZE

- 6108 sf ± total
- 3,900 sf ± office space
- 2,200 sf ± warehouse space

SITE SIZE

.90 ± acres

ZONING

ML-IM

SALE PRICE

Negotiable

HIGHLIGHTS

- ▶ Gas heat
- ▶ Fenced outside storage yard
- ▶ Freestanding facility
- ▶ Conveniently located near Washington Blvd, I-695 & I-95



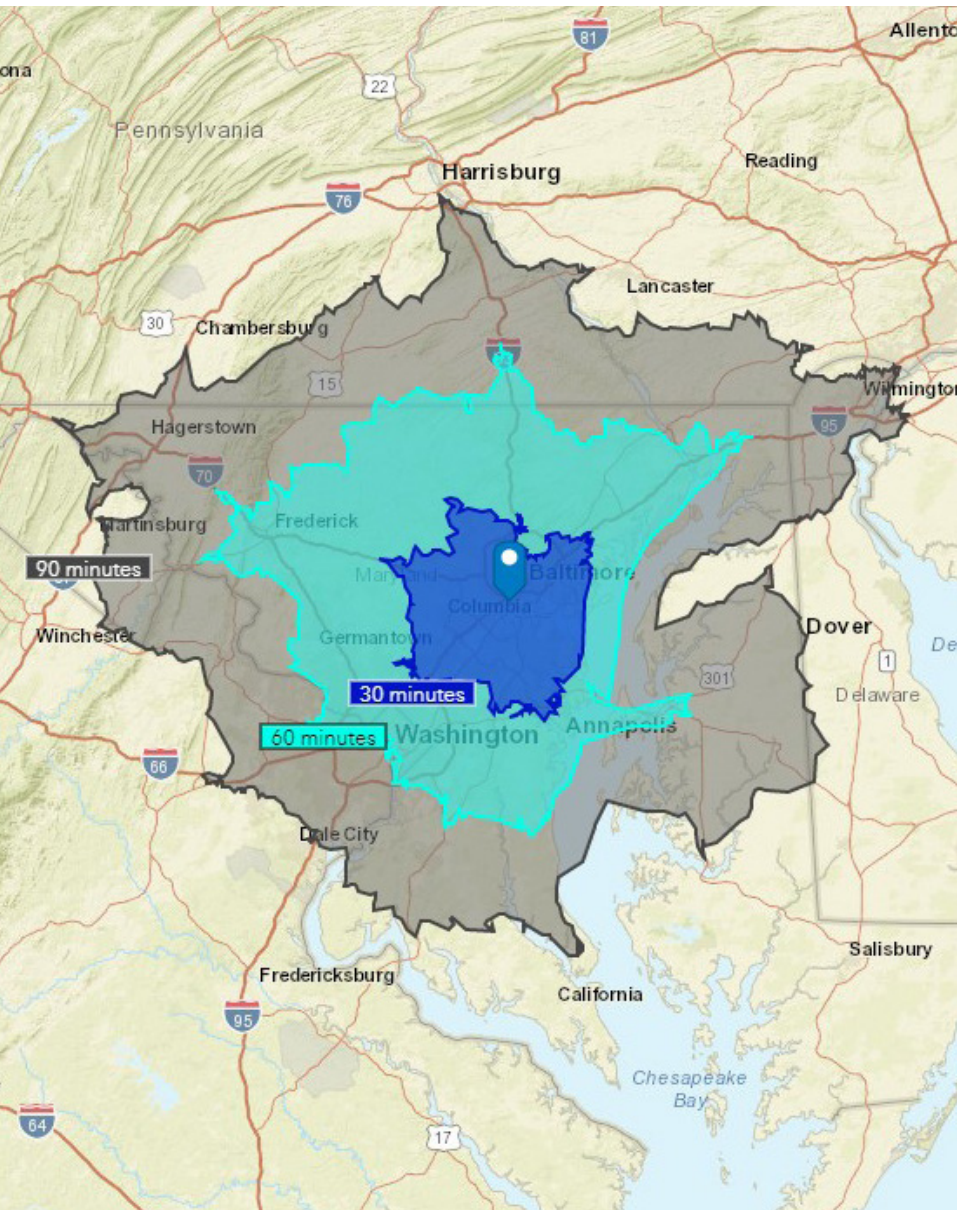
FOR SALE



Baltimore County, MD

LOCATION

2606 WILLOW AVENUE | HALETHORPE, MARYLAND 21227



Andrew Meeder | Vice President

☎ 410.494.4881 ✉ ameeder@mackenziecommercial.com

Dan Hudak, SIOR | Senior Vice President/Principal

☎ 443.573.3205 ✉ dhudak@mackenziecommercial.com

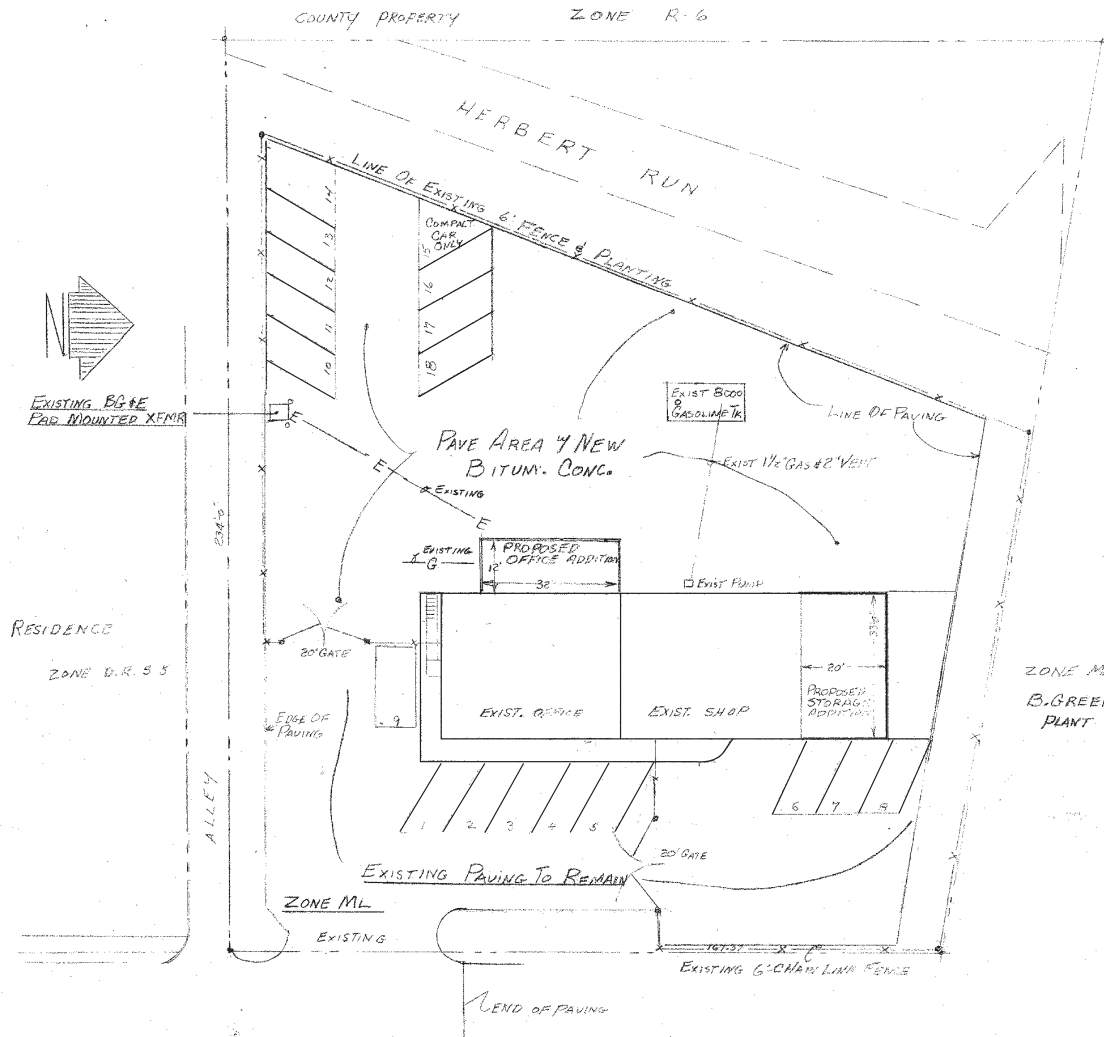
No warranty or representation, expressed or implied, is made as to the accuracy of the information contained herein, and same is submitted subject to errors, omissions, change of price, rental or other conditions, withdrawal without notice, and to any specific listing conditions imposed by our principals.

FOR SALE

Baltimore County, MD

SITE PLAN

2606 WILLOW AVENUE | HALETHORPE, MARYLAND 21227



FOR SALE

Baltimore County, MD

BUILDING PLAN

2606 WILLOW AVENUE | HALETHORPE, MARYLAND 21227

