



## 5520 N. Bryant Avenue

Oklahoma City, Oklahoma 73121

### PROPERTY HIGHLIGHTS

- 21 Acres MOL of Development Land
- Ideal Location for Distribution with Access to I-44 & I-35
- Excellent Visibility



TOTAL ACRES	21 Acres
ZONED	I-2

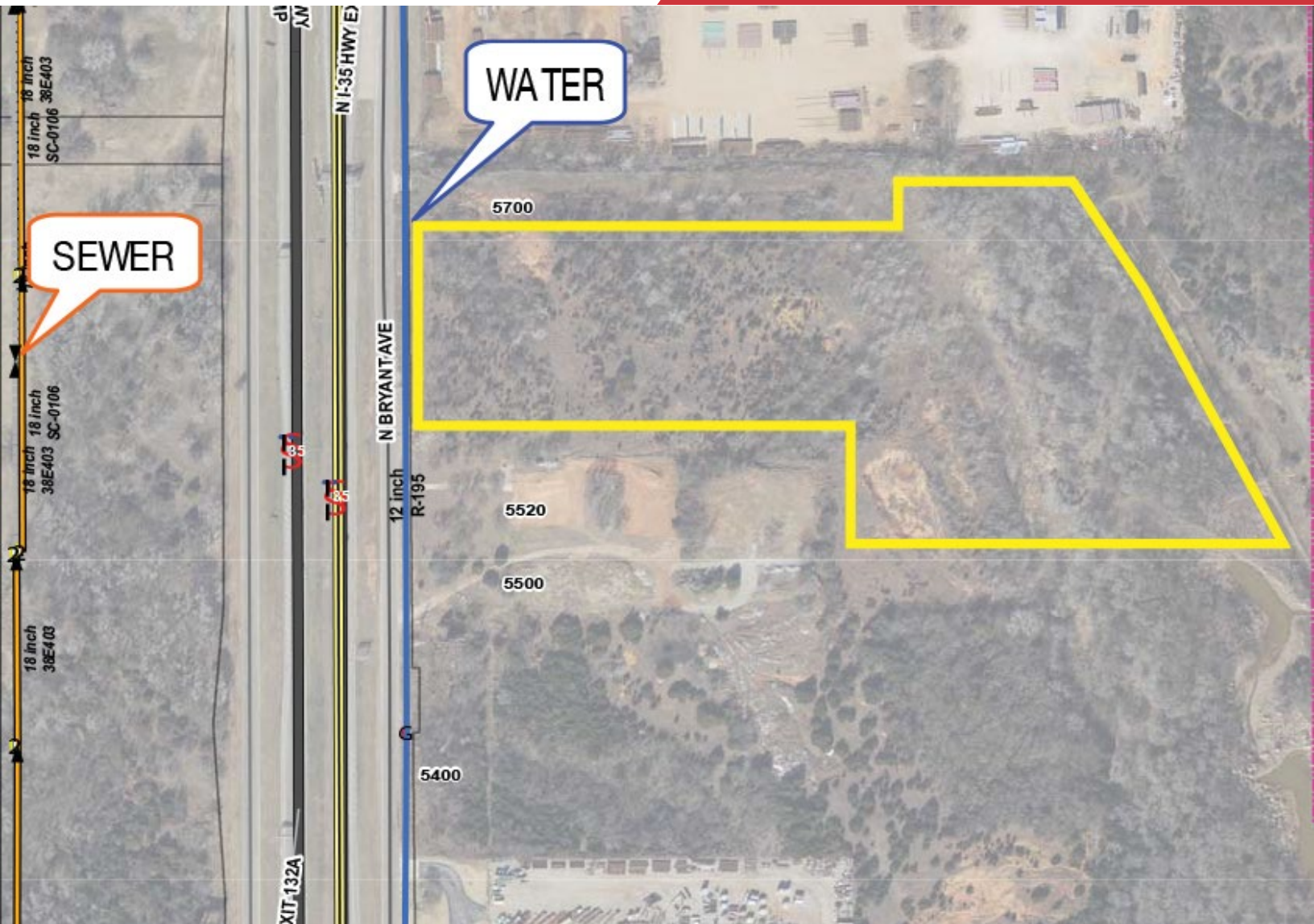
NO WARRANTY OR REPRESENTATION, EXPRESS OR IMPLIED, IS MADE AS TO THE ACCURACY OF THE INFORMATION CONTAINED HEREIN, AND THE SAME IS SUBMITTED SUBJECT TO ERRORS, OMISSIONS, CHANGE OF PRICE, RENTAL OR OTHER CONDITIONS, PRIOR SALE, LEASE OR FINANCING, OR WITHDRAWAL WITHOUT NOTICE, AND OF ANY SPECIAL LISTING CONDITIONS IMPOSED BY OUR PRINCIPALS. NO WARRANTIES OR REPRESENTATIONS ARE MADE AS TO THE CONDITION OF THE PROPERTY OR ANY HAZARDS CONTAINED THEREIN ARE ANY TO BE IMPLIED.

**Irmon Gray**  
+1 405 474 7286  
irmon@naisullivangroup.com

4045 N.W. 64<sup>th</sup> Street, Suite 340  
Oklahoma City, OK 73116  
[www.naisullivangroup.com](http://www.naisullivangroup.com)

+1 405 840 0600 OFFICE  
+1 405 840 0610 FAX





## LOCATION HIGHLIGHTS

- Across I-35 from Remington Park & the OKC Zoo
- Established Industrial Location
- Next to International Pipe Yard

Population	1 Mile: 835	3 Miles: 22,096	5 Miles: 99,236
Average Household Income	1 Mile: \$81,356	3 Miles: \$30,911	5 Miles: \$43,300
Total Households	1 Mile: 361	3 Miles: 9,415	5 Miles: 44,560

NO WARRANTY OR REPRESENTATION, EXPRESS OR IMPLIED, IS MADE AS TO THE ACCURACY OF THE INFORMATION CONTAINED HEREIN, AND THE SAME IS SUBMITTED SUBJECT TO ERRORS, OMISSIONS, CHANGE OF PRICE, RENTAL OR OTHER CONDITIONS, PRIOR SALE, LEASE OR FINANCING, OR WITHDRAWAL WITHOUT NOTICE, AND OF ANY SPECIAL LISTING CONDITIONS IMPOSED BY OUR PRINCIPALS. NO WARRANTIES OR REPRESENTATIONS ARE MADE AS TO THE CONDITION OF THE PROPERTY OR ANY HAZARDS CONTAINED THEREIN ARE ANY TO BE IMPLIED.

**Irmon Gray**  
+1 405 474 7286  
[irmon@naisullivangroup.com](mailto:irmon@naisullivangroup.com)

4045 N.W. 64<sup>th</sup> Street, Suite 340  
Oklahoma City, OK 73116  
[www.naisullivangroup.com](http://www.naisullivangroup.com)

**+1 405 840 0600 OFFICE**  
**+1 405 840 0610 FAX**