

2002 MISSOURI AVENUE

Omaha, Nebraska 68107

Retail For Sale / \$225,000



Dylan McCabe / Associate / dylan.mccabe@lundco.com / +1 402 548 4075
Justin Riviera / Senior Associate / justin.riviera@lundco.com / +1 402 548 4064

WE ARE
THE CENTER
OF RETAIL

LUNDCO.COM

Cushman & Wakefield Copyright 2020. No warranty or representation, express or implied, is made to the accuracy or completeness of the information contained herein, and same is submitted subject to errors, omissions, change of price, rental or other conditions, withdrawal without notice, and to any special listing conditions imposed by the property owner(s). As applicable, we make no representation as to the condition of the property (or properties) in question.



LUND
COMPANY

PROPERTY OVERVIEW




Free standing building with two vacant lots sitting on roughly 0.4 acres. Great redevelopment hard corner at the fully lit intersection on the NW corner of 20th and Missouri Avenue. Near Omaha South High School and 24th Street retail.

HIGHLIGHTS

Sale Price	\$225,000
Building Size	1,046 SF
Year Built	1937
Total Site Area	0.4 AC
Zoning	GC & R7
Traffic Count	13,088 EADT

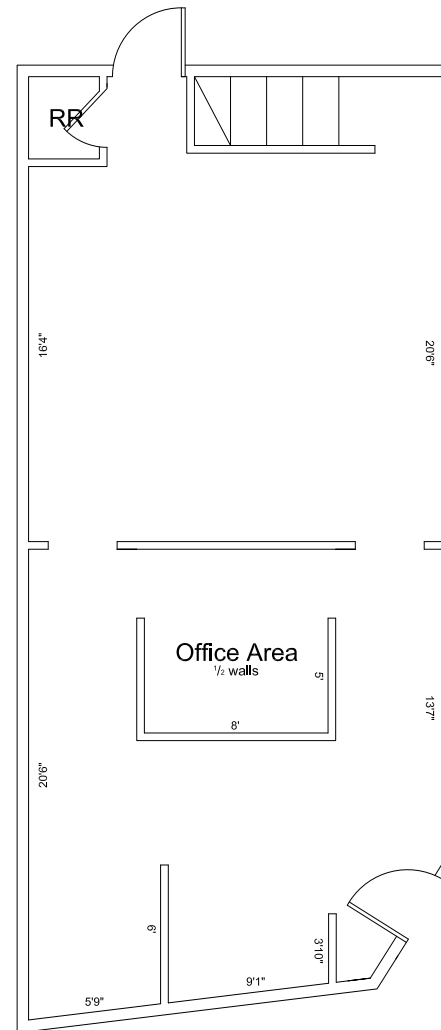


NEIGHBORHOOD DEMOGRAPHICS

	 POPULATION	 MEDIAN HOUSEHOLD INCOME	 NUMBER OF HOUSEHOLDS
1 Mile	13,703	\$42,571	4,041
3 Miles	100,631	\$48,504	34,993
5 Miles	227,322	\$51,383	87,171

Retail For Sale / \$225,000

FLOOR PLAN





2002 MISSOURI AVENUE

Omaha, Nebraska 68107

Retail For Sale / \$225,000



Dylan McCabe / Associate / dylan.mccabe@lundco.com / +1 402 548 4075
Justin Riviera / Senior Associate / justin.riviera@lundco.com / +1 402 548 4064

450 Regency Parkway, Suite 200
Omaha, NE 68114
+1 402 393 8811
lundco.com