

**LEASE**

# The Vineyard

**425 N WHISMAN ROAD, SUITE 500**

Mountain View, CA 94043

**PRESENTED BY:**

**PAUL MELNYK**

O: 408.827.4300

CalDRE #01270795

paul.melnyk@svn.com

## PROPERTY SUMMARY



## OFFERING SUMMARY

<b>LEASE RATE:</b>	\$3.85 SF/month (MG)
<b>BUILDING SIZE:</b>	14,592 SF
<b>AVAILABLE SF:</b>	2,131 SF
<b>LOT SIZE:</b>	0.984 Acres
<b>YEAR BUILT:</b>	2006
<b>ZONING:</b>	Limited Industrial (ML)
<b>MARKET:</b>	Mountain View

## PROPERTY OVERVIEW

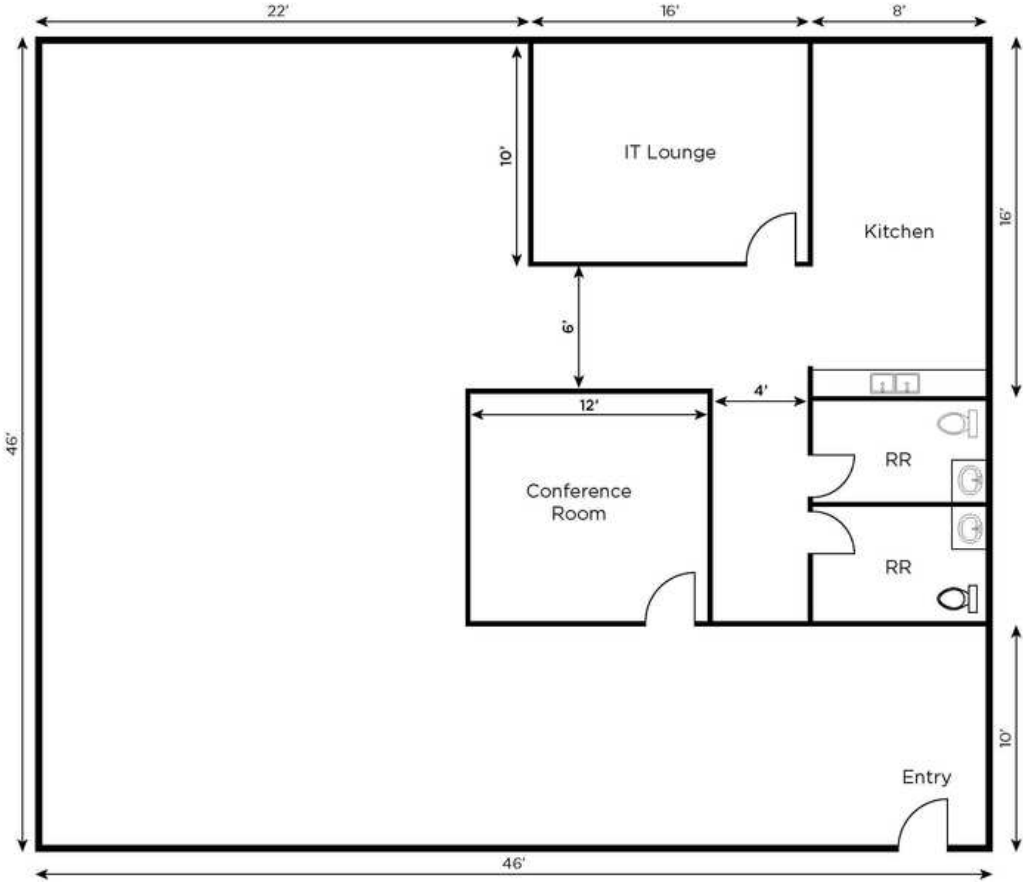
This commercial condominium campus features 38 separate office suites in eight single-story buildings in a bucolic, vineyard setting. Completed in 2006, occupants include attorneys, accountants, professional associations, architects, software companies, insurance agents, real estate investors, and other professionals.

## PROPERTY HIGHLIGHTS

- Open office, Conference room, Kitchenette & Restrooms
- Furniture available
- Whiteboard paint
- On-site restaurant
- Street-frontage corner unit
- Short walk to Middlefield Light Rail

**PAUL MELNYK**  
O: 408.827.4300  
paul.melnyk@svn.com  
CalDRE #01270795

**FLOOR PLANS**

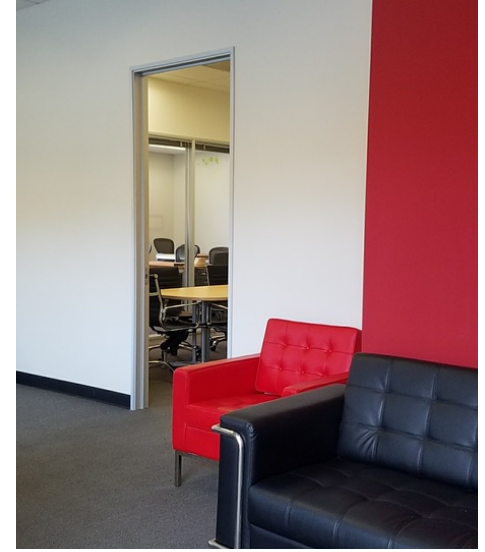


\*Measurements are estimates and not to scale.

**425 N Whisman Rd, Suite 500  
Mountain View, California**

**PAUL MELNYK**  
O: 408.827.4300  
paul.melnyk@svn.com  
CalDRE #01270795

## ADDITIONAL PHOTOS



**PAUL MELNYK**  
O: 408.827.4300  
paul.melnyk@svn.com  
CalDRE #01270795

# LOCATION MAP



**PAUL MELNYK**  
O: 408.827.4300  
paul.melnyk@svn.com  
CalDRE #01270795

**SITE PLANS**



**PAUL MELNYK**  
 O: 408.827.4300  
 paul.melnyk@svn.com  
 CalDRE #01270795