

1150 Pershall Road St. Louis, MO 63137

1150 PERSHALL ROAD, SAINT LOUIS, MO 63137

FOR SALE

Listing Price \$540,000



Features

- Heated Warehouse with Skylights
- 1 Drive-in & 1 Dock Door
- 1,000 SF Conditioned Office with Bathroom
- Side Trailer Parking Lot
- 400 AMP Service/ 3 Phase Available
- Floor Drains - Shop Bathroom

Property Information

- 13,800 SF Steel Industrial Building
- For Lease \$5,000 a month Gross
- Price/SF: \$36.16
- Faces I-270 with Direct Access to Exit 33
- Next to QuikTrip on Lilac Ave



www.SperryCGA.com



Stephen Jacquemin, CCIM, SIOR

MANAGING DIRECTOR

636.227.7900 x202

stephen.jacquemin@sperrycga.com

MO #1999020963

Each office independently owned and operated.

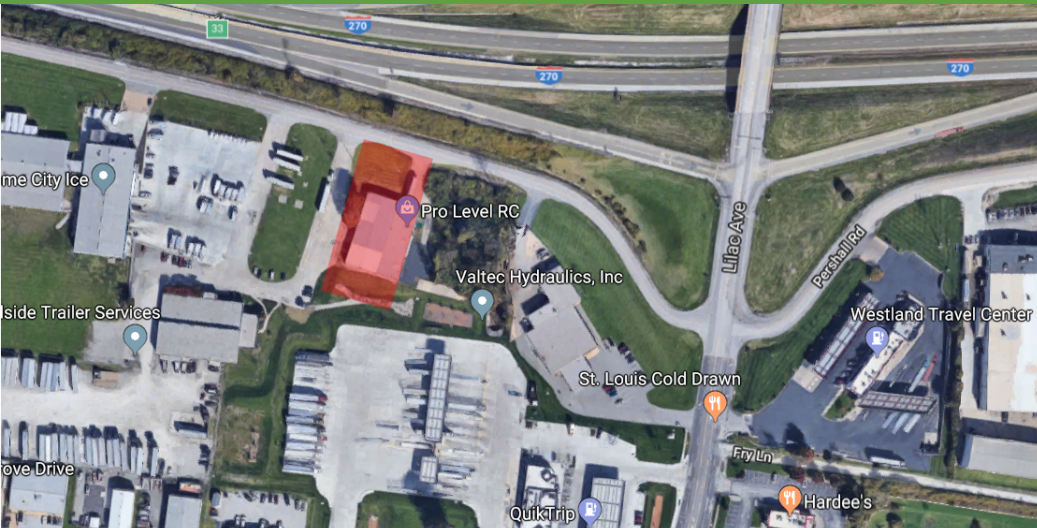
We obtained the information above from sources we believe to be reliable. However, we have not verified its accuracy and make no guarantee, warranty or representation about it. It is submitted subject to the possibility of errors, omissions, change of price, rental or other conditions, prior sale, lease or financing, or withdrawal without notice. We include projections, opinions, assumptions or estimates for example only, and they may not represent current or future performance of the property. You and your tax and legal advisors should conduct your own investigation of the property and transaction.

1150 Pershall Road St. Louis, MO 63137

1150 PERSHALL ROAD, SAINT LOUIS, MO 63137

FOR SALE

Listing Price \$540,000



www.SperryCGA.com

Stephen Jacquemin, CCIM, SIOR

MANAGING DIRECTOR

636.227.7900 x202

stephen.jacquemin@sperrycga.com

MO #1999020963

Each office independently owned and operated.

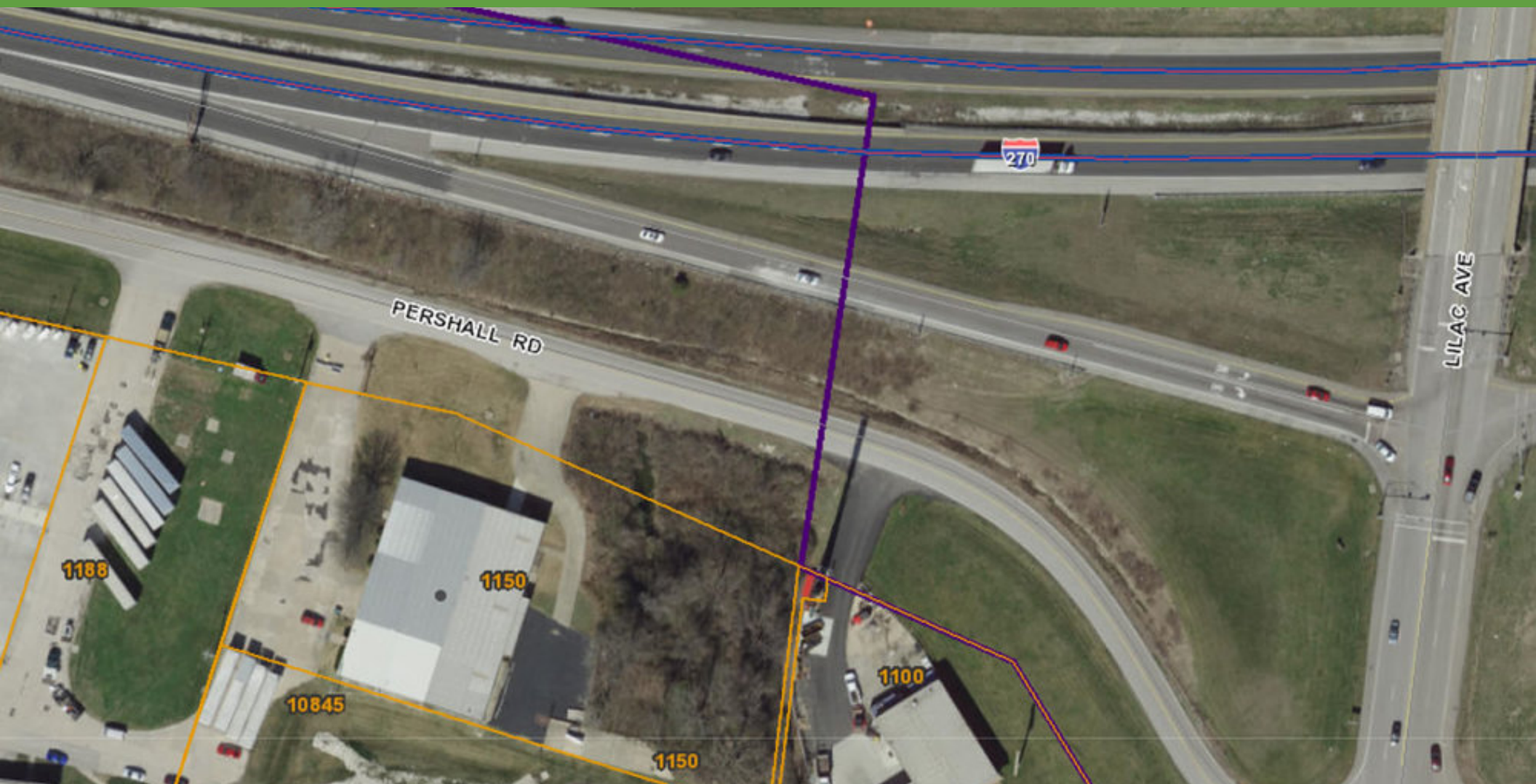
We obtained the information above from sources we believe to be reliable. However, we have not verified its accuracy and make no guarantee, warranty or representation about it. It is submitted subject to the possibility of errors, omissions, change of price, rental or other conditions, prior sale, lease or financing, or withdrawal without notice. We include projections, opinions, assumptions or estimates for example only, and they may not represent current or future performance of the property. You and your tax and legal advisors should conduct your own investigation of the property and transaction.

1150 Pershall Road St. Louis, MO 63137

1150 PERSHALL ROAD, SAINT LOUIS, MO 63137

FOR SALE

Listing Price \$540,000



www.SperryCGA.com

Stephen Jacquemin, CCIM, SIOR

MANAGING DIRECTOR

636.227.7900 x202

stephen.jacquemin@sperrycga.com

MO #1999020963

Each office independently owned and operated.

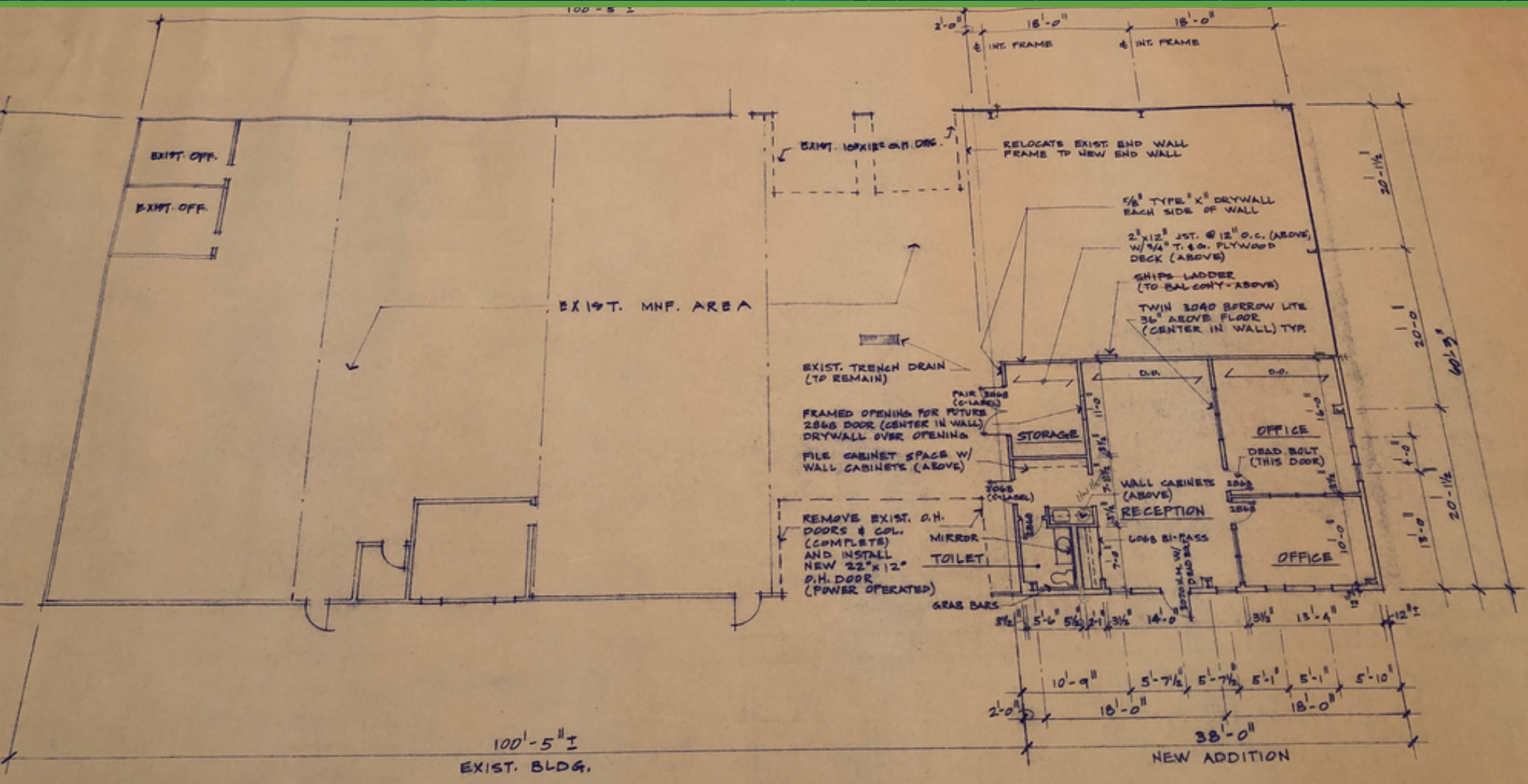
We obtained the information above from sources we believe to be reliable. However, we have not verified its accuracy and make no guarantee, warranty or representation about it. It is submitted subject to the possibility of errors, omissions, change of price, rental or other conditions, prior sale, lease or financing, or withdrawal without notice. We include projections, opinions, assumptions or estimates for example only, and they may not represent current or future performance of the property. You and your tax and legal advisors should conduct your own investigation of the property and transaction.

1150 Pershall Road St. Louis, MO 63137

1150 PERSHALL ROAD, SAINT LOUIS, MO 63137

FOR SALE

Listing Price \$540,000



Stephen Jacquemin, CCIM, SIOR

MANAGING DIRECTOR

636.227.7900 x202

stephen.jacquemin@sperrycga.com

MO #1999020963

Each office independently owned and operated.

We obtained the information above from sources we believe to be reliable. However, we have not verified its accuracy and make no guarantee, warranty or representation about it. It is submitted subject to the possibility of errors, omissions, change of price, rental or other conditions, prior sale, lease or financing, or withdrawal without notice. We include projections, opinions, assumptions or estimates for example only, and they may not represent current or future performance of the property. You and your tax and legal advisors should conduct your own investigation of the property and transaction.

www.SperryCGA.com