

Multiple Industrial Lots Near Local Airport

801 SEVILLE RD., WADSWORTH, OH 44281

FOR SALE

\$595,000
Land



PROPERTY FEATURES

- 12.23 acres adjacent to Wadsworth Municipal Airport
- Zoned I-2 Heavy Industrial
- 749' of frontage along Seville Rd. and 604' exposure along State Rt. 57. Hard corner with light and high visibility (12,500+ cars per day)
- Best Use: Retail, Agriculture, Industrial, Office, Recreational
- Closest Highway: 1.8 miles south of I-76 and SR-57 interchange with easy access to I-77, I-71, Columbus, Akron, Canton, Cleveland, Medina, Rittman, Orrville, the Ohio Turnpike, and two regional airports
- Future roundabout planned to increase the flow of traffic, providing easier access to the parcel



Property is offered at \$595,000 for the full 12.23 acres

OR Individual Lots Available:

Lot 1 - 2.2 AC corner lot - \$350,000

Lot 2 - 2.47 AC - \$175,000

Lot 3 - 7.56 AC - \$380,000



Steve Masica

PRINCIPAL
330.714.4415
steve.masica@sperrycga.com
OH #2013002150

Sarah Combs

PRINCIPAL
216.293.8900
sarah.combs@sperrycga.com
OH #2017004624

Michelle Masica

PRINCIPAL/BROKER
330.590.7401
michelle.masica@sperrycga.com
OH #2019006823

Each office independently owned and operated.

We obtained the information above from sources we believe to be reliable. However, we have not verified its accuracy and make no guarantee, warranty or representation about it. It is submitted subject to the possibility of errors, omissions, change of price, rental or other conditions, prior sale, lease or financing, or withdrawal without notice. We include projections, opinions, assumptions or estimates for example only, and they may not represent current or future performance of the property. You and your tax and legal advisors should conduct your own investigation of the property and transaction.

www.SperryCGA.com

Corner Industrial Lot Next to Local Airport

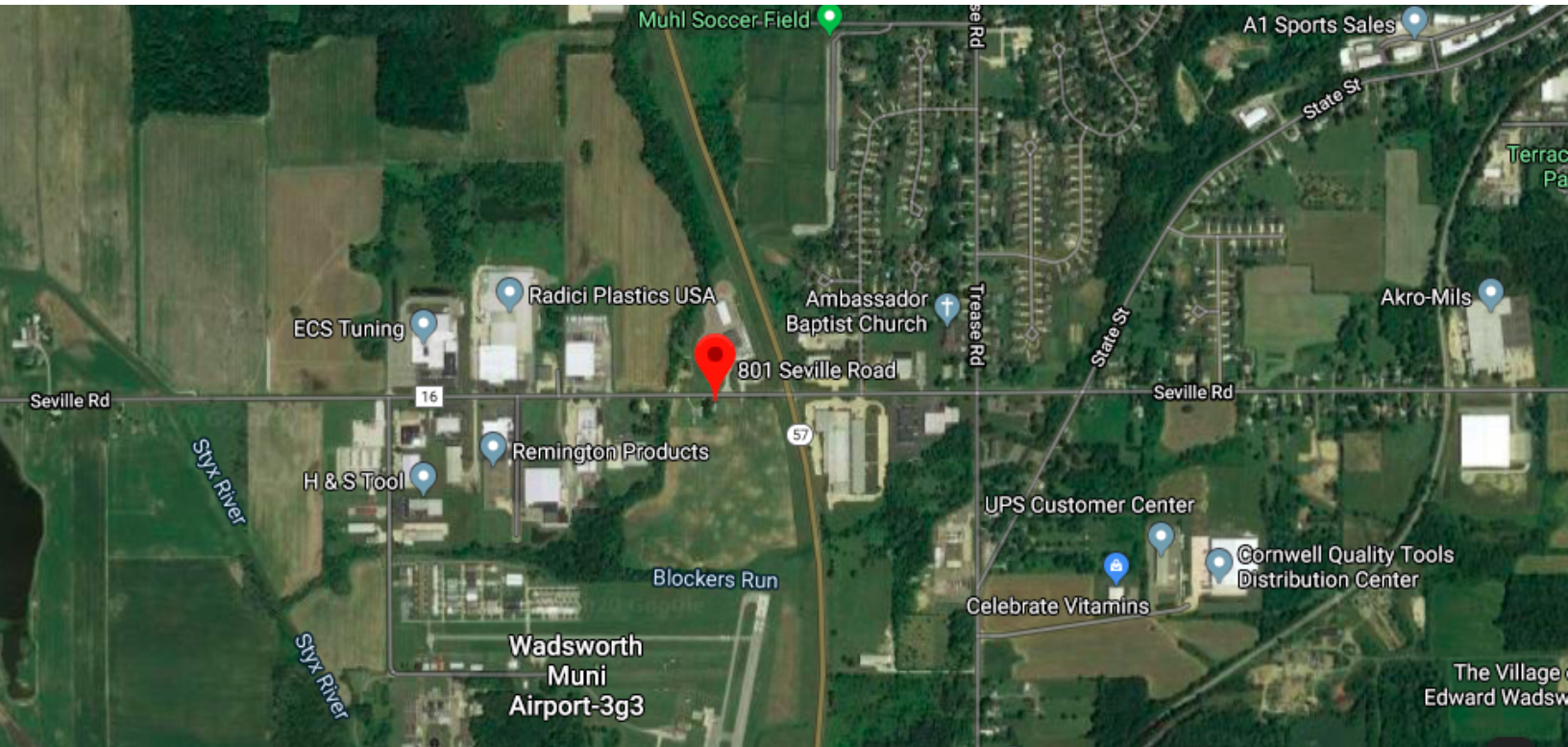
FOR SALE

801 SEVILLE RD., WADSWORTH, OH 44281

Land



Imagery ©2021 Maxar Technologies, State of Ohio / OSIP, U.S. Geological Survey, USDA Farm Service Agency



Steve Masica
 PRINCIPAL
 330.714.4415
 steve.masica@sperrycga.com
 OH #2013002150

Sarah Combs
 PRINCIPAL
 216.293.8900
 sarah.combs@sperrycga.com
 OH #2017004624

Michelle Masica
 PRINCIPAL/BROKER
 330.590.7401
 michelle.masica@sperrycga.com
 OH #2019006823

Each office independently owned and operated.

We obtained the information above from sources we believe to be reliable. However, we have not verified its accuracy and make no guarantee, warranty or representation about it. It is submitted subject to the possibility of errors, omissions, change of price, rental or other conditions, prior sale, lease or financing, or withdrawal without notice. We include projections, opinions, assumptions or estimates for example only, and they may not represent current or future performance of the property. You and your tax and legal advisors should conduct your own investigation of the property and transaction.

www.SperryCGA.com

PROPOSED ROUNDABOUT

801 SEVILLE RD., WADSWORTH, OH 44281



PROPOSED ROUNDABOUT - COMPLETION 2022

The engineering design process has begun for this roundabout at SR 57 and Seville Road. This ODOT funded project will occur in the next couple of years and will provide safety and traffic improvements to this busy area.



www.SperryCGA.com

Steve Masica
PRINCIPAL
330.714.4415
steve.masica@sperrycga.com
OH #2013002150

Sarah Combs
PRINCIPAL
216.293.8900
sarah.combs@sperrycga.com
OH #2017004624

Michelle Masica
PRINCIPAL/BROKER
330.590.7401
michelle.masica@sperrycga.com
OH #2019006823

Each office independently owned and operated.

We obtained the information above from sources we believe to be reliable. However, we have not verified its accuracy and make no guarantee, warranty or representation about it. It is submitted subject to the possibility of errors, omissions, change of price, rental or other conditions, prior sale, lease or financing, or withdrawal without notice. We include projections, opinions, assumptions or estimates for example only, and they may not represent current or future performance of the property. You and your tax and legal advisors should conduct your own investigation of the property and transaction.