

542 Rand RD
MCHENRY, IL 60050

FOR SALE

Listing Price \$398,000



PROPERTY FEATURES

- Great Development Site
- 1.9 Acres
- High Visibility
- Office with Shop
- Existing House
- Property Tax: \$7,545.32



www.SperryCGA.com

Wayne Kurchina, CCIM, CIPS

MANAGING BROKER/OWNER

815.344.8900

wayne.kurchina@sperrycga.com

IL #471.000538 | WI #56313-090

Each office independently owned and operated.

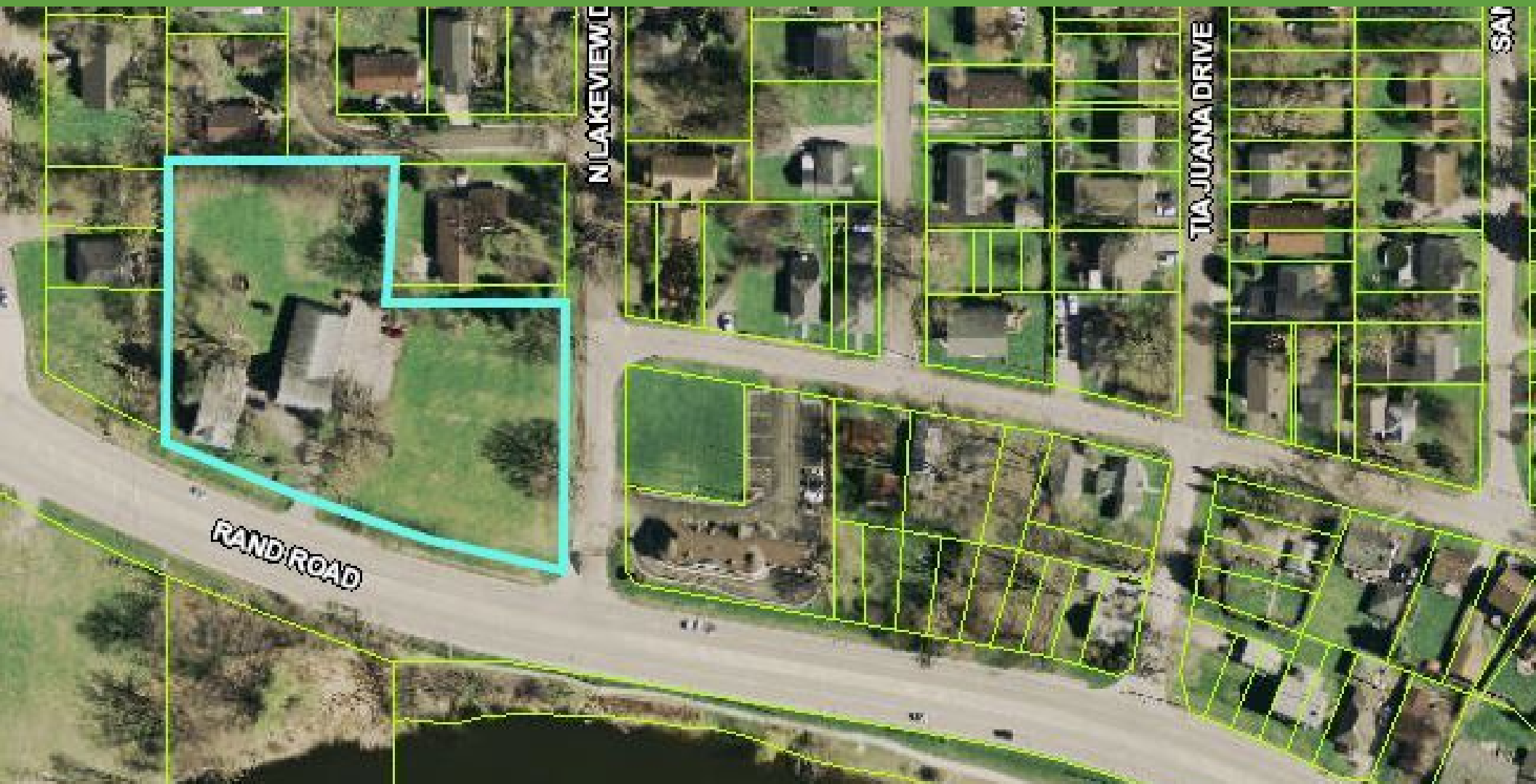
We obtained the information above from sources we believe to be reliable. However, we have not verified its accuracy and make no guarantee, warranty or representation about it. It is submitted subject to the possibility of errors, omissions, change of price, rental or other conditions, prior sale, lease or financing, or withdrawal without notice. We include projections, opinions, assumptions or estimates for example only, and they may not represent current or future performance of the property. You and your tax and legal advisors should conduct your own investigation of the property and transaction.

542 Rand RD

MCHENRY, IL 60050

FOR SALE

Listing Price \$395,000



www.SperryCGA.com

Wayne Kurchina, CCIM, CIPS

MANAGING BROKER/OWNER

815.344.8900

wayne.kurchina@sperrycga.com

IL #471.000538 | WI #56313-090

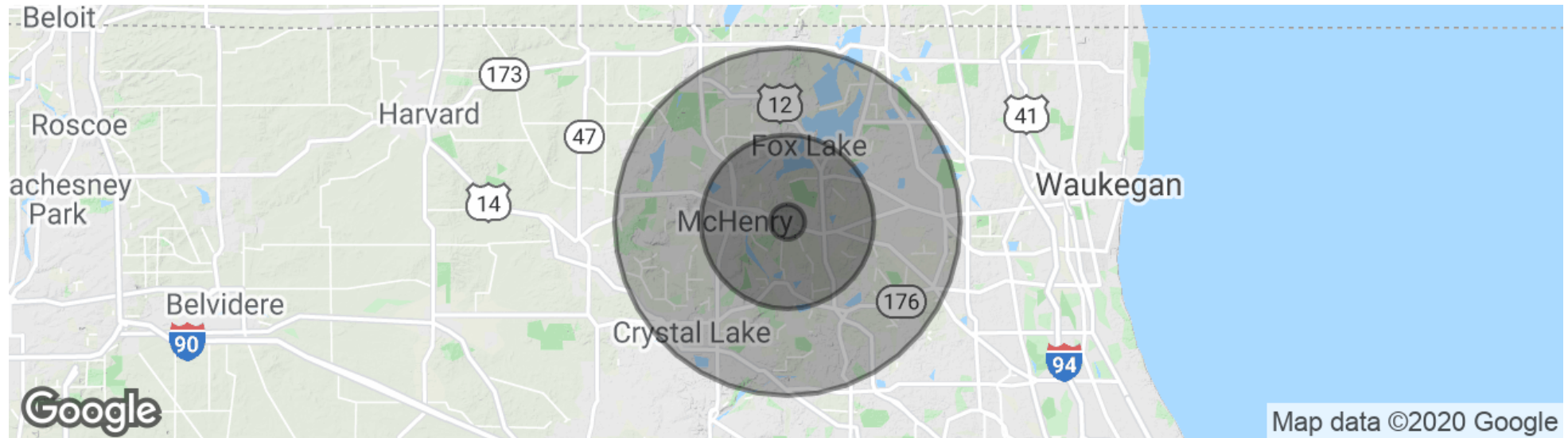
Each office independently owned and operated.

We obtained the information above from sources we believe to be reliable. However, we have not verified its accuracy and make no guarantee, warranty or representation about it. It is submitted subject to the possibility of errors, omissions, change of price, rental or other conditions, prior sale, lease or financing, or withdrawal without notice. We include projections, opinions, assumptions or estimates for example only, and they may not represent current or future performance of the property. You and your tax and legal advisors should conduct your own investigation of the property and transaction.

542 Rand RD

MCHENRY, IL 60050

FOR SALE
Listing Price \$395,000



POPULATION

	1 MILE	5 MILES	10 MILES
Total population	2,142	68,887	303,937
Median age	39.6	37.9	37.0
Median age (Male)	38.3	37.0	36.2
Median age (Female)	41.3	38.5	37.3

HOUSEHOLDS & INCOME

	1 MILE	5 MILES	10 MILES
Total households	822	26,022	108,721
# of persons per HH	2.6	2.6	2.8
Average HH income	\$85,679	\$81,937	\$88,886
Average house value	\$240,617	\$268,372	\$294,191

* Demographic data derived from 2010 US Census



www.SperryCGA.com

Wayne Kurchina, CCIM, CIPS
MANAGING BROKER/OWNER
615.344.6950
wayne.kurchina@sperrycga.com
IL #471.000538 | WI #56313-090

Each office independently owned and operated.

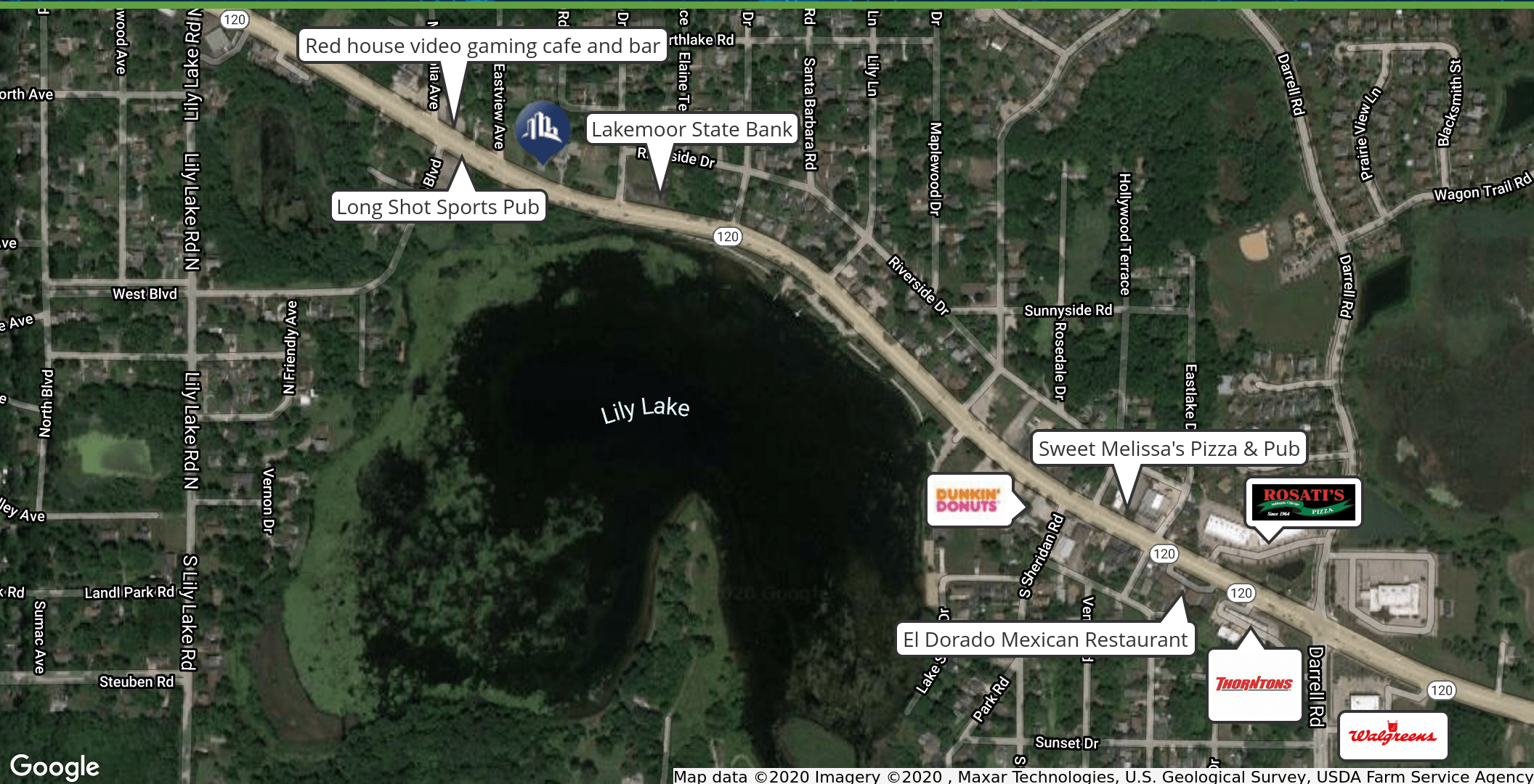
We obtained the information above from sources we believe to be reliable. However, we have not verified its accuracy and make no guarantee, warranty or representation about it. It is submitted subject to the possibility of errors, omissions, change of price, rental or other conditions, prior sale, lease or financing, or withdrawal without notice. We include projections, opinions, assumptions or estimates for example only, and they may not represent current or future performance of the property. You and your tax and legal advisors should conduct your own investigation of the property and transaction.

542 Rand RD

MCHENRY, IL 60050

FOR SALE

Listing Price \$398,000



Google

Map data ©2020 Imagery ©2020 , Maxar Technologies, U.S. Geological Survey, USDA Farm Service Agency



www.SperryCGA.com

Wayne Kurchina, CCIM, CIPS

MANAGING BROKER/OWNER

815.344.8900

wayne.kurchina@sperrycga.com

IL #471.000538 | WI #56313-090

Each office independently owned and operated.

We obtained the information above from sources we believe to be reliable. However, we have not verified its accuracy and make no guarantee, warranty or representation about it. It is submitted subject to the possibility of errors, omissions, change of price, rental or other conditions, prior sale, lease or financing, or withdrawal without notice. We include projections, opinions, assumptions or estimates for example only, and they may not represent current or future performance of the property. You and your tax and legal advisors should conduct your own investigation of the property and transaction.