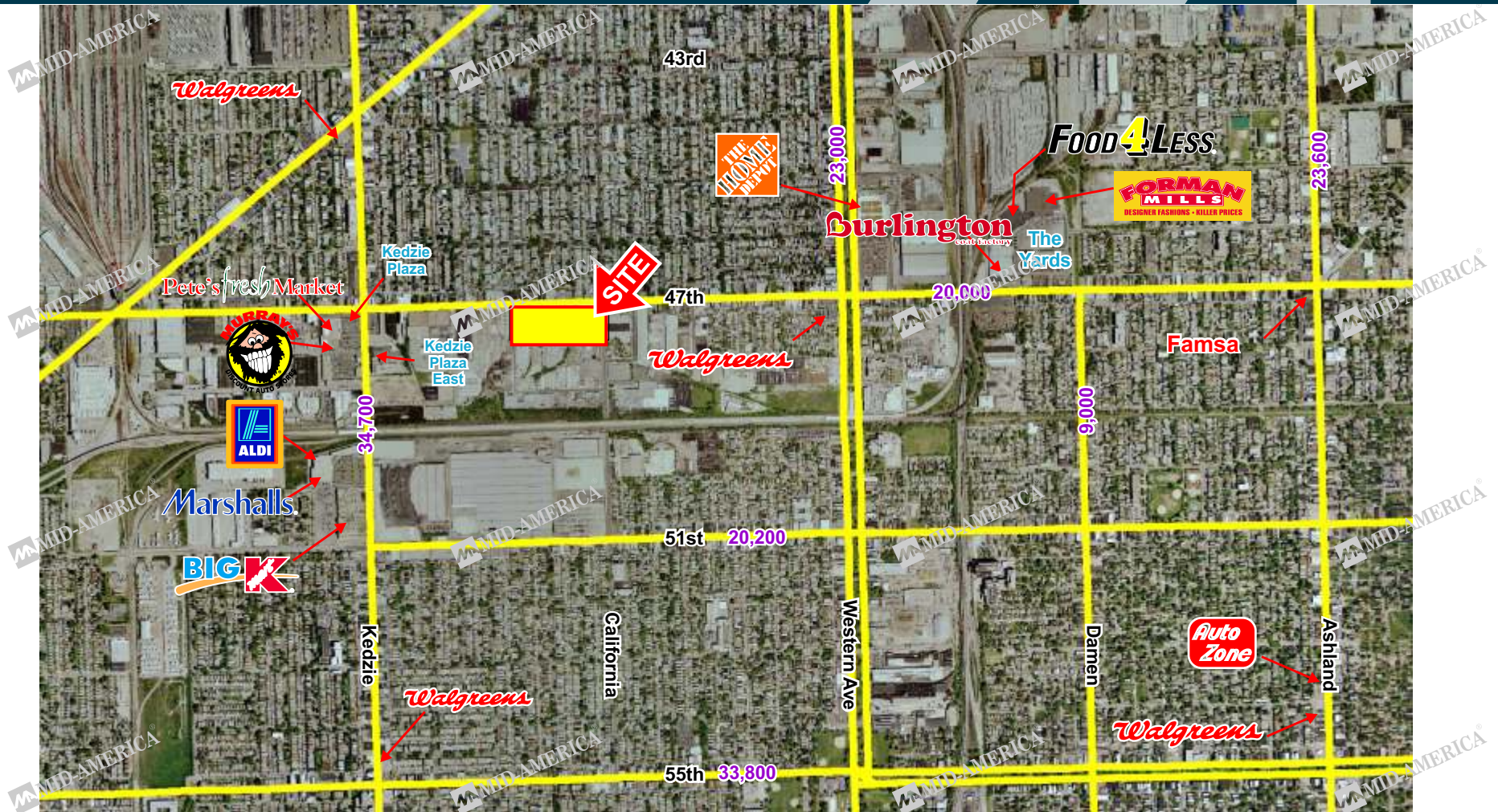


# BIG BOX DEVELOPMENT OPPORTUNITY

Southwest Corner of 47th Street and California Avenue, Chicago, IL



## CONTACT

PAUL BRYANT

T: 630.954.7354

F: 630.954.7302

[pbryant@midamericagr.com](mailto:pbryant@midamericagr.com)

ANDREW BECKER

T: 630.954.7440

F: 630.954.7302

[abecker@midamericagr.com](mailto:abecker@midamericagr.com)



**MID-AMERICA®**

Real Estate Corporation

A MEMBER OF CHAINLINKS RETAIL ADVISORS

# BIG BOX DEVELOPMENT OPPORTUNITY

Southwest Corner of 47th Street and California Avenue, Chicago, IL

## ADDRESS



Southwest corner of 47th Street and California Avenue, Chicago, IL

## AVAILABLE SPACE

**SF**

Anchor, Small Shop Retail, Outlot Pad

## FEATURES



Development to include approximately 450 car parking lot.

Stop-lit corner in strong trade area.

Centrally located between four dense residential markets: Brighton Park, Back of the Yards, Archer Heights, and Gage Park.

Convenient access to I-55 and the Dan Ryan Expressways.

## TRADE AREA DEMOGRAPHICS

1 Mile	2 Mile	3 Mile
\$44,889 Est. Avg. Income	\$45,688 Est. Avg. Income	\$46,583 Est. Avg. Income
29,671 Est. Daytime Pop.	97,219 Est. Daytime Pop.	209,806 Est. Daytime Pop.
56,652 Est. Population	180,914 Est. Population	367,667 Est. Population
14,761 Est. Households	47,113 Est. Households	99,165 Est. Households

## AREA RETAILERS



**Pete's fresh Market**



## CONTACTS

**PAUL BRYANT**

T: 630.954.7354  
F: 630.954.7302  
pbryant@midamericagr.com

**ANDREW BECKER**

T: 630.954.7440  
F: 630.954.7302  
abecker@midamericagr.com



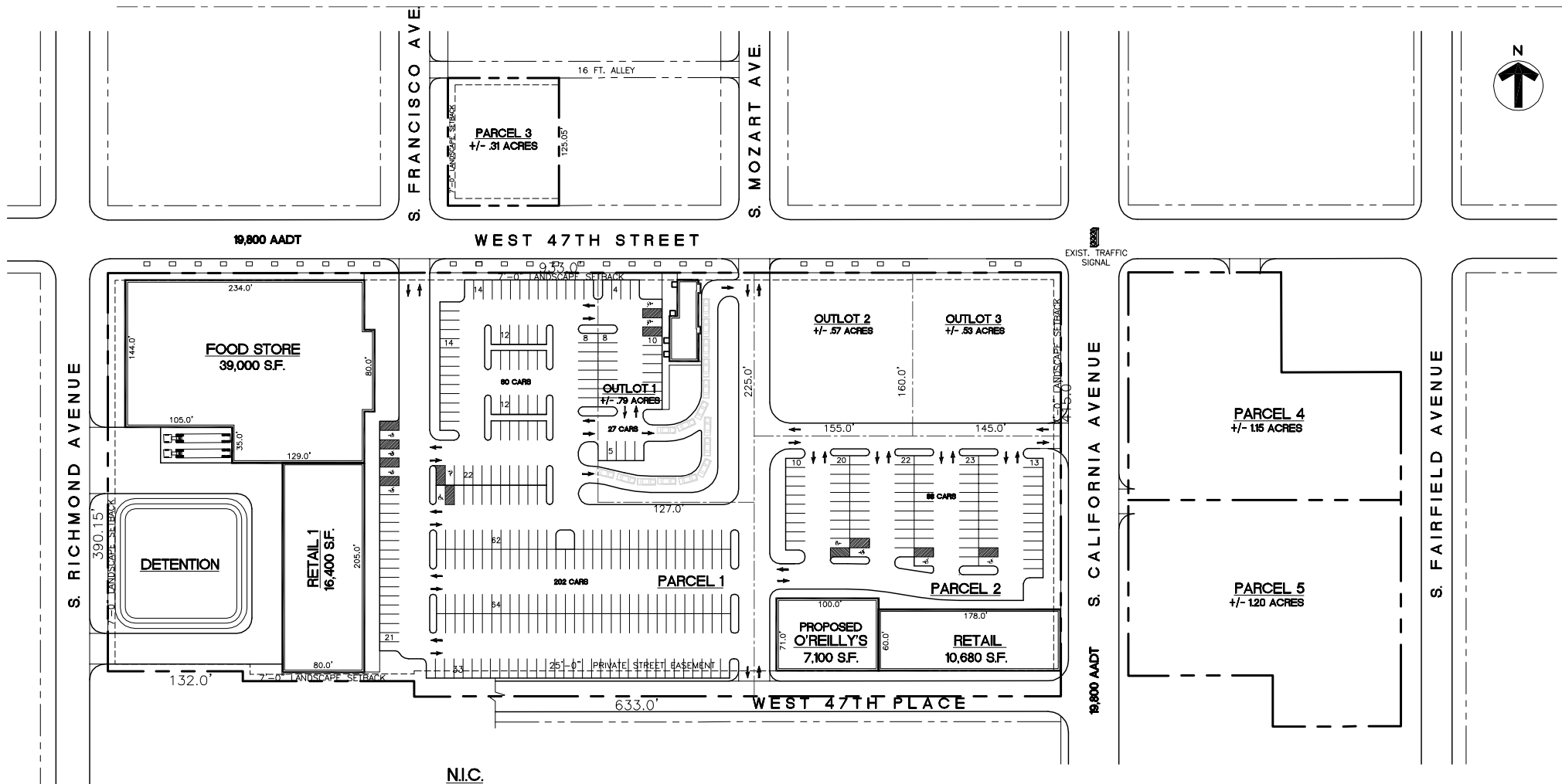
**MID-AMERICA®**  
Real Estate Corporation

Tribune Tower  
435 North Michigan Avenue, Suite 2009  
Chicago, IL 60611  
www.midamericagr.com

A MEMBER OF CHAINLINKS RETAIL ADVISORS

# BIG BOX DEVELOPMENT OPPORTUNITY

Southwest Corner of 47th Street and California Avenue, Chicago, IL



## CONTACTS

PAUL BRYANT

T: 630.954.7354  
F: 630.954.7302  
pbryant@midamericagrp.com

ANDREW BECKER

T: 630.954.7440  
F: 630.954.7302  
abecker@midamericagrp.com



Tribune Tower  
435 North Michigan Avenue, Suite 2009  
Chicago, IL 60611  
www.midamericagrp.com

A MEMBER OF CHAINLINKS RETAIL ADVISORS



# BIG BOX DEVELOPMENT OPPORTUNITY

Southwest Corner of 47th Street and California Avenue, Chicago, IL



## CONTACTS

PAUL BRYANT

T: 630.954.7354  
F: 630.954.7302  
pbryant@midamericagrp.com

ANDREW BECKER

T: 630.954.7440  
F: 630.954.7302  
abecker@midamericagrp.com



Tribune Tower  
435 North Michigan Avenue, Suite 2009  
Chicago, IL 60611  
[www.midamericagrp.com](http://www.midamericagrp.com)

A MEMBER OF CHAINLINKS RETAIL ADVISORS