

# THE QUARRY

SEC Joliet Rd & La Grange Rd / Hodgkins, IL



**MID-AMERICA**<sup>®</sup>  
Asset Management, Inc.

**ALDI COMING SOON**



RETAIL OPPORTUNITY

# THE QUARRY



## Address

SEC Joliet Road  
& La Grange Road  
Hodgkins, IL

## Features

- Approximately 2,116 parking spaces (4.18/1,000)
- Approximately one (1) mile north of the Stevenson I-55 and approximately two (2) miles east of the Tri-State 294

## Availability

1,100–6,400 SF

## Demographics

|                      | 1 Mile   | 3 Miles   | 5 Miles   |
|----------------------|----------|-----------|-----------|
| POPULATION           | 5,712    | 77,034    | 268,543   |
| HOUSEHOLDS           | 2,426    | 28,740    | 100,800   |
| AVG HOUSEHOLD INCOME | \$81,183 | \$125,849 | \$120,401 |
| DAYTIME POPULATION   | 9,013    | 81,976    | 262,586   |

## Anchors



# THE QUARRY



**Building A**

| Suite            | Tenant              | SF            |
|------------------|---------------------|---------------|
| 100A-600A        | ALDI                | 21,000        |
| 700A             | Sally Beauty Supply | 2,000         |
| 700B             | Lease Pending       | 3,000         |
| <b>Total GLA</b> |                     | <b>26,000</b> |

**Building B**

| Suite            | Tenant      | SF           |
|------------------|-------------|--------------|
| 100B             | Available   | 1,100        |
| 200B             | GNC         | 1,600        |
| 400B             | Jenny Craig | 1,600        |
| <b>Total GLA</b> |             | <b>4,300</b> |

**Building C**

| Suite            | Tenant                   | SF            |
|------------------|--------------------------|---------------|
| 100C             | Ulta                     | 8,600         |
| 400C             | PetCo (Available 6/1/21) | 6,400         |
| 600C             | AT&T                     | 1,600         |
| 650C             | Nail Salon               | 1,050         |
| 700C             | Cost Cutters             | 1,050         |
| 750C             | America's Best           | 3,967         |
| 800C             | Available                | 2,593         |
| <b>Total GLA</b> |                          | <b>25,260</b> |

**Anchor**

| Suite            | Tenant     | SF             |
|------------------|------------|----------------|
|                  | Office Max | 24,428         |
|                  | Kohl's     | 94,788         |
|                  | Wal-Mart   | 198,363        |
|                  | Sam's Club | 134,162        |
| <b>Total GLA</b> |            | <b>451,741</b> |

**Outlots**

| Suite            | Tenant        | SF           |
|------------------|---------------|--------------|
| 9400             | Dunkin Donuts | 1,800        |
| 9402             | Verizon       | 3,150        |
| 9404             | Game Stop     | 1,600        |
| 9404-B           | Available     | 1,592        |
| 9404-C           | Lease Pending | 1,500        |
| <b>Total GLA</b> |               | <b>9,752</b> |

**Total Buildings GLA 516,951**

\*Shaded areas are separately owned

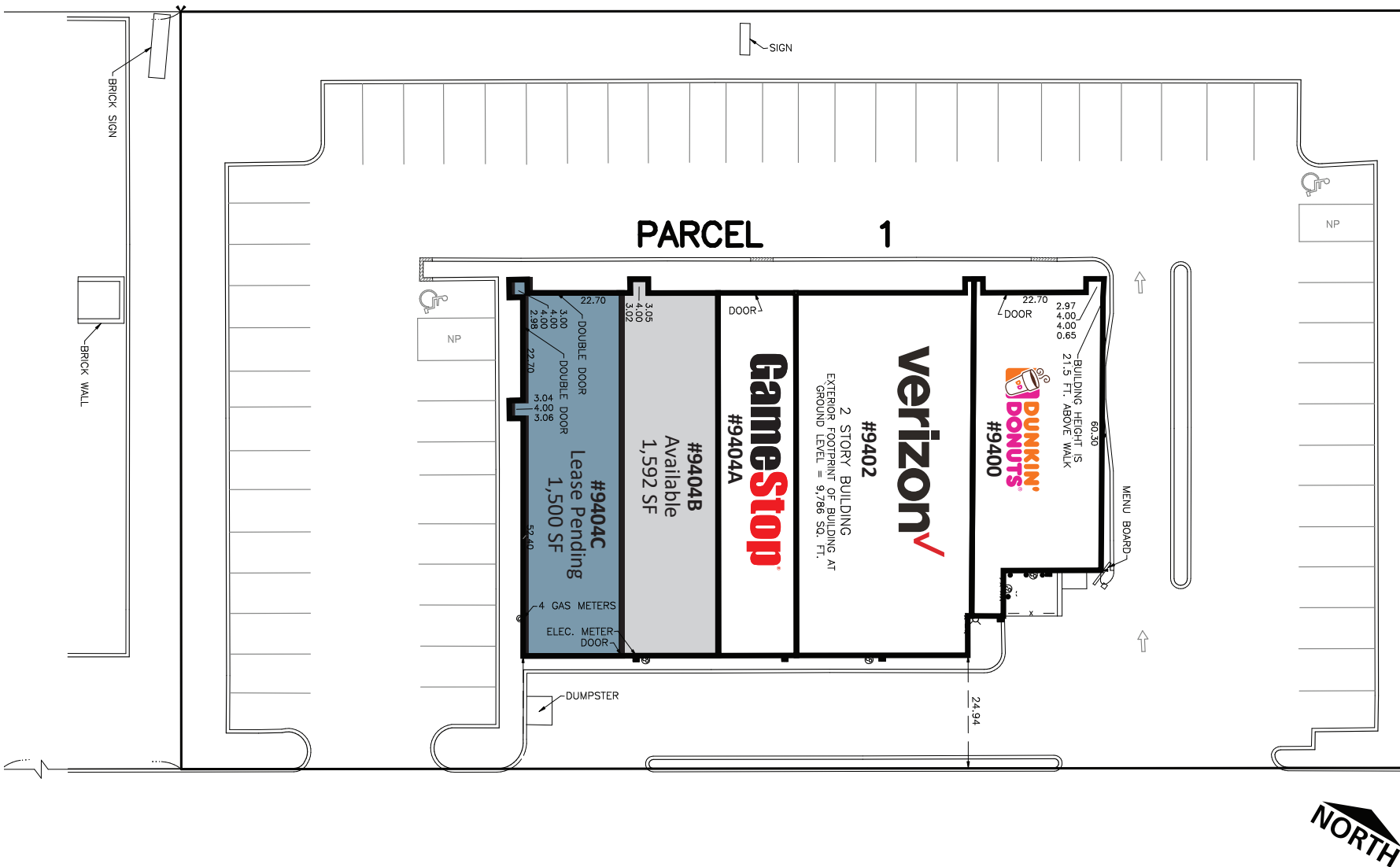


# THE QUARRY



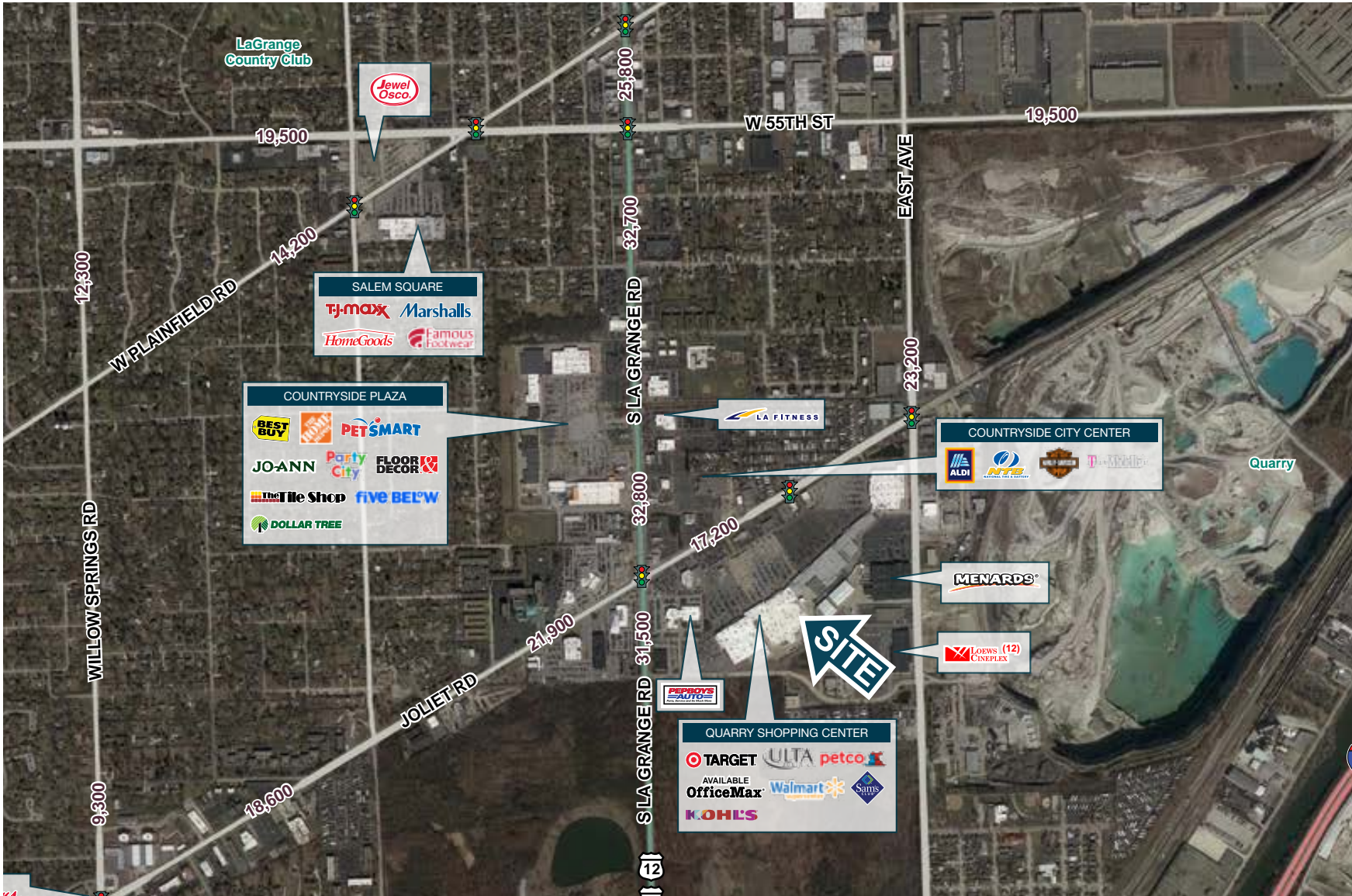
Outlot Site Plan

Joliet Road: 18,300 vpd



SITE PLAN

# THE QUARRY



# THE QUARRY



Liz  
Krebs

T: 630.954.7362

F: 630.954.7304

[LKrebs@MidAmericaGrp.com](mailto:LKrebs@MidAmericaGrp.com)

Sarah  
Norlander

T: 630.954.7290

F: 630.954.7304

[SNorlander@MidAmericaGrp.com](mailto:SNorlander@MidAmericaGrp.com)



**MID-AMERICA**<sup>®</sup>  
Asset Management, Inc.

One Parkview Plaza, 9th Floor  
Oakbrook Terrace, Illinois 60181  
630.954.7300

[MidAmericaGrp.com](http://MidAmericaGrp.com)

CONTACT