



Previous Set-up

Fantastic Restaurant
for Lease in the
Heart of the Westport
Shopping District

4,731 Sq. Ft.

Call for Full
Rental Details

- **Provide Dining to One of America's Most Wealthy Communities**
- Coveted Restaurant Zoning & Infrastructure in Place
- Rated 23rd Wealthiest Town in America
- Prime Site in One of Fairfield County's Premier Retail Central Business Districts
- Ideal Location with Incredible Visibility and Access to Free Parking
- Next to Exciting Bedford Square Development



Entrance from Parker Harding Plaza



CONTACT OWNER'S
EXCLUSIVE AGENTS: HARYN INTNER 914-779-8200 x123 haryn@admiralrealestate.com
JON GORDON 914-779-8200 x115 jgordon@admiralrealestate.com


BROKERS
PROTECTED



ADMIRAL

REAL ESTATE SERVICES

Ample downtown parking
available: Approx. 2,500 spaces

 - Free municipal
parking lot



CONTACT OWNER'S
EXCLUSIVE AGENTS:

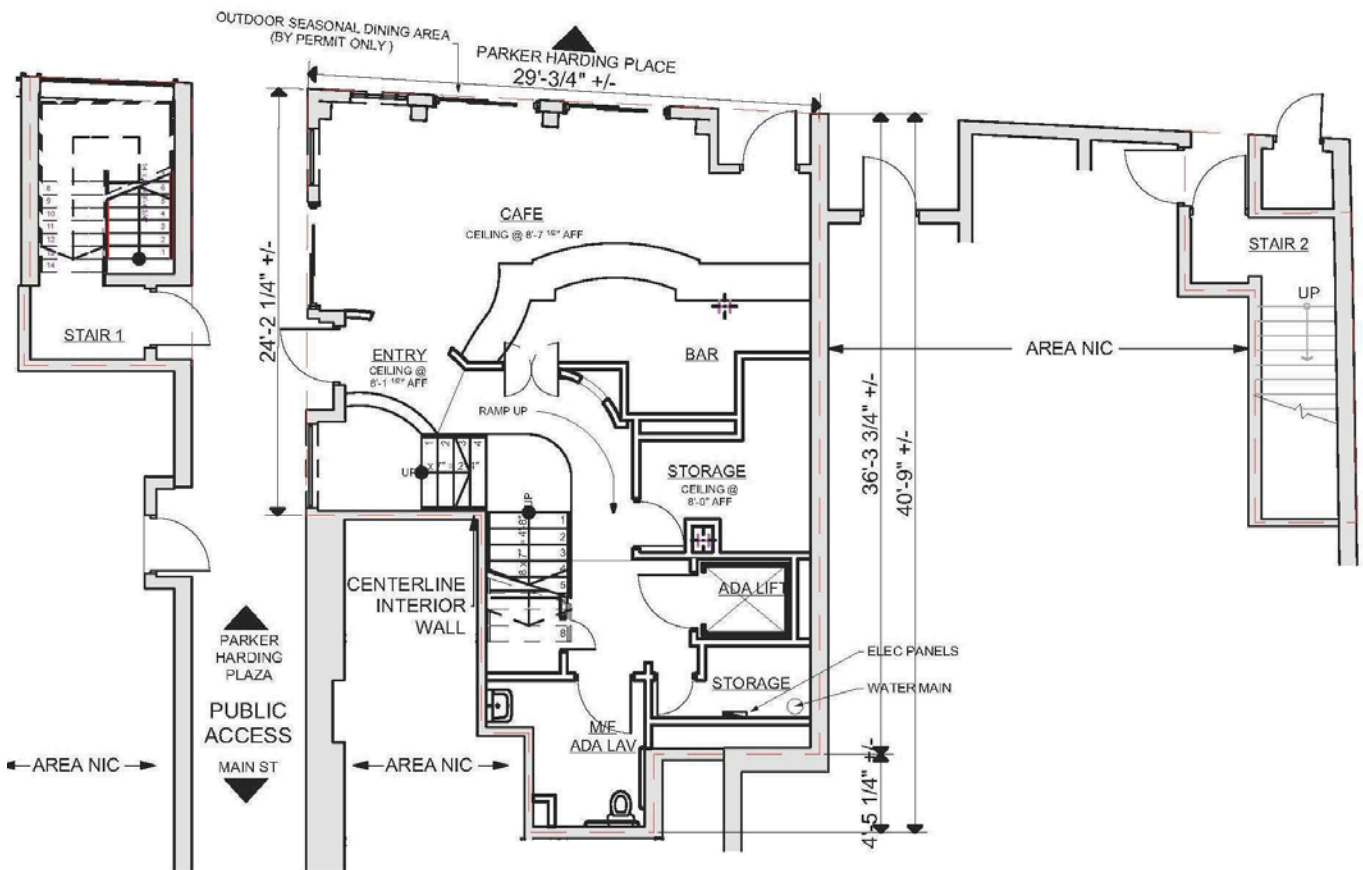
HARYN INTNER 914-779-8200 x123 haryn@admiralrealestate.com
JON GORDON 914-779-8200 x115 jgordon@admiralrealestate.com

BROKERS
PROTECTED



Entrance and Main Street Signage

FIRST FLOOR ENTRANCE & BAR AREA

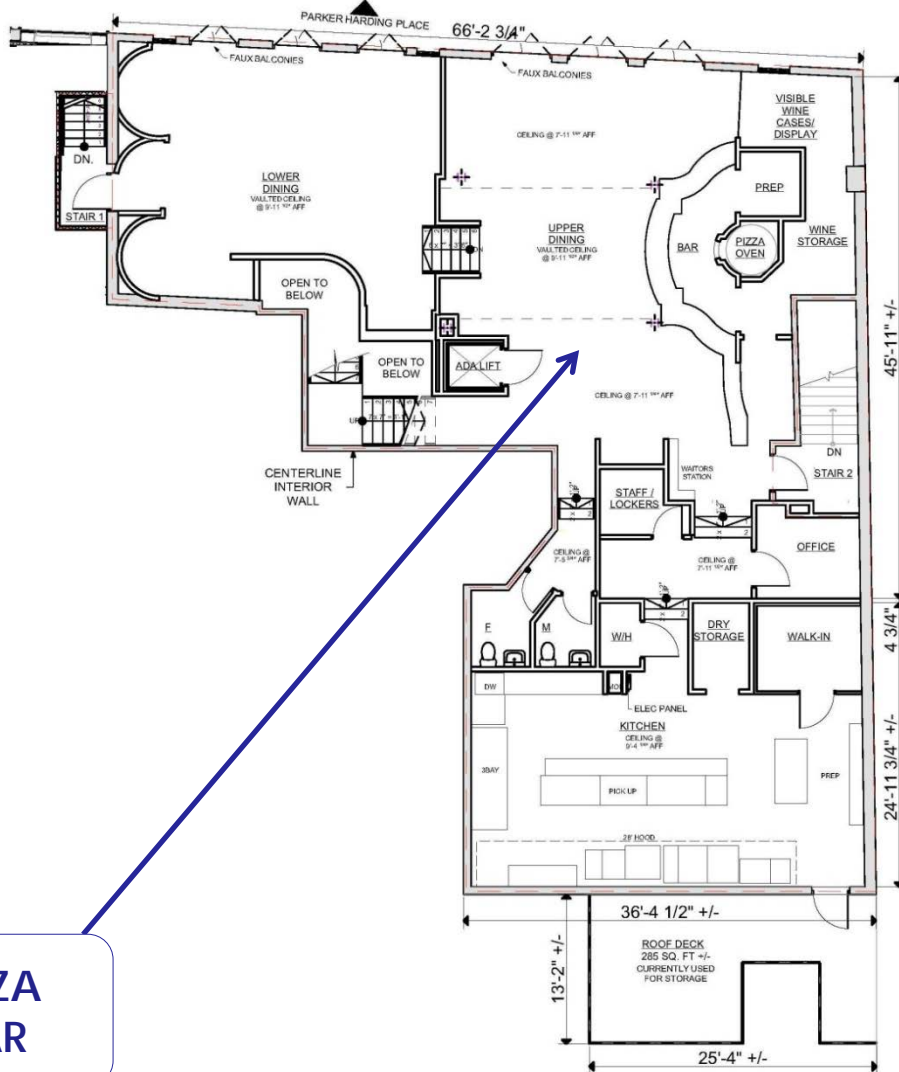


CONTACT OWNER'S
EXCLUSIVE AGENTS:

HARYN INTNER 914-779-8200 x123 haryn@admiralrealestate.com
JON GORDON 914-779-8200 x115 jgordon@admiralrealestate.com

BROKERS
PROTECTED

MAIN DINING LEVEL



**PIZZA
BAR**



**Previous
Set-up**

CONTACT OWNER'S
EXCLUSIVE AGENTS:

HARYN INTNER 914-779-8200 x123
JON GORDON 914-779-8200 x115

haryn@admiralrealestate.com
jgordon@admiralrealestate.com

BROKERS
PROTECTED