

FOR SALE

 S.L. NUSBAUM Realty Co.
Since 1906.



INDUSTRIAL CONDO UNITS

1620 CENTERVILLE TURNPIKE
SUITES 116-122
VIRGINIA BEACH, VA 23464

FOR MORE INFORMATION, PLEASE CONTACT:

BEN LEON
ASSOCIATE
757.640.2272
C. 757.469.2365
BLEON@SLNUSBAUM.COM

EXECUTIVE SUMMARY

1620 CENTERVILLE TURNPIKE, SUITES 116-122, VIRGINIA BEACH, VA 23464



OFFERING SUMMARY

Sale Price:	\$1,288,000
Building Size:	15,880 SF
Warehouse Space:	11,200 SF
Office/Storage Space:	4,680 SF
Overhead Grade-Level Doors:	Five 10'x12'
Overhead Grade-Level Door:	One 12'x12'

PROPERTY OVERVIEW

Seven contiguous industrial condominium units consisting of 15,880 total SF with 11,200 SF of warehouse space on the first floor and 4,680 SF of office/storage space on the second floor (finished and unfinished)

PROPERTY HIGHLIGHTS

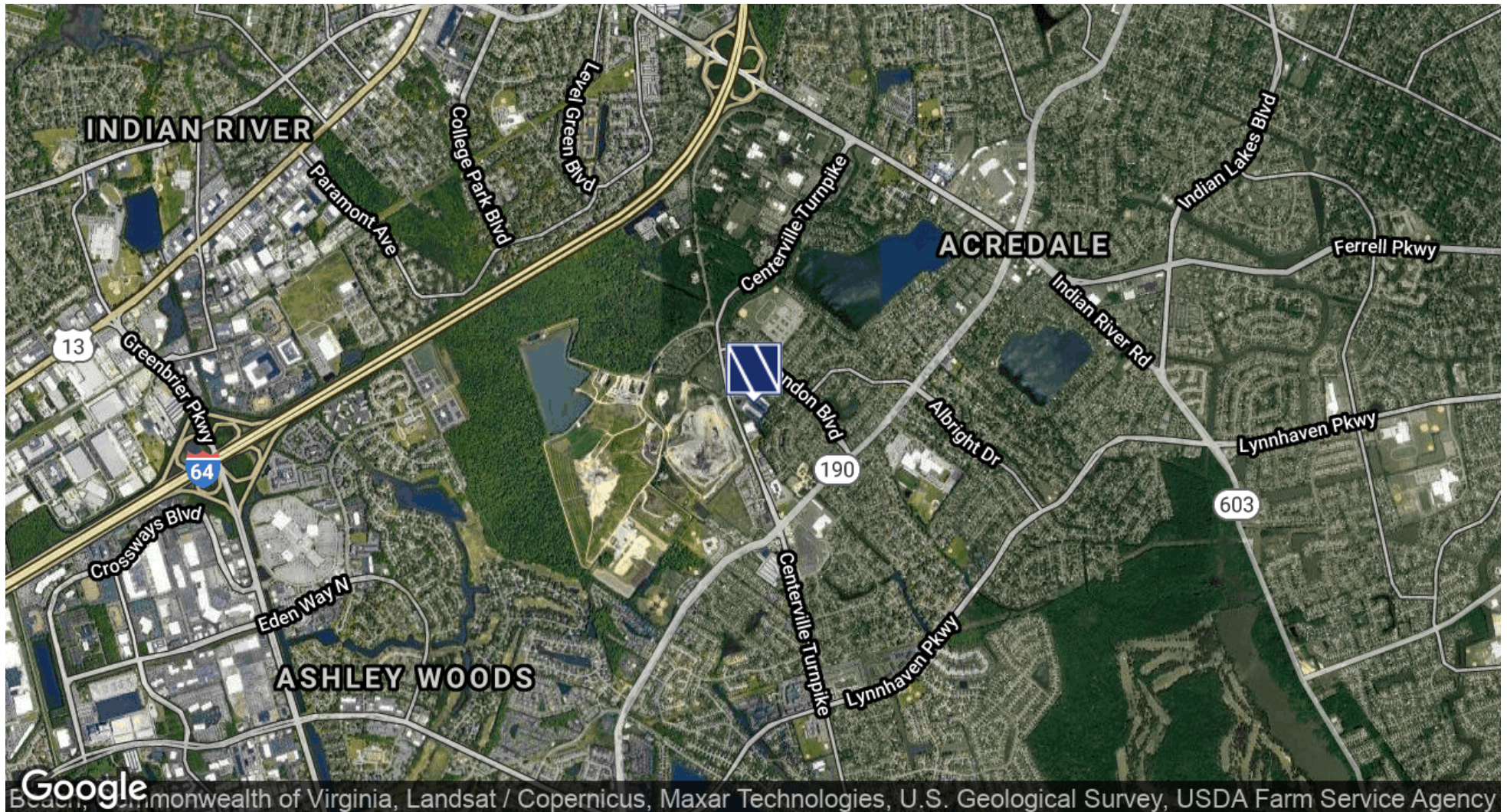
- Central location near the Greenbrier submarket of Chesapeake with close access to I-64
- 3 phase power with five 200 amp panels
- Each unit is joined together (see Floor Plan on Page 4)
- Fully conditioned space in excellent condition

FOR MORE INFORMATION, PLEASE CONTACT:

BEN LEON
ASSOCIATE
757.640.2272
C. 757.469.2365
BLEON@SLNUSBAUM.COM

LOCATION MAP

1620 CENTERVILLE TURNPIKE, SUITES 116-122, VIRGINIA BEACH, VA 23464



FOR MORE INFORMATION, PLEASE CONTACT:

BEN LEON

ASSOCIATE

757.640.2272

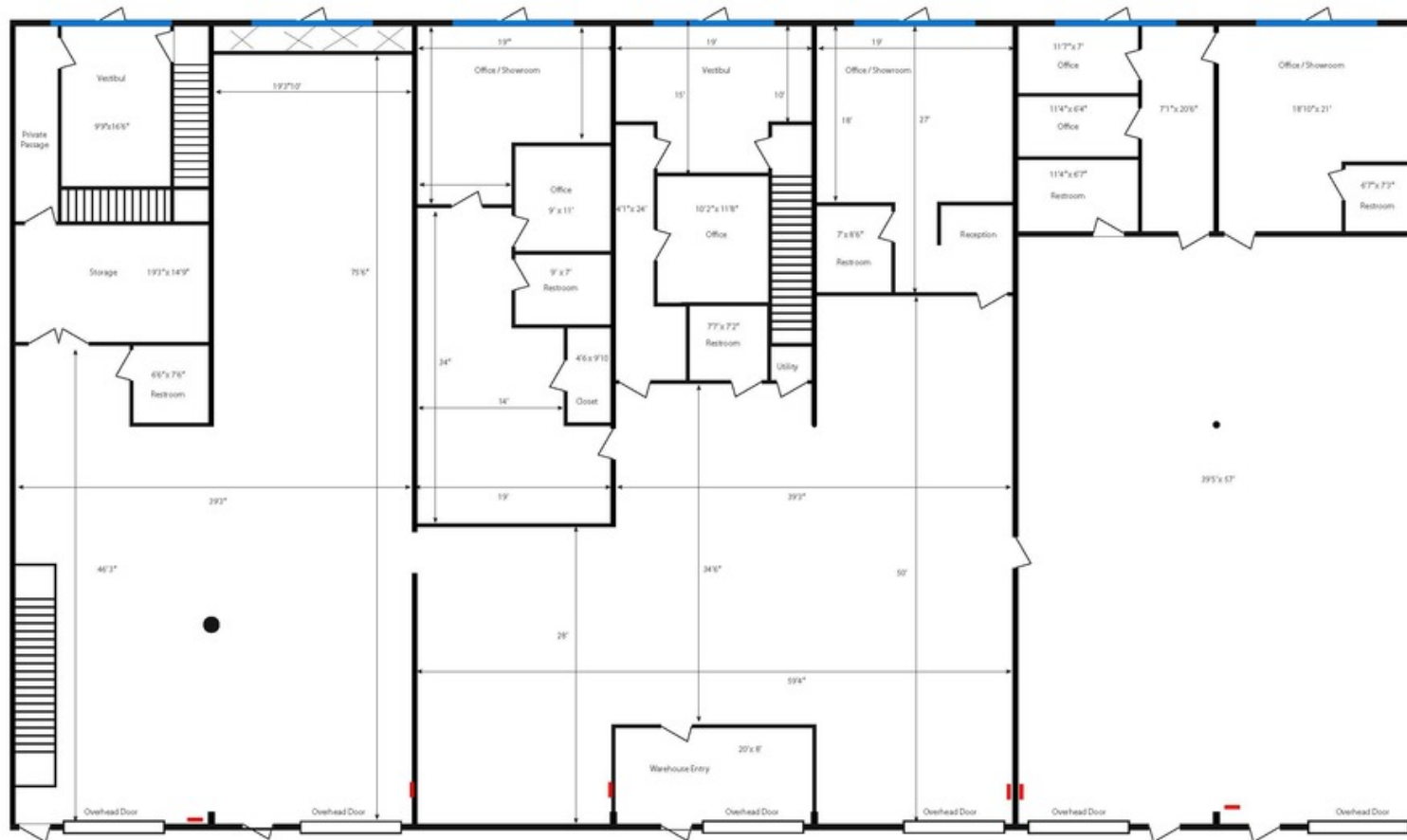
C. 757.469.2365

BLEON@SLNUSBAUM.COM

FIRST FLOOR PLAN

1620 CENTERVILLE TURNPIKE, SUITES 116-122, VIRGINIA BEACH, VA 23464

1620 Centerville Tpke. / Suites 116-122 / Lower Level / 140'x 80' / 11200 sqft foot print



Warehouse Space 8120 sqft / Office Space 3080 sqft / 6 x 200 amp Power Panel

FOR MORE INFORMATION, PLEASE CONTACT:

BEN LEON
ASSOCIATE
757.640.2272
C. 757.469.2365
BLEON@SLNUSBAUM.COM

CONTACT ME

BEN LEON
ASSOCIATE
757.640.2272
C. 757.469.2365
BLEON@SLNUSBAUM.COM

S.L. NUSBAUM REALTY CO.
1700 WELLS FARGO CENTER, 440 MONTICELLO AVENUE, NORFOLK, VA 23510
757.627.8611
SLNUSBAUM.COM

DISCLAIMER:
No warranty or representation, expressed or implied, is made to the accuracy or completeness of the information contained herein, and same is submitted subject to errors, omissions, change of price, rental or other conditions, withdrawal without notice, and to any special listing conditions imposed by the property owner(s). As applicable, we make no representation as to the condition of the property (or properties) in question.

