

Retail Space for Lease with High Traffic Volume

115 Chickamauga Ave, Rossville, GA 30741



Listing ID: 30193485
 Status: Active
 Property Type: Retail-Commercial For Lease
 Retail-Commercial Type: Retail-Pad
 Contiguous Space: 981 SF
 Total Available: 981 SF
 Lease Rate: \$8 - 10 PSF (Annual)
 Base Monthly Rent: \$654 - 817.50
 Lease Type: NNN



Overview/Comments

Directions:

From I-75 S to I-24 W. Use the right 2 lanes to take exit 2 for I-24 W toward Chattanooga/Birmingham. Continue onto I-24 W. Take exit 180B to merge onto Rossville Blvd toward US-27 S. Merge onto Rossville Blvd. Continue onto Chickamauga Ave. Destination will be on the right.

More Information Online

<https://commercial.gcar.net//listing/30193485>

QR Code

Scan this image with your mobile device:



General Information

Tax ID/APN: 2003 005
 Retail-Commercial Type: Retail-Pad

Available Space

Suite/Unit Number:	F	Space Type:	Relet
Space Available:	981 SF	Date Available:	01/01/2018
Minimum Divisible:	981 SF	Lease Rate:	\$8 - 10 PSF (Annual)
Maximum Contiguous:	981 SF	Lease Type:	NNN

Building Related

Passenger Elevators: 0
 Freight Elevators: 0

Location

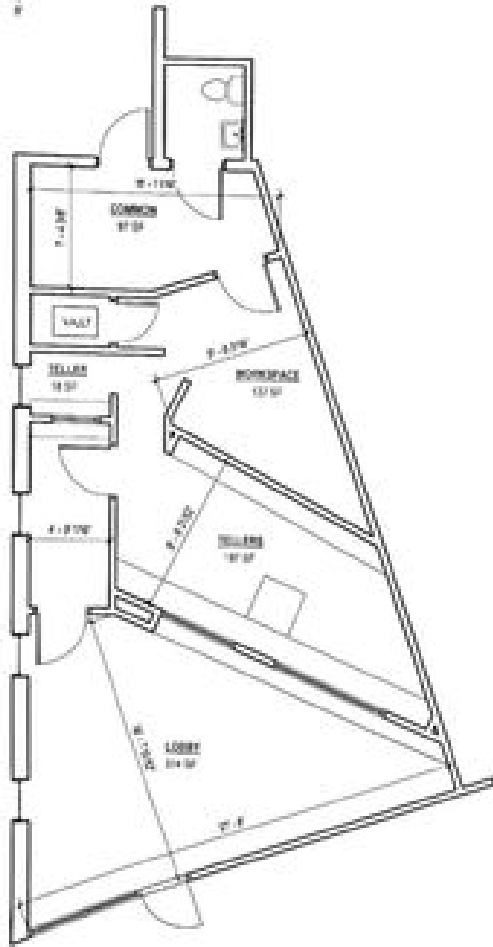
Address: 115 Chickamauga Ave, Rossville, GA 30741
 County: Walker
 MSA: Chattanooga



Property Images

115 Rossville Avenue
Suite F Lease Plan

Rentable Area: 973 SF



Suite F Diagram

Property Contacts



William B Raines Jr.

The Raines Group, Inc.
423-875-3600 [0]
braines@rainesgroup.com