



PRIME SPACE

Available For Sublease

3000 Ming Avenue • Bakersfield, CA

Property Highlights

- Located in heavy traffic area, across from regional shopping mall.
- 16,400 SF, zoned C-2 Commercial, City of Bakersfield
- Property has direct access from Ming Avenue and Castro Lane.
- Close proximity to Highway 99 on and off ramps.



Property Details

Address	3000 Ming Ave, Bakersfield, CA
Location	NEQ Ming Ave & Highway 99/Wible Rd
Size	16,400 SF
Parcel Size	.98 Acres
Zoning	C-2 Commercial, City of Bakersfield
APN	148-270-20
Rental Rate	\$1.50 PSF NNN

Mark J. Smith, SIOR • Principal • 661 616 3561 • marks@asuassociates.com • CA RE #00632003

Anthony T. Scigliano • Senior Vice President • 661 616 3580 • tscig@asuassociates.com • CA RE #00904956

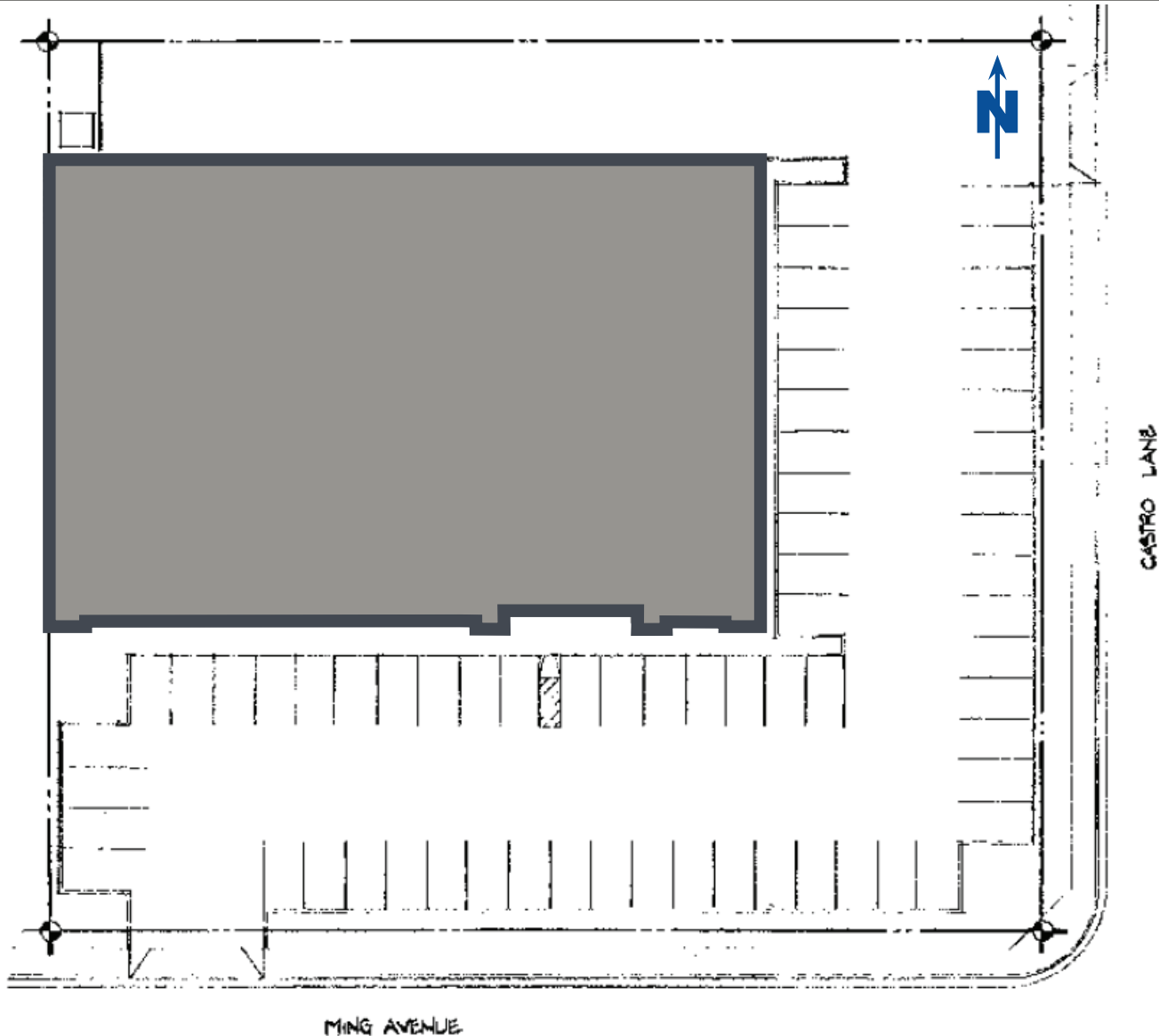
11601 Bolthouse Drive Suite 110 • Bakersfield, CA 93311 • 661 862 5454 main • 661 862 5444 fax

The information contained herein may have been obtained from sources other than ASU Commercial. We have not verified such information and make no guarantees, warranties or representations about such information. It is your responsibility to independently confirm its accuracy and completeness prior to purchasing/leasing the property.

PRIME SPACE ■ AVAILABLE FOR SUBLEASE

3000 Ming Avenue ■ Bakersfield, CA

Site Map



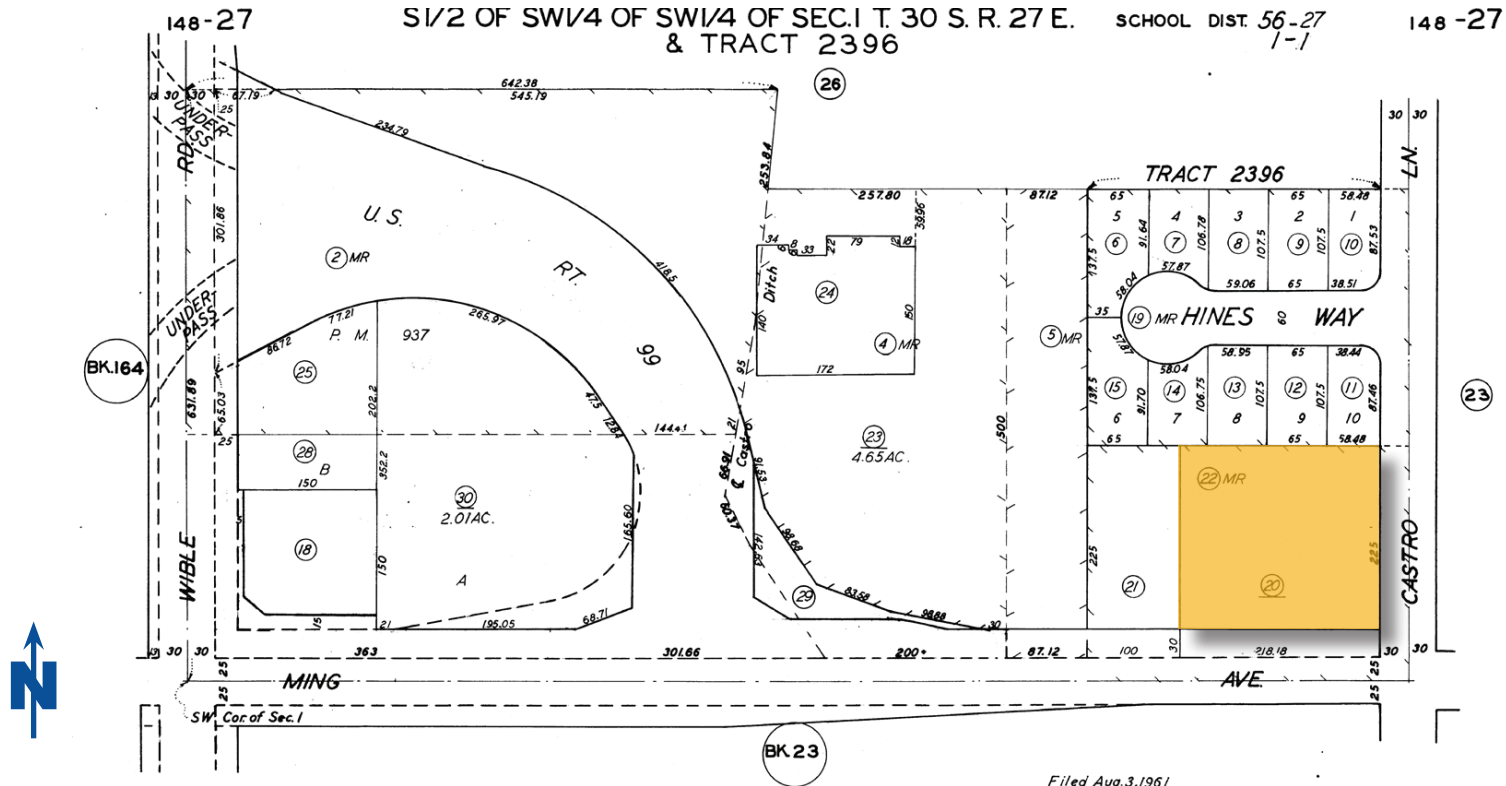
Mark J. Smith, SIOR ■ Principal ■ 661 616 3561 ■ marks@asuassociates.com ■ CA RE #00632003
Anthony T. Scigliano ■ Senior Vice President ■ 661 616 3580 ■ tscig@asuassociates.com ■ CA RE #00904956
11601 Bolthouse Drive Suite 110 ■ Bakersfield, CA 93311 ■ 661 862 5454 main ■ 661 862 5444 fax



PRIME SPACE ■ AVAILABLE FOR SUBLEASE

3000 Ming Avenue ■ Bakersfield, CA

Parcel Map & Exterior Photos



Mark J. Smith, SIOR ■ Principal ■ 661 616 3561 ■ marks@asuassociates.com ■ CA RE #00632003
Anthony T. Scigliano ■ Senior Vice President ■ 661 616 3580 ■ tscig@asuassociates.com ■ CA RE #00904956
 11601 Bolthouse Drive Suite 110 ■ Bakersfield, CA 93311 ■ 661 862 5454 main ■ 661 862 5444 fax



