



# FOR LEASE

**Class A Medical Space - Printers Parkway**

**3225 International Circle**

**Colorado Springs, CO 80910**

**ONE OF THE MOST DISTINGUISHED MEDICAL CAMPUSES  
IN COLORADO SPRINGS**

**Year Built:**

**1997**

**Building:**

**12,000 SF**

**Parking:**

**5:1,000**

**Lease Rate:**

**\$14.00- \$16.00/SF NNN**

**Operating Exp:**

**Approx. \$7.50/SF**

**Term:**

**3- 10 Years**

**Signage:**

**Monument Signage  
Available**



**Features**

- Second Floor- 1,828 SF available
- Well-established Printers Parkway location is ideal for a medical user
- Excellent Owner-User opportunity
- Great views with lots of light
- Great price per square foot

**Ted T. Link**

(719) 337-0066

Ted@cascadecommercial.net

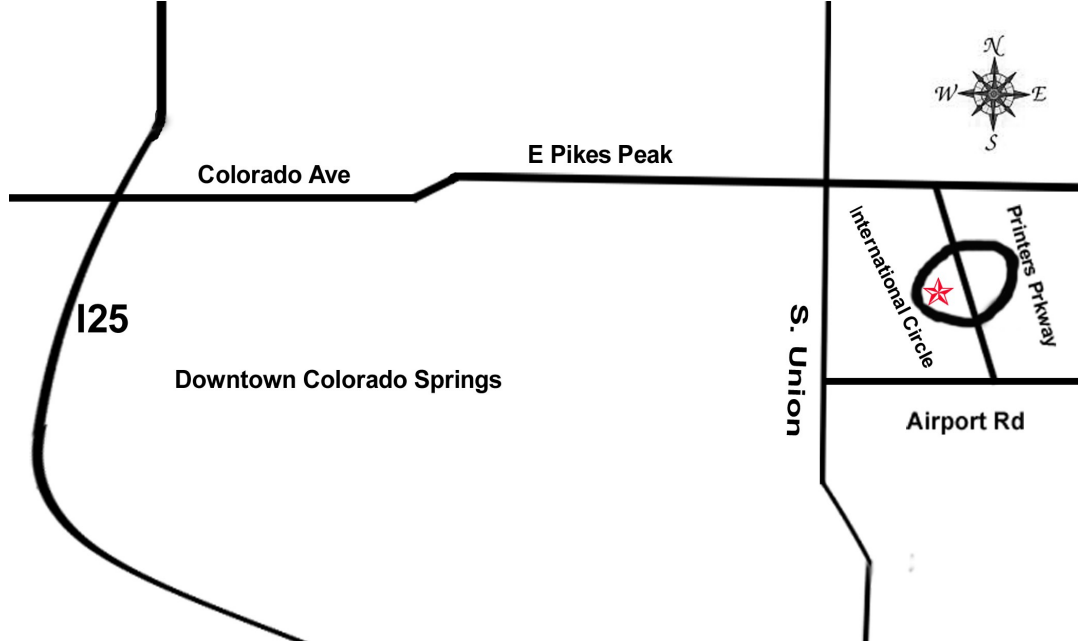
**Cascade Commercial Group**

**(719) 442-6500**

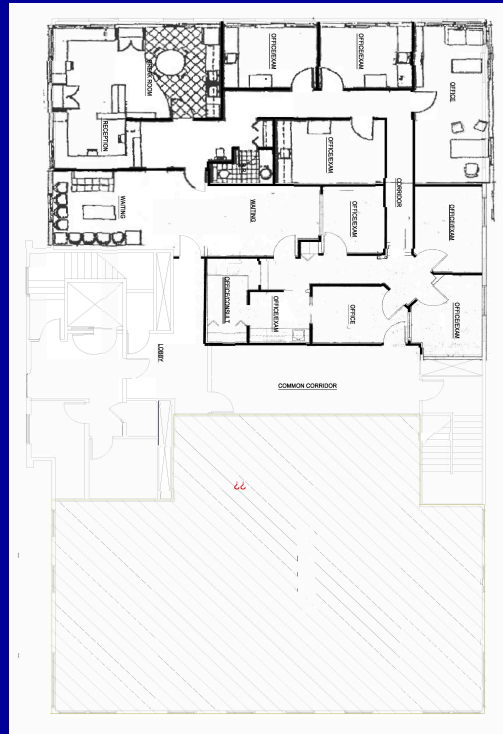
**cascadecommercial.net**

**625 N. Cascade, Suite 210  
Colorado Springs, CO 80903**





# Floor Plans



**2nd Floor - SF 1,828**

**TED T. LINK**

**Cascade Commercial Group**  
625 North Cascade Avenue #120  
Colorado Springs, CO 80903  
Office: 719-442-6500  
Cell: 719-337-0066  
Ted@CascadeCommercial.net  
www.cascadecommercial.net

