

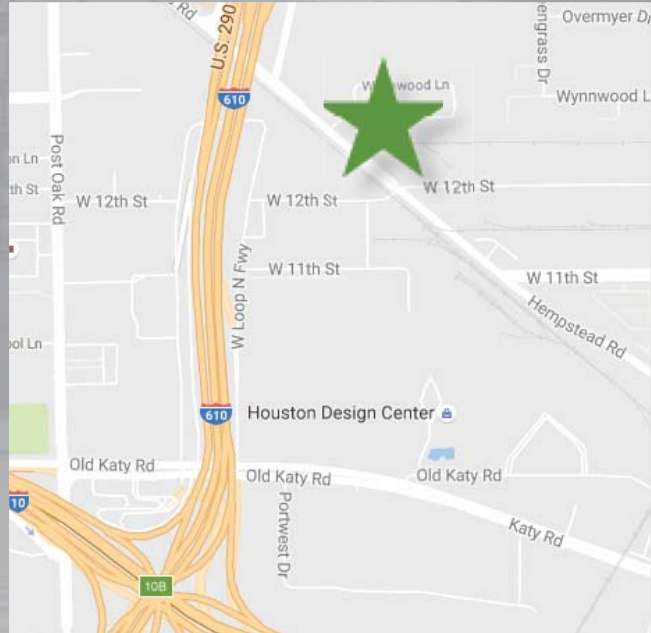


FOR LEASE - 3,795 SF

7236 Wynnwood Lane
Hempstead Highway and 610 | Houston, TX

The property Wynnwood Business Center is a light industrial facility conveniently located within 2 miles of I-10, Highway 290 and the 610 Loop.

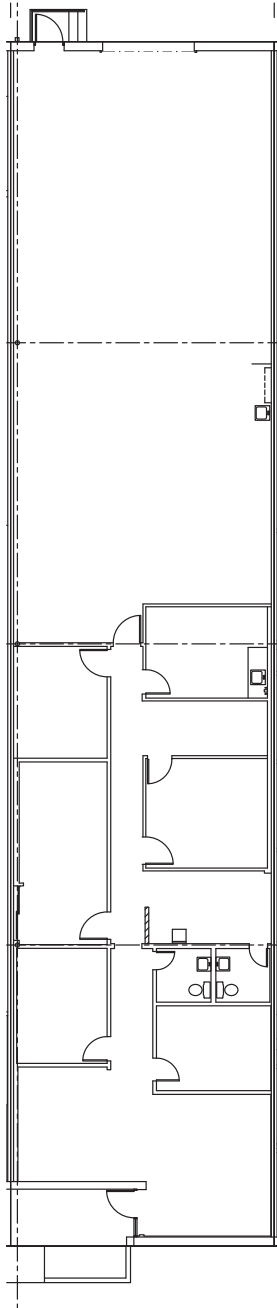
Highlights	
Available Space:	3,795 SF
Office Area:	1,966 SF
Clear Height:	18'
Loading:	1 Semi-Dock
Parking:	1 space /per 1,000 SF
Construction:	Tiltwall



7236 Wynnwood Lane

Hempstead Highway and 610 | Houston, TX

Floor Plan:



Broker Contacts:

David Munson
Boyd Commercial
Direct: (713) 599-3438
dmunson@boydcommercial.net

Greg Barra
Boyd Commercial
Direct: (713) 599-6406
gbarra@boydcommercial.net



Owner Contact:

Richard Prokup
Sr. Vice President
First Industrial Realty Trust, Inc.
Direct: (312) 344-4423
rprokup@firstindustrial.com



www.firstindustrial.com