

2500 FAIRWAY PARK DRIVE

2500-2530 FAIRWAY PARK DRIVE, HOUSTON, TX 77092

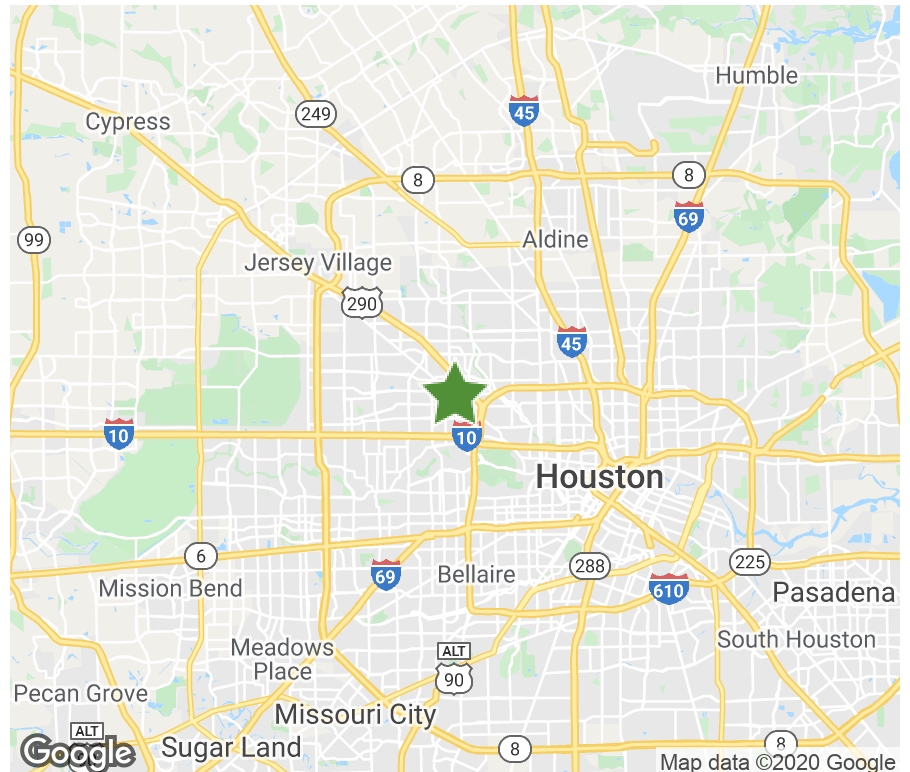


20,155 SF | FOR LEASE

The property 2500 - 2530 Fairway Park Drive is a well-located warehouse facility within close proximity to Loop 610. This facility is situated between 290 and Hempstead Highway and is ideal for distribution in Houston's northwest corridor.

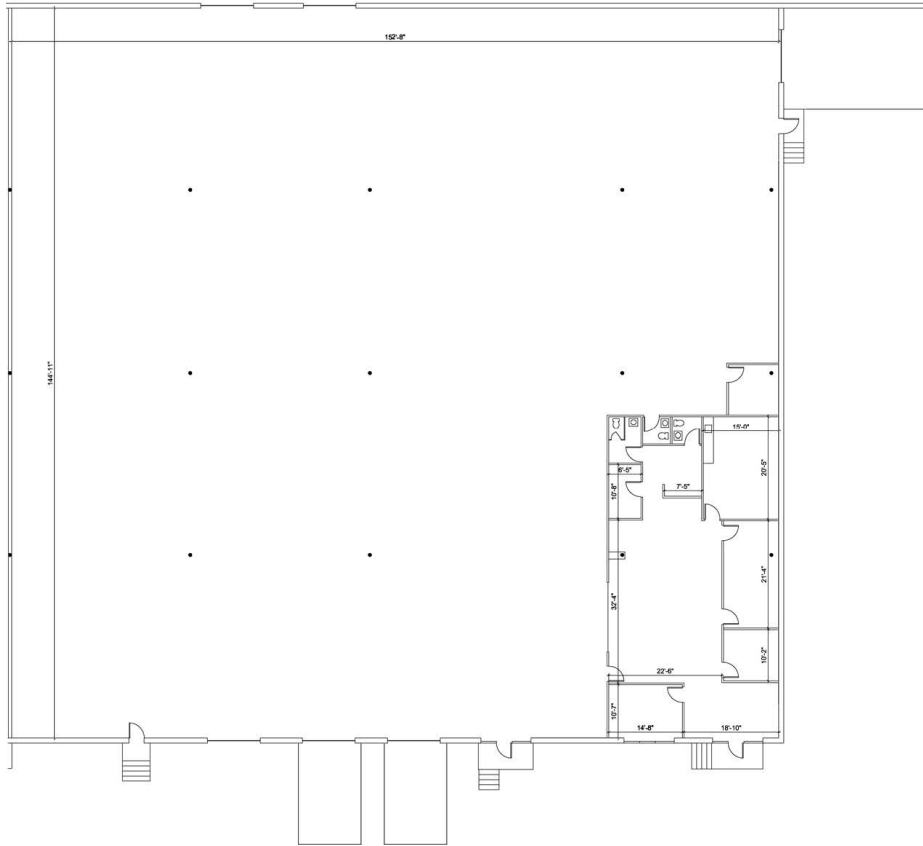
PROPERTY SPECIFICATIONS

Available Space:	20,155 SF
Office Space:	2,274
Total Building Size:	213,638 SF
Submarket:	Northwest Houston
Ceiling Height:	22
Dock High Doors:	1
Ramps:	2
Sprinkler:	NonESFR
Zoning:	N/A



2500 FAIRWAY PARK DRIVE

20,155 SF | FOR LEASE



BROKER CONTACT

David Munson

Boyd Commercial
713.599.3438
dmunson@boydcommercial.net

Greg Barra

Boyd Commercial
713.599.3406
gbarra@boydcommercial.net



OWNER CONTACT

Brad Kluever

Regional Director
312.344.4347
bkluever@firstindustrial.com



1225 North Loop West, Suite 700

Houston, TX 77008

713.681.0885

All information furnished regarding the property for sale, rental or financing is obtained from sources deemed reliable. No representation is made to the accuracy thereof and is submitted subject to errors, omissions, change of price rental or other conditions, prior sale, lease, or financing, or withdrawal without notice. First Industrial Realty Trust, Inc. represents the Seller in this transaction and as such owes all duties and obligations thereto.