

# 2504 FAIRWAY PARK DRIVE

2500-2530 FAIRWAY PARK DRIVE, HOUSTON, TX 77092

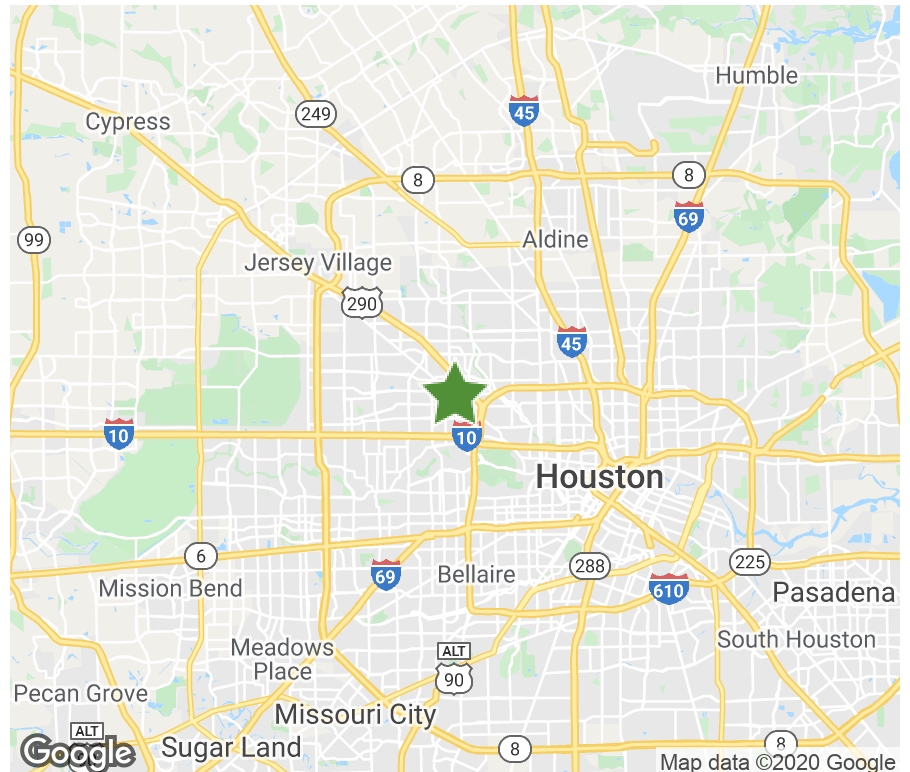


**7,455 SF | FOR LEASE**

The property 2500 - 2530 Fairway Park Drive is a well-located warehouse facility within close proximity to Loop 610. This facility is situated between 290 and Hempstead Highway and is ideal for distribution in Houston's northwest corridor.

## PROPERTY SPECIFICATIONS

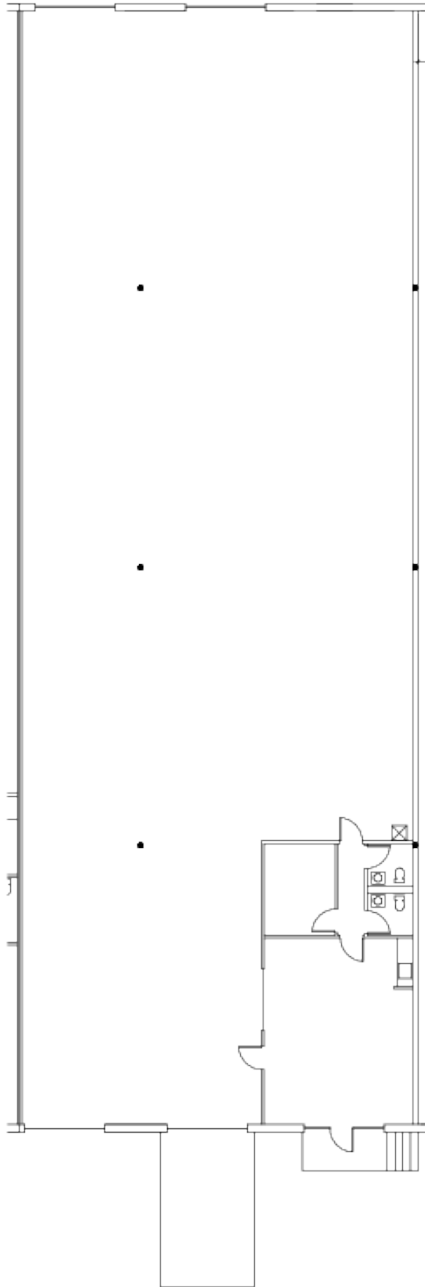
Available Space:	7,455 SF
Office Space:	767
Total Building Size:	213,638 SF
Submarket:	Northwest Houston
Ceiling Height:	22
Dock High Doors:	1
Ramps:	1
Sprinkler:	NonESFR
Zoning:	N/A



# 2504 FAIRWAY PARK DRIVE

7,455 SF | FOR LEASE

## FLOOR PLAN



### BROKER CONTACT

#### David Munson

Boyd Commercial  
713.599.3438  
dmunson@boydcommercial.net

#### Greg Barra

Boyd Commercial  
713.599.3406  
gbarra@boydcommercial.net



### OWNER CONTACT

#### Brad Kluever

Regional Director  
312.344.4347  
bkluever@firstindustrial.com

