

2518 FAIRWAY PARK DRIVE

2500-2530 FAIRWAY PARK DRIVE, HOUSTON, TX 77092



FIRST
INDUSTRIAL
REALTY TRUST



18,360 SF | FOR LEASE

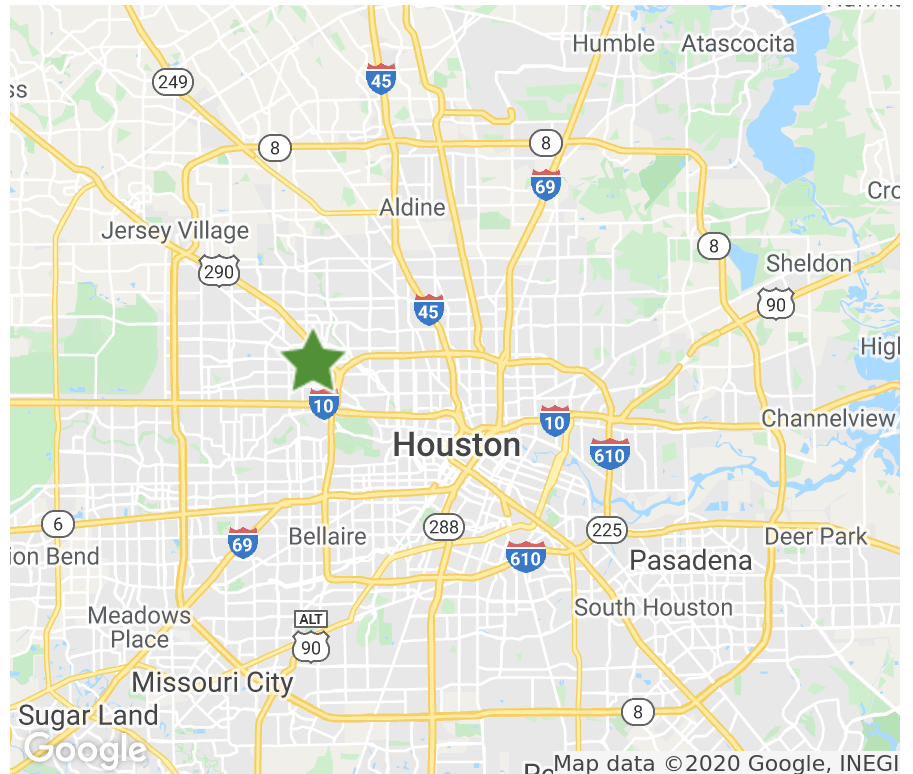
The property 2500 - 2530 Fairway Park Drive is a well-located warehouse facility within close proximity to Loop 610. This facility is situated between 290 and Hempstead Highway and is ideal for distribution in Houston's northwest corridor.

PROPERTY HIGHLIGHTS

Available Space:	18,360 SF
Office Space:	1,268 SF
Submarket:	Northwest Houston
Ceiling Height:	22'
Dock High Doors:	4
Sprinkler:	NonESFR

SPACE HIGHLIGHTS

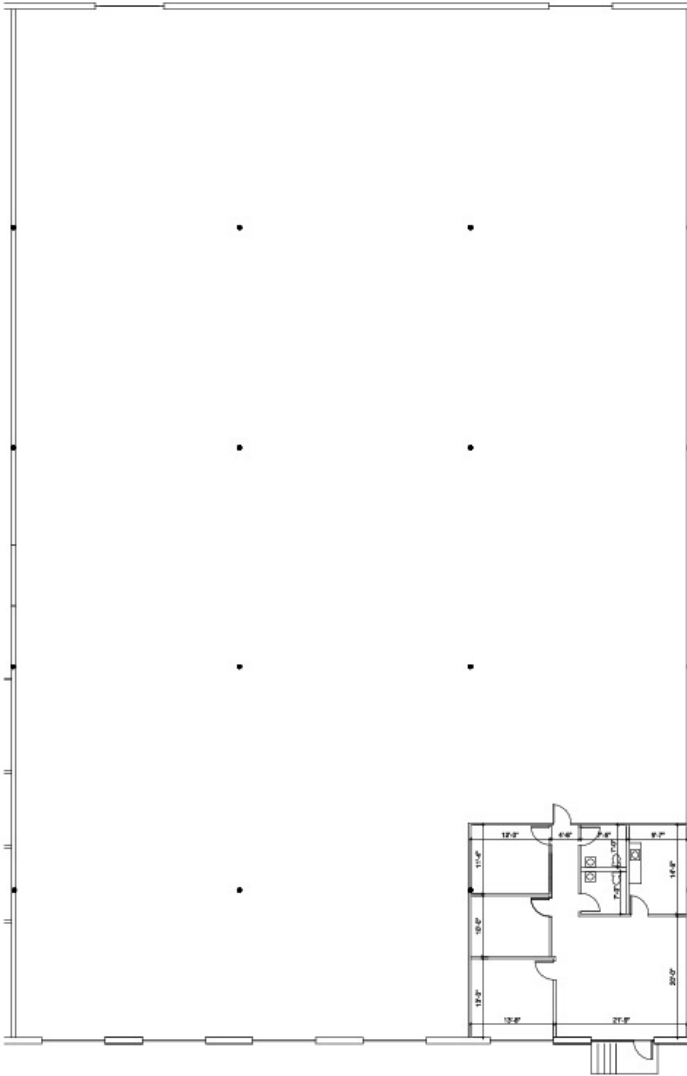
- Move-In Ready
- Ventilation Fan / Warehouse
- LED lighting / Warehouse



2518 FAIRWAY PARK DRIVE

18,360 SF | FOR LEASE

FLOOR PLAN



BROKER CONTACT

David Munson, SIOR

Boyd Commercial
713.599.3438
dmunson@boydcommercial.net

Greg Barra

Boyd Commercial
713.599.3406
gbarra@boydcommercial.net



OWNER CONTACT

Brad Kluever

Regional Director
312.344.4347
bkluever@firstindustrial.com

