

# 6550 LONG POINT, SUITE 204

HOUSTON, TX 77055

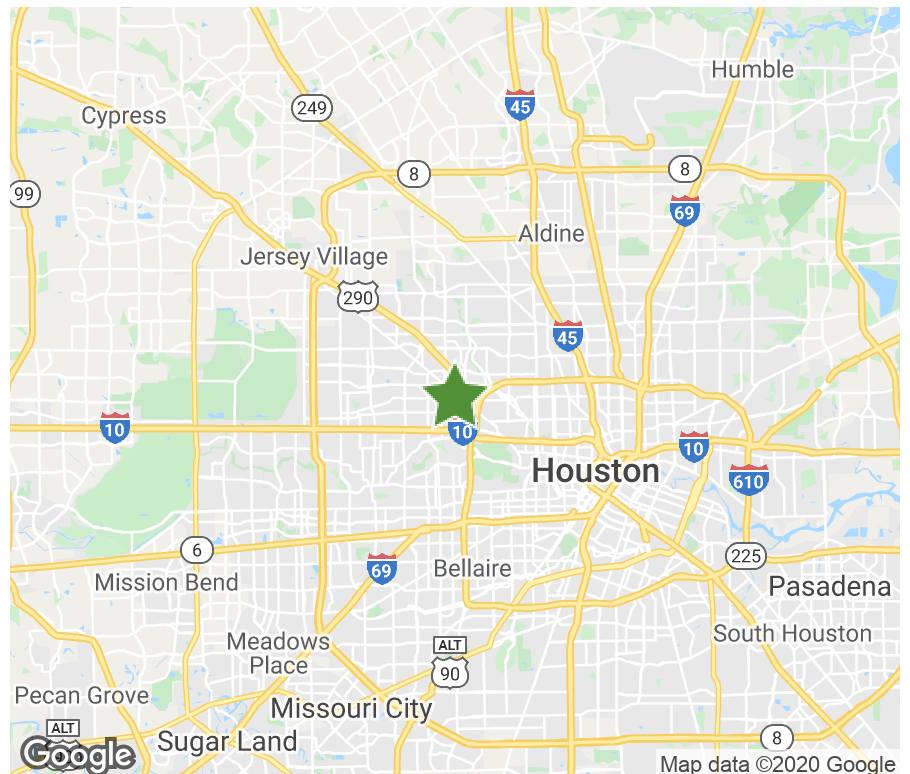


**23,000 SF | FOR LEASE**

The property 6550 Long Point is a well located warehouse facility in Houston's Northwest submarket. This building is a dock high, front load facility in close proximity to the 610 Loop, Highway 290, Interstate-10 and Hempstead Highway.

## PROPERTY SPECIFICATIONS

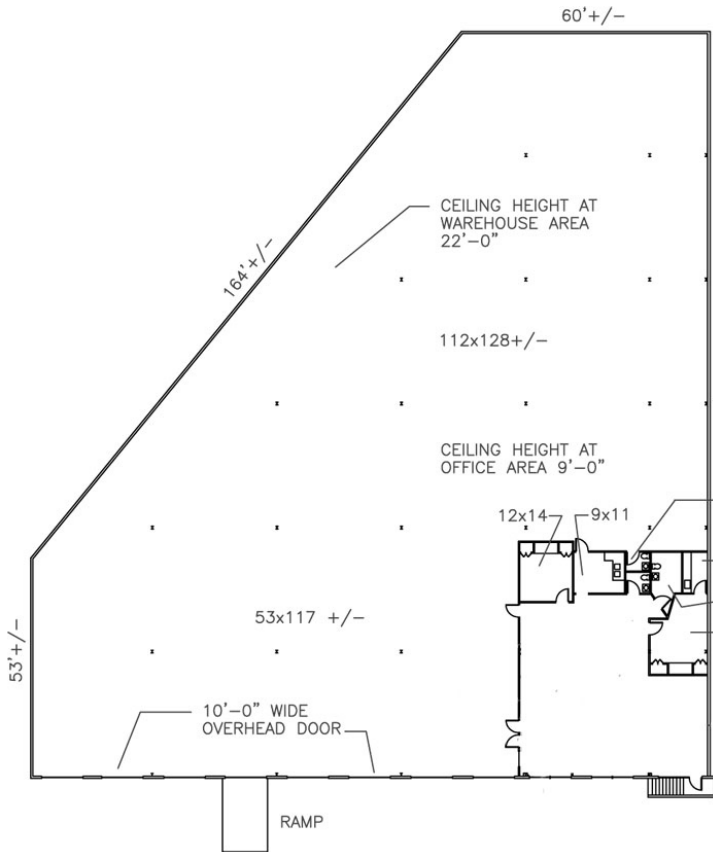
Available Space:	23,000 SF
Office Space:	2,540
Total Building Size:	97,700 SF
Submarket:	Northwest Houston
Ceiling Height:	20
Dock High Doors:	7
Ramps:	1
Sprinkler:	NonESFR



# 6550 LONG POINT, SUITE 204

23,000 SF | FOR LEASE

## FLOOR PLAN



**SUITE 204**  
23,000 S.F. TOTAL / 2,540 S.F. OFFICE AREA

### BROKER CONTACT

#### David Munson

Boyd Commercial  
713.599.3438  
dmunson@boydcommercial.net

#### Greg Barra

Boyd Commercial  
713.599.3406  
gbarra@boydcommercial.net



### OWNER CONTACT

#### Brad Kluever

Regional Director  
312.344.4347  
bkluever@firstindustrial.com

