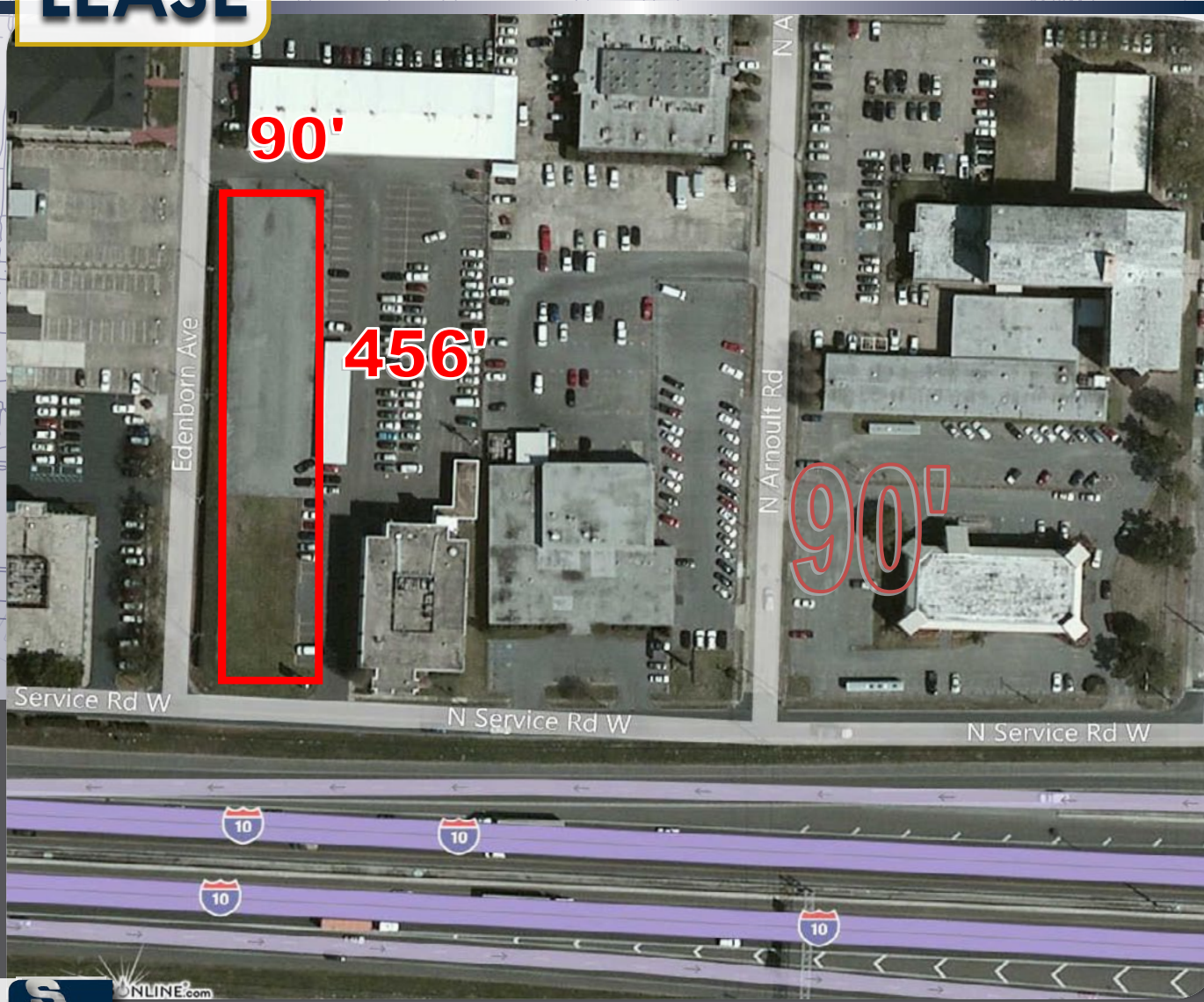


# FOR LEASE

Metairie, LA  
N. I-10 Service Rd. & Edenborn



## FOR GROUND LEASE OR BUILD TO SUIT

### PROPERTY HIGHLIGHTS

- Great Interstate Exposure
- Lot Size 90' x 456'
- 41,040 SF
- High visibility location at the corner of North I-10 Service Rd. and Edenborn (between Causeway and Clearview)
- Easy access to Causeway Bridge, and New Orleans CBD via I-10
- **LEASE RATE: \$3.50 per square foot net on ground/Land area**
- **ZONING:** BC - 2
- Under this zoning, possible uses include: general retail, office, bank, hotel, showroom, clinic (medical, dental, chiropractic), veterinary clinic

The information contained herein has been obtained from sources we deem reliable; however SRSA Commercial Real Estate, Inc. makes no guarantees, warranties, or representations as to the accuracy or completeness thereof. The presentation of this property is submitted subject to errors, omissions, prior sale or lease, changes of conditions or withdrawal without notice. Buyer or Tenant to verify all information to Buyer's or Lessee's satisfaction.



SRSA COMMERCIAL  
REAL ESTATE

Stev Reisig  
p: (504) 293-0349 • sreisig@srsa-realestate.com

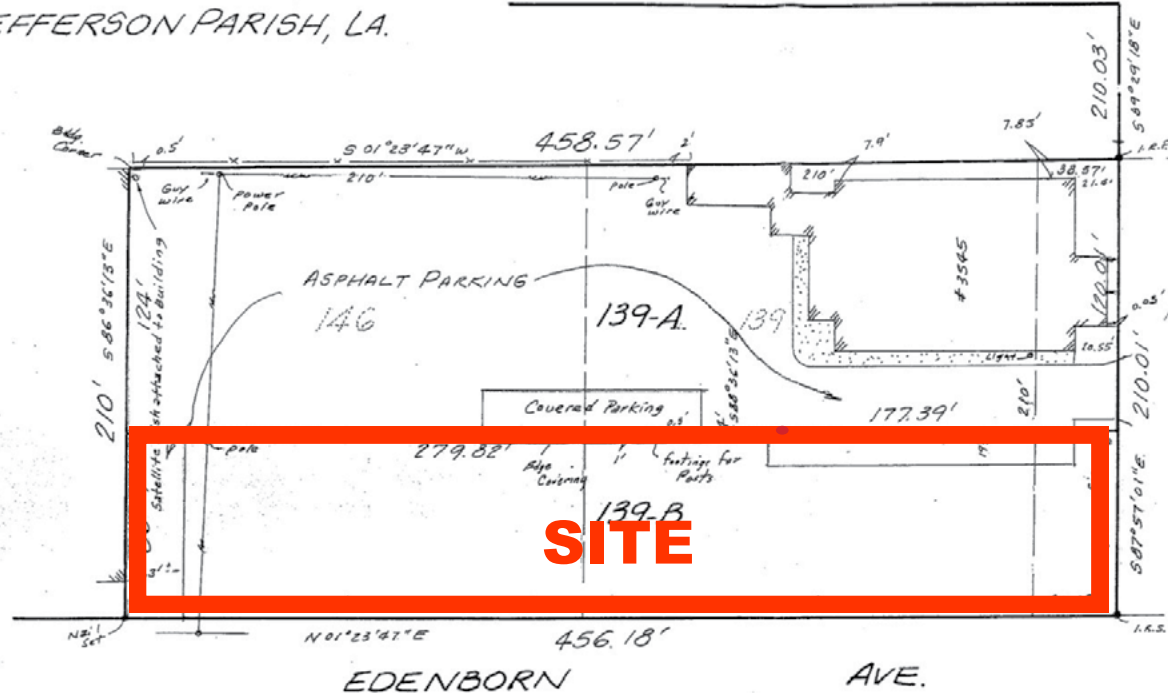
# FOR LEASE

N. I 10 Service Rd. & Edenborn Metairie, LA

HESSMER FARMS, SEC. B  
JEFFERSON PARISH, LA.

N. ARNOULT RD.

VETERANS MEMORIAL BLVD. SIDE



N. SERVICE RD.  
INTERSTATE HWY 10



CONTACT:

Steve Reisig  
p: (504) 293-0349  
sreisig@srsa-realestate.com



Scan this image with your mobile device to view More Information

4/1114

	1 mile	3 mile	5 mile
2010 Population	25,098	122,620	272,105
Households	12,230	55,545	113,039
Avg. HH Income	46,605	59,215	57,215

Bilbert, Kelly & Couturie, Inc., Surveying & Engineering  
2121 N. Causeway Blvd., Metairie LA 70001



SRSA COMMERCIAL  
REAL ESTATE

The information contained herein has been obtained from sources we deem reliable; however SRSA Commercial Real Estate, Inc. makes no guarantees, warranties, or representations as to the accuracy or completeness thereof. The presentation of this property is submitted subject to errors, omissions, prior sale or lease, changes of conditions or withdrawal without notice. Buyer or Tenant to verify all information to Buyer's or Tenant's satisfaction.

