

WOODLAND PARK BURR RIDGE 16W277-345 83RD ST. | BURR RIDGE, IL

AVAILABLE FOR LEASE

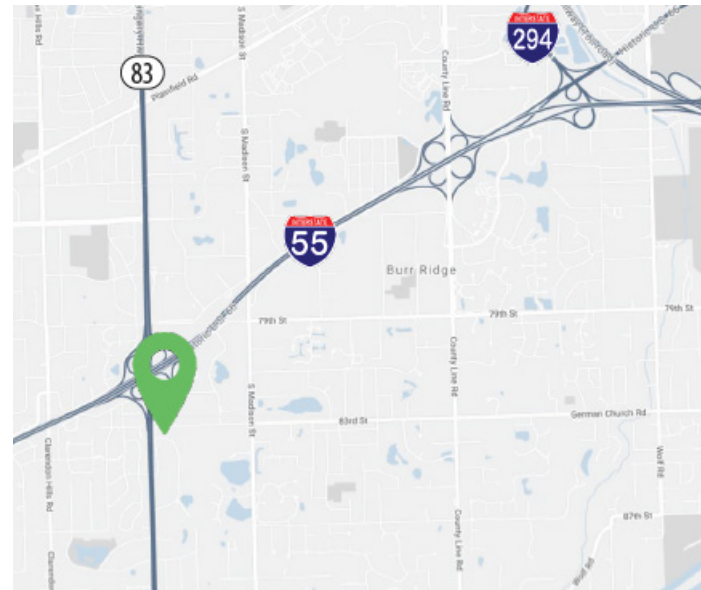
**3-Year Pricing Sale
24% Savings***

HIGHLIGHTS

- > 8 building, single story office complex located in a professional park setting
- > Continuous window lines
- > Private entrances into each suite with private bath rooms
- > 24hr access with individually controlled HVAC
- > Turn-key, move in ready suites
- > Abundant parking throughout complex
- > On site management - family owned & managed
- > Ultimate flexibility in square footage and floor plans
- > Ideal location right off I-55 with full interchange at Rte 83
- > Completely remodeled tenant improvements

AVAILABLE

Building	Suite	Total SF	Notes
277	B	1,832	Remodeled
277	B-1	1,295	Remodeled
277	B-2	537	Remodeled
345	B	1,316	Upgraded Finishes



PRICING

- > ~~\$19.50~~ **\$17.95 PSF Gross**
 - > Taxes & operating expenses included in price
- *Minimum 3 year lease – sale ends 6/1/21**



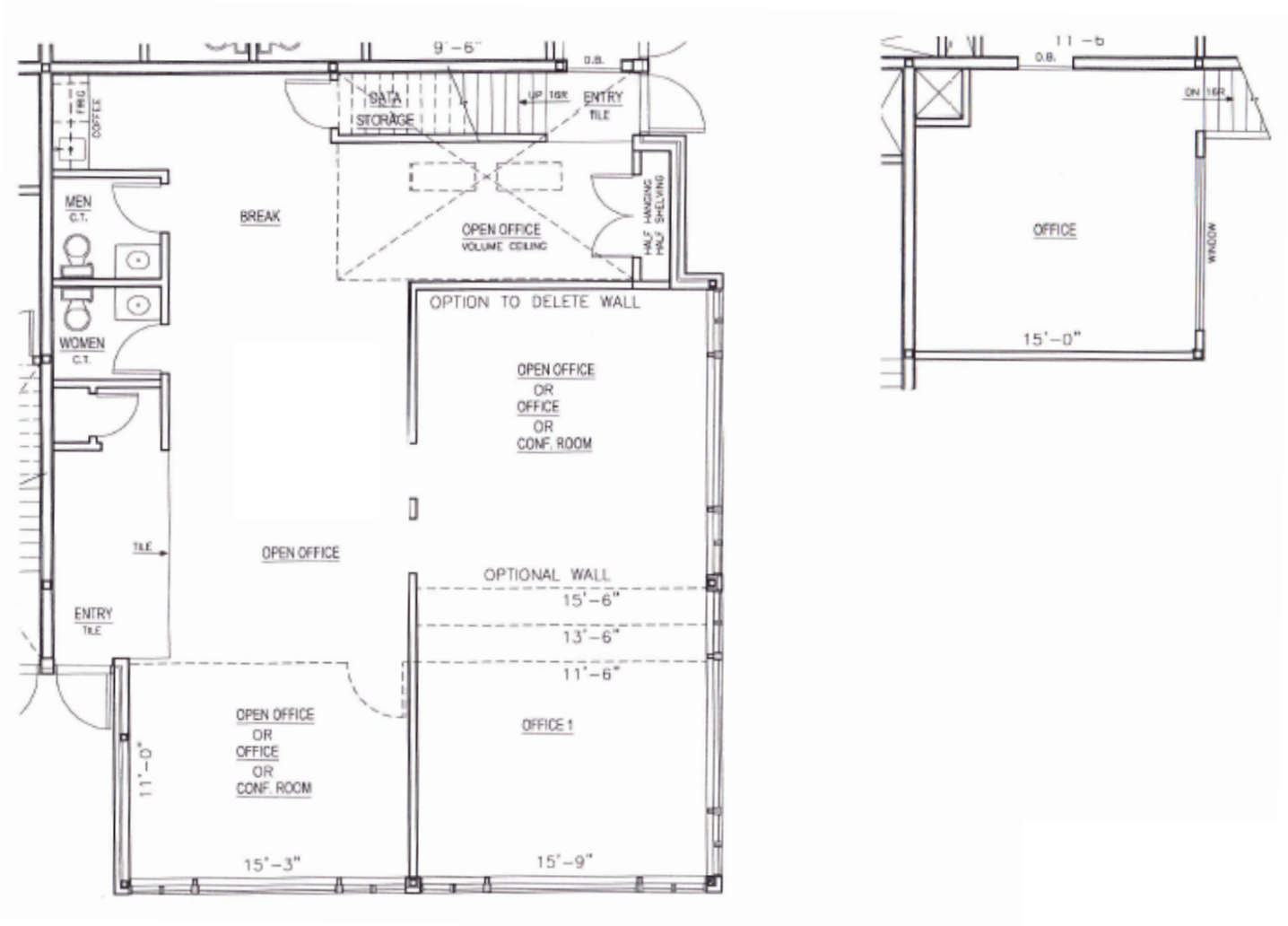
RAWLY LANTZ
630.729.7944
rlantz@cawleychicago.com

JUSTIN HARRIS
630.810.1897
jharris@cawleychicago.com



WOODLAND PARK BURR RIDGE 16W277-345 83RD ST. | BURR RIDGE, IL

BUILDING 277, SUITE B | 1,832 SF



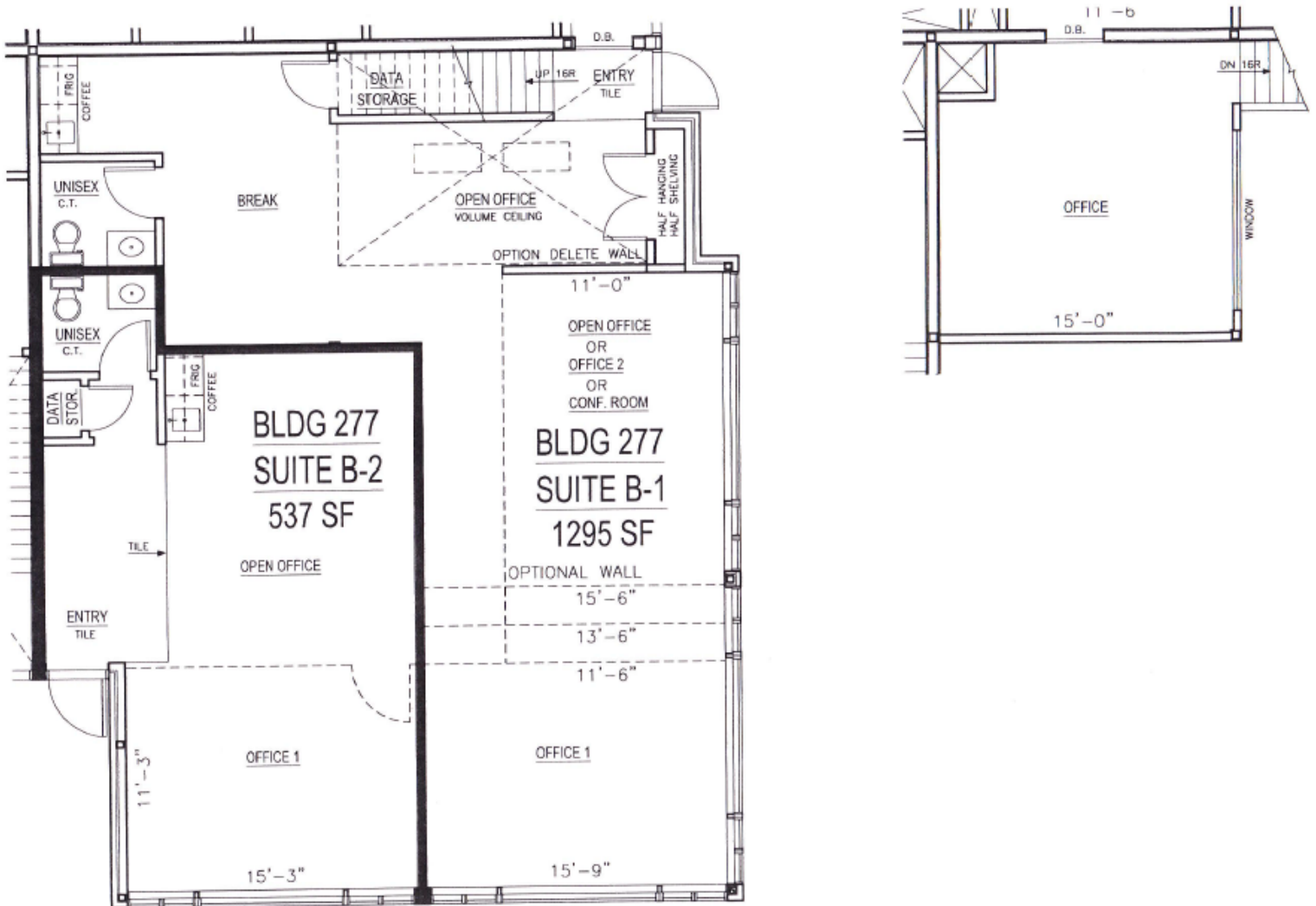
RAWLY LANTZ
630.729.7944
rlantz@cawleychicago.com

JUSTIN HARRIS
630.810.1897
jharris@cawleychicago.com



WOODLAND PARK BURR RIDGE 16W277-345 83RD ST. | BURR RIDGE, IL

BUILDING 277, SUITE B-2 | 537 SF



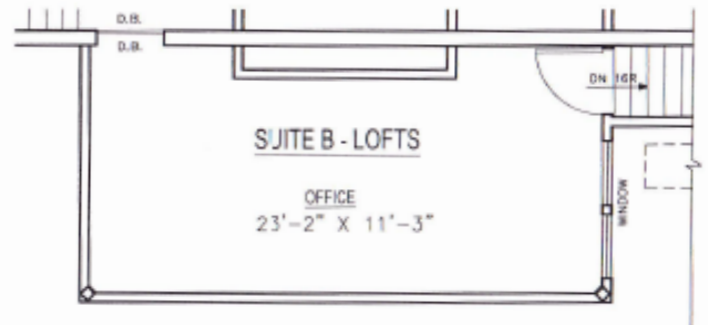
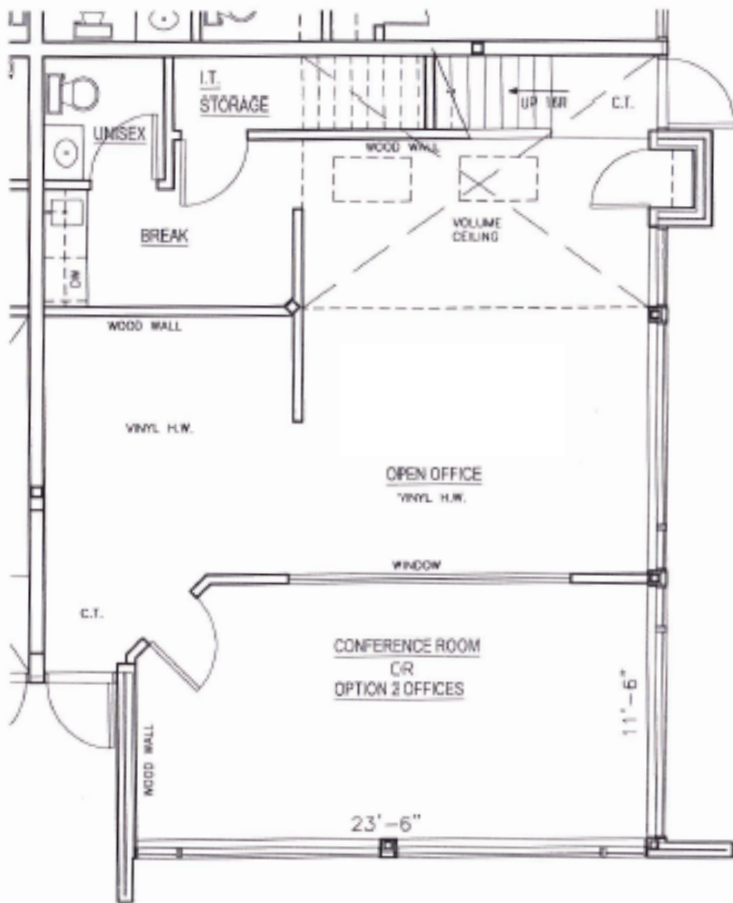
RAWLY LANTZ
 630.729.7944
 rlantz@cawleychicago.com

JUSTIN HARRIS
 630.810.1897
 jharris@cawleychicago.com



WOODLAND PARK BURR RIDGE 16W277-345 83RD ST. | BURR RIDGE, IL

BUILDING 345, SUITE B | 1,316 SF



RAWLY LANTZ
630.729.7944
rlantz@cawleychicago.com

JUSTIN HARRIS
630.810.1897
jharris@cawleychicago.com

