

Available for Lease



Column Office Park

10 E. 22nd Street | Lombard, Illinois

Highlights

- Three story office building
- Full building is wifi enabled
- Day porter on-site
- Brand new HVAC installed
- Move in ready suites available
- On-site training facility available
- Tenant lounge including ping pong tables & tv's
- Close proximity to numerous restaurants, hotels, shopping, fitness centers etc.
- Easy access to I-355 & I-88

Details

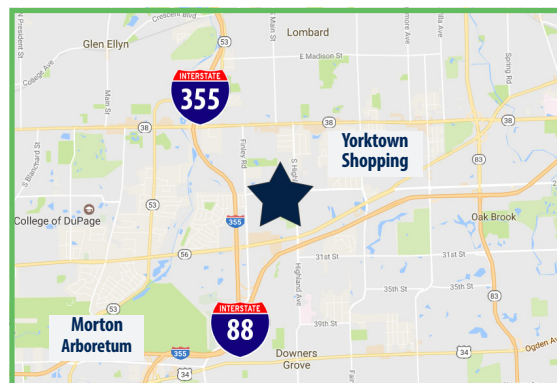
- Total Building: **35,290 SF**
- Stories: **Three**
- Parking: **+/- 142 car spots**

Pricing

- Lease Price: **\$15.25 PSF Gross**

Available

- Suite 101: **2,000 SF**
- Suite 212: **900 SF**
- Suite 214: **750 SF**



For More Information, Contact:

Rawly Lantz

D: 630.729.7944

M: 630.810.0300 Ext. 116

rlantz@cawleychicago.com

Justin Harris

D: 630.810.1897

M: 630.810.0300 Ext. 177

jharris@cawleychicago.com

Interior Photos



For More Information, Contact:

Rawly Lantz

D: 630.729.7944

M: 630.810.0300 Ext. 116

rlantz@cawleychicago.com

Justin Harris

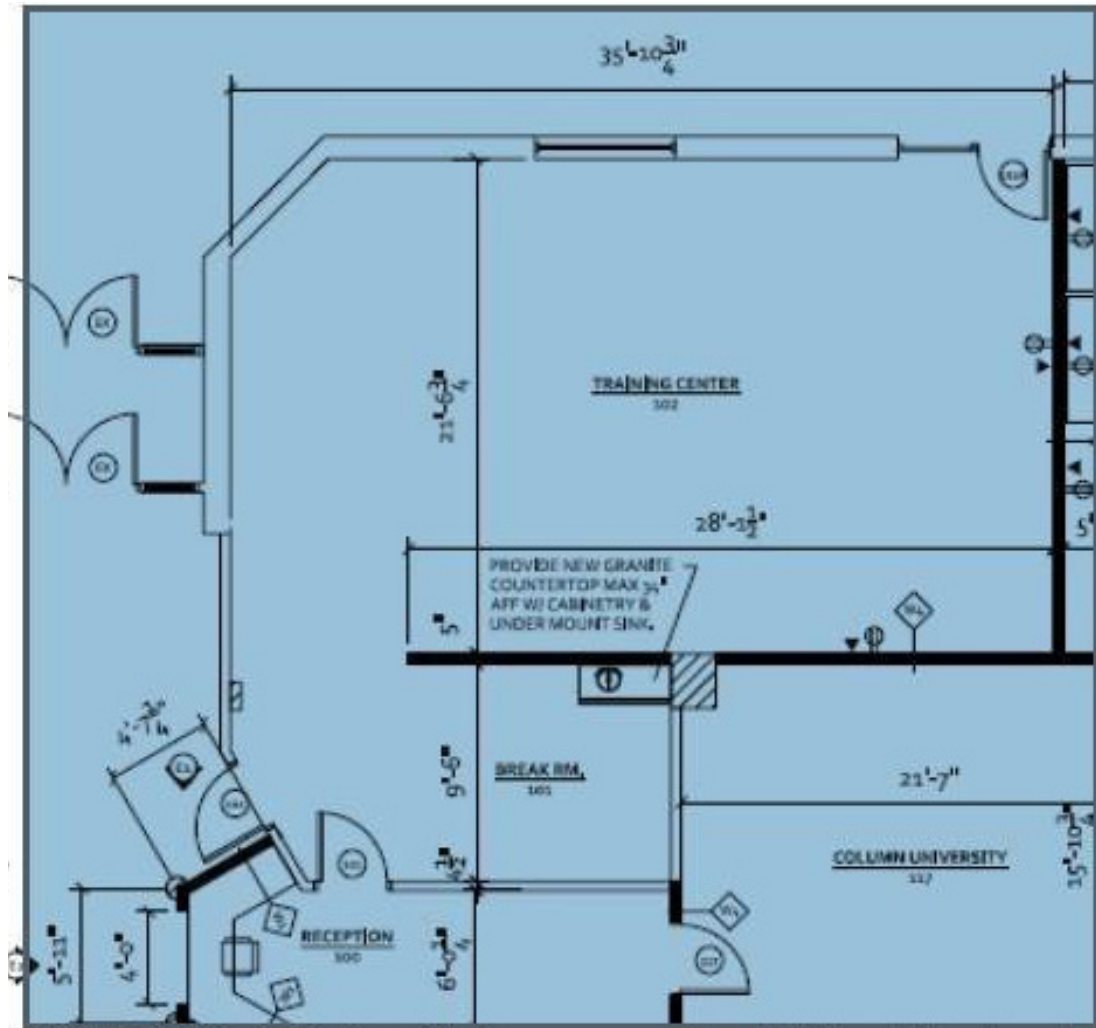
D: 630.810.1897

M: 630.810.0300 Ext. 177

jharris@cawleychicago.com

Layout

Suite 101 | 2,000 SF



For More Information, Contact:

Rawly Lantz

D: 630.729.7944

M: 630.810.0300 Ext. 116

rlantz@cawleychicago.com

Justin Harris

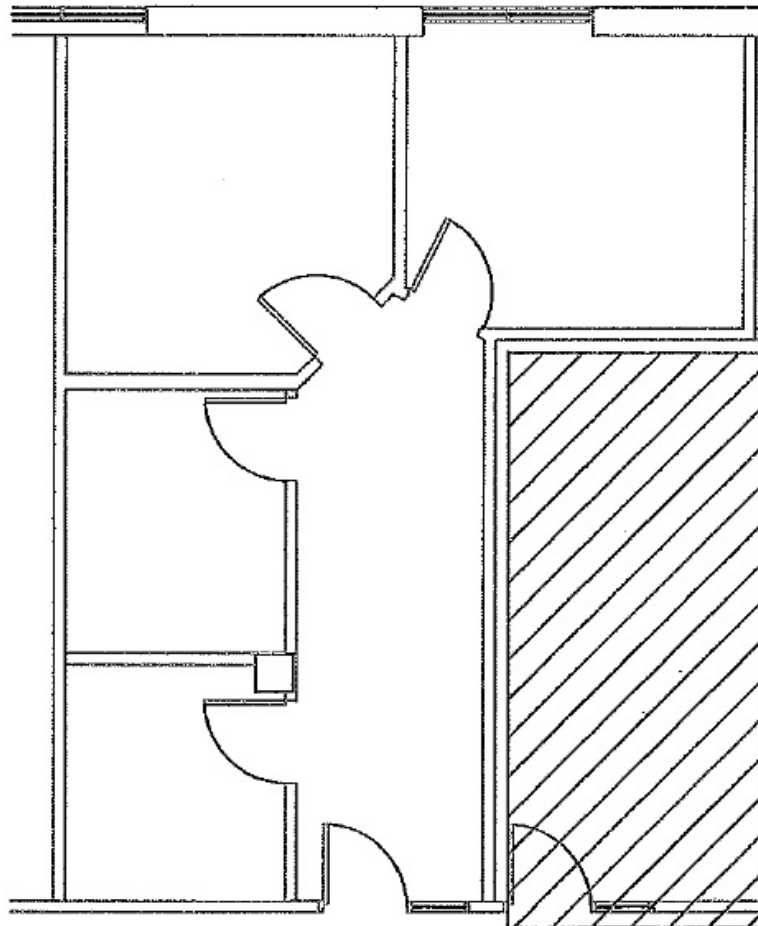
D: 630.810.1897

M: 630.810.0300 Ext. 177

jharris@cawleychicago.com

Layout

Suite 212 | 900 SF



For More Information, Contact:

Rawly Lantz

D: 630.729.7944

M: 630.810.0300 Ext. 116

rlantz@cawleychicago.com

Justin Harris

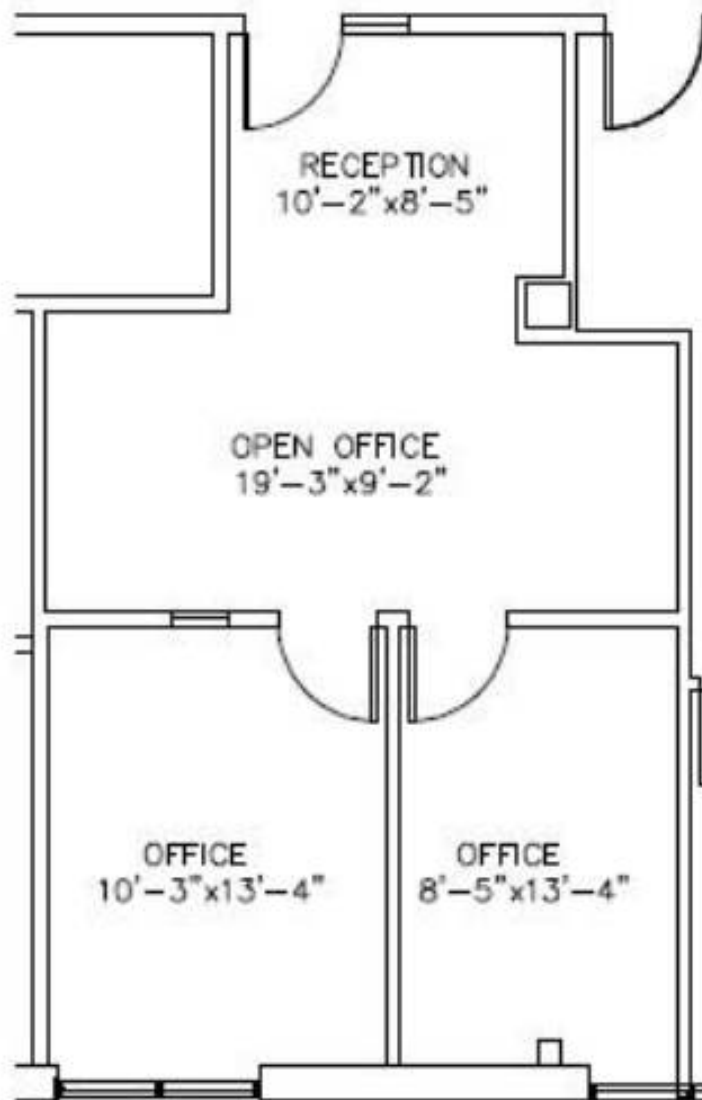
D: 630.810.1897

M: 630.810.0300 Ext. 177

jharris@cawleychicago.com

Layout

Suite 214 | 750 SF



For More Information, Contact:

Rawly Lantz

D: 630.729.7944

M: 630.810.0300 Ext. 116

rlantz@cawleychicago.com

Justin Harris

D: 630.810.1897

M: 630.810.0300 Ext. 177

jharris@cawleychicago.com