

# Development Land For Sale



## Call For Offers

# Due 09-30-2020 at 5 PM MDT

± 92 Acres 2210 E Hubbard Rd., Kuna, ID 83634

## Property Information

<b>Address:</b>	2210 E Hubbard Rd., Kuna, ID 83634
<b>Land Size:</b>	± 92 acres Seller will be keeping home and +/- 5 acres at the SW corner of the property
<b>Comp Plan:</b>	Low Density Residential
<b>Asking Price:</b>	Call For Offers
<b>Terms:</b>	See Page 4

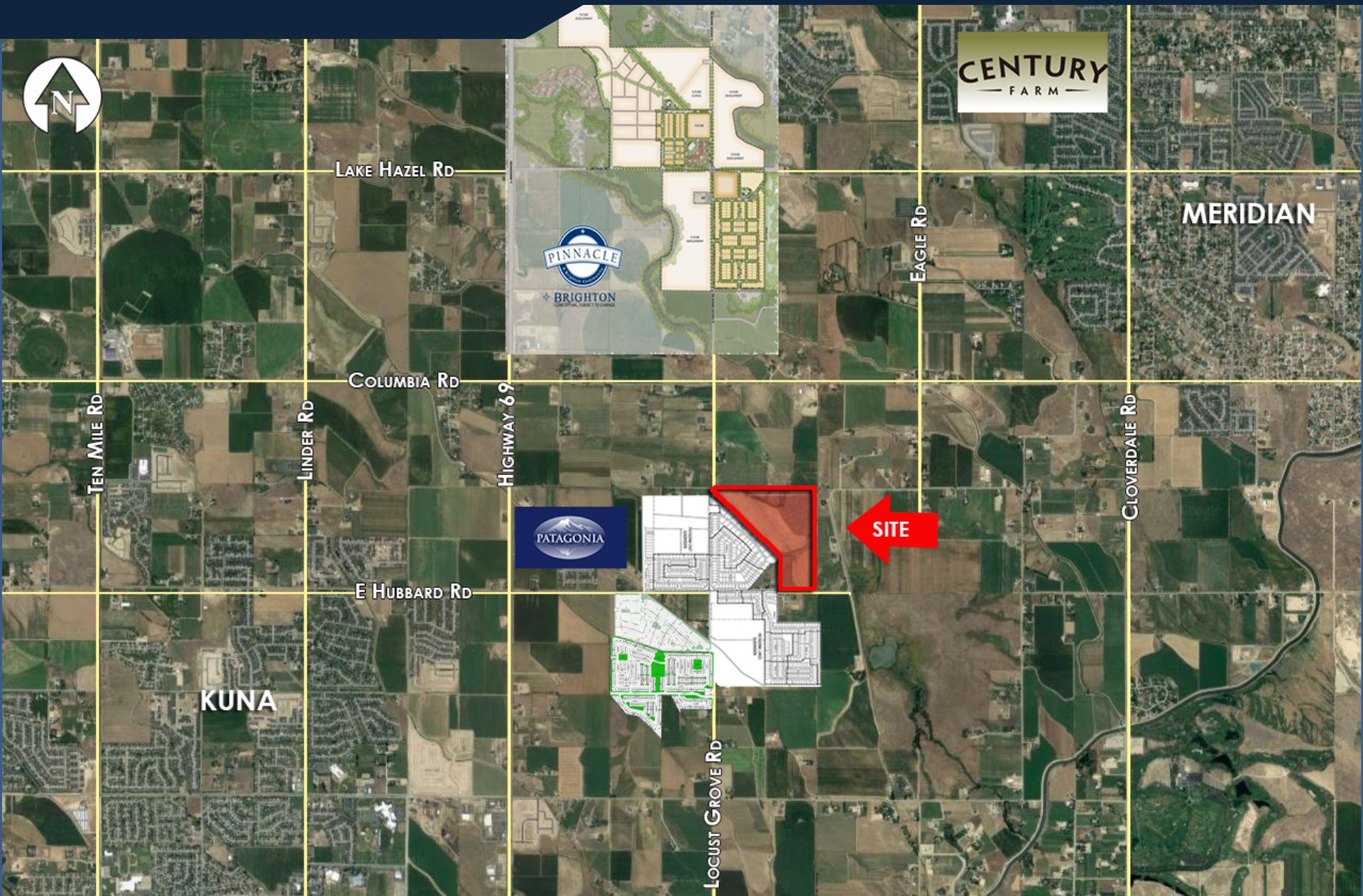
## HIGHLIGHTS

- Well situated between Meridian and Kuna. Quick access to both Eagle Road and Highway 69 (Meridian Road)
- Located in the city limits of Kuna
- Fantastic opportunity for a larger development
- Several residential development projects already underway nearby

# DEVELOPMENT MAP

± 92 Acres 2210 E Hubbard Rd., Kuna, ID 83634

**MB**  
**MARK BOTTLES**  
REAL ESTATE SERVICES



This information contained herein is from sources deemed reliable. We have no reason to doubt its accuracy but do not guarantee it. It is the responsibility of the person reviewing this information to independently verify it. This package is subject to change, prior to sale or complete withdrawal. Maps are provided for location purposes only. The pictures cannot be reproduced in whole or in part without prior written consent.

## Terms

### **Submission Terms**

- All offers are due on or before **September 30, 2020 at 5 p.m. MDT.** (the "Expiration Date").

### **Acceptance Terms**

- Any and all offers may be accepted, rejected, or negotiated by Owner.
- If an acceptable offer is received in advance of the Expiration Date, the Seller has the right to accept the offer.

For more information please contact:

**John Bottles**

Cell: 208.994.2255

Direct: 208.947.1118

Fax: 208.377.0035

[john@markbottles.com](mailto:john@markbottles.com)



**MARK BOTTLES**  
**REAL ESTATE SERVICES**  
839 S. Bridgeway Place  
Eagle, Idaho 83616