

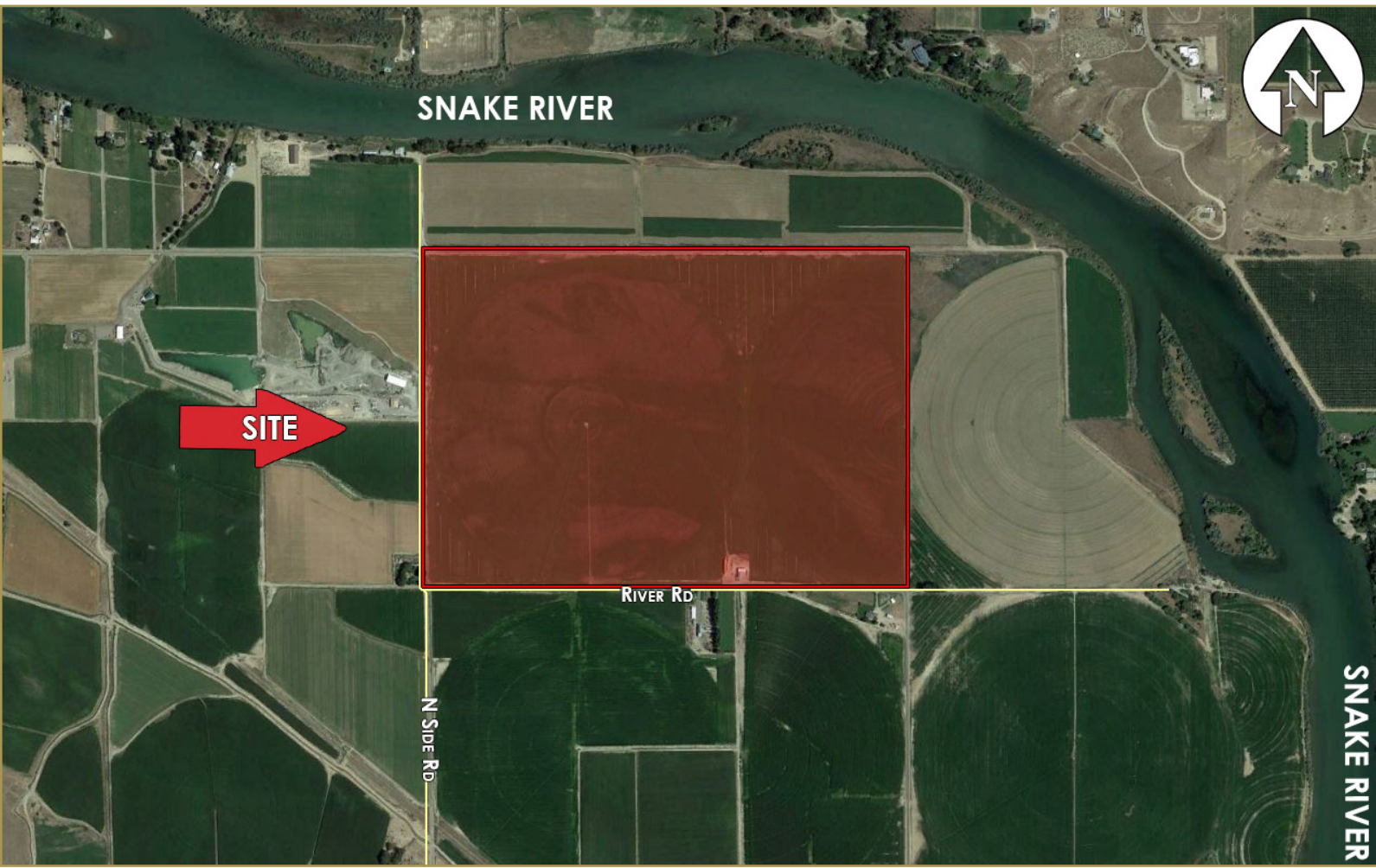


MARK BOTTLES
REAL ESTATE SERVICES

Snake River Farm Land

NEC N Side Rd and River Rd

Homedale, Idaho



PROPERTY INFORMATION:

Location:	W on Simplot Blvd, S on U.S. 95 Continue on State Hwy 19, N on Side Rd., 3 miles and property is on the left
Acres:	± 233.07
Zoning:	AG
Price:	\$11,000/acre

COMMENTS:

- Great farm land close to Snake River
- One full pivot, one half pivot
- Fantastic soil for farming
- Approximately 4 mile drive from Homedale
- One contiguous field, approximately 2,640' x 3,800'
- Only ± 60 minutes from Boise

JOHN BOTTLES

Cell: (208) 994-2255
Office: (208) 947-1118
john@markbottles.com

839 S. Bridgeway Place
Eagle, Idaho
P(208) 377-5700 F(208) 377-0035
www.markbottles.com

This information, while not guaranteed, is from sources we believe to be reliable. This data is subject to price change, corrections, errors, omissions, prior sale, and/or withdrawal.

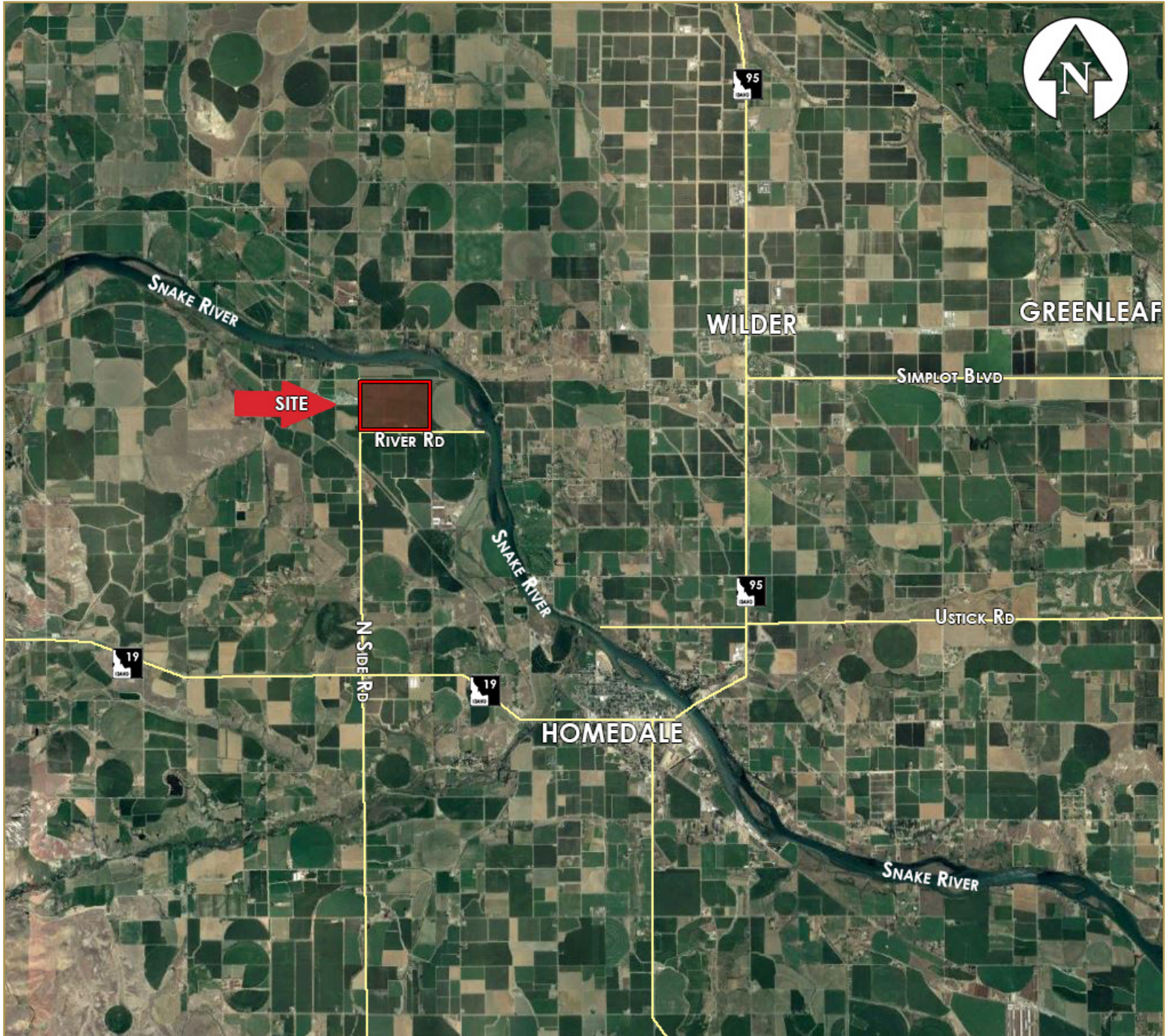


MARK BOTTLES
REAL ESTATE SERVICES

Snake River Farm Land

NEC N Side Rd and River Rd
Homedale, Idaho

City Aerial:



JOHN BOTTLES

Cell: (208) 994-2255
Office: (208) 947-1118
john@markbottles.com

839 S. Bridgeway Place
Eagle, Idaho
P(208) 377-5700 F(208) 377-0035
www.markbottles.com



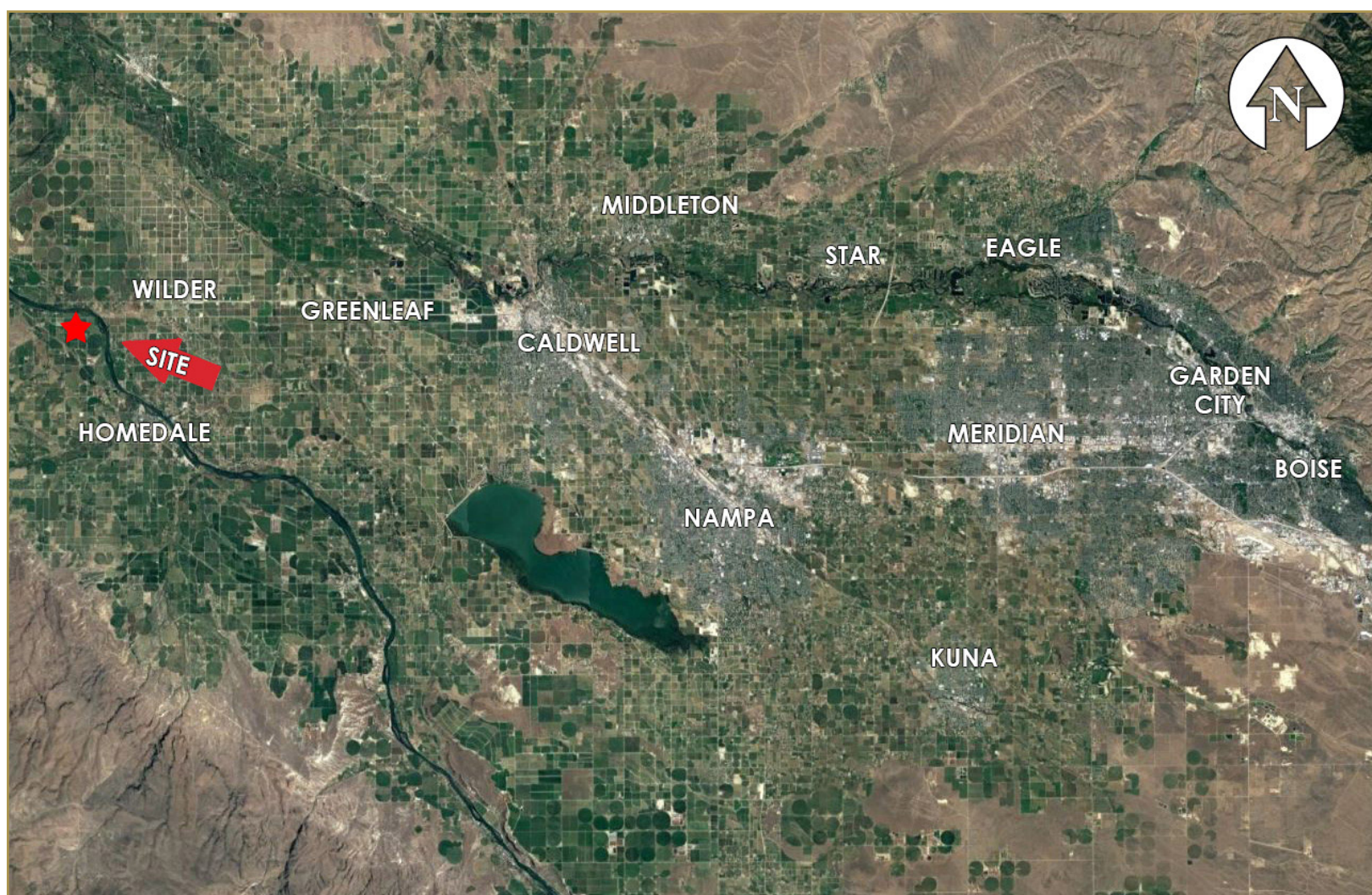
MARK BOTTLES
REAL ESTATE SERVICES

Snake River Farm Land

NEC N Side Rd and River Rd

Homedale, Idaho

Valley Aerial:



JOHN BOTTLES

Cell: (208) 994-2255
Office: (208) 947-1118
john@markbottles.com

839 S. Bridgeway Place
Eagle, Idaho

P(208) 377-5700 F(208) 377-0035

www.markbottles.com

This information, while not guaranteed, is from sources we believe to be reliable. This data is subject to price change, corrections, errors, omissions, prior sale, and/or withdrawal.