

445 CAMINO DEL REY

LOS LUNAS, NM 87031

Kelly Schmidt, MICP
Senior Advisor
O: 505.417.1214
kelly.schmidt@svn.com

Walt Arnold, CCIM, SIOR
Managing Director
O: 505.269.9358
walt.arnold@svn.com

Property Summary



OFFERING SUMMARY

Available SF:	18,000 SF
Lease Rate:	\$17.00 SF/yr (Full Service)
Lot Size:	2.55 Acres
Building Size:	18,000 SF
Zoning:	C-1
Market:	Los Lunas

PROPERTY OVERVIEW

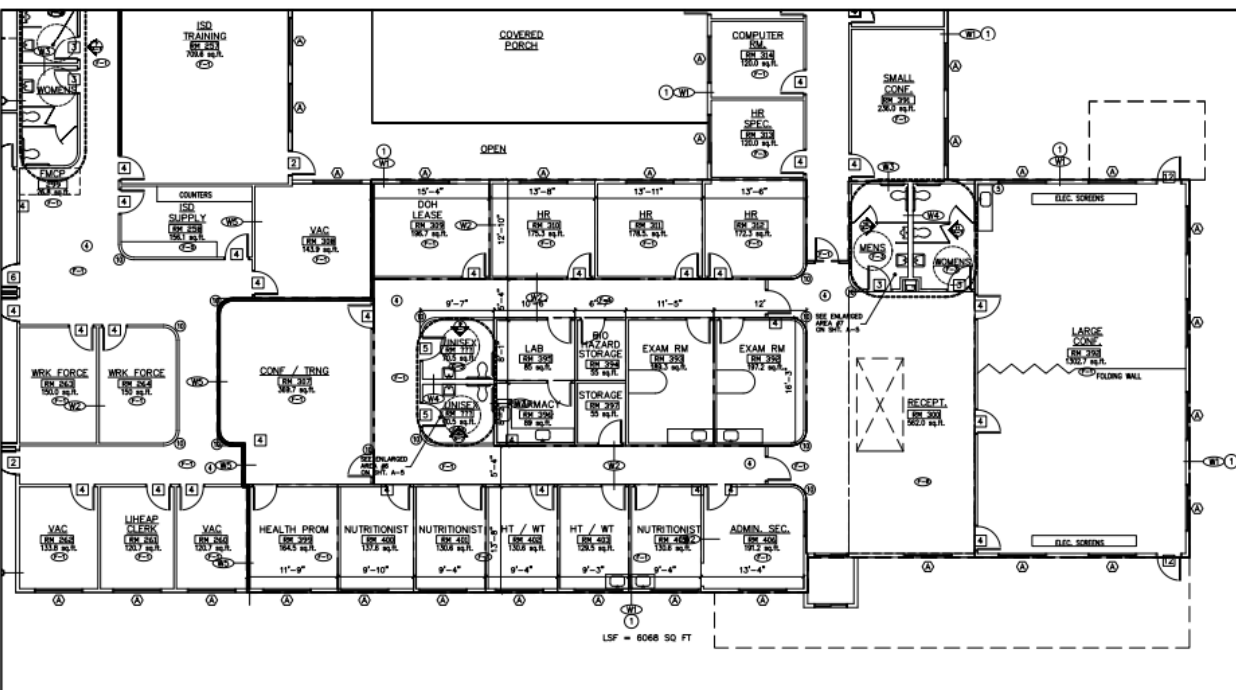
Office space available in the heart of Los Lunas. This property is professionally managed and in close proximity to many amenities.

PROPERTY HIGHLIGHTS

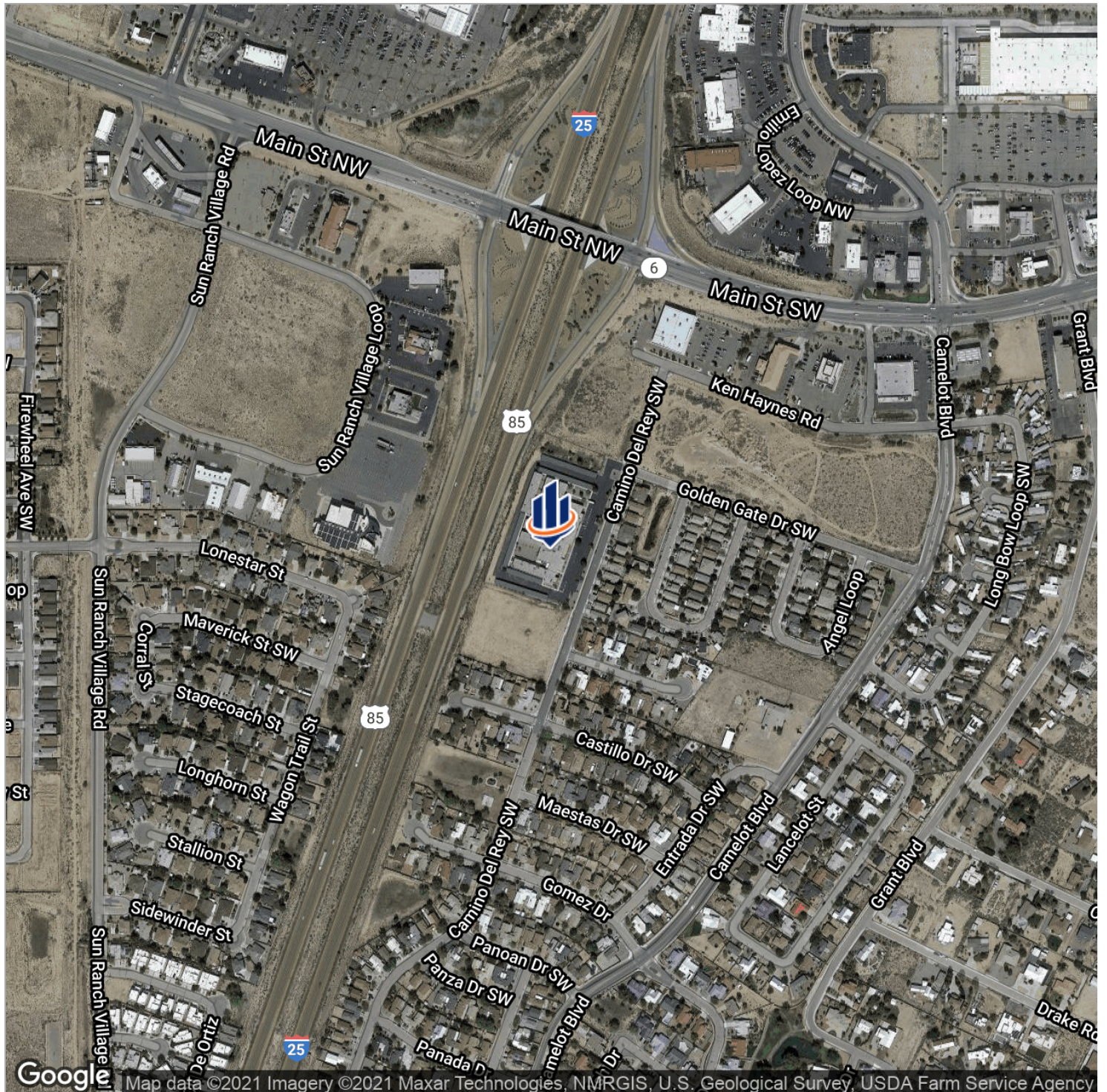
- Office Space in Los Lunas
- Professionally Managed
- Close Proximity to Amenities
- Near Intersection of Hwy 314 and Hwy 6
- 3.7/1000 parking



Floor Plans



Location Maps



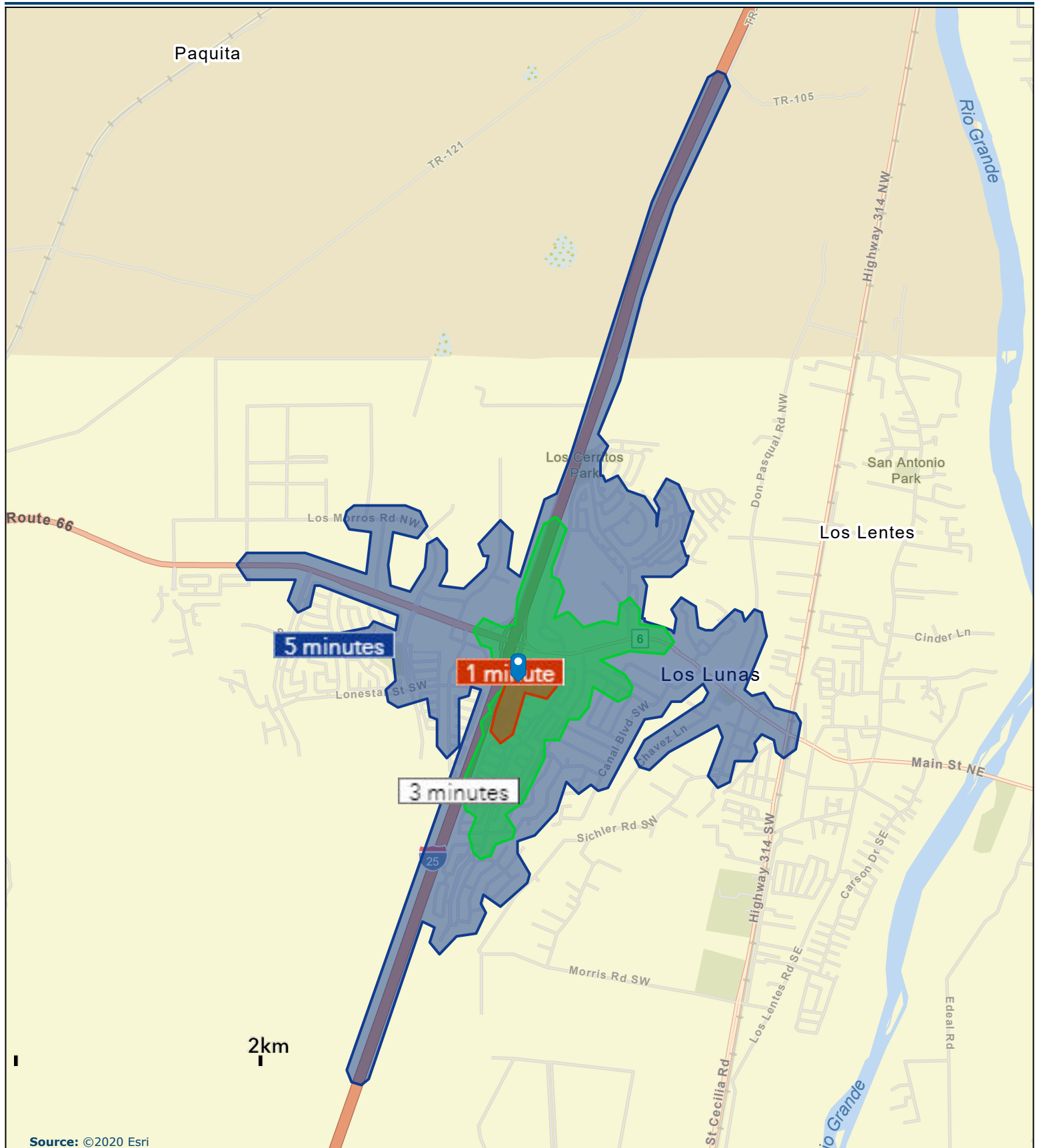
3D Aerials



445 CAMINO DEL REY SW, LOS LUNAS, NM 87031

SVN | Walt Arnold Commercial Brokerage, Inc. | Page 5

The information presented here is deemed to be accurate, but it has not been independently verified. We make no guarantee, warranty or representation. It is your responsibility to independently confirm accuracy and completeness. All SVN® offices are independently owned and operated.



KEY FACTS

196

Population



2.8

Average Household Size

37.9

Median Age

\$50,911

Median Household Income

EDUCATION

14%

No High School Diploma



30%

High School Graduate



36%

Some College



20%

Bachelor's/Grad/Prof Degree

BUSINESS



0

Total Businesses



0

Total Employees

EMPLOYMENT



White Collar

57%



Blue Collar

23%



Services

20%

14.0%

Unemployment Rate

INCOME



\$50,911

Median Household Income



\$23,389

Per Capita Income



\$44,245

Median Net Worth

Households By Income

The largest group: \$50,000 - \$74,999 (23.9%)

The smallest group: \$200,000+ (1.4%)

Indicator	Value	Difference	
<\$15,000	18.3%	+2.7%	
\$15,000 - \$24,999	9.9%	-3.1%	
\$25,000 - \$34,999	11.3%	-0.9%	
\$35,000 - \$49,999	9.9%	-3.5%	
\$50,000 - \$74,999	23.9%	+6.3%	
\$75,000 - \$99,999	14.1%	+2.3%	
\$100,000 - \$149,999	8.5%	-1.7%	
\$150,000 - \$199,999	4.2%	-1.0%	
\$200,000+	1.4%	+0.4%	

Bars show deviation from
Valencia County

KEY FACTS

1,895

Population



2.5

Average Household Size

37.9

Median Age

\$50,841

Median Household Income

EDUCATION

14%

No High School Diploma



30%

High School Graduate



37%

Some College



20%

Bachelor's/Grad/Prof Degree

BUSINESS



6

Total Businesses



51

Total Employees

EMPLOYMENT



White Collar

55%



Blue Collar

23%



Services

22%

13.8%

Unemployment Rate

INCOME



\$50,841

Median Household Income



\$23,366

Per Capita Income



\$45,353

Median Net Worth

Households By Income

The largest group: \$50,000 - \$74,999 (23.5%)

The smallest group: \$200,000+ (0.9%)

Indicator	Value	Difference	
<\$15,000	18.6%	+3.0%	
\$15,000 - \$24,999	9.9%	-3.1%	
\$25,000 - \$34,999	11.0%	-1.2%	
\$35,000 - \$49,999	9.2%	-4.2%	
\$50,000 - \$74,999	23.5%	+5.9%	
\$75,000 - \$99,999	14.2%	+2.4%	
\$100,000 - \$149,999	8.6%	-1.6%	
\$150,000 - \$199,999	4.2%	-1.0%	
\$200,000+	0.9%	-0.1%	

Bars show deviation from
Valencia County

KEY FACTS

5,308

Population



2.6

Average Household Size

36.9

Median Age

\$54,775

Median Household Income

EDUCATION

13%

No High School Diploma



28%

High School Graduate



36%

Some College



23%

Bachelor's/Grad/Prof Degree

BUSINESS



160

Total Businesses



1,944

Total Employees

EMPLOYMENT



White Collar

63%



Blue Collar

20%



Services

17%

13.2%

Unemployment Rate

INCOME



\$54,775

Median Household Income



\$25,194

Per Capita Income



\$70,702

Median Net Worth

Households By Income

The largest group: \$50,000 - \$74,999 (21.4%)

The smallest group: \$200,000+ (1.3%)

Indicator	Value	Difference	
<\$15,000	15.0%	-0.6%	
\$15,000 - \$24,999	8.5%	-4.5%	
\$25,000 - \$34,999	10.1%	-2.1%	
\$35,000 - \$49,999	10.6%	-2.8%	
\$50,000 - \$74,999	21.4%	+3.8%	
\$75,000 - \$99,999	14.8%	+3.0%	
\$100,000 - \$149,999	11.8%	+1.6%	
\$150,000 - \$199,999	6.4%	+1.2%	
\$200,000+	1.3%	+0.3%	

Bars show deviation from
Valencia County