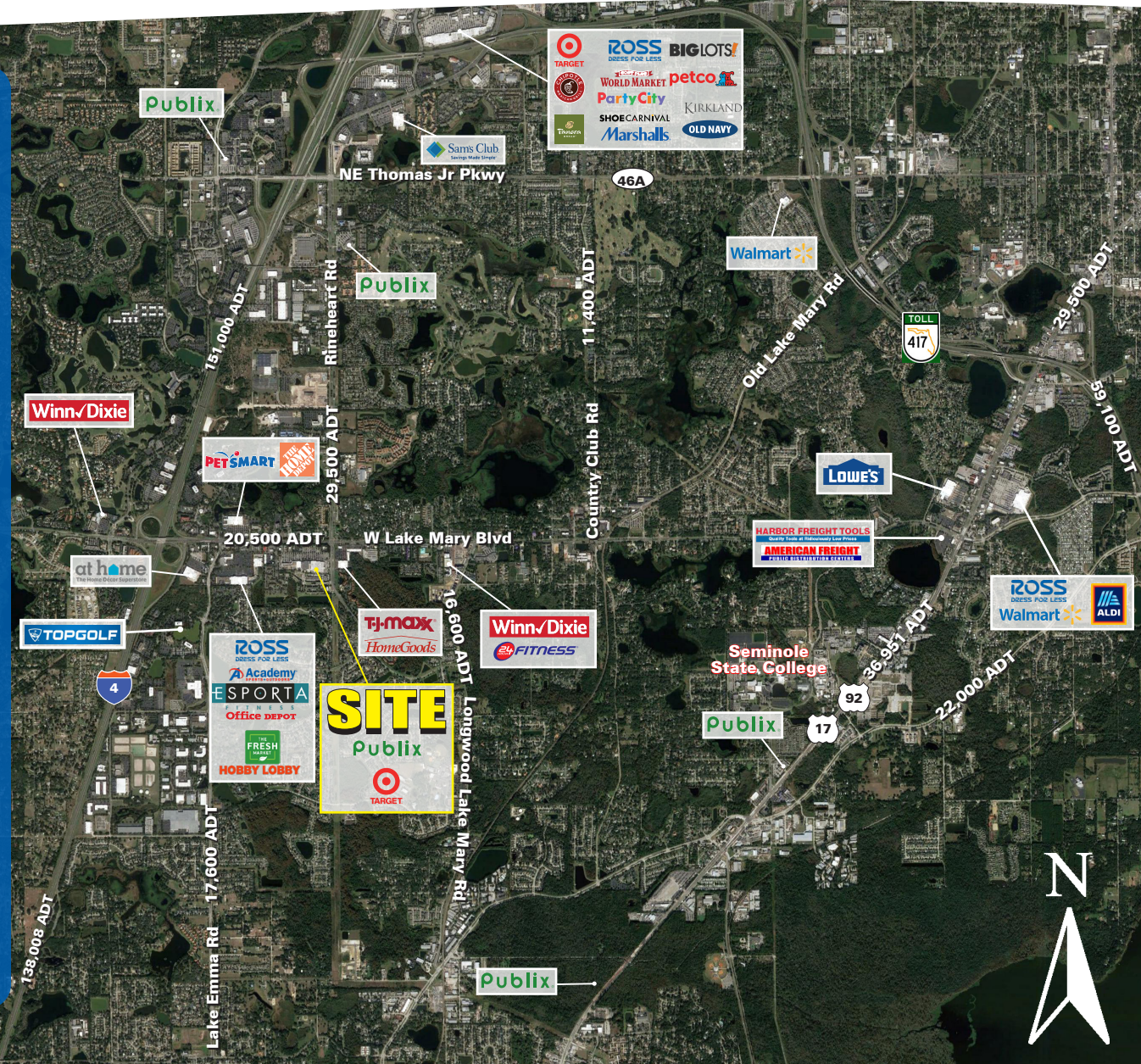


For Lease

Atlantic Retail is pleased to present The Shoppes of Lake Mary in Lake Mary, FL. Lake Mary is an affluent submarket of Orlando that benefits from a strong daytime population. This shopping center is approximately 250,000 SF and is very well positioned as it fronts W Lake Mary Blvd and sites just east of the I-4 interchange.

- Anchors include: Lake Mary's only Target and a strong performing Publix
- Nearby retailers include: Home Depot, At Home, TJ Maxx, HomeGoods, The Fresh Market, Ross Dress for Less, Hobby Lobby and Academy Sports
- 4,500 SF available immediately. 23,942 SF coming available
- 6M SF of office space in close proximity to the center

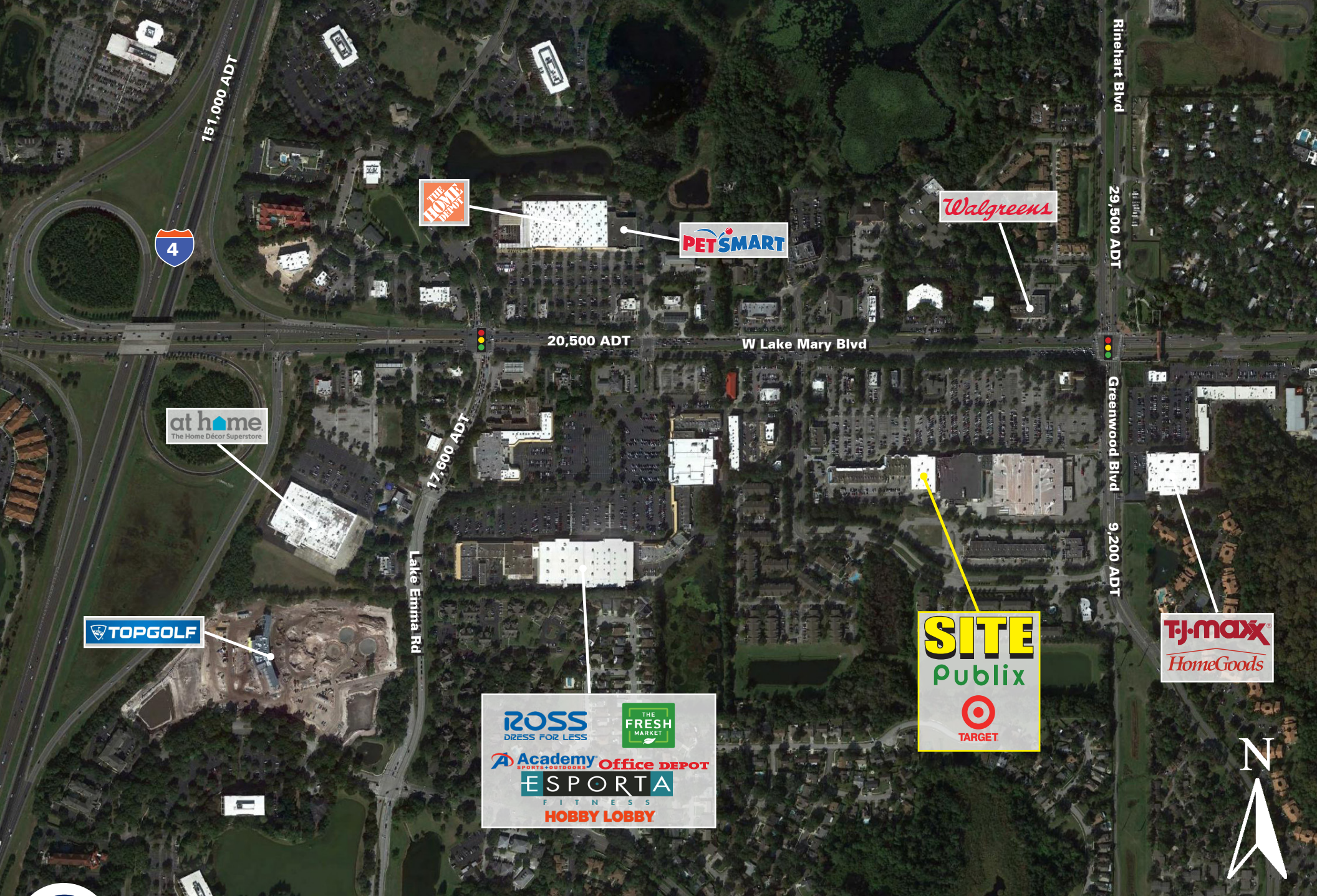
2020 DEMOGRAPHICS	1 MILE	3 MILE	5 MILE	7 MILE
Population	9,324	62,670	150,966	256,867
Med HH Income	\$71,642	\$96,134	\$83,462	\$77,728



Greg Godino
561.424.3013
ggodino@atlanticretail.com

Suzanne Washburn
407.919.6144
swashburn@atlanticretail.com

Mara Frumkin
407.919.6970
mfrumkin@atlanticretail.com



LAKE MARY, FL

4155 W Lake Mary Blvd

MARKET AERIAL

Greg Godino

561.424.3013
ggodino@atlanticretail.com

Suzanne Washburn

407.919.6144
swashburn@atlanticretail.com

Mara Frumkin

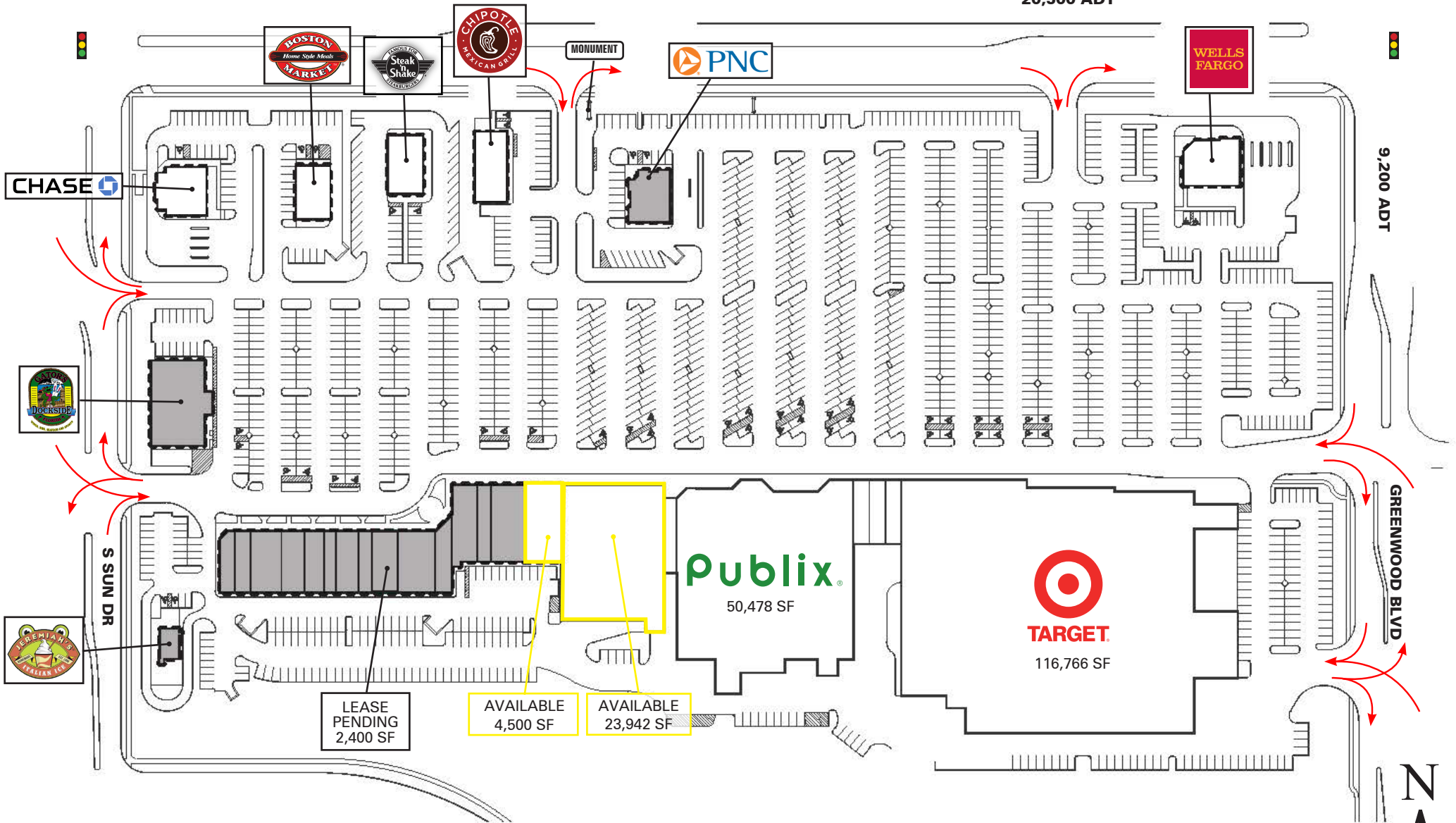
407.919.6970
mfrumkin@atlanticretail.com

ATLANTICRETAIL.COM

W LAKE MARY BLVD

20,500 ADT

9,200 ADT



LAKE MARY, FL

4155 W Lake Mary Blvd

Greg Godino

561.424.3013
ggodino@atlanticretail.com

Suzanne Washburn

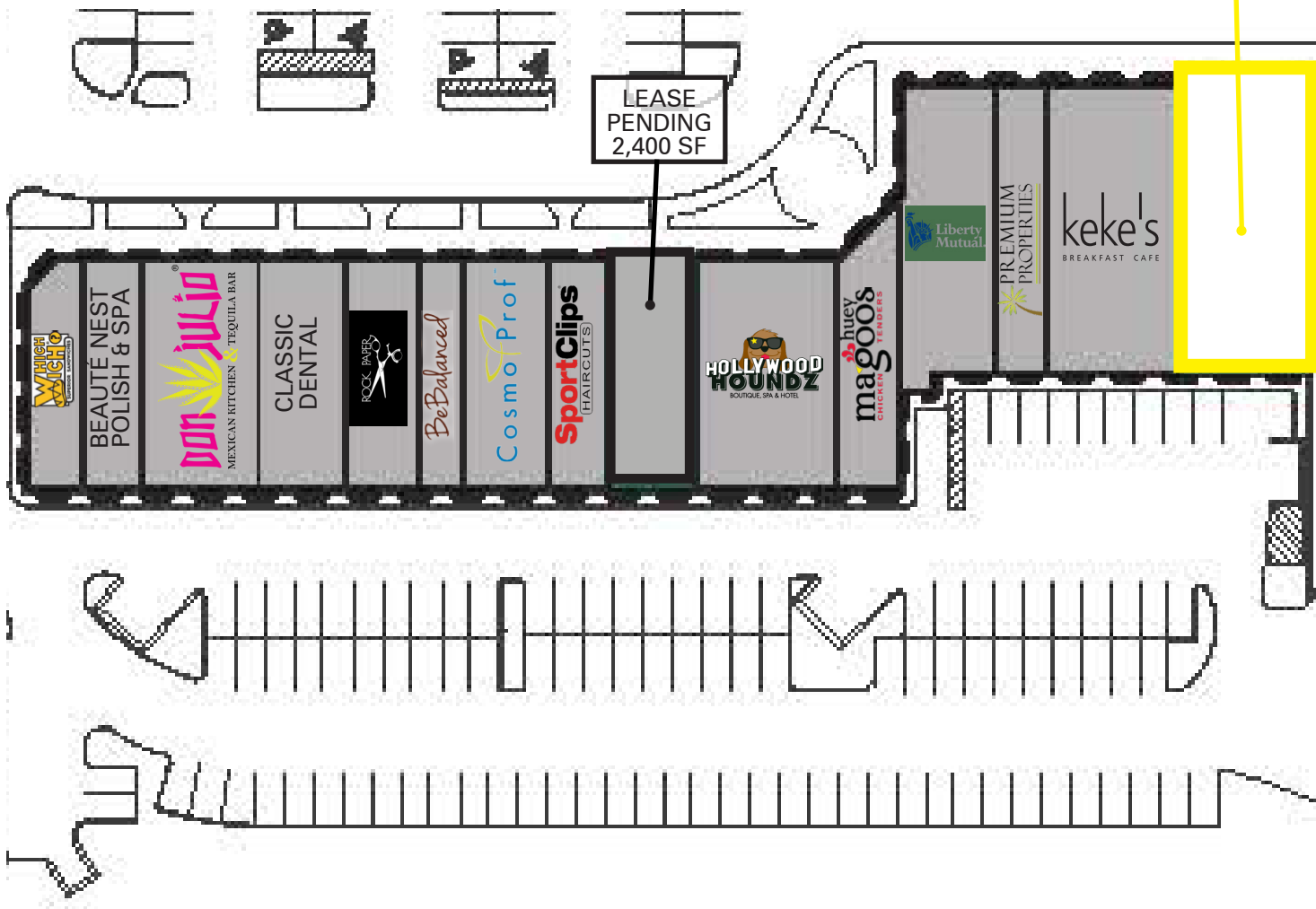
407.919.6144
swashburn@atlanticretail.com

Mara Frumkin

407.919.6970
mfrumkin@atlanticretail.com

SITE PLAN

ATLANTICRETAIL.COM



LAKE MARY, FL
 4155 W Lake Mary Blvd

Greg Godino
 561.424.3013
 ggodino@atlanticretail.com

Suzanne Washburn
 407.919.6144
 swashburn@atlanticretail.com

Mara Frumkin
 407.919.6970
 mfrumkin@atlanticretail.com