



BRIGGS HARDWARE BUILDING
220 FAYETTEVILLE ST
RALEIGH, NC 27601



**MOVE-IN
READY**



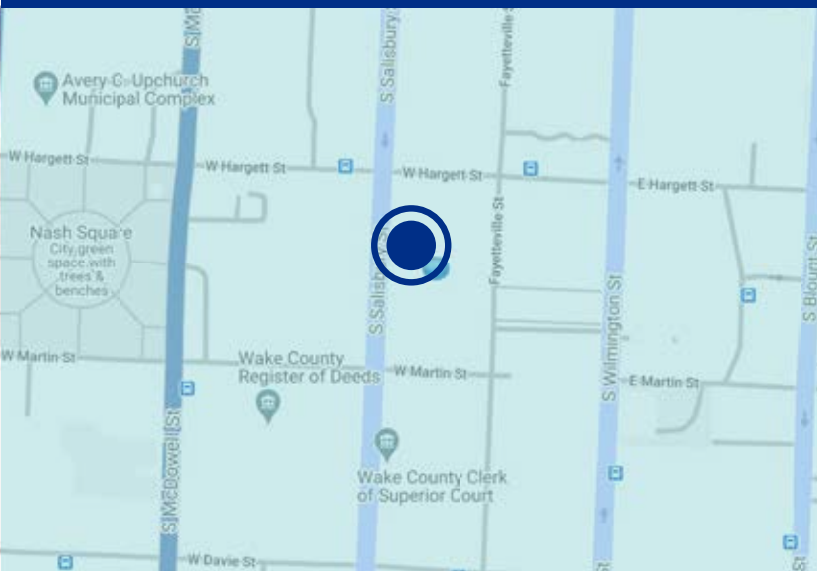
**FLEXIBLE
LEASE TERMS**



**HISTORIC
BUILDING**



**BELOW
MARKET RENTS**



VIRTUAL TOUR



1001 Wade Avenue, Suite 300, Raleigh, NC 27605
trademarkproperties.com • 919.782.5552

220 FAYETTEVILLE STREET RALEIGH, NC 27601

HISTORIC OFFICE SPACE FOR LEASE

PROPERTY OVERVIEW

- Office space for lease in historic building located on Fayetteville Street in Downtown Raleigh, two blocks from the State Capitol
- Originally built in 1874 as Raleigh's first high rise and fully restored in 1998
- Enhanced security features include secured floor specific elevator access and direct suite stair access from Fayetteville and Salisbury Streets
- Tenant dedicated, in-suite restrooms and operating windows for fresh air
- Hardwood floors with tall ceiling height throughout the suites
- A four-story light-well is centrally located, bringing natural light to every suite on all four floors
- City of Raleigh Museum located on the first floor
- Numerous parking, restaurant, and retail options within walking distance
- Opportunity for tenant's name to be listed on the front window building directory located on Fayetteville Street

SUITE	AVAILABLE SF	RATE
200	5,700 SF	\$25.00/SF, Full Service
400	3,063 SF	\$25.00/SF, Full Service



FRED DICKENS

fdickens@trademarkproperties.com
919.227.5508 direct 919.673.4775 mobile

SHELLEY BHATIA

sbbhatia@trademarkproperties.com
919.645.1421 direct 910.273.8474 mobile



TRADEMARK
PROPERTIES

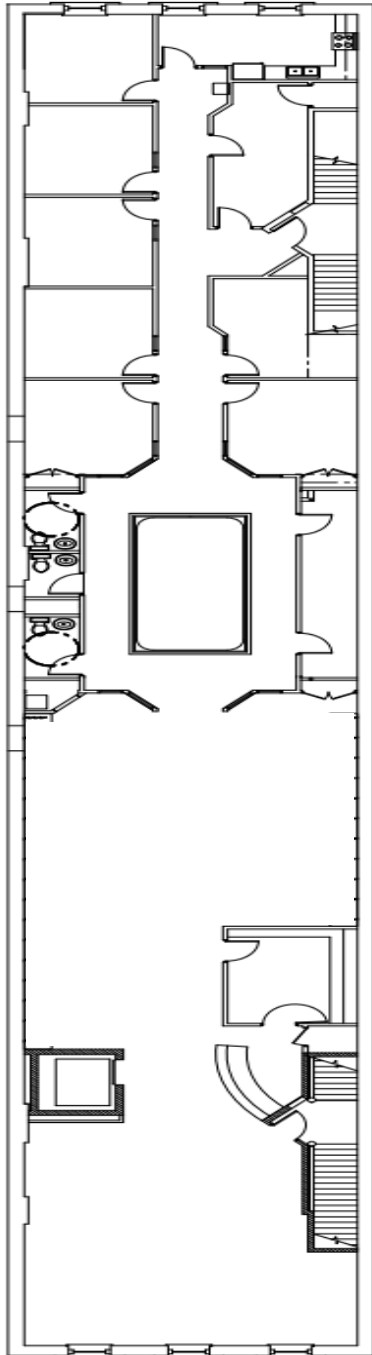
The information contained herein was obtained from sources believed reliable; however, Trademark Properties makes no guarantees, warranties, or representations as to the completeness or accuracy thereof. The presentation of this property is submitted subject to errors, omissions, changes of price or conditions prior to sale or lease, or withdrawal without notice.

1001 Wade Avenue, Suite 300, Raleigh, NC 27605
trademarkproperties.com • 919.782.5552

220 FAYETTEVILLE STREET
RALEIGH, NC 27601

HISTORIC OFFICE SPACE FOR LEASE

SUITE 200: 5,700 SF



SUITE 400: 3,063 SF



FRED DICKENS

fdickens@trademarkproperties.com
919.227.5508 direct 919.673.4775 mobile

SHELLEY BHATIA

sbbhatia@trademarkproperties.com
919.645.1421 direct 910.273.8474 mobile



TRADEMARK
PROPERTIES

The information contained herein was obtained from sources believed reliable; however, Trademark Properties makes no guarantees, warranties, or representations as to the completeness or accuracy thereof. The presentation of this property is submitted subject to errors, omissions, changes of price or conditions prior to sale or lease, or withdrawal without notice.

1001 Wade Avenue, Suite 300, Raleigh, NC 27605
trademarkproperties.com • 919.782.5552

220 FAYETTEVILLE STREET RALEIGH, NC 27601



5,767 residential units recently delivered, under construction, or planned

3,123 units completed since start of 2015

11,820 residents live downtown

52% increase in residents since 2015

97% occupancy rate for all multifamily properties in downtown



HISTORIC OFFICE SPACE FOR LEASE

Square Feet of Private Office Space	8.3 million
Hotel Rooms	1,448
Hotel Occupancy	75.6%
Average Hotel Daily Room Rate	\$156.92
Retailers	120
Restaurants	151
Arts & Cultural Institutions	432
Visitors to Top Attractions	3.5 million
% of Residents with Bachelor's Degree or Higher	58.6%
Enrollment in Raleigh Universities	41,425
Housing Units	7,586
Average Rent	\$1,669
Population within One Mile	20,002
Acres of Parks Near Downtown	447 acres
James Beard Nominations Since 2010	19
Walk Score	97



Source: Downtown Raleigh Alliance - State of Downtown 2020

FRED DICKENS

fdickens@trademarkproperties.com
919.227.5508 direct 919.673.4775 mobile

SHELLEY BHATIA

sbbhatia@trademarkproperties.com
919.645.1421 direct 910.273.8474 mobile



TRADEMARK
PROPERTIES

The information contained herein was obtained from sources believed reliable; however, TradeMark Properties makes no guarantees, warranties, or representations as to the completeness or accuracy thereof. The presentation of this property is submitted subject to errors, omissions, changes of price or conditions prior to sale or lease, or withdrawal without notice.

1001 Wade Avenue, Suite 300, Raleigh, NC 27605
trademarkproperties.com • 919.782.5552

220 FAYETTEVILLE STREET
RALEIGH, NC 27601

HISTORIC OFFICE SPACE FOR LEASE

AERIAL



FRED DICKENS

fdickens@trademarkproperties.com
919.227.5508 direct 919.673.4775 mobile

SHELLEY BHATIA

sbbhatia@trademarkproperties.com
919.645.1421 direct 910.273.8474 mobile



TRADEMARK
PROPERTIES

The information contained herein was obtained from sources believed reliable; however, TradeMark Properties makes no guarantees, warranties, or representations as to the completeness or accuracy thereof. The presentation of this property is submitted subject to errors, omissions, changes of price or conditions prior to sale or lease, or withdrawal without notice.

1001 Wade Avenue, Suite 300, Raleigh, NC 27605
trademarkproperties.com • 919.782.5552

220 FAYETTEVILLE STREET RALEIGH, NC 27601

HISTORIC OFFICE SPACE FOR LEASE

PARKING GARAGE MAP



POINTS OF INTEREST

- 1 Artspace (F4)
- 2 Burning Coal Theatre (C5)
- 3 CAM Raleigh (F2)
- 4 City Cemetery (E6)
- 5 City Market (F4)
- 6 City of Raleigh Municipal Building (E3)
- 7 City of Raleigh Museum (COR Museum) (E3)
- 8 City Plaza (F4)
- 9 Downtown Raleigh Alliance (F4)
- 10 Duke Energy Center for the Performing Arts (G3)
- 11 Greater Raleigh Chamber of Commerce (H3)
- 12 Haywood Hall House and Gardens (D4)
- 13 Historic Oakwood Cemetery (C6)
- 14 John Chavis Memorial Park (H6)
- 15 L.L. Polk House (B4)
- 16 LGBT Center of Raleigh (E4)

- 17 Marbles Kids Museum/Marbles IMAX (E4)
- 18 Morgan Street Food Hall (E2)
- 19 North Carolina Executive Mansion (D4)
- 20 North Carolina Museum of History (D4)
- 21 North Carolina Museum of Natural Sciences (D3)
- 22 North Carolina State Archives (D4)
- 23 North Carolina State Capitol (E3)
- 24 North Carolina State Legislative Building (D3)
- 25 Pope House Museum (G4)
- 26 Raleigh Convention Center (G3)
- 27 Raleigh, N.C. Visitor Information Center (G3)
- 28 Red Hat Amphitheater (G3)
- 29 Shops at Seaboard Station (B3)
- 30 Terry Sanford Federal Building & U.S. Courthouse (E5)
- 31 Transfer Co. Food Hall (F5)
- 32 VAE (F2)
- 33 Wake County Courthouse (F3)

PLACES TO STAY

- 34 Guest House Raleigh (F5)
- 35 Hampton Inn & Suites Raleigh Downtown/
Glenwood South (B1)
- 36 Holiday Inn Raleigh Downtown (D2)
- 37 Origin Raleigh (E1)
- 38 Raleigh Marriott City Center (G3)
- 39 Residence Inn Raleigh Downtown (G3)
- 40 Revison (B1)
- 41 Sheraton Raleigh Hotel (F3)
- 42 The Longleaf Hotel (C3)

TRANSPORTATION

- 43 GoRaleigh Transit Station (E4)
 - 44 Raleigh Union Station (F1)
- Q LINE** Red line = downtown Raleigh's FREE bus service; circulates approximately every 15 minutes. Hours: Mon.-Wed., 7am-6pm; Thurs.-Sat., 7am-2:15am; Sun., 1-8pm. = stops

FRED DICKENS

fdickens@trademarkproperties.com
919.227.5508 direct 919.673.4775 mobile

SHELLEY BHATIA

sbbhatia@trademarkproperties.com
919.645.1421 direct 910.273.8474 mobile



TRADEMARK
PROPERTIES

The information contained herein was obtained from sources believed reliable; however, TradeMark Properties makes no guarantees, warranties, or representations as to the completeness or accuracy thereof. The presentation of this property is submitted subject to errors, omissions, changes of price or conditions prior to sale or lease, or withdrawal without notice.

1001 Wade Avenue, Suite 300, Raleigh, NC 27605
trademarkproperties.com • 919.782.5552