

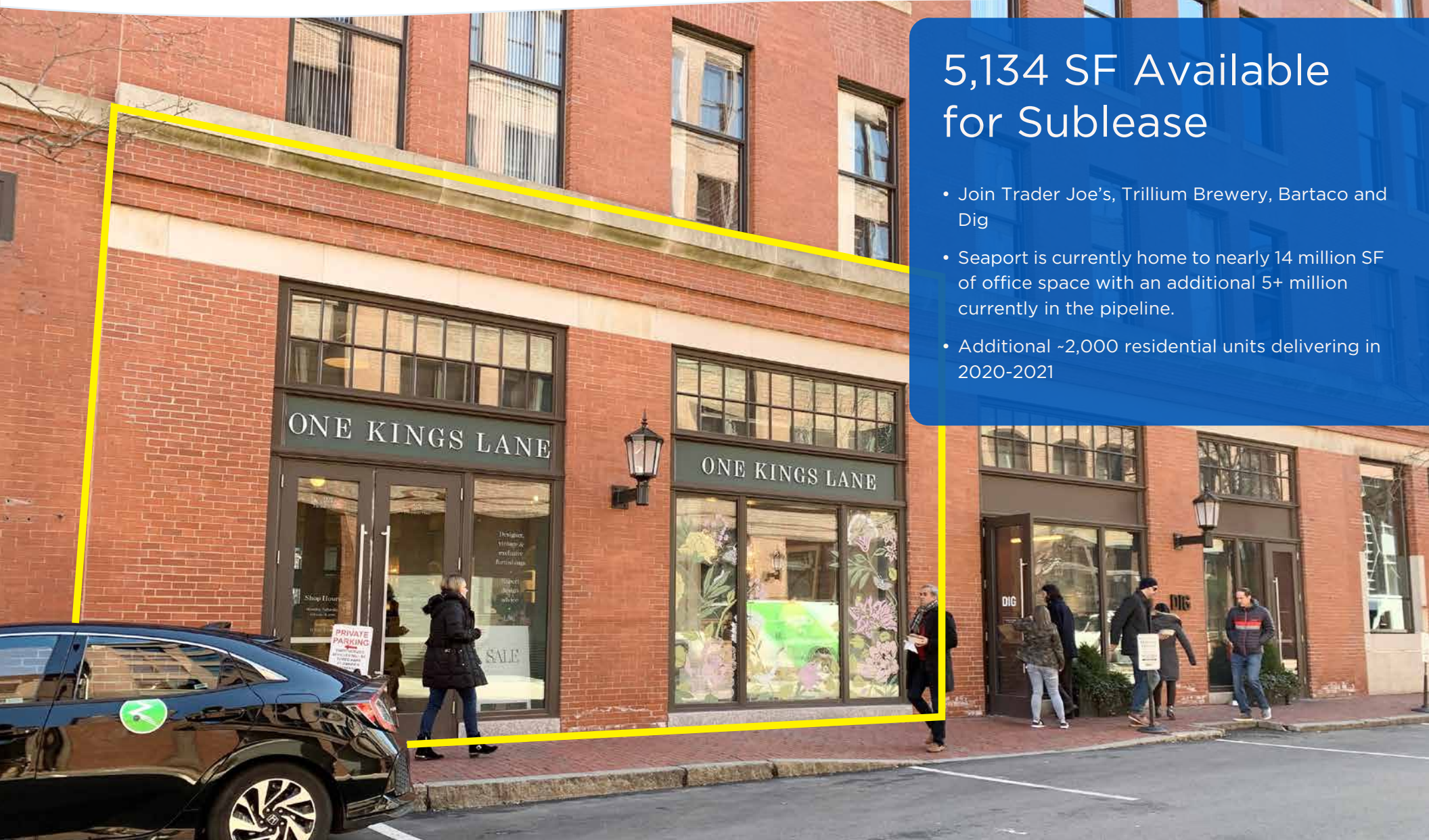
BOSTON, MA

25 Thomson Place



5,134 SF Available for Sublease

- Join Trader Joe's, Trillium Brewery, Bartaco and Dig
- Seaport is currently home to nearly 14 million SF of office space with an additional 5+ million currently in the pipeline.
- Additional -2,000 residential units delivering in 2020-2021



Ben Ravelson

617.239.3646

bravelson@atlanticretail.com

Robin Estus

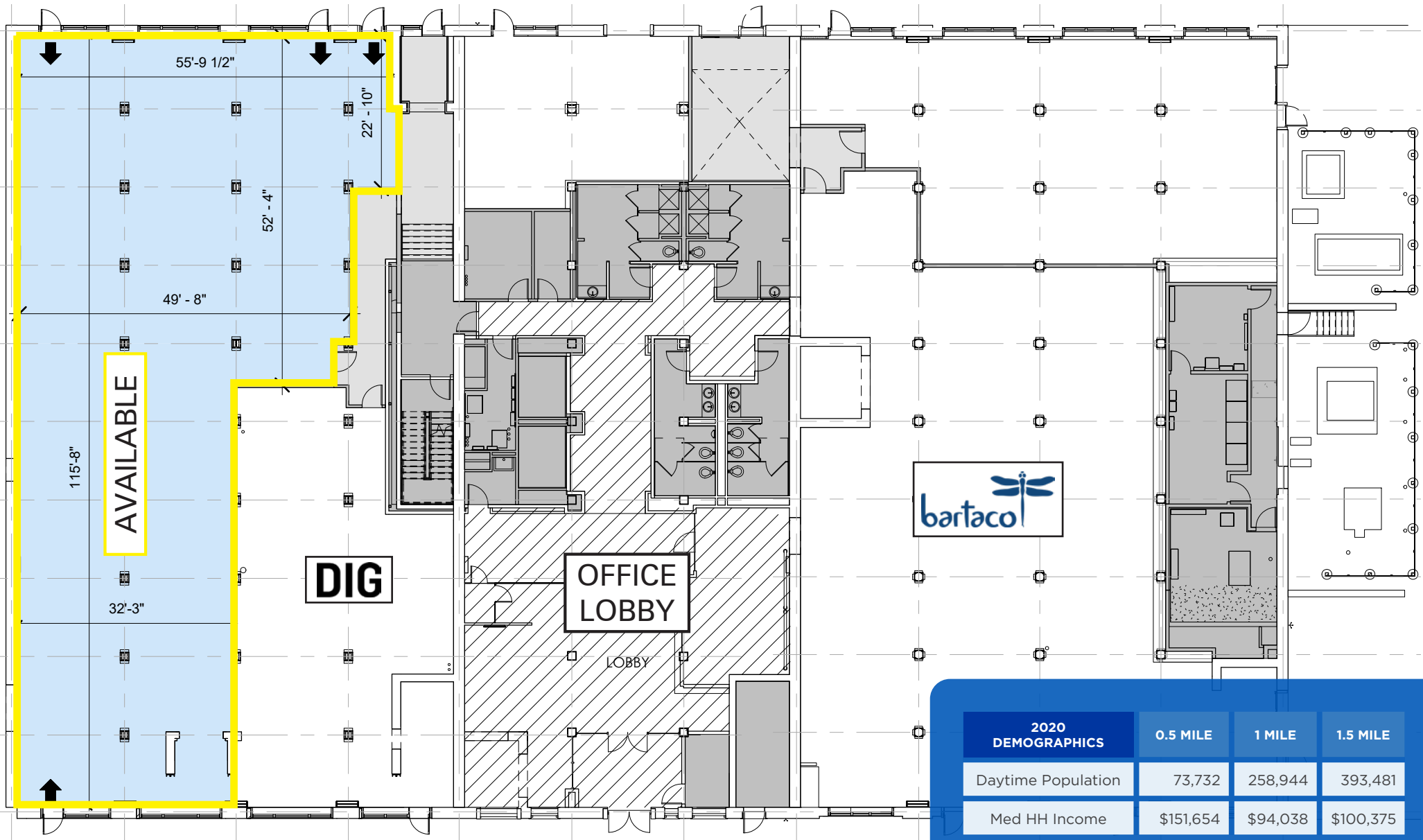
617.239.3604

restus@atlanticretail.com

ATLANTA | BOSTON | CHARLOTTE | LOS ANGELES | PITTSBURGH | WEST PALM BEACH

ATLANTICRETAIL.COM

© ATLANTIC RETAIL 2020 - The information above has been obtained from sources believed reliable. While we do not doubt its accuracy, we have not verified it and make no guarantee, warranty or representation about it.



2020 DEMOGRAPHICS	0.5 MILE	1 MILE	1.5 MILE
Daytime Population	73,732	258,944	393,481
Med HH Income	\$151,654	\$94,038	\$100,375



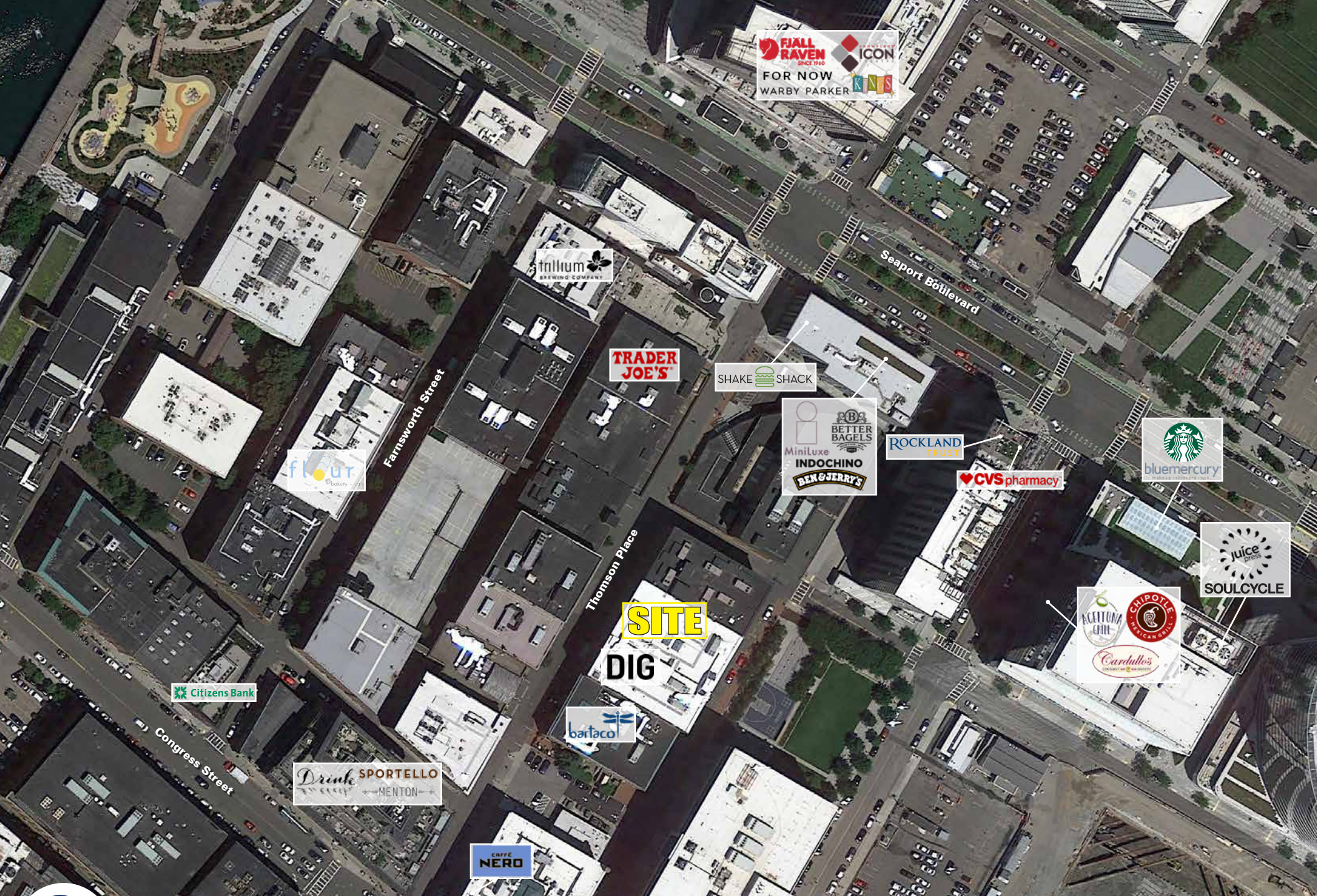
BOSTON, MA
 25 Thomson Place

FLOOR PLAN

Ben Ravelson
 617.239.3646
 bravelson@atlanticretail.com

Robin Estus
 617.239.3604
 restus@atlanticretail.com

ATLANTICRETAIL.COM



BOSTON, MA
25 Thomson Place

LOW AERIAL

Ben Ravelson
617.239.3646
bravelson@atlanticretail.com

Robin Estus
617.239.3604
restus@atlanticretail.com

ATLANTICRETAIL.COM