



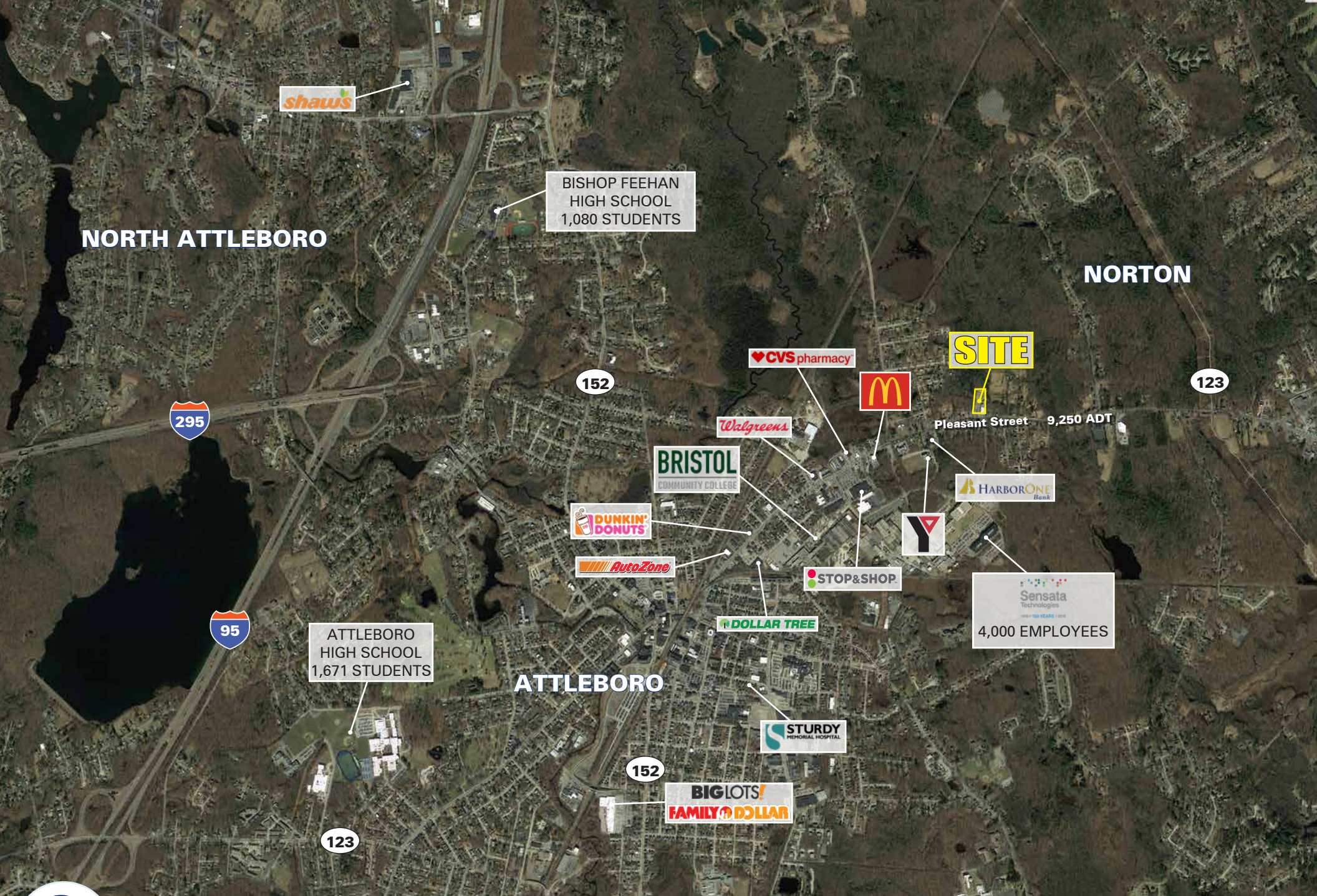
676 Pleasant Street - Available For Sale

- 2.3 acres available
- Commercially zoned
- Existing 14,490 SF auto repair facility
- Includes 10 lifts and 16 service bays

2019 DEMOGRAPHICS	1 MILE	3 MILE	5 MILE
Population	4,014	38,638	90,651
Med HH Income	\$59,060	\$84,903	\$92,527

Chris Kelly
617.239.3630
ckelly@atlanticretail.com

Pat Gallagher
617.239.3645
pgallagher@atlanticretail.com



NORTH ATTLEBORO

NORTON

ATTLEBORO

SITE

Pleasant Street 9,250 ADT

BISHOP FEEHAN
HIGH SCHOOL
1,080 STUDENTS

ATTLEBORO
HIGH SCHOOL
1,671 STUDENTS

Sensata
Technologies
4,000 EMPLOYEES



ATTLEBORO, MA
676 Pleasant Street

Chris Kelly
617.239.3630
ckelly@atlanticretail.com

Pat Gallagher
(617)239-3645
pgallagher@atlanticretail.com



SITE

± 2.36 Acres

± 14,490 SF

Pleasant Street

123

East Access

Dorchester Ave.



ATTLEBORO, MA

676 Pleasant Street

Chris Kelly

617.239.3630
ckelly@atlanticretail.com

Pat Gallagher

617.239.3645
pgallagher@atlanticretail.com