

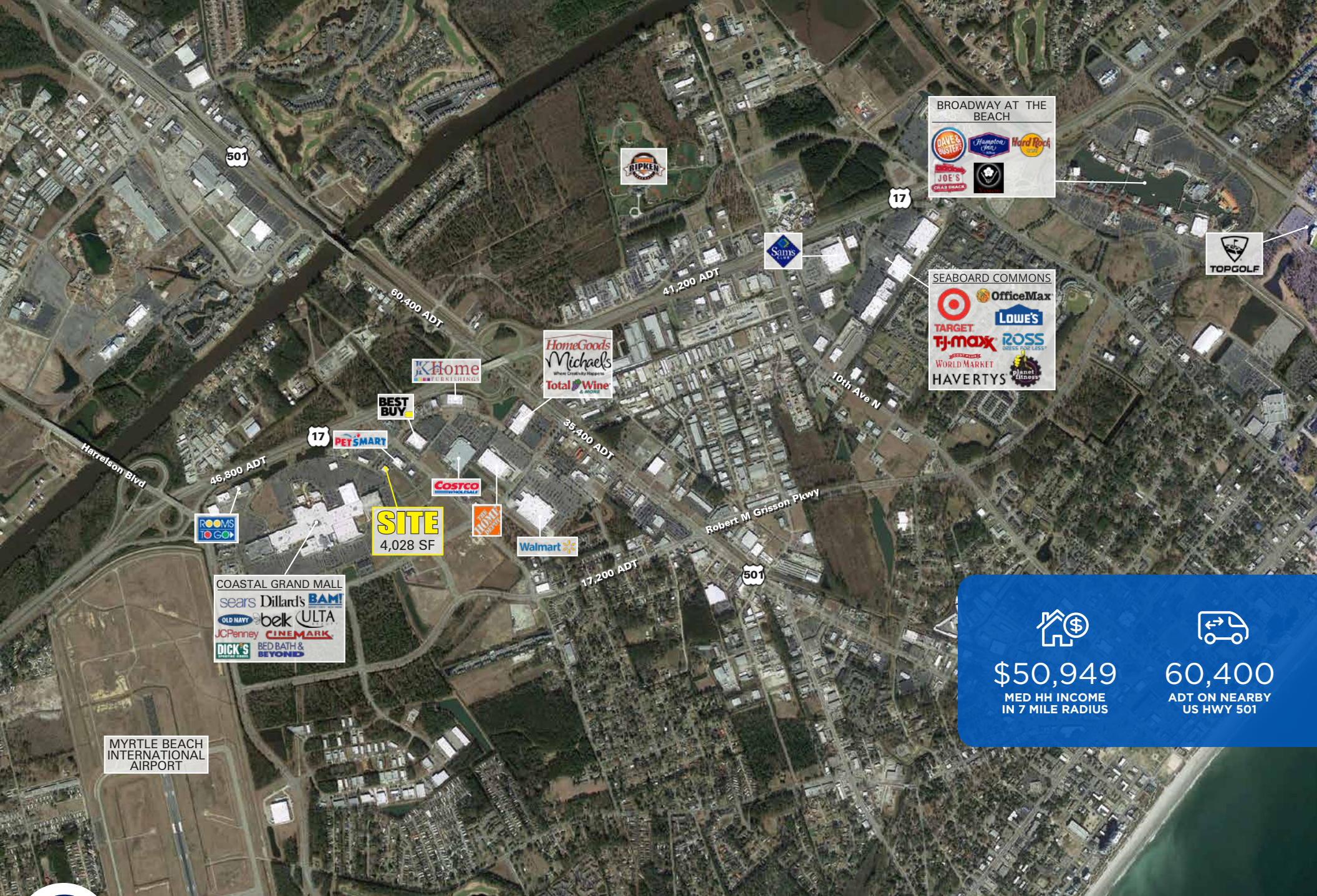
4,028-8,056 SF Available

- 4,028 SF Endcap available on outparcel to super regional Coastal Grand Mall (1.04 M SF)
- Total building of 8,056 SF on 1 acre and 43 total parking spaces can be made available
- Proximity to 2 major thoroughfares: US Hwy 501 (60,400 VPD) and US-17 Bypass s (46,800 VPD)
- Centrally located within the 60-mile "Grand Strand" which boasts more than 20.6 million visitors annually
- The population of the subject 5-mile trade area has increased by 35% since 2010



2020 DEMOGRAPHICS	1 MILE	3 MILE	5 MILE	7 MILE
Population	2,179	43,859	96,306	135,473
Med HH Income	\$39,547	\$44,152	\$49,564	\$50,949

Micah Groeber
 704.697.1902
 mgroeber@atlanticretail.com



BROADWAY AT THE BEACH

- DAVE & BUSTERS
- Hampton Inn
- Hard Rock
- JOE'S CRAB SHACK
- Planet Fitness



SEABOARD COMMONS

- OfficeMax
- LOWE'S
- TARGET
- TJ-max
- ROSS
- WORLD MARKET
- HAVERTYS
- Planet Fitness

COASTAL GRAND MALL

- sears
- Dillard's
- BAM!
- OLD NAVY
- belk
- ULTA
- JCPenney
- CINEMARK
- DICK'S
- BED BATH & BEYOND

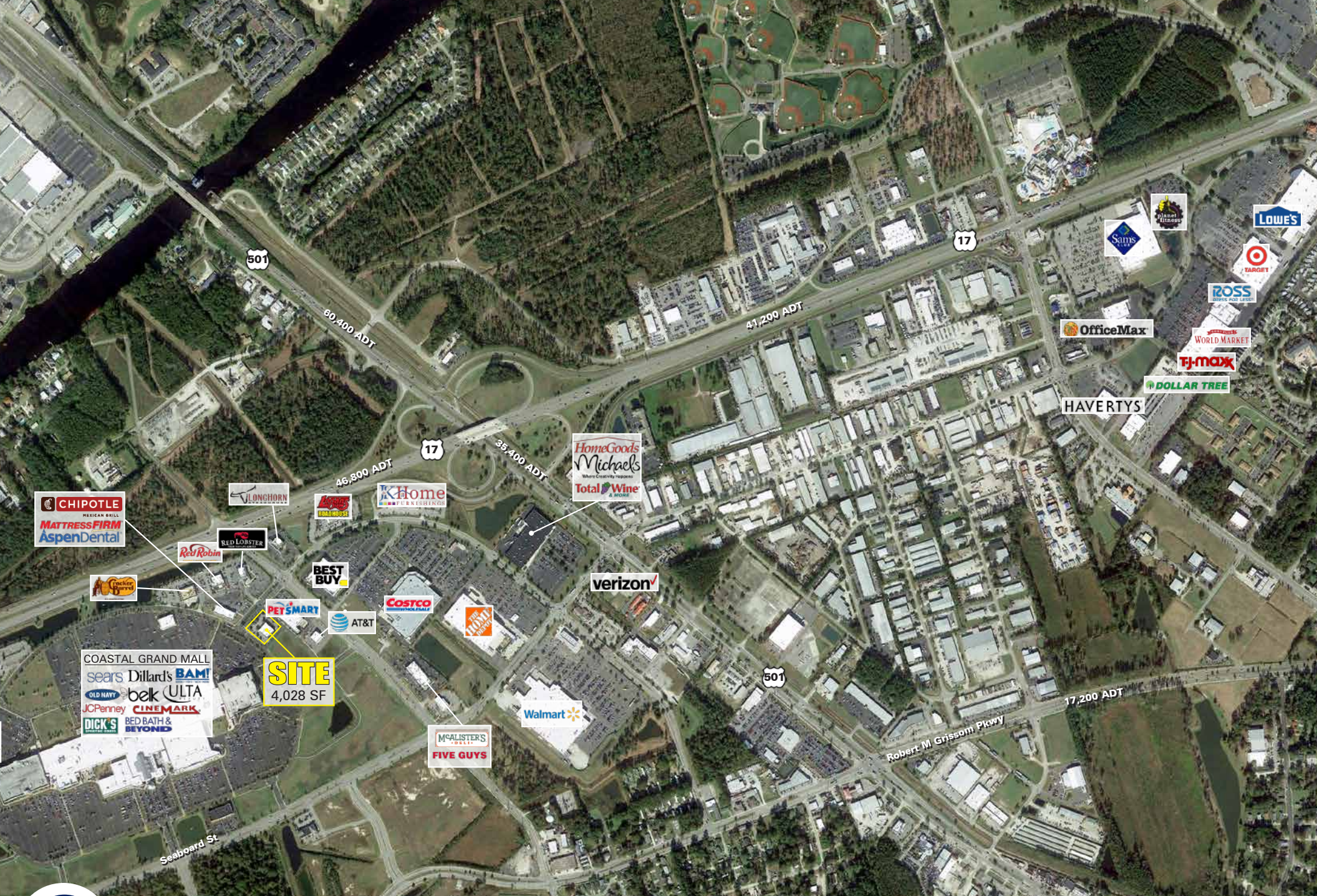
SITE
4,028 SF



\$50,949 **60,400**
 MED HH INCOME ADT ON NEARBY
 IN 7 MILE RADIUS US HWY 501



MYRTLE BEACH, SC
 1311-1315 Oak Forest Ln

Micah Groeber
 704.697.1902
 mgroeber@atlanticretail.com



MYRTLE BEACH, SC
 1311-1315 Oak Forest Ln

Micah Groeber
 704.697.1902
 mgroeber@atlanticrotail.com
 ATLANTICRETAIL.COM



46,800 ADT

17

Oak Forest Ln

Oak Forest Ln

Pine Island Rd

7,000 ADT

Seaboard St

SITE
4,028 SF

COASTAL GRAND MALL
sears Dillard's **BAM!**
OLD NAVY **belk** **ULTA**
JCPenney **CINEMARK**
DICK'S **BED BATH & BEYOND**



MYRTLE BEACH, SC
1311-1315 Oak Forest Ln

Micah Groeber
704.697.1902
mgroeber@atlanticretail.com

ATLANTICRETAIL.COM



MYRTLE BEACH, SC
1311-1315 Oak Forest Ln

Micah Groeber
704.697.1902
mgroeber@atlanticrotail.com
ATLANTICRETAIL.COM