

For Lease

±1,100 SF

Retail Property



## 655 St. Andrews Road

Columbia, South Carolina 29210

### Property Description

±1,100 SF of retail space in the Chef's Store Center (division of US Foods) at the intersection of St. Andrews Road and I-26 in Columbia, SC. Excellent visibility and easy access to I-26 and I-20.

### Property Highlights

- Center anchored by US Foods Chef's Store
- 22,300 vehicles per day on St. Andrews Road passing the Center
- 144,700 vehicles per day on I-26 at this interchange
- Zoning: C-2 Lexington County
- TMS #: 002899-04-026
- **Lease Rate: \$14 PSF, NNN**



For more information

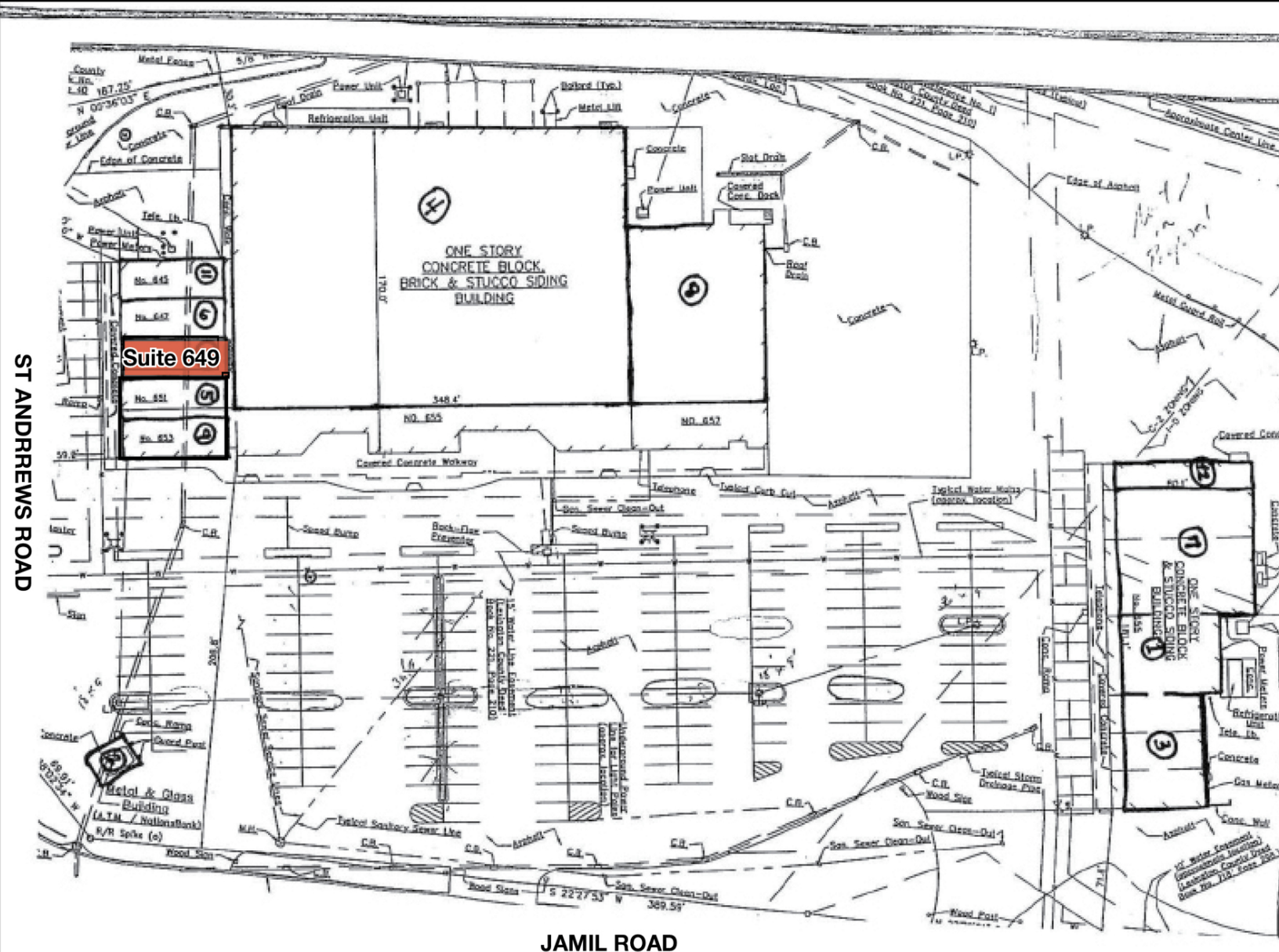
**Will Sherrod, CCIM**

843 364 3796

wsherrod@naicharleston.com

Additional Photos





JAMIL ROAD

# Retailer Map



SPOTLIGHT CINEMAS - ST. ANDREWS

U-HAUL

Steve's Classic Burgers

ROSES

PAPA JOHN'S

The Crab Shack III

SAFE FEDERAL CREDIT UNION

Domino's

Speedway

RODEWAY INN

St Andrews Rd

Shell

CHEF'S STORE GREAT FOOD. WHOLESALE PRICES.

B's Soul Food

IHOP RESTAURANT

DELHI PALACE

DOLLAR GENERAL

McDonald's

DUNKIN'

NICK'S Gyros & Philly's

SANDY'S SO BIG! SO GOOD!

ZAXBY'S

MAURICE'S BBQ PIGGIE PARK

WG'S Chicken Wings

Sub Station II

Google

Map data © 2021 Imagery © 2021, Maxar Technologies, U.S. Geological Survey, USDA Farm Service Agency

# Demographic Profile

655 St Andrews Rd, Columbia, South Carolina, 29210

	1 Mile	3 Miles	5 Miles		1 Mile	3 Miles	5 Miles
<b>Population</b>				<b>Median Household Income</b>			
2010 Census	11,538	49,271	111,519	2019 Estimate	\$37,961	\$43,231	\$49,034
2019 Estimate	12,452	52,553	121,339	2024 Projection	\$42,063	\$49,687	\$54,573
2024 Projection	13,054	54,756	127,550	<b>Average Household Income</b>			
% Chg. 2019-2021	4.8%	4.2%	5.1%	2019 Estimate	\$49,976	\$57,295	\$63,760
<b>Households</b>				2024 Projection	\$57,193	\$65,138	\$73,149
2010 Census	5,352	19,967	46,019	<b>Per Capita Household Income</b>			
2019 Estimate	5,632	21,313	49,848	2019 Estimate	\$22,621	\$23,416	\$26,459
2024 Projection	5,863	22,270	52,428	2024 Projection	\$25,708	\$26,604	\$30,339
<b>Families</b>				<b>2019 Household Income Dist.</b>			
2010 Census	2,693	10,460	26,117	Less than \$15,000	16.2%	14.5%	13.7%
2019 Estimate	2,772	10,933	27,654	\$15,000 - \$24,999	13.5%	12.3%	10.4%
2024 Projection	2,866	11,324	28,849	\$25,000 - \$34,999	14.8%	12.8%	11.8%
<b>2016 Age Distribution</b>				\$35,000 - \$49,999	20.4%	16.7%	14.7%
0 - 4	8.3%	6.1%	6.5%	\$50,000 - \$74,999	17.6%	20.4%	19.9%
5 - 9	6.0%	5.0%	5.5%	\$75,000 - \$99,999	7.1%	9.8%	11.4%
10 - 14	5.1%	4.6%	5.1%	\$100,000 - \$149,999	7.8%	9.2%	11.9%
15 - 19	5.5%	6.3%	6.1%	\$150,000 - \$199,999	1.6%	2.9%	3.8%
20 - 24	12.4%	10.3%	9.0%	\$200,000 and Up	1.0%	1.5%	2.2%
25 - 34	20.8%	19.5%	17.8%	<b>2019 Dist. by Race &amp; Ethnicity</b>			
35 - 44	11.7%	13.3%	13.1%	White Alone	34.2%	42.7%	51.8%
45 - 54	11.6%	13.2%	13.8%	Black Alone	53.6%	50.0%	39.1%
55 - 64	8.8%	10.2%	11.4%	American Indian Alone	0.3%	0.2%	0.3%
65 - 74	5.3%	6.1%	6.4%	Asian Alone	5.3%	2.7%	2.8%
75 - 84	3.2%	3.7%	3.6%	Pacific Islander Alone	0.6%	0.2%	0.2%
85+	1.2%	1.7%	1.6%	Some Other Race Alone	2.6%	1.7%	3.2%
<b>Median Age</b>				Two or More Races	3.5%	2.5%	2.6%
2010 Census	30.3	34.0	35.0	Hispanic Origin (Any Race)	5.0%	3.9%	6.6%
2019 Estimate	31.7	35.5	36.8	<b>2019 Housing Data</b>			
2024 Projection	31.9	36.1	37.6	Owner Occ. Housing Units	1,580	9,548	26,753
<b>Average Household Size</b>				Renter Occ. Housing Units	4,051	11,765	23,095
2010 Census	2.12	2.13	2.26	<b>2019 Business Data</b>			
2019 Estimate	2.17	2.16	2.29	Total Businesses:	149	1,084	3,847
2024 Projection	2.19	2.16	2.29	Total Employees:	1,761	12,544	50,129