

KING AND QUEEN BUILDING

145 King Street, Charleston, SC 29401



***photo represents a planned redevelopment of the 1st floor of the building*

PROPERTY FEATURES:

- Planned renovation in 2020 with updates to the interior common areas and a conversion of the King Street front to retail
- Outstanding walkability in the heart of historic downtown Charleston
- Available suites from \pm ,187 SF to \pm 2,962 SF
- Suite build out negotiable
- Convenient access with negotiable parking
- Rate: \$32/SF, full service

FOR MORE INFORMATION:

Scott P. Peevy, CCIM

+1 843.518.5316

speevey@naicharleston.com

Thomas Boulware, CCIM

+1 843.270.9124

tboulware@naicharleston.com

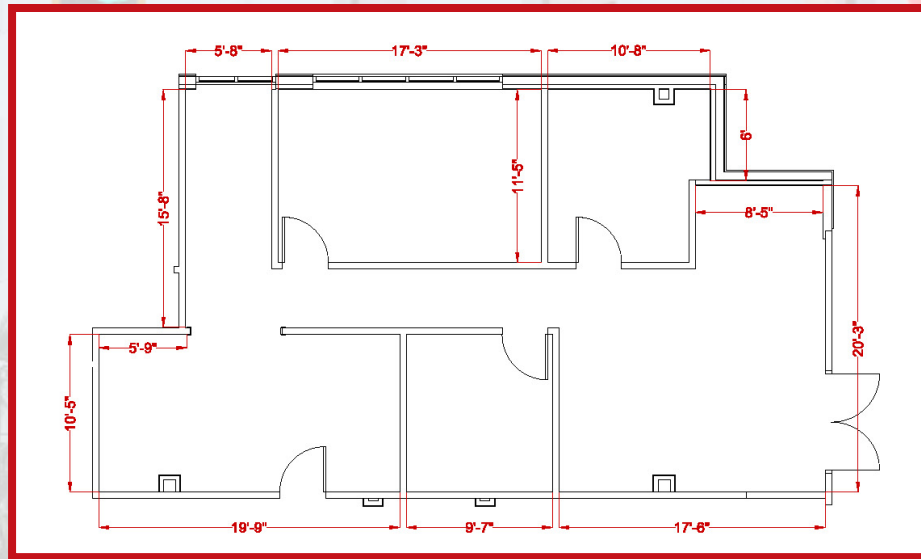
THE INFORMATION CONTAINED HEREIN HAS BEEN GIVEN TO US BY THE OWNER OF THE PROPERTY OR OTHER SOURCES WE DEEM RELIABLE. WE HAVE NO REASON TO DOUBT ITS ACCURACY, BUT WE DO NOT GUARANTEE IT. ALL INFORMATION SHOULD BE VERIFIED PRIOR TO PURCHASE OR LEASE.

141 Williman Street
Charleston, South Carolina 29403
+1 843.720.4944
naicharleston.com

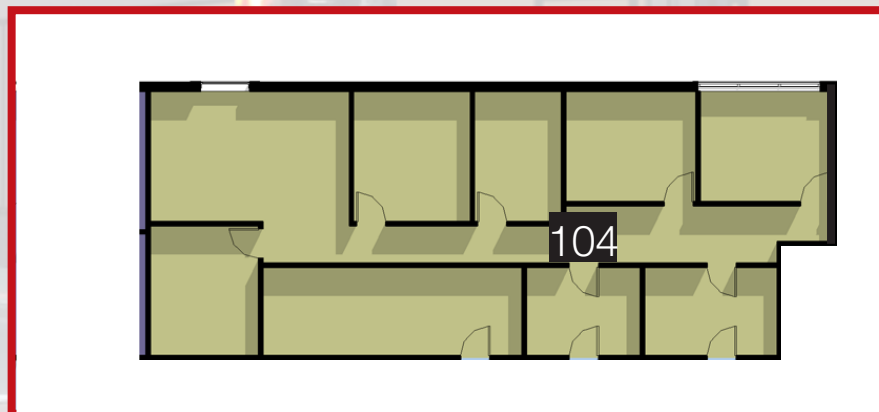
Available Suites

Suite	Available SF	Suite Features	Rate
102	±1,187	Available January 1, 2021. Three private offices, a welcoming reception, and a spacious conference room. Abundant natural light and outstanding access & visibility on ground floor lobby.	\$32/SF Full Service
104	±2,072	Available Now! Convenient first-floor office space with versatile layout.	\$32/SF Full Service
203	±2,338	Available now! A ready to occupy office suite ideally positioned on the rear corner of the building with picturesque views down Queen Street.	\$32/SF Full Service
410	±2,962	Available now! A ready-to-occupy suite. 7 offices- 6 of which are generously sized-1 conference room, reception area, break room (could serve as another office), work and copy area, and storage closets. Large windows offering an abundance of natural light and views of King Street.	\$32/SF Full Service

SUITE:
102

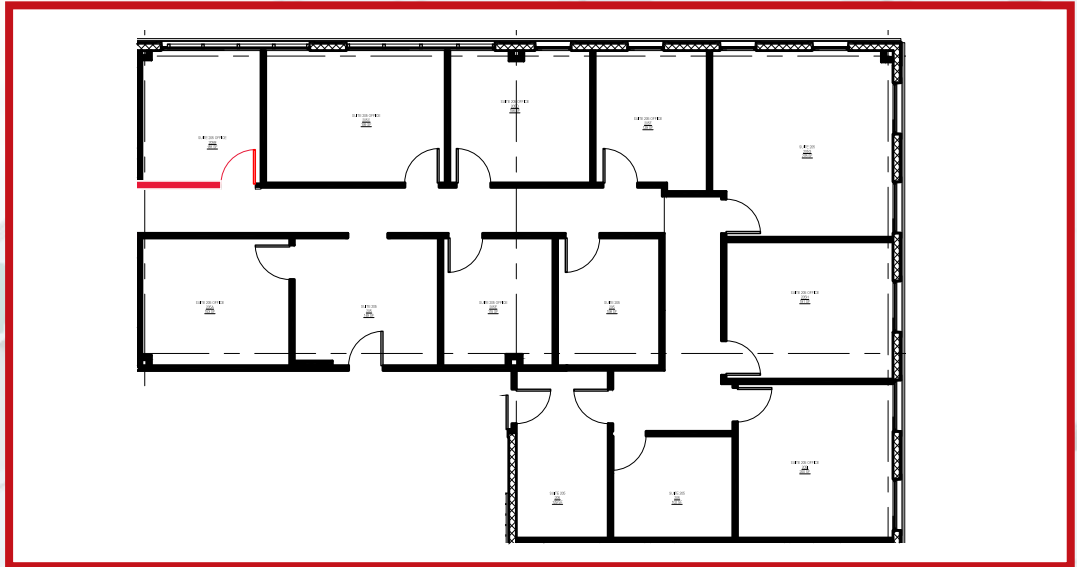


SUITE:
104



Floor Plans & Suite Descriptions

SUITE 203



SUITE 410

