

CORKTOWN
ELTON PARK
DETROIT

CHECKER BUILDING

SOAVE
ENTERPRISES

STOKAS & BIERI
REAL ESTATE

Welcome to Elton Park

Elton Park isn't a neighborhood you just pass through. You linger to take it all in, connect with your surroundings and immerse yourself in the abundance of rich experiences. Elton Park spans five blocks with six distinct buildings, creating a neighborhood of 151 apartments and street-level retail.

Elton Park also features the Checker Alley, a neighborhood gathering space with retail between the Checker Building and 2120 Trumbull.




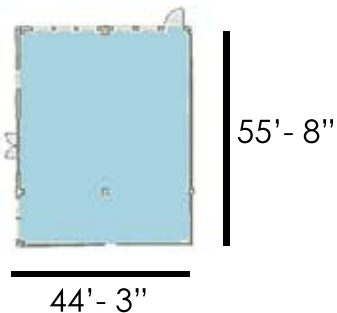
Retail Leasing



CHECKER BUILDING


The Checker Building celebrates its history as the birthplace of the Checker Cab company through subtle nods to the past. The historic three-story structure is redeveloped into a mix of loft-style apartments, with 1st floor retail.

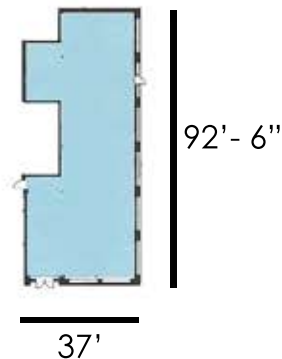
 1st floor retail - 2,542 SF



THE ROBERTSON


Named in honor of George Robertson, the first taxi driver in Detroit to paint black and white checkers on his cab.

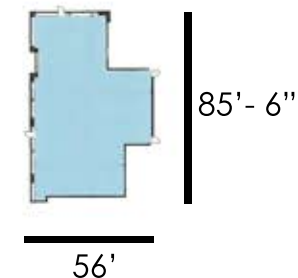
 1st floor retail - 2,995 SF



CRAWFORD

The Crawford name resurrects what was once a neighborhood green space and gathering place. Like Elton Park, Crawford Park was covered over to build the freeways, and now lies under the I-75 and Lodge interchange.

 1st floor retail - 3,888 SF




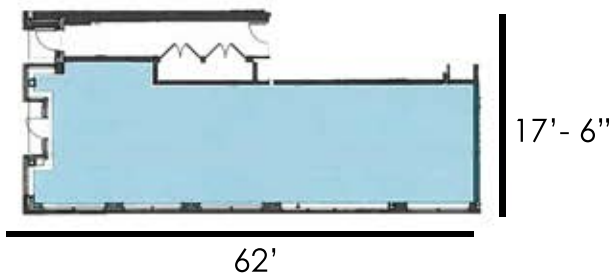
Retail Leasing



2100 TRUMBULL


Flexible opportunities for live/work environments. The first floor will feature retail with exposure to Trumbull and Elizabeth Street.

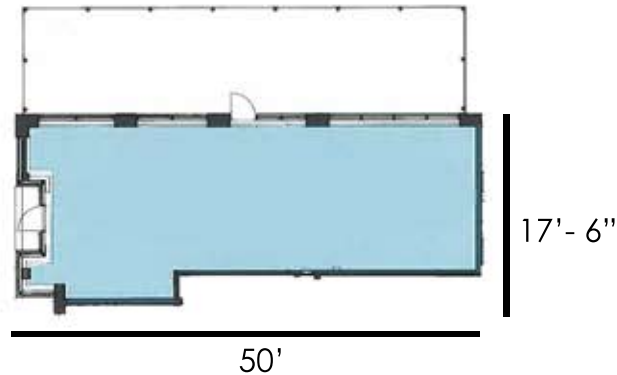
 1st floor retail - 1,161 SF



2120 TRUMBULL

Flexible opportunities for live/work environments. The first floor will feature retail with exposure to Trumbull and Checker Alley.

 1st floor retail - 973 SF

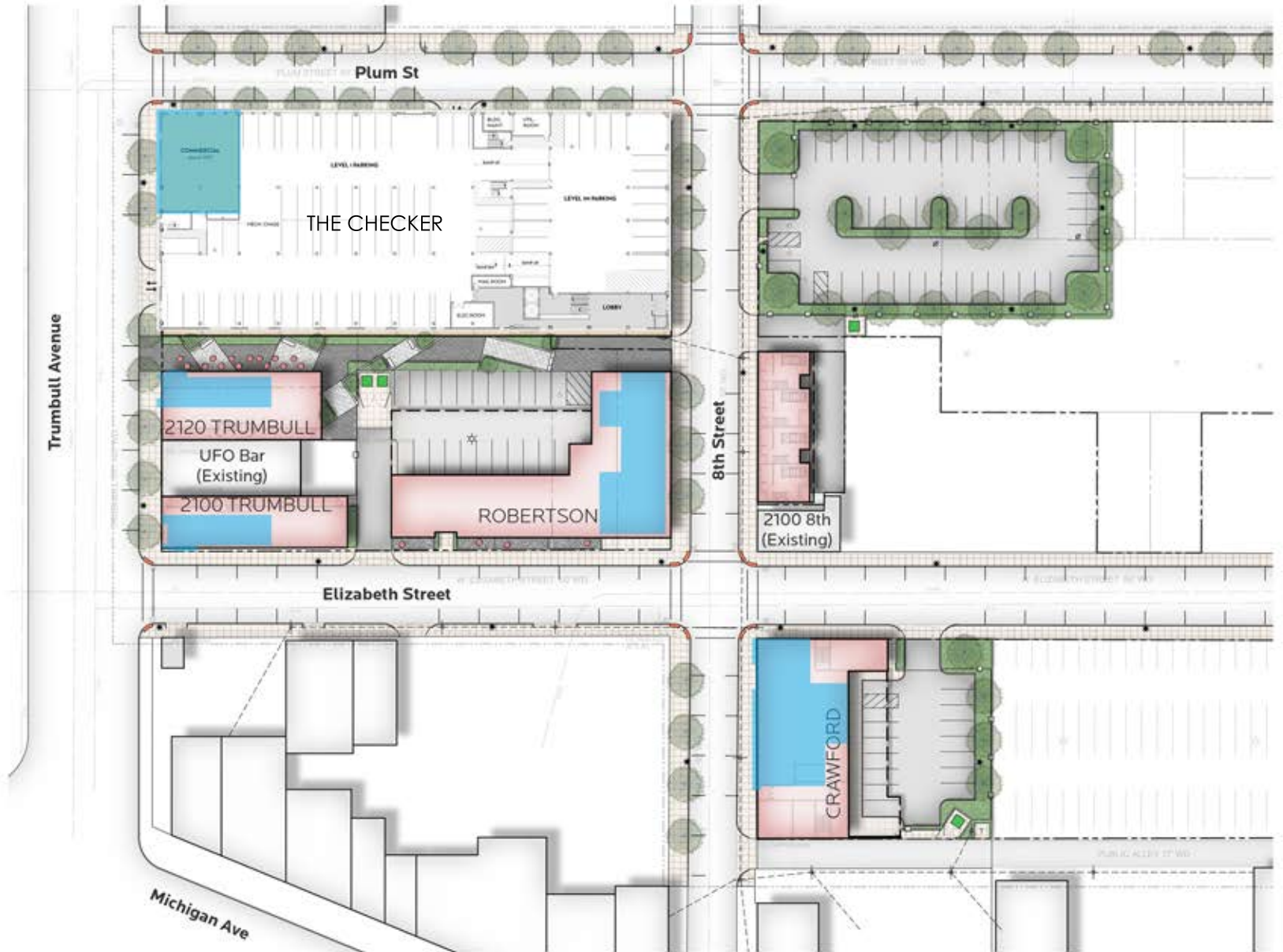


8TH STREET ROW

Inspired by Ireland's row houses, which includes 4 three-story attached walk-up row houses.

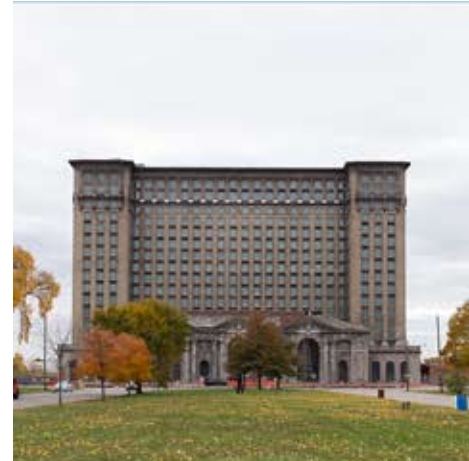
Site Plan

 Retail Space



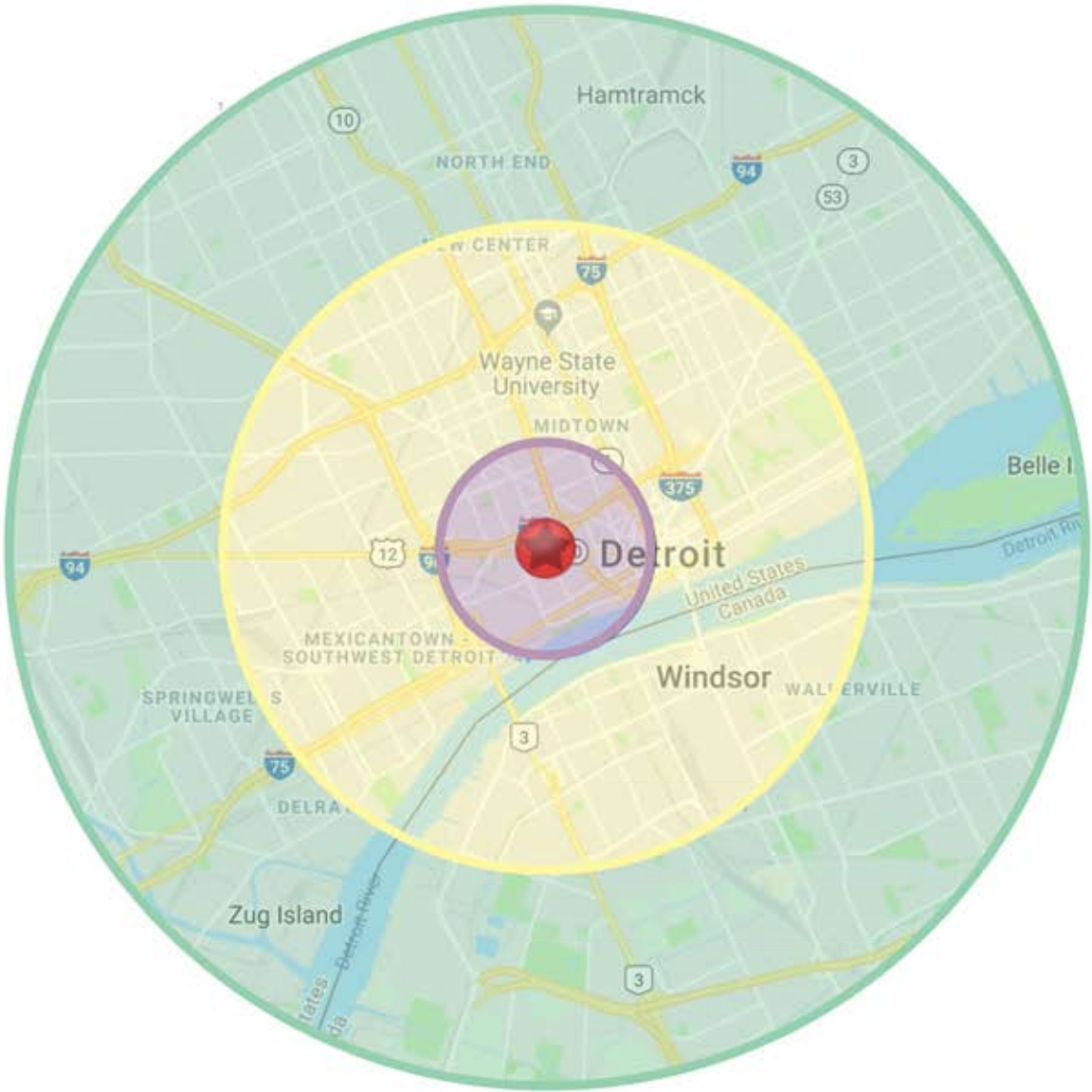


Intimate
Eclectic
Stimulating
Subtle





Demographics



Area Demographics	1 Mile	3 Miles	5 Miles
Est Population (2018)	12,880	84,004	233,615
Average HH Income	\$57,185	\$46,561	\$42,610
Households	7,700	41,273	98,606
Median Age	41.3	36.0	35.3

Daytime Demographics	1 Mile	3 Miles	5 Miles
Total Businesses	1,579	8,440	11,812
Daytime Population	43,631	191,657	295,524

Corktown Retail



South

- 1 Woodward Throwbacks
- 2 Polymath Development
- 3 Two James Spirits
- 4 Cork & Gabel
- 5 Mercury Burger & Bar
- 6 VACANT
- 7 Black the Salon
- 8 Metropolis Cycles
- 9 Goodyear
- 10 ima
- 11 Motor City Wine
- 12 Redevelopment
- 13 Firestone
- 14 Marathon
- 15 Bucharest Grill
- 16 EATON Detroit Spring
- 17 Onassis Coney Island

- 18 St. Peter's Episcopal Church
- 19 Metrotech Collision
- 20 Downtown Auto Wash

North

- 21 Xavier's
- 22 Slows BBQ
- 23 Bill Murray Crafts Cocktails
- 24 The Sugar House
- 25 Astro Coffee
- 26 O'Connor Realty
- 27 LJ's Lounge
- 28 Gold Cash Gold
- 28 Gaelic League
- 29 Detroit Barber Shop
- 30 White Castle
- 31 Blevins Sanborn Jezdimir Zack PLC
- 32 Maltese American Benevolent
- 33 Red Corridor
- 34 Bobcat Bonnie's
- 35 Detroit Athletic Co

- 36 Corktown Tavern
- 37 Eldorado General Store
- 38 The Corner (Old Tiger Stadium)
- 39 UFO Factory
- 40 McShane's
- 41 MKT The Market
- 42 True Body Fitness
- 43 Xcalivur Salon
- 44 VACANT
- 45 VACANT
- 46 VACANT
- 47 Ottawa Via
- 48 Nemo's Bar
- 49 FOR SALE
- 50 The Brooklyn Street Local
- 51 PJ's Lager House
- 52 Detroit Institute of Bagels

STOKAS BIERI REAL ESTATE

660 Woodward Ave, Ste 1500, Detroit, MI 48226
www.StokasBieri.com



DONNA BARNETT 313.962.2800 dbarnett@sbre1.com

@StokasBieriRE