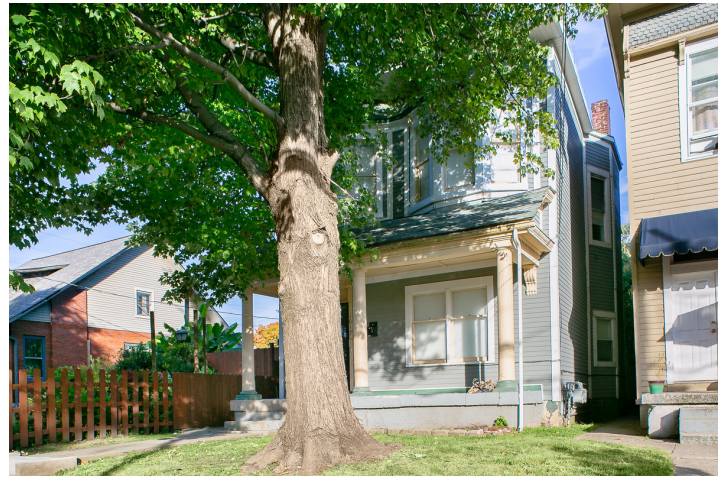


Leased Duplex Investment

1017 S 1st St, Louisville, KY 40203



Listing ID: 30656395
Status: Active
Property Type: Multi-Family For Sale
Multi-Family Type: Duplex/Fourplex
Size: 2,779 SF
Sale Price: \$169,000
Unit Price: \$84,500 Per Unit
Sale Terms: Cash to Seller



Overview/Comments

PRG is pleased to offer this turn-key, entry level, fully leased multifamily investment opportunity. The property consists of one spacious 2BR/1BA unit leased for \$775/mo and one spacious 1BR/1BA unit leased for \$675/mo
Highlights include:

- > Each unit has the potential for additional bedrooms
- > Total income of \$1,450/mo
- > LL pays water, tenants pay their own LGE
- > Off street parking
- > Multiple capital improvements, including new Hardie siding, flooring, roof repairs, concrete repairs, exterior lighting, and more

More Information Online

<https://prginvestments.catylist.com//listing/30656395>

QR Code

Scan this image with your mobile device:



General Information

Tax ID/APN: 030G00600000
Multi-Family Type: Duplex/Fourplex
Zoning: TNZD - Traditional Neighborhood Zoning District
Property Use Type: Investment

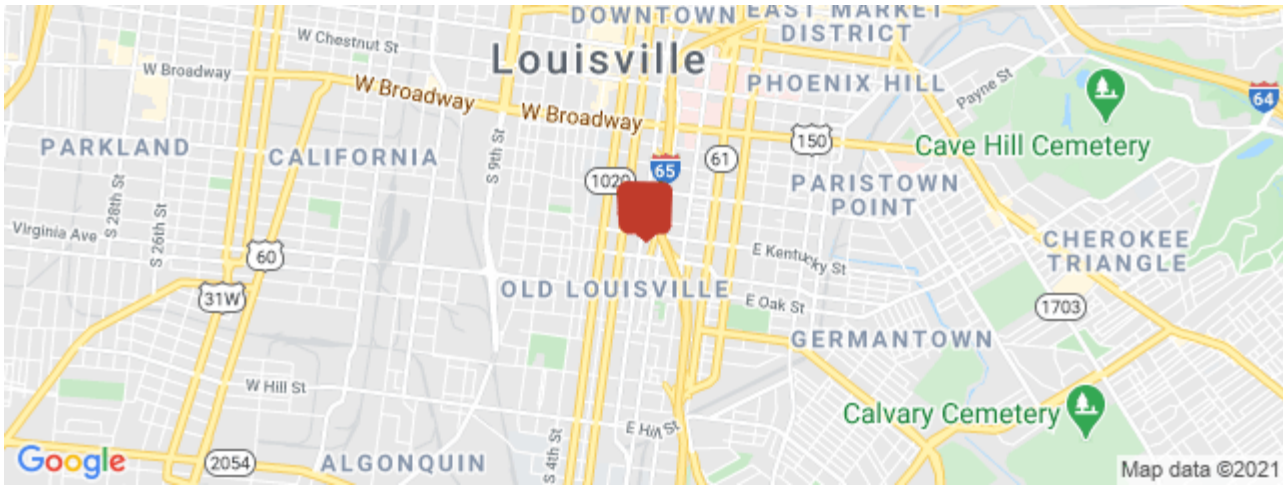
Total Number of Units: 2
Gross Building Area: 2,779 SF
Building/Unit Size (RSF): 2,779 SF
Sale Terms: Cash to Seller

Building Related

Passenger Elevators: 0
Freight Elevators: 0

Location

Address: 1017 S 1st St, Louisville, KY 40203
County: Jefferson
MSA: Louisville/Jefferson County



Property Contacts



Jenny Johnston

PRG Commercial Property Advisors

502-645-1729 [M]

502-365-3840 [O]

jenny@prginvestments.com