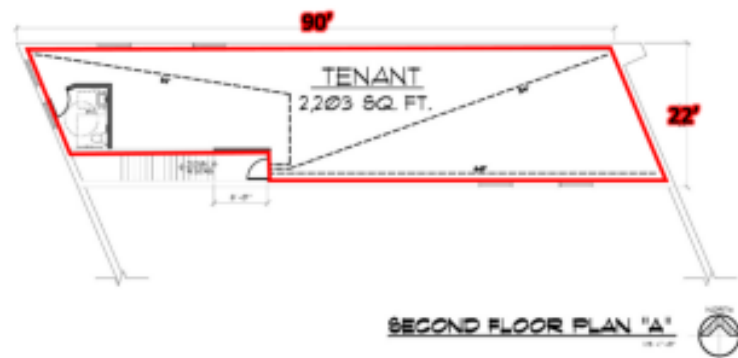
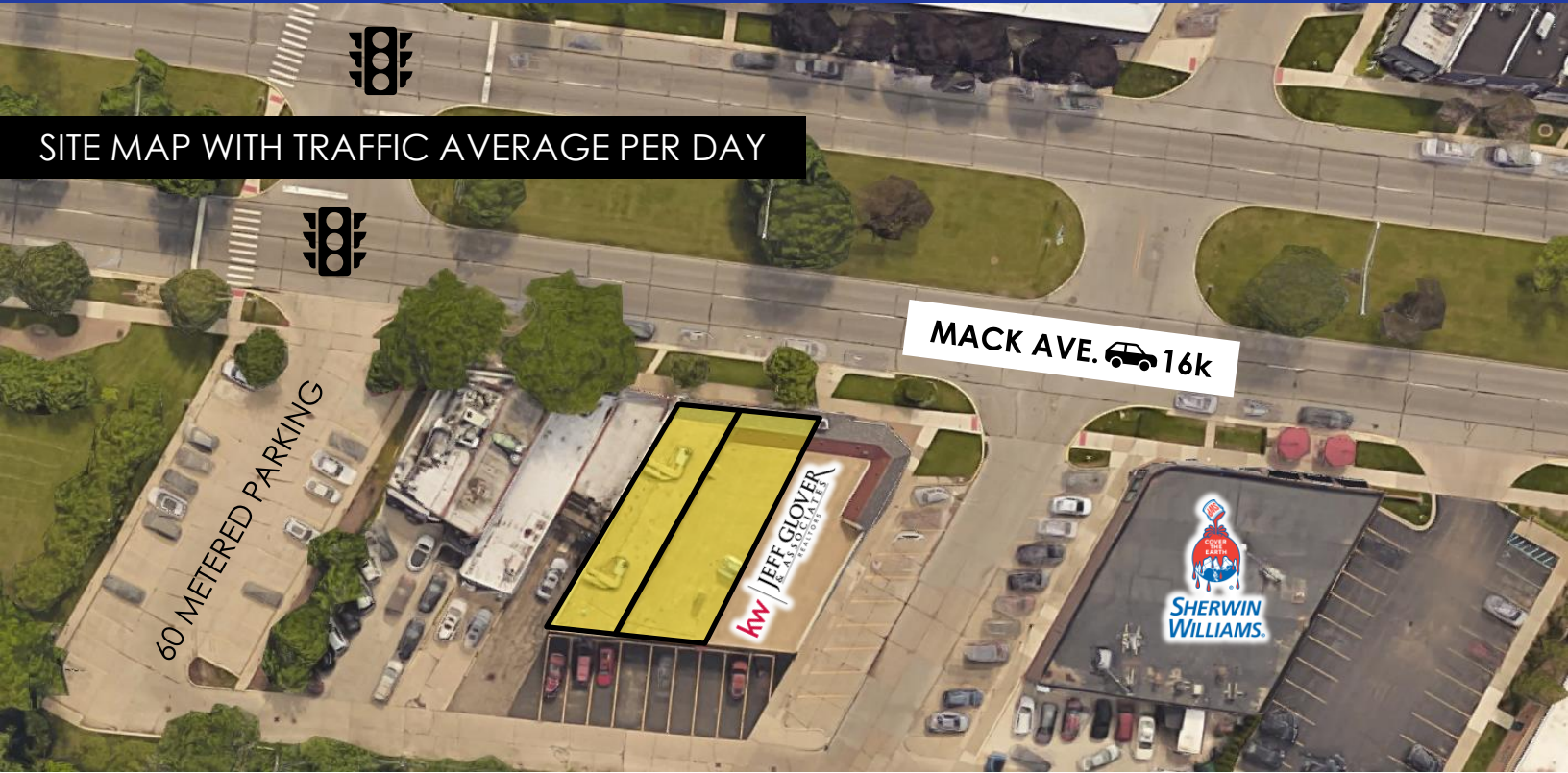


FOR LEASE

Mack Ave. Retail Space

19853 Mack Ave., Grosse Pointe Woods, MI 48326



SEAN VON SCHWARZ 313.962.2800 sean@sbre1.com



SBRE // Stokas Bieri Real Estate // 660 Woodward Ave. // Suite 1500 // Detroit MI 48226 // 313.962.2800 // stokasbieri.com
No warranty or representation, expressed or implied, is made as to the accuracy of the information contained herein, and same is submitted subject to errors, omissions, change of price, rental or other conditions, withdrawal without notice, any special list conditions imposed by our Principals.

FOR LEASE

Mack Ave. Retail Space

19853 Mack Ave., Grosse Pointe Woods, MI 48326



SEAN VON SCHWARZ 313.962.2800 sean@sbre1.com



SBRE // Stokas Bieri Real Estate // 660 Woodward Ave. // Suite 1500 // Detroit MI 48226 // 313.962.2800 // stokasbieri.com
No warranty or representation, expressed or implied, is made as to the accuracy of the information contained herein, and same is submitted subject to errors, omissions, change of price, rental or other conditions, withdrawal without notice, any special list conditions imposed by our Principals.

FOR LEASE

Mack Ave. Retail Space

19853 Mack Ave., Grosse Pointe Woods, MI 48326



EAST ELEVATION



SEAN VON SCHWARZ 313.962.2800 sean@sbre1.com



SBRE // Stokas Bieri Real Estate // 660 Woodward Ave. // Suite 1500 // Detroit MI 48226 // 313.962.2800 // stokasbieri.com
No warranty or representation, expressed or implied, is made as to the accuracy of the information contained herein, and same is submitted subject to errors, omissions, change of price, rental or other conditions, withdrawal without notice, any special list conditions imposed by our Principals.