

Class A Office Building

445 E Market Street Louisville, KY 40202

OFFICE FOR LEASE



EXCLUSIVELY MARKETING BY:

WILL DUNCAN

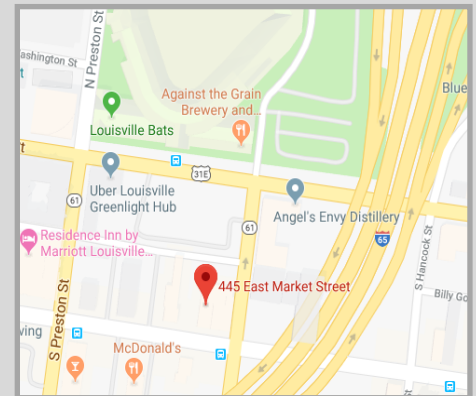
wduncan@duncancre.com

ANNE MARCHAL

amarchal@duncancre.com

OFFICE: (502) 292.5464

- Beautiful office building located in the popular NuLu District with 10 FREE parking spaces allotted to the 2nd floor
- 14,132 SF, Full Floor available with 10 offices, open work space, 3 conference rooms and a large kitchen/breakroom area
- Convenient access to I-64, I-65 and Watterson Expressway
- Surrounded by several area attractions such as Slugger Field, Angel's Envy Distillery, Waterfront Park and KFC Yum! Center
- Riverside Parking lot, directly behind the building, provides additional parking up to 219 spaces
- \$21.00/ SF, plus utilities



150 Thierman Lane
Louisville, KY 40207

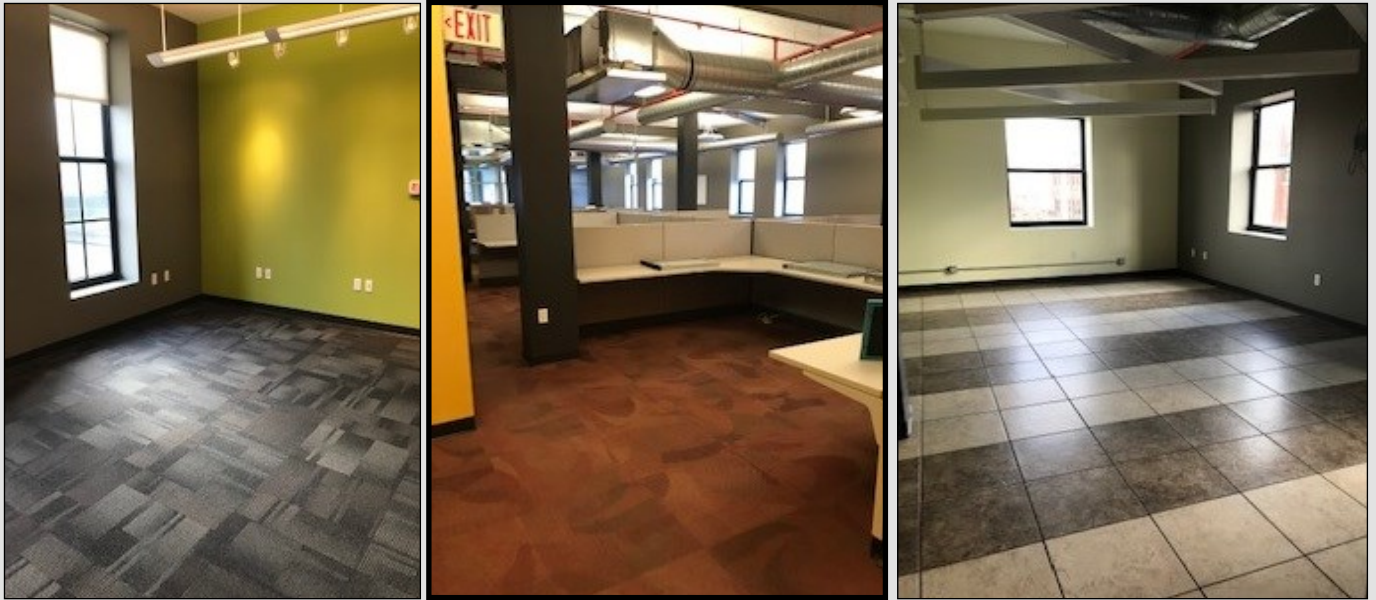
Visit our website to see other properties

www.duncancre.com

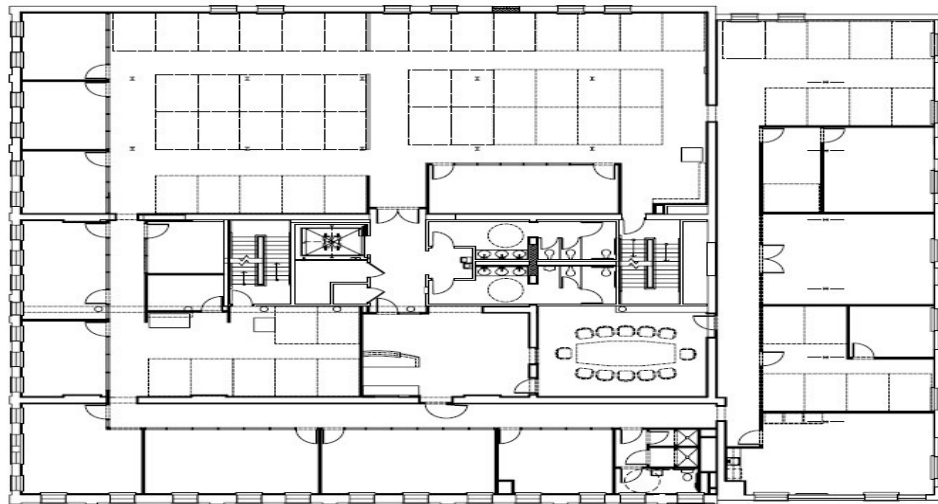
Class A Office Building

445 E Market Street Louisville, KY 40202

OFFICE FOR LEASE



SECOND FLOOR PLAN



PROJECT NO. 06-41-0	DATE A1.2	DATE MARCH 2007	OWNER COBALT VENTURES LLC LOUISVILLE, KENTUCKY	PROJECT COBALT MARKETPLACE EAST MARKET STREET & JACKSON STREET LOUISVILLE, KENTUCKY	SCALE	ARCHITECT STUDIO A ARCHITECTURE
------------------------	--------------	--------------------	---	---	-------	---



150 Thierman Lane
Louisville, KY 40207

Visit our website to see other properties

www.duncancre.com

This information has been obtained from reliable sources. Broker has no reason to doubt its accuracy but it may contain errors or omissions. Broker makes no representation, warranties or guarantees with respect to this information and Buyer should all of it.