

FOR SALE

Submarket: Northeast Columbia

±5.59 Acre Development Tract

911 LONGTOWN ROAD | COLUMBIA, SOUTH CAROLINA 29229



±5.59 acres for sale in northeast Columbia with 428' of frontage on Longtown Road and access off Accolades Drive

DETAILS

Across from Sandlapper Elementary School with ±651 students enrolled

Parcel can be subdivided to accommodate multiple users/sites

Water and sewer available at the parcel

Common stormwater detention in place

ZONING: PDD, Richland County

RICHLAND COUNTY TMS: R17500-03-47

PRICE: \$299,000

FOR MORE INFO, CONTACT

NICK STOMSKI | Partner | nstomski@trinity-partners.com | 803.567.1447

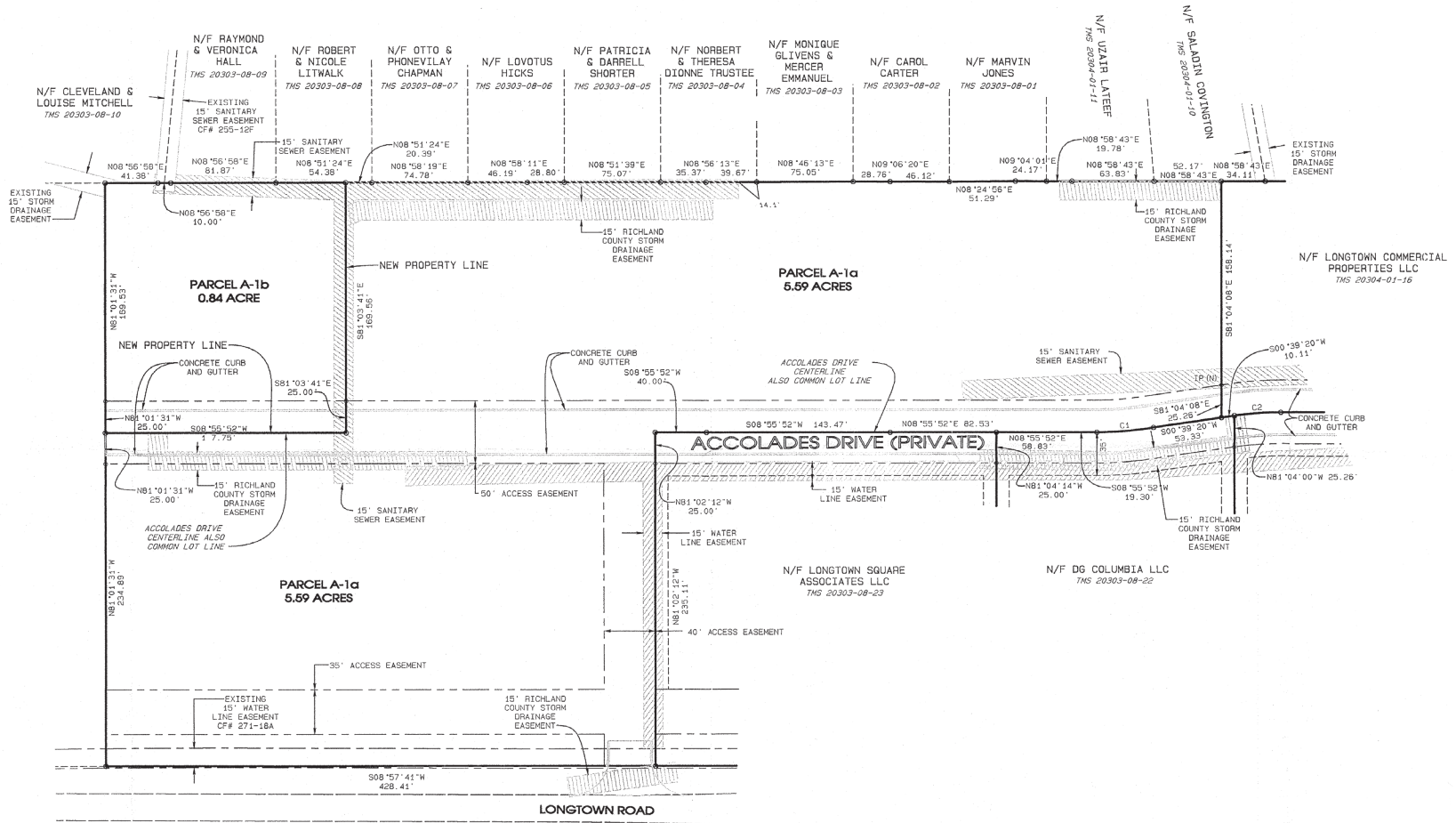
JAKE NIDIFFER | Brokerage Associate | jnidiffer@trinity-partners.com | 803.567.1324

**TRINITY
PARTNERS**

FOR SALE
Submarket: Northeast Columbia

Site Plan

911 LONGTOWN ROAD | COLUMBIA, SOUTH CAROLINA 29229



FOR MORE INFO, CONTACT

NICK STOMSKI | Partner | nstomski@trinity-partners.com | 803.567.1447

JAKE NIDIFFER | Brokerage Associate | jnidiffer@trinity-partners.com | 803.567.1324



FOR SALE

Submarket: Northeast Columbia

Overlay 911 LONGTOWN ROAD | COLUMBIA, SOUTH CAROLINA 29229



FOR MORE INFO, CONTACT

NICK STOMSKI | Partner | nstomski@trinity-partners.com | 803.567.1447

JAKE NIDIFFER | Brokerage Associate | jnidiffer@trinity-partners.com | 803.567.1324



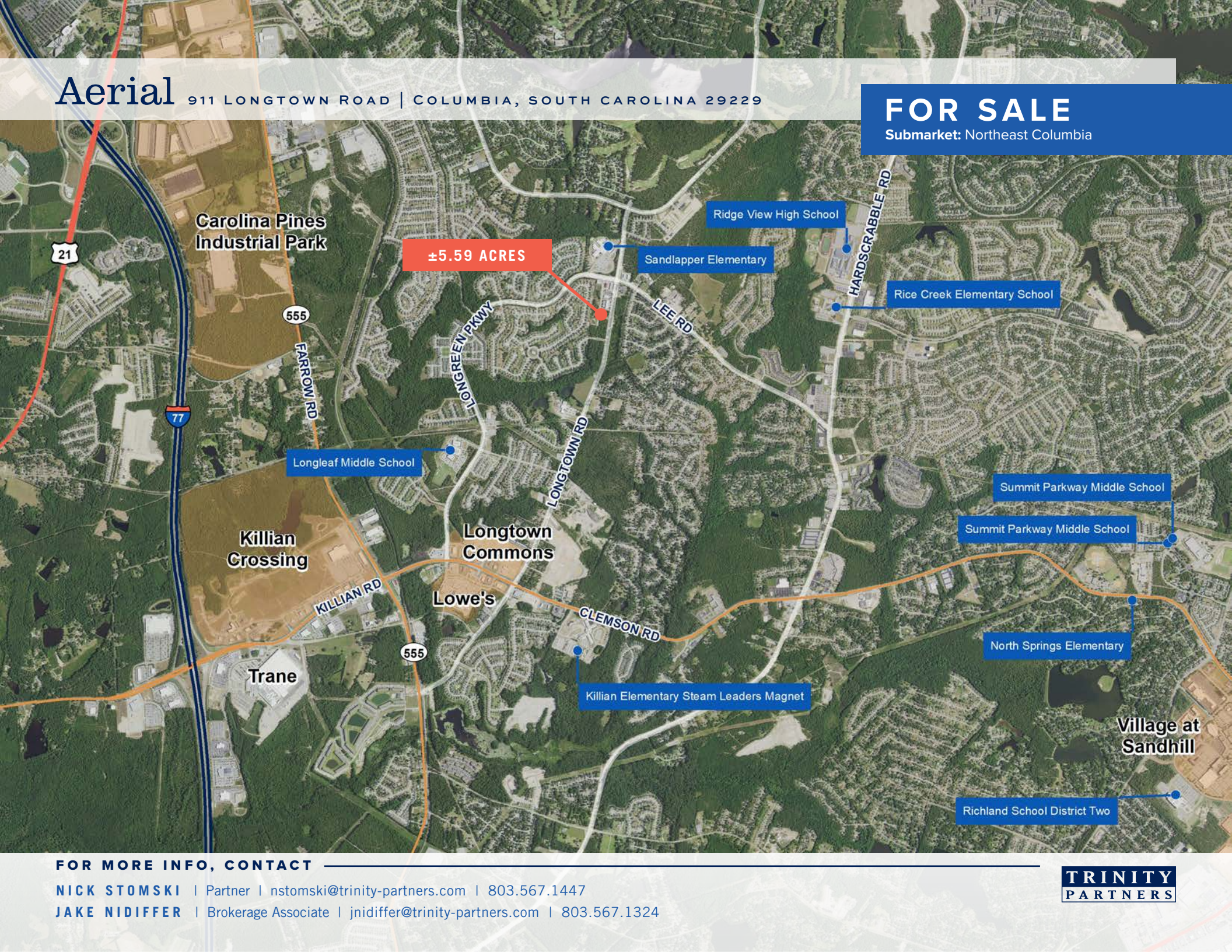
Aerial

911 LONGTOWN ROAD | COLUMBIA, SOUTH CAROLINA 29229

FOR SALE

Submarket: Northeast Columbia

±5.59 ACRES



FOR MORE INFO, CONTACT

NICK STOMSKI | Partner | nstomski@trinity-partners.com | 803.567.1447

JAKE NIDIFFER | Brokerage Associate | jnidiffer@trinity-partners.com | 803.567.1324



FOR SALE

Submarket: Northeast Columbia

Demographics

911 LONGTOWN ROAD | COLUMBIA, SOUTH CAROLINA 29229

	ONE MILE RADIUS			THREE MILE RADIUS			FIVE MILE RADIUS		
SUMMARY (2010 CENSUS)	2010	2020	2025	2010	2020	2025	2010	2020	2025
Population	9,063	9,613	10,069	81,399	84,866	88,480	168,879	179,840	187,931
Households	4,543	4,778	5,015	32,021	33,551	35,228	65,314	70,101	73,704
Families	2,240	2,267	2,351	15,932	16,030	16,597	33,109	33,884	35,043
Average Household Size	1.97	1.99	2,351	2.14	2.16	2.16	2.22	2.24	2.24
Owner Occupied Housing Units	3,131	3,009	3,077	16,959	15,984	16,417	31,647	30,208	31,102
Renter Occupied Housing Units	1,412	1,768	1,938	15,062	17,567	18,811	33,667	39,893	42,602
Median Age	42.6	44.0	44.5	31.0	33.1	34.0	29.3	30.9	31.5
INCOME	2010	2020	2025	2010	2020	2025	2010	2020	2025
Median Household Income		\$60,182	\$63,127		\$45,409	\$48,501		\$42,284	\$44,962
Average Household Income		\$97,639	\$104,723		\$75,898	\$82,839		\$66,841	\$72,630
TRENDS	AREA	STATE	NATIONAL	AREA	STATE	NATIONAL	AREA	STATE	NATIONAL
2020 - 2025 ANNUAL GROWTH RATES									
Population	0.93%	1.28%	0.72%	0.84%	1.28%	0.72%	0.88%	1.28%	0.72%
Households	0.97%	1.30%	0.72%	0.98%	1.30%	0.72%	1.01%	1.30%	0.72%
Families	0.73%	1.19%	0.64%	0.70%	1.19%	0.64%	0.67%	1.19%	0.64%
Owner Occupied Households	0.45%	1.26%	0.72%	0.54%	1.26%	0.72%	0.59%	1.26%	0.72%
Median Household Income	0.96%	1.28%	1.60%	1.33%	1.28%	1.60%	1.24%	1.28%	1.60%

FOR MORE INFO, CONTACT

NICK STOMSKI | Partner | nstomski@trinity-partners.com | 803.567.1447

JAKE NIDIFFER | Brokerage Associate | jnidiffer@trinity-partners.com | 803.567.1324

