



TRINITY  
PARTNERS

# 205

## W MARTIN STREET

— RALEIGH, NC 27603 —

**FREESTANDING BUILDING IN DOWNTOWN RALEIGH'S NASH SQUARE DISTRICT - EXCELLENT VISIBILITY AND PARKING**

## FOR LEASE

### PROPERTY HIGHLIGHTS

- » 4,600 SF freestanding, single-story office building
- » Layout includes 9 private offices with skylights, conference room, break area, and reception
- » 7 parking spaces included with rent; supplemental parking available for additional cost
- » Located in downtown Raleigh's Nash Square district, across from the Wake County courthouse
- » Ideal for a law firm or other professional office user
- » Seeking 5-10 year lease term



**RENTAL RATE** \$29.00 PSF, NNN

### CONTACT:

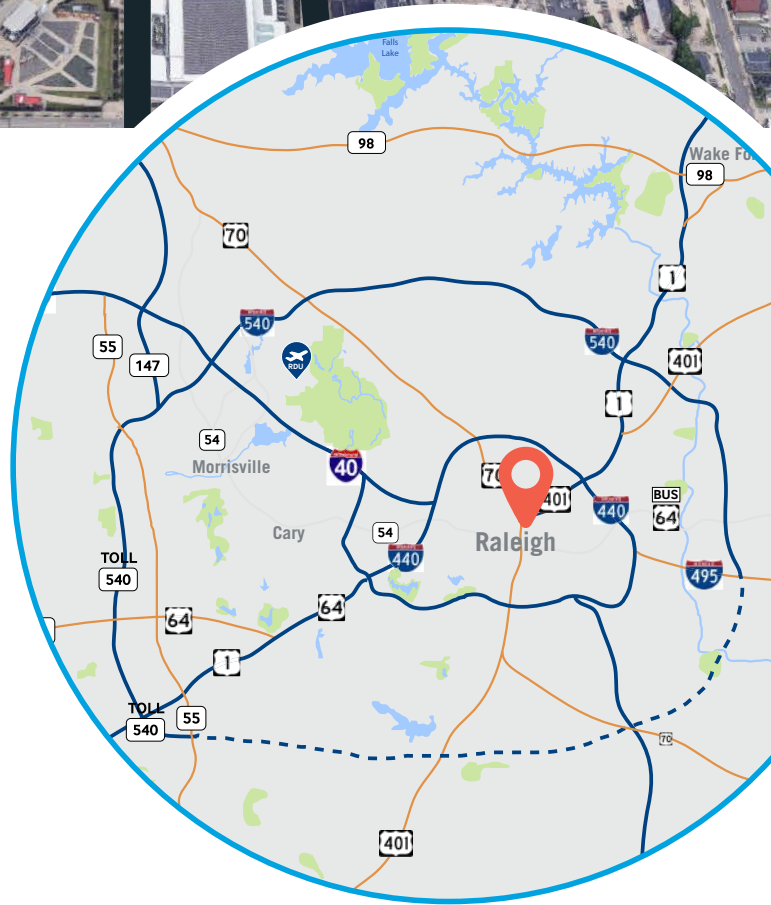
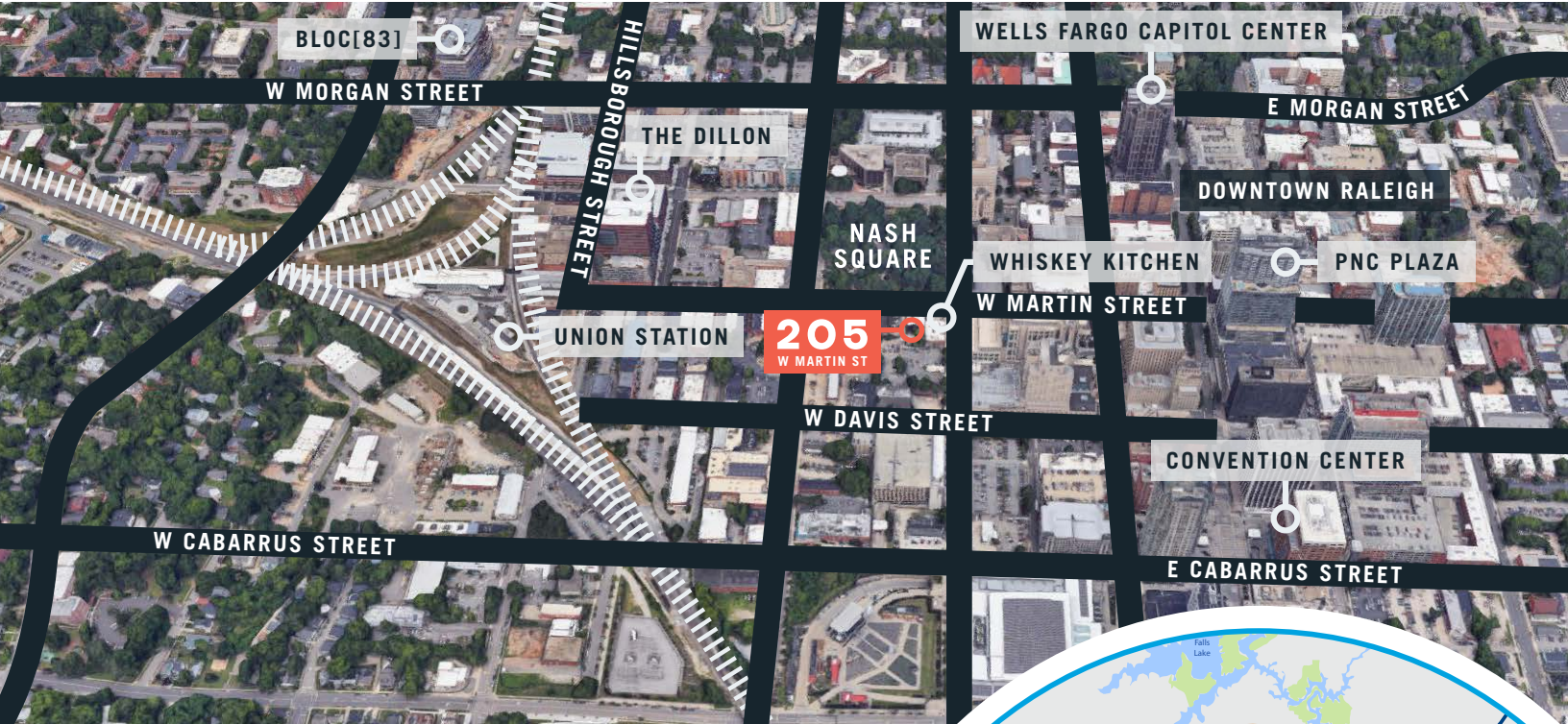
Boss Poe | 919.868.0016 | bpoe@trinity-partners.com

# 205

# W MARTIN STREET

— RALEIGH, NC 27603 —

**OFFICE  
FOR LEASE**



## CONTACT:

Boss Poe | 919.868.0016 | bpoe@trinity-partners.com

**TRINITY  
PARTNERS**  
trinity-partners.com

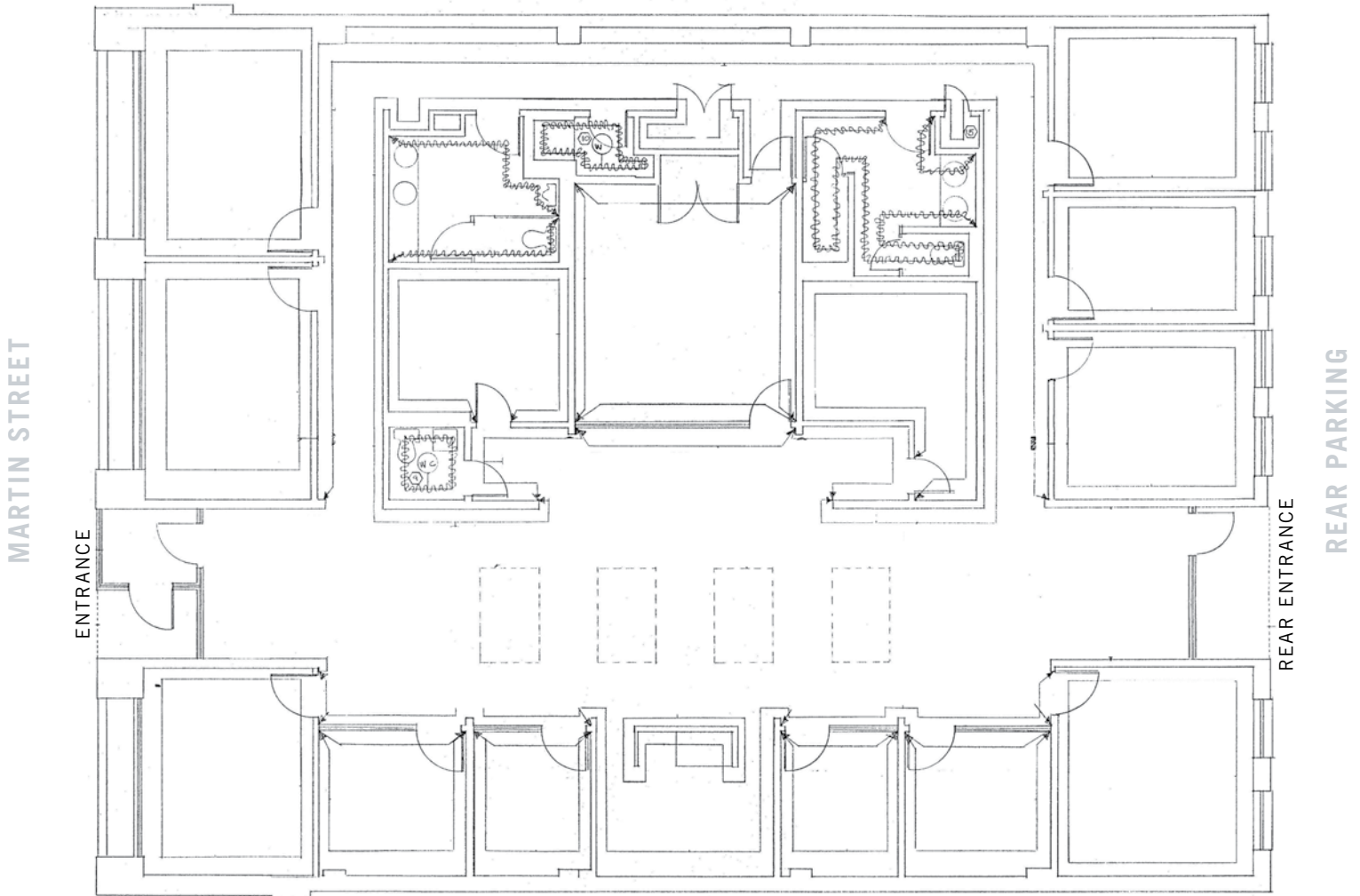
# 205

# W MARTIN STREET

— RALEIGH, NC 27603 —

**OFFICE  
FOR LEASE**

**4,600 SF**



The information contained herein was obtained from sources believed reliable; however, Trinity Partners makes no guarantees, warranties, or representations as to the completeness or accuracy thereof. The presentation of this property is submitted subject to errors, omissions, changes of price or conditions prior to sale or lease, or withdrawal without notice.

**CONTACT:** \_\_\_\_\_

Boss Poe | 919.868.0016 | [bpoe@trinity-partners.com](mailto:bpoe@trinity-partners.com)

**TRINITY  
PARTNERS**  
[trinity-partners.com](http://trinity-partners.com)