



MEADOW BROOK 2700 | OFFICE SUBLEASE

2700 Corporate Drive | Hoover, AL | 35242 **CALL FOR PRICING**

MASTER LEASE

Expires June 30th 2025

AVAILABLE SPACE

Ground floor: 4,220 SF
2nd floor: 3,987 SF

DETAILS

- Building is 100% Leased
- Free surface parking (6/1,000 SF ratio)
- Excellent access to major transportation arteries
- Class-A suburban office park
- Herman Miller cubicles included



SUBLEASE EXCLUSIVELY OFFERED BY

JERRY GRANT, CCIM

jerryg@grahamcompany.com

205•871•7100 | GrahamCompany.com

Information deemed reliable but not guaranteed



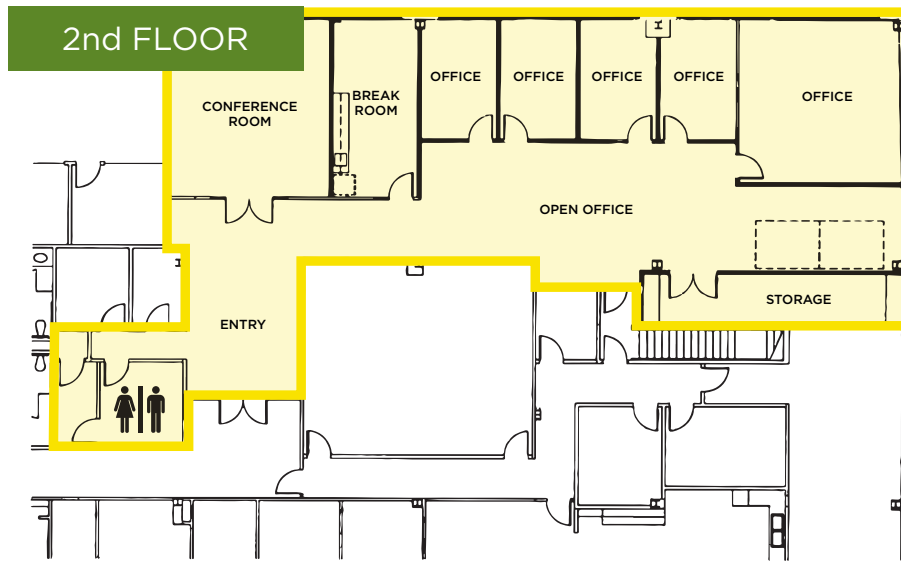
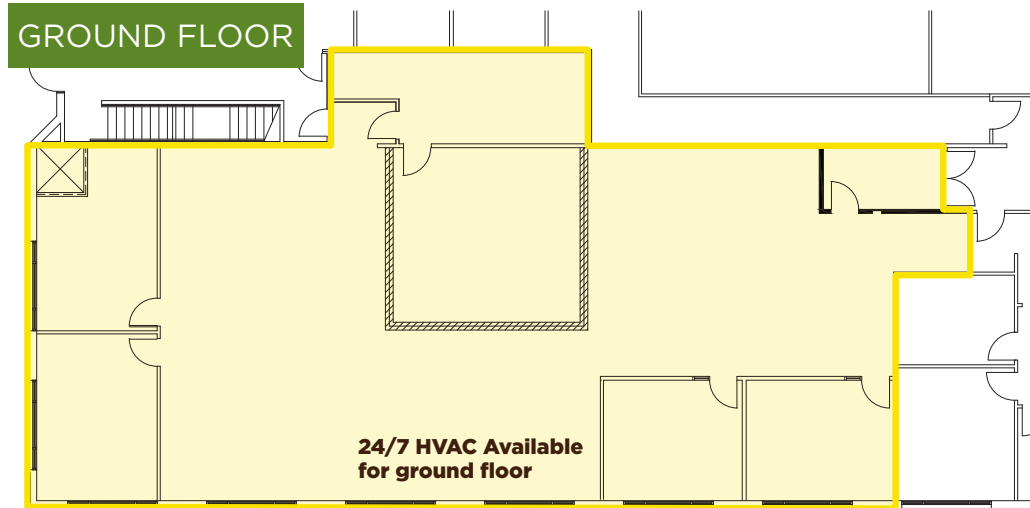
Graham & Co

integrated



MEADOW BROOK 2700 | OFFICE SUBLEASE

2700 Corporate Drive | Hoover, AL | 35242 **CALL FOR PRICING**



Floor plans not to scale.

SUBLEASE EXCLUSIVELY OFFERED BY

JERRY GRANT, CCIM

jerryg@grahamcompany.com

205•871•7100 | GrahamCompany.com

Information deemed reliable but not guaranteed



Graham & Co