

**FOR SALE**

County: Greenwood

# ±52 Acre Commercial Tract

BYPASS 25 SE AT CAMBRIDGE AVENUE | GREENWOOD, SOUTH CAROLINA



Prime land in Greenwood County located just south of the Cambridge Avenue East and Bypass 25 Southeast intersection

## DETAILS

Investment opportunity

Great access on the Bypass and E. Cambridge Avenue

Tract has acreage on both sides of the bypass in a growing opportunity zone

TMS: 6856-629-032

FOR MORE INFO, CONTACT

CURT GWINN | Brokerage Associate | cgwinn@trinity-partners.com | 803.567.1795

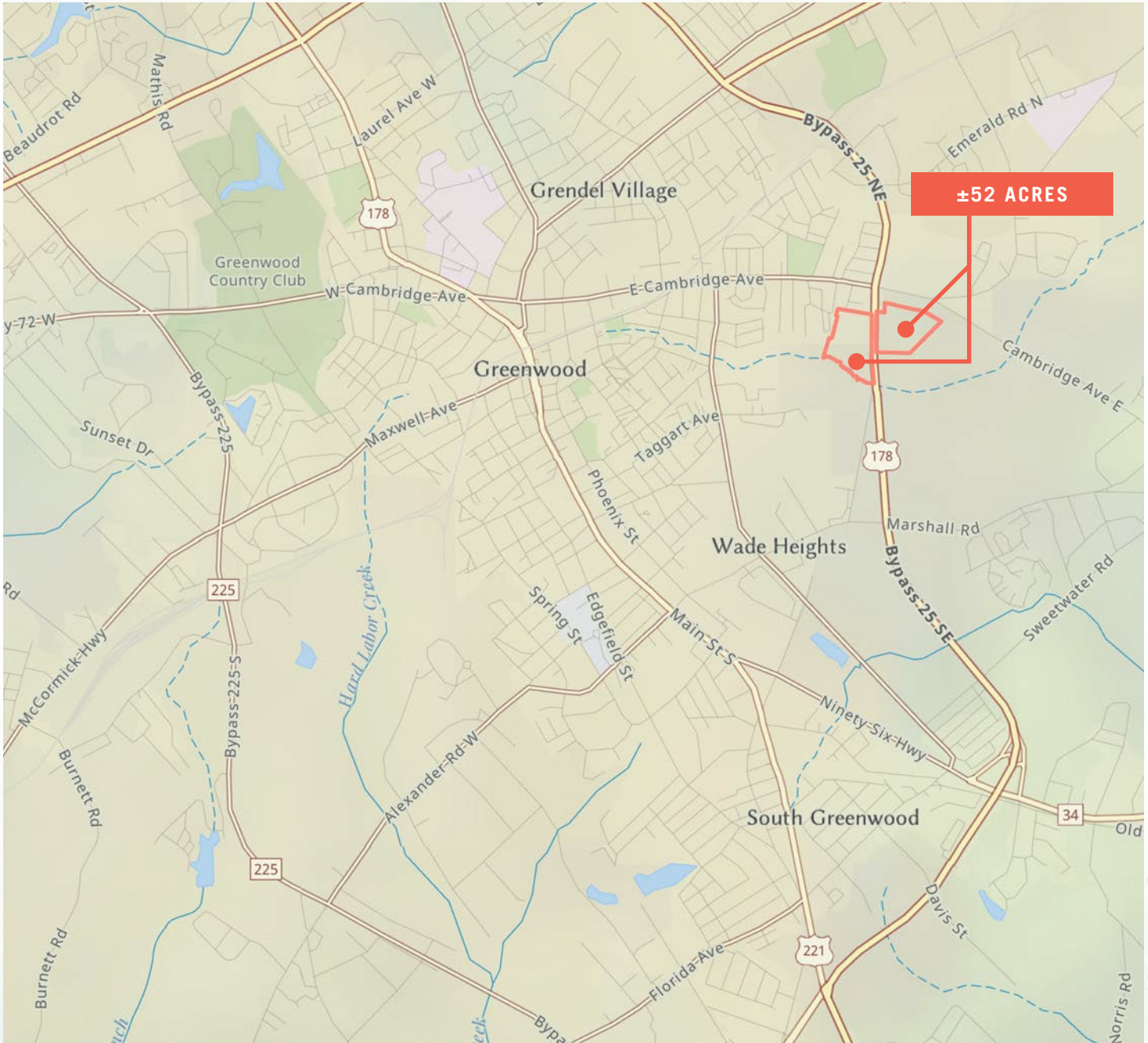
**TRINITY  
PARTNERS**

**FOR SALE**

County: Greenwood

# Location

BYPASS 25 SE AT CAMBRIDGE AVENUE | GREENWOOD, SC



**FOR MORE INFO, CONTACT**

**CURT GWINN** | Brokerage Associate | [cgwin@trinity-partners.com](mailto:cgwin@trinity-partners.com) | 803.567.1795

**TRINITY  
PARTNERS**

**FOR SALE**

County: Greenwood

# Aerial

BYPASS 25 SE AT CAMBRIDGE AVENUE | GREENWOOD, SC



FOR MORE INFO, CONTACT

CURT GWINN | Brokerage Associate | [cgwinn@trinity-partners.com](mailto:cgwinn@trinity-partners.com) | 803.567.1795

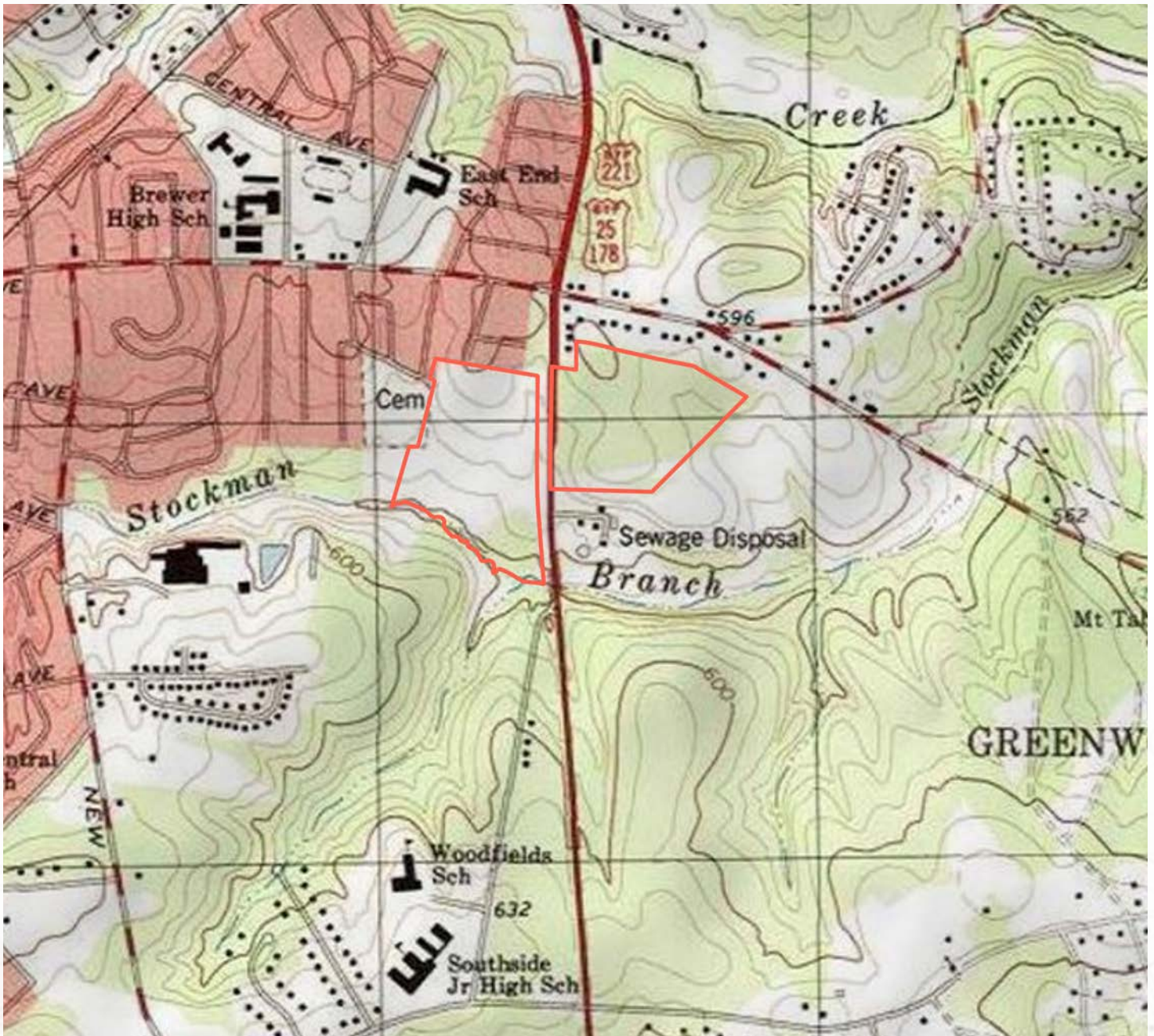
**TRINITY  
PARTNERS**

**FOR SALE**

County: Greenwood

# Topo

BYPASS 25 SE AT CAMBRIDGE AVENUE | GREENWOOD, SC



FOR MORE INFO, CONTACT

CURT GWINN | Brokerage Associate | [cgwinn@trinity-partners.com](mailto:cgwinn@trinity-partners.com) | 803.567.1795

**TRINITY**  
**PARTNERS**